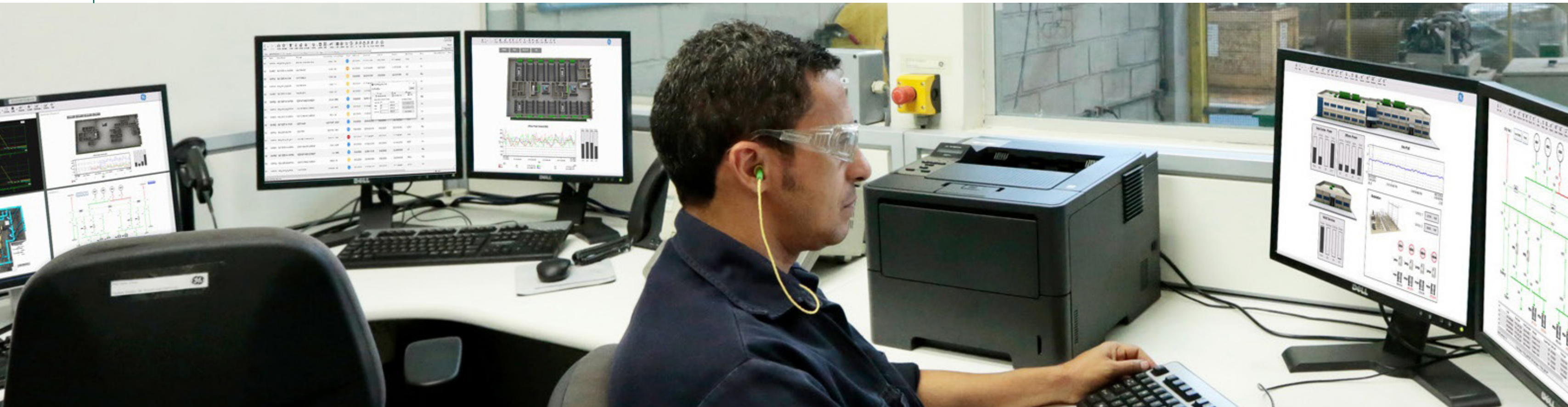




GE VERNOVA

HMI/SCADA WITH IPOW



ELECTRIC UTILITY SCADA MADE EASY

Developed for electric utilities, including rural cooperatives, municipal authorities, and independent distribution utilities, HMI/SCADA with iPower from GE Vernova helps improve utilities operations and protect life and property.

"iPower offers full-featured, safe, reliable, and affordable SCADA suitable for distribution cooperatives of any size."

—Randy Poulson, VP Engineering Services, Dakota Electric Association

To help electric utilities of all sizes quickly and easily install and configure SCADA capabilities, GE Vernova offers both HMI/SCADA solutions, iFIX and CIMPLICITY, with iPower—a powerful software solution designed for electricity control room operations. iPower provides real-time data collection, database management, dynamic data display, and secure operator supervisory control. As a result, you can achieve safer operations and efficient network management.

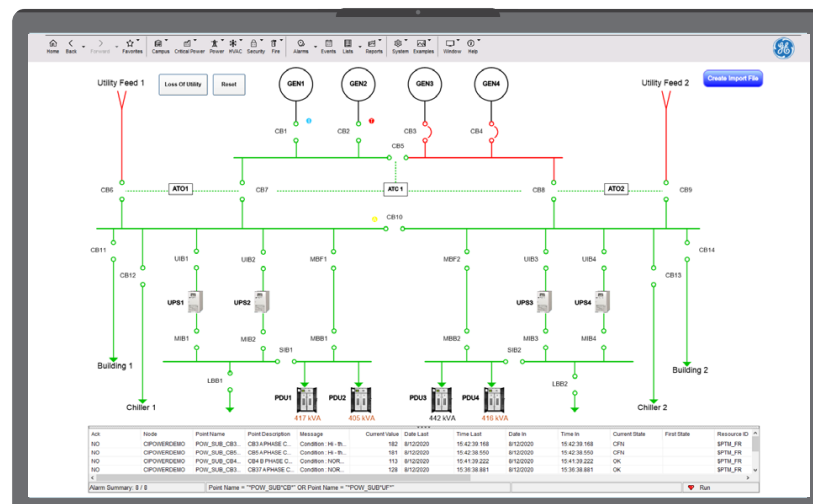
iPower is an open, standards-based SCADA solution that's easy to use and easy to own. It is also scalable from substation automation systems to complex computer networks in larger utility control rooms. With its intuitive operations and simplified maintenance, GE Vernova's HMI/SCADA with iPower enables you to focus on core operational tasks for a sustainable advantage.

Key benefits:

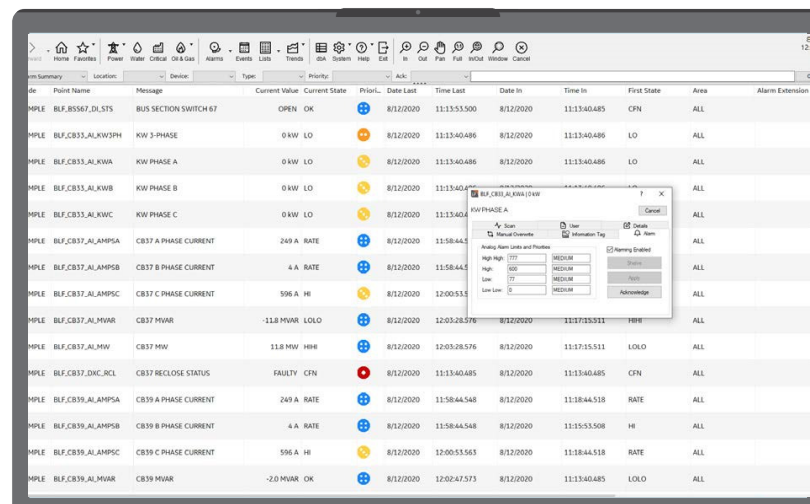
- Safer and secure-by-design electrical operations
- Easy to learn and easy to use
- Enhanced operator decision making
- Increased productivity and accountability
- Lower total cost of ownership
- Greater operator acceptance
- Reduced deployment, configuration and training time
- Improved operations efficiency

Key features:

- Control tagging, interlocks, lockout and timeout
- Authorized changes (electronic signatures)
- Operator alarm management suite: alarm shelving, enable/disable alarms, threshold changes, and off normal display
- Real-time data communication and dynamic data display
- Enhanced lists for reporting
- Operator notes for auditing / context
- Intuitive and consistent navigation i.e. main menu, tab displays, right-click menu, and control dialogue boxes
- Object-oriented display and picture resizing
- Screen arrangement for managing multiple pictures
- Structured database and templates for deployment



iPower provides real-time data display, one-line screens, and centralized management for all your IEDs.



iPower alarm management is fast and efficient, providing clear prioritization.

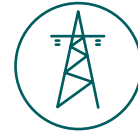
FOUR TYPES OF APPLICATIONS FOR IPOW

CUSTOMER SOLUTIONS



Substation automation/ substation management

Acts as a substation gateway or onsite substation management interface.



Electric utility control room SCADA

HMI/SCADA solution for electricity utilities. Full supervisory control and data acquisition over electrical smart devices and equipment.



Energy management for large energy users

Power monitoring and distribution control for heavy power utilization environments.



Operations and management of critical energy delivery

Power monitoring, backup power automation, and critical power delivery management for power dependent/high availability environments.

iPower is a proven, reliable HMI/SCADA, deployed across a wide range of industries in more than 40 countries

Solutions for industry

iPower is designed to suit a wide range of HMI/SCADA applications for a variety of industries:

- **Substation automation:**
Electricity, industrial, and transport
- **Electricity distribution management:**
Industrial, manufacturing, and transport
- **Utility control room SCADA:**
Electricity, water & wastewater, and oil & gas
- **Traction control system:**
Rail, and transportation
- **Building management:**
Commercial, education, healthcare, and datacenters
- **Critical power management:**
Industrial, manufacturing, hospitals, datacenters, and air & sea ports
- **Process automation:**
Manufacturing, oil & gas, mining, water & wastewater, food & beverage, and timber processing

iPOWER—EASY TO USE AND DEPLOY

Developed with control room operations in mind, iPower offers a familiar and intuitive Windows environment, combined with consistent and clear interfaces. It's the operator's choice for easy, safer, and secure-by-design operations in all conditions.



iPower provides a flexible and highly configurable interface. Operators can display and arrange multiple screens on one or multiple monitors to maximise screen real-estate, monitor multiple systems, and quickly switch between different tasks.

Easy to navigate

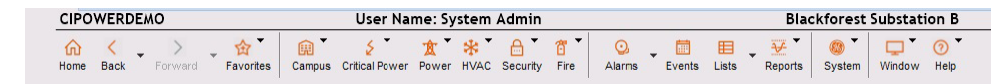
iPower includes a selection of pre-configured menus for intuitive navigation. For example the main menu, tab displays, control dialog boxes and the right-click menu enable operators to easily navigate their iFIX or CIMPLICITY system. This provides a consistent user experience, where actions and responses can be done with greater speed and accuracy, improving output and performance and enabling operators to take control of their operations in a secure and effective manner. Electric utility operators can quickly access the alarm summary, improving their response to critical alarms or easily access displays i.e. per substation, based on organized logical grouping.

Easy to configure

Developed with a range of tools that help make installation and configuration easier and quicker than other solutions, iPower is designed specifically for electric utilities to save you valuable staff time and resources.

Quick to implement

Sophisticated tools automate iPower configuration, making it easy for you to implement accurate and consistent SCADA without the need for IT specialists. iPower automates the production of clean and concise operator displays. Drop a device into a picture, and iPower automatically adds a tabular display of all related secondary points—with the perfect operator dialogs for safe, consistent control. Configuration work that took hours now takes seconds.



iPower provides an intuitive and familiar navigation menu that can be customized for layout, quick access buttons, and immediately familiar navigation options.

Simple to maintain

Perform maintenance and troubleshooting with tools that are immediately intuitive to Microsoft Windows users. Drag and drop new devices to quickly update your one-line diagrams. iPower maintenance is easy for the smallest utilities using in-house resources, keeping maintenance costs to a minimum.

Flexible to customize

Great software design makes iPower an extremely flexible and adaptable SCADA system. Microsoft VBA is embedded throughout, empowering customization to meet user-specific requirements, while retaining all the benefits of shrink-wrapped software. The prevalence of VBA expertise makes customization both easy and affordable.



Equipment controls in iPower are provided via universal control and information containers for each device called Tab Displays. These provide convenient access to all data, controls, and user material for each device.

GE VERNOVA'S HMI/SCADA WITH IPOWERS—EASY TO OWN



At every step, iPower reduces the cost of SCADA ownership—including purchase, installation, training, maintenance, support, updates, and product longevity. All this, plus a focus on electric utility operations, makes iPower the perfect choice for rural cooperatives and municipal authorities.

Simple to install

iPower offers user-friendly tools and an intuitive design, eliminating the steep learning curve for engineers—saving significant time and effort. Designed for installation by the utility, iPower removes the need for lengthy, costly implementation and training.

Intuitive environment

iPower provides an environment that is familiar, efficient, and safe, so it's easy to introduce in any control room. Leveraging the latest technology and industry best practices, iPower is a proven solution for utility operations around the world.

Built on GE Vernova's flexible software architecture

- Client server architecture
- Multiple servers and redundant servers with automatic failover options
- View only, operate, and/or configure client options; dedicated clients and/or concurrent licensing client options
- Local LAN, WAN, and remote/portable client options
- Web-based client options
- Duplicated networking with automatic network failover

Substation automation SCADA

iPower can be installed as a stand-alone SCADA system—a single computer providing all SCADA functions:

- Server functions such as real-time communications with RTUs and IEDs, database management, alarm and event management, and history recording
- Client functions such as operator and/or engineering HMI, including monitoring, control, and configuration

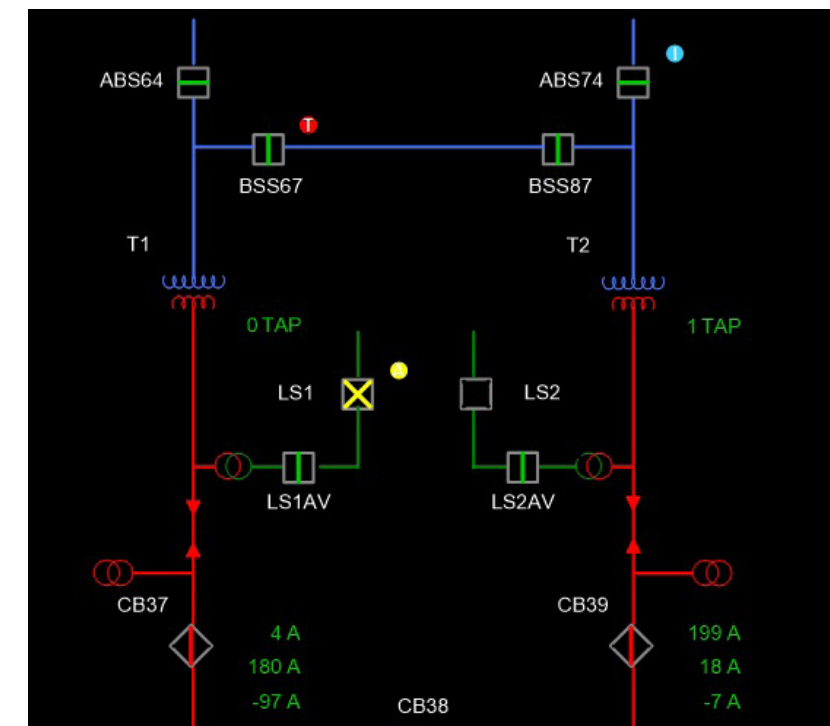
Control room SCADA

iPower can also be installed as a multi-computer SCADA system—providing various services that are distributed among multiple computers in a client server architecture.

Open and connected

Leveraging your existing investments today as well as the new devices you may choose tomorrow, our SCADA solutions are built on an open and layered architecture. With hundreds of drivers off-the-shelf, and full OPC client and server support, iPower is a truly open, vendor-independent solution that's flexible and interoperable—translating into real value.

iPower addresses the need for a scalable, flexible, and extensible SCADA—from the smallest substation automation system to the largest multi-computer system—providing control room, corporate, and remote SCADA services.



High visibility Attributes provide clear indicators of equipment with special conditions

iPOWER SPECIFICATIONS

All the functionality you need for safer, more efficient utility operations

Features overview

- Real-time data communication, database management, real-time dynamic data display
- Secure operator supervisory control
- Alarm, event, sequence of events, momentary change detection
- Historical collection with real-time and historical graphing
- Standard SCADA Historian or full Enterprise-wide Historian options
- User-based security
- Online configuration

Safety features

- Select before operate control
- Control timeout; control fail alarm
- Simultaneous control lockout
- Control tagging (control lockout)
- Information tagging

Standards and tools

- Microsoft VBA
- ActiveX
- OPC / OPC UA
- MQTT
- SQL
- ODBC
- COM

Connectivity

- Proven communications software for hundreds of brands of RTUs, IEDs, PLCs and other I/O devices
- Industry standard communications protocols available, including DNP 3.0, IEC 870-5-101, 870-5-104, ICCP, and IEC 61850
- Full OPC server and client support
- Multiple simultaneous Ethernet connections
- PI and GE Vernova's Historian connectors
- ODBC and SQL tools
- MultiSpeak compliant

Display and graphics

- Multiple monitors per workstation
- Main menu navigation; including Back, Forward, Home, Favorites
- Object-oriented graphics
- Industry-specific object libraries
- Pan, zoom with automatic declutter
- Bus coloring and portable ground display
- Configurable multi-pen charts with left/right scroll, X-Y, and configurable look and feel

List and Reporting features

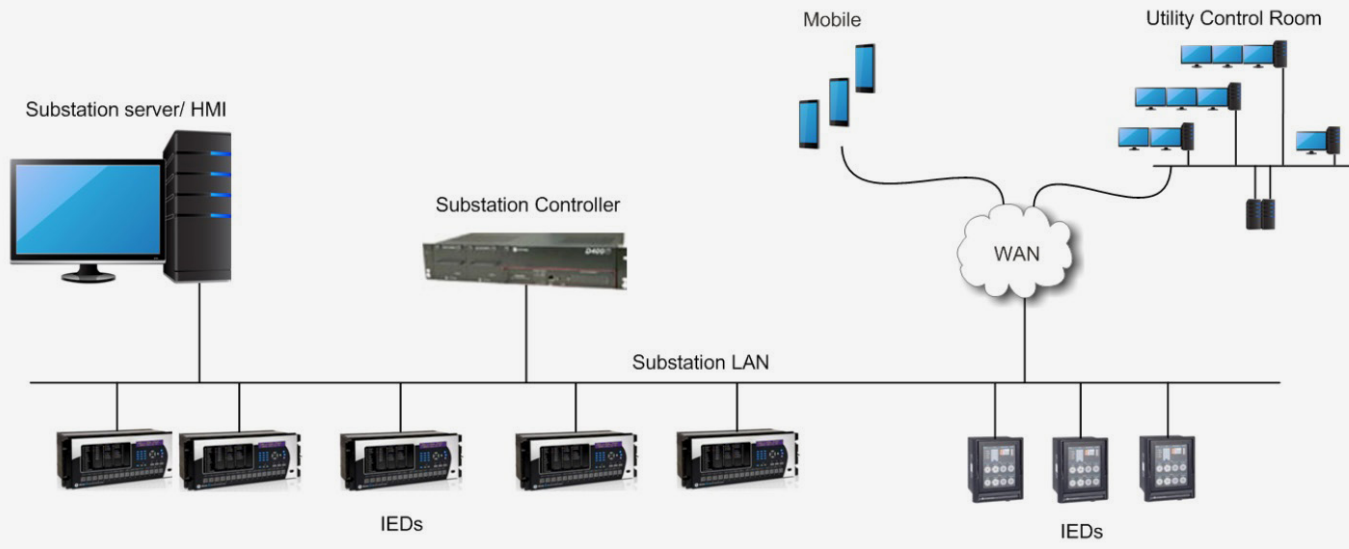
- Alarms
- Events
- Sequence of events
- Off-normal
- Dynamic database display
- Shelved alarms
- Control tag
- Information tag
- Manual overwrite
- Off-scan
- Disabled alarms
- Operator notes

Requirements

- GE Vernova's HMI/SCADA (iFIX or CIMPLICITY)
- See requirements for iFIX and CIMPLICITY HMI/SCADA

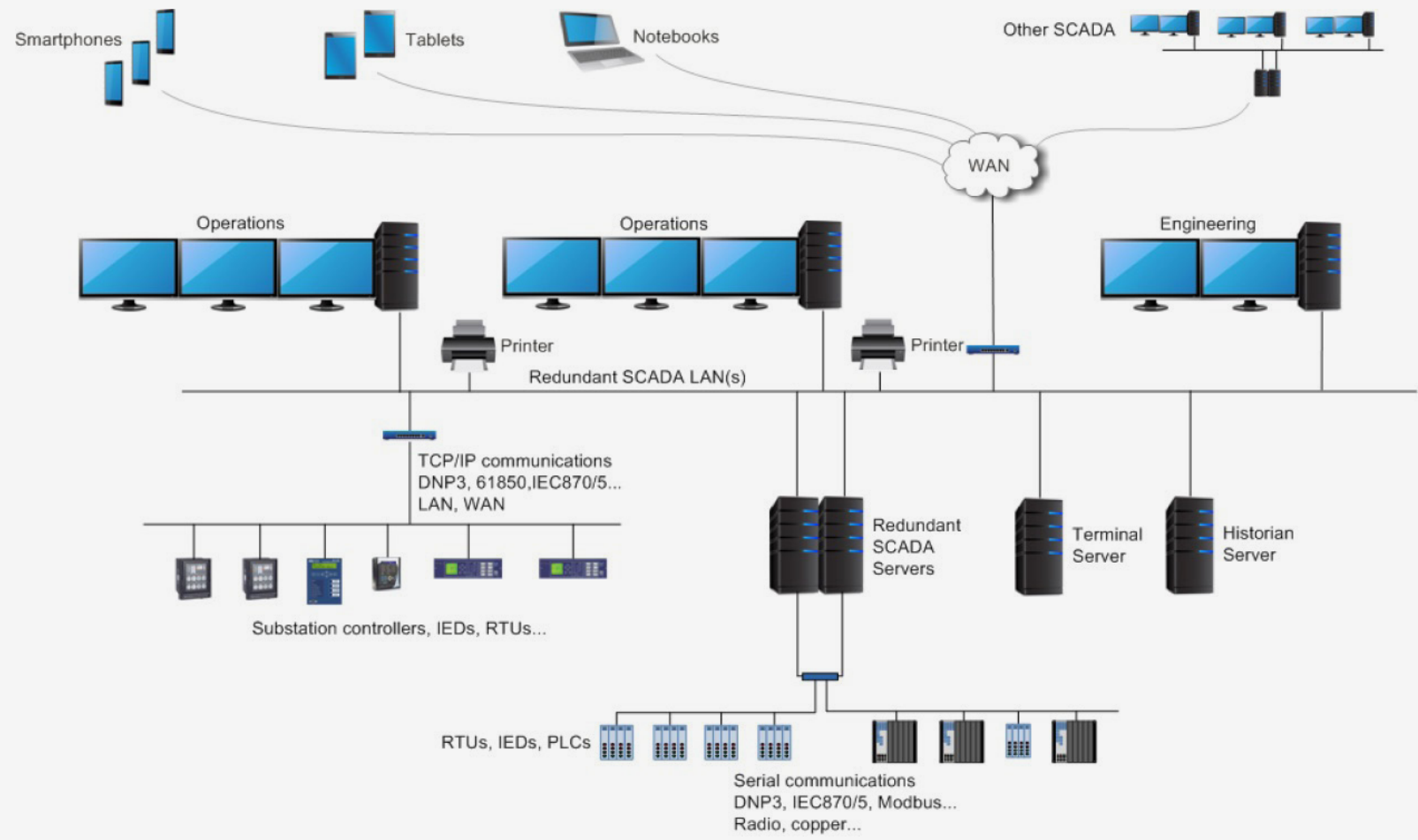
Architecture—Substation Automation

iPower can be deployed as a single computer, providing both server and client functions, for highly functional substation management and automation.



Architecture—Control Room SCADA

Extensible architecture means iPower can scale to multi-server deployments and achieve high availability with redundant systems and multiple operators.



Please consult online Getting Started Guide product documentation for hardware and software requirements. Confirm standard vs optional features with your GE Vernova sales representative. Specifications are subject to change without notice. Results and functionality vary, depending on existing hardware/software, applications, implementation, and other factors.

Learn how GE Vernova’s HMI/SCADA with iPower can help you meet your business goals.

[Learn More](#)



ABOUT GE VERNOVA'S PROFICY[®] SOFTWARE & SERVICES

GE Vernova's Proficy[®] Software & Services empowers teams, illuminating the path to a greener, more profitable future. Our proven industrial software accelerates innovation, enables connected workers, and operationalizes sustainability. We're driving measurable progress for over 20,000 diverse customers around the world.

The Proficy portfolio includes cloud-based and on-prem HMI/SCADA, MES, industrial data management, and analytics. Our software solves the toughest industrial challenges and is used in applications such as discrete, hybrid, and continuous manufacturing; utilities automation; metro transit; and much more. Proficy offers architecture flexibility including single machines, remote substations, and complex, distributed networks that span multiple factories and geographies.

[Explore Proficy Software & Services](#)

