

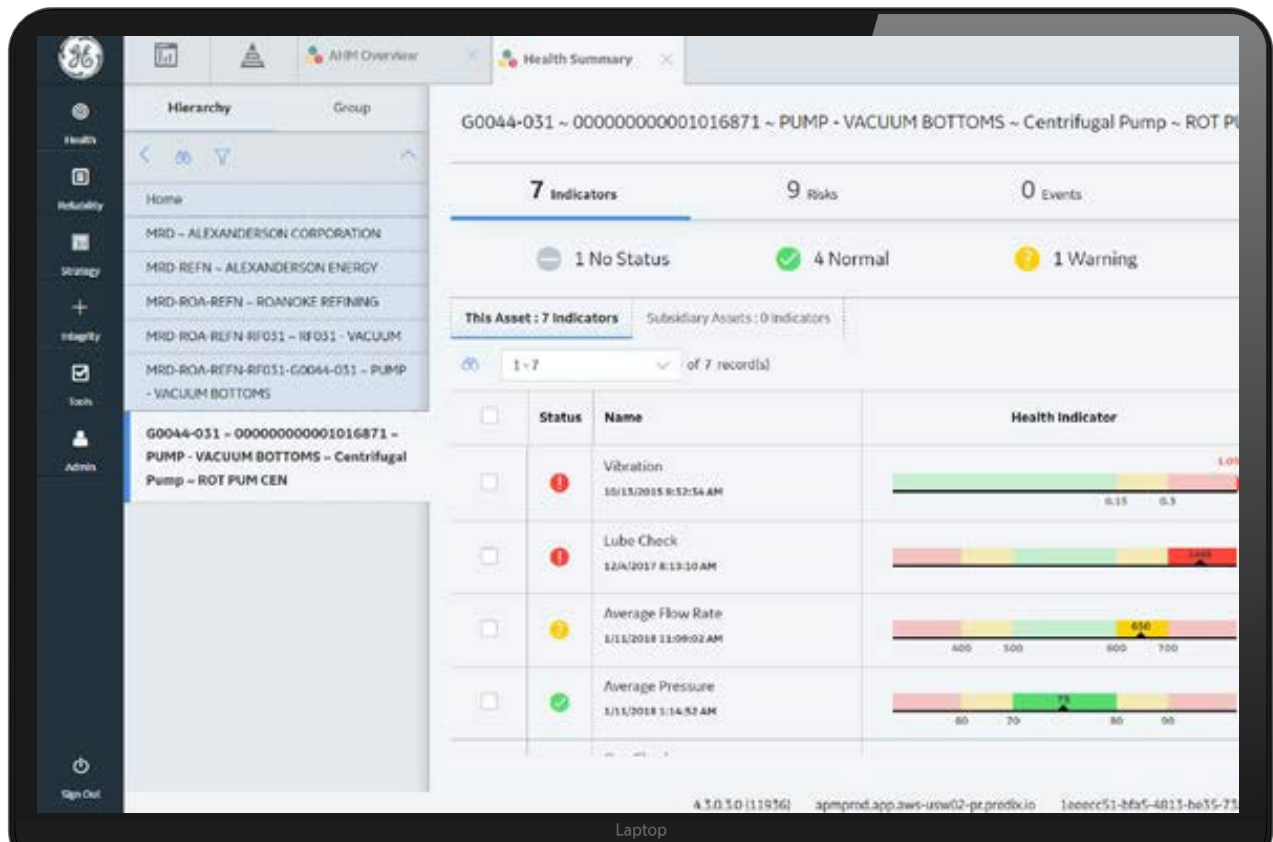
APM HEALTH



Break down data siloes and empower your workforce with a unified view of asset performance.



GE VERNOVA



APM HEALTH

APM Health is an application within our flexible Asset Performance Management offering. This condition monitoring solution manages data across a variety of assets and systems and creates a unified view of what matters the most to your organization. As a standalone application, or part of an enterprise-ready APM platform, APM Health contextualizes data from not only your assets themselves – but your other critical systems of record. By integrating with a myriad of sources, APM Health solves even the most complex data disparity and latency concerns and gives a real-time view of health and condition status.

APM Health also provides the ability to leverage predictive analytics to gain early warnings into potential failures, performance deviations, and pair perfectly with GE Vernova’s leading APM Reliability solution to give organizations an even more robust foundation to its Predictive Maintenance programs. APM Health is also available in the cloud, on-premises, or other deployment types to help ensure the data that is required to make critical decisions is leveraged in real-time.

Gain a real-time view of asset health, condition status and alerts – anytime, anywhere (edge, cloud, hybrid). APM Health enables industrial organizations to accelerate time-to-value, automate data integration, and activate data analytics.

APM HEALTH PROVIDES:

- Operational flexibility
- Performance optimization
- Mobile empowerment
- Contextualized data

Discover more

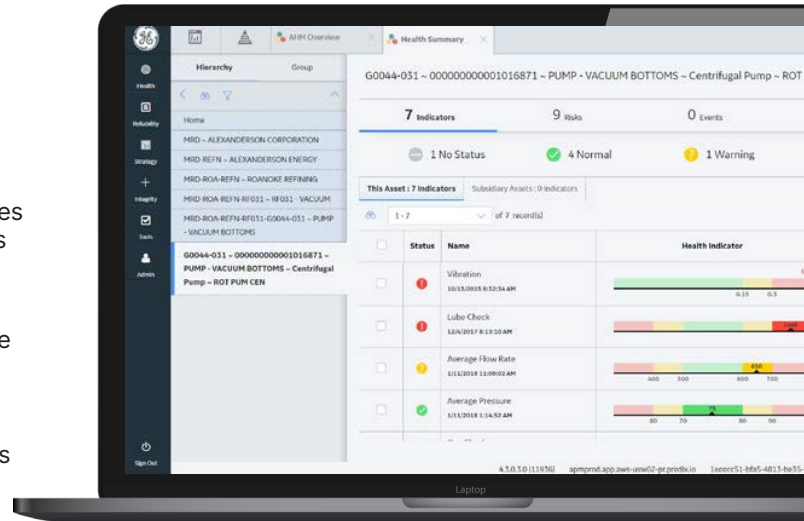


FEATURES:

Asset Health Manager

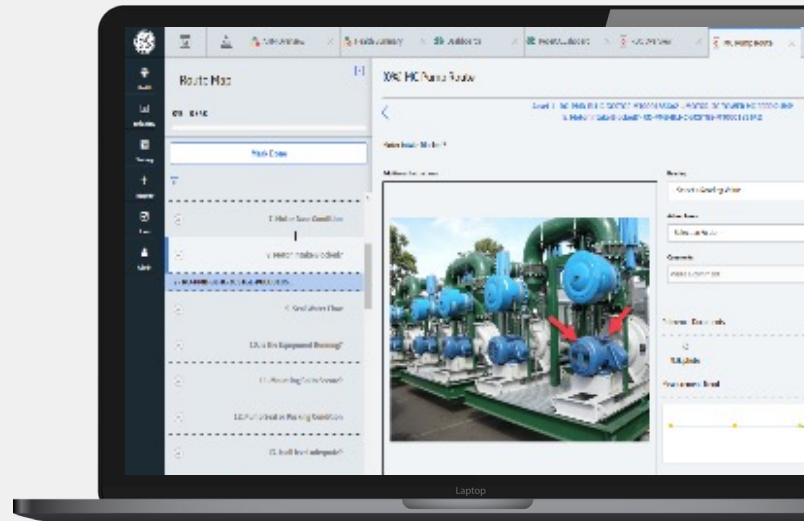
Health manager puts asset conditions in context with known asset risks, alerting users to emerging operating situations and empowering them to prioritize alerts and respond proactively to avoid disruptive unplanned maintenance. Health manager provides the ability to define and manage asset conditions. This also gives visibility into asset conditions by leveraging existing sources of data in your organization.

The focus is to monitor data that is relevant to asset performance analysis and condition assessment through health indicators, which are defined with high and low criteria for warning and alarm conditions. These health indicators are prioritized in the hierarchical display so that the most critical alerts are given focus for appropriate response.



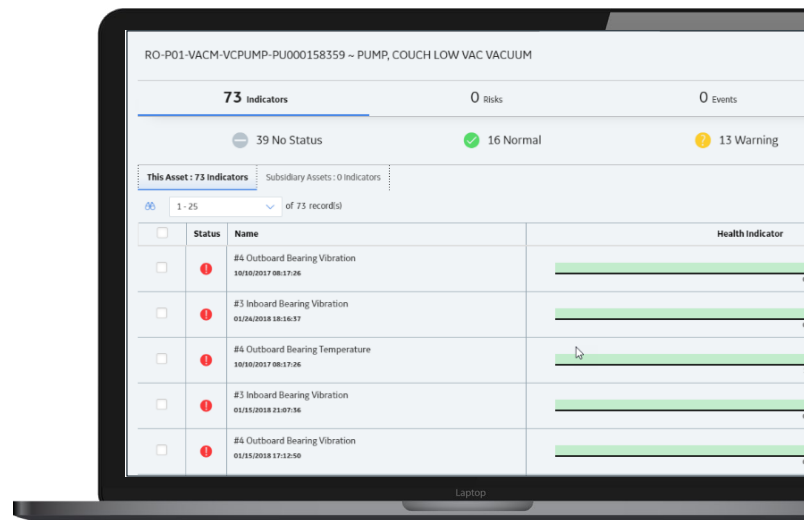
Rounds Pro

Rounds puts the power of APM in the hands of field personnel through a mobile application that lets them execute aspects of the asset strategy by monitoring asset performance and capturing condition data electronically in the field. Rounds also enables management of lubrication activities, which is a critical component of an effective reliability program. The application integrates equipment strategies into day-to-day operations and surveillance programs and facilitates the efficient assessment of asset performance.



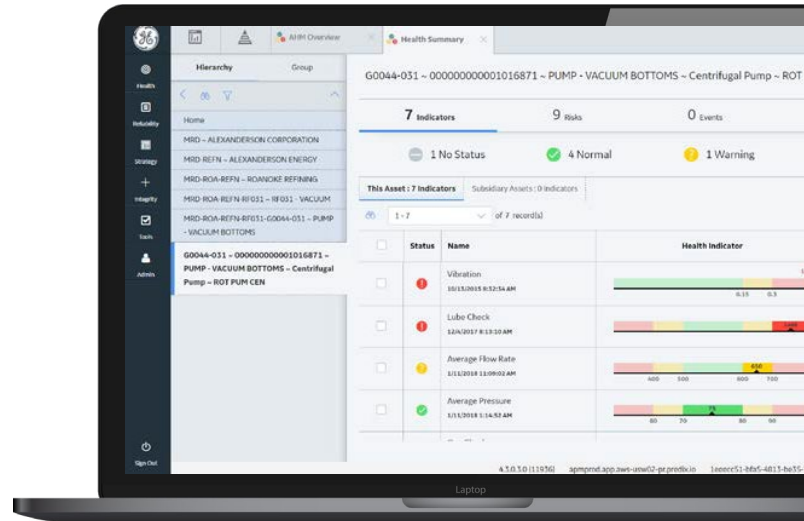
Calibration Manager

Calibration management provides tools and work processes for streamlining and managing the calibration of instrumentation and critical plant devices. This enables operators to improve the performance of instrumentation systems and optimize the instrument calibration strategies across the entire enterprise.



eLog

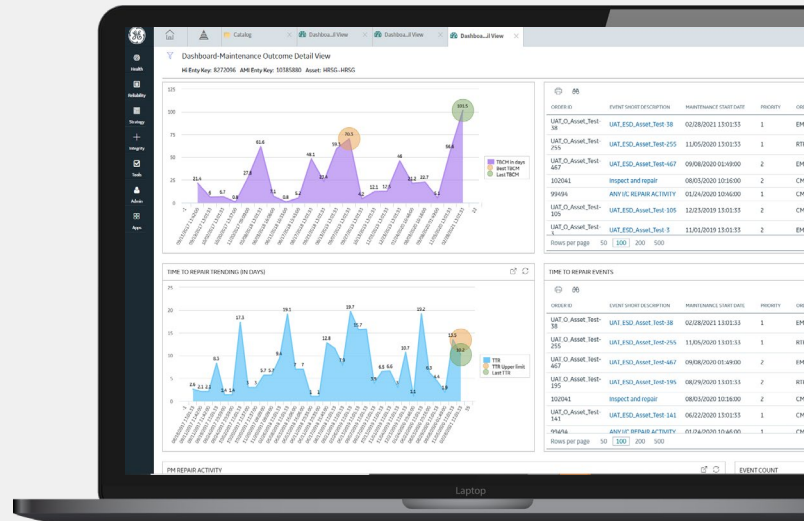
eLog is the system of record for APM Health activities. Here you can document scheduled and unscheduled events and contextualize those events in the scope of the entire operation. Once an event is logged, users can categorize the event based on type, duration, and shift. This gives end users and management the ability to ensure the right work is being done at the right time. eLog also provides reporting relating to when shifts begin and end, allowing your operation to meet compliance standards and key KPIs.



EXCLUSIVE

Accelerators

Health & Reliability Accelerators are designed to configure a holistic view of an asset's overall health. Leveraging deep domain expertise and APM Health solution intelligence, Health & Reliability Accelerators mine through several data inputs in APM detecting critical issues and other concerns on the equipment. The policy engine consumes the data calculating an overall health score to identify and prioritize the assets needing the most attention.



CASE STUDY

TASNEE's Asset Health Management program monitors the real time condition of the critical assets using GE Vernova's APM solution, which interfaces with process historian. The module displays health status in terms of "Normal," "Warning," and "Alert" indicators. This summary is very useful for the technical engineers to confirm machine required behavior as well segregate the abnormality due to non-controllable circumstances such as aging or wear out under the current load.

[Watch now](#)

APM SUITE

GE Vernova's APM increases asset reliability and availability while optimizing maintenance costs, mitigating operational risks, and reducing total cost of ownership (TCO). The software connects disparate data sources and uses advanced analytics to turn data into actionable insights while fostering collaboration and knowledge-management across the organization. Available on premises or in the cloud, APM works across all equipment, all OEMs, and all industries, across the plant, and across the fleet.



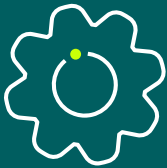
APM Health

- Unified view of assets' current state and health
- Rounds / Rounds Pro
- eLogs
- Health manager
- Calibration management



APM Reliability

- Predicting equipment issues
- Reliability analytics
- Root cause analysis
- Performance Intelligence
- Thermal Performance and Economic Advisory
- SmartSignal
- Predictive diagnostics
- Digital twin blueprints



APM Strategy

- Reduce risk and optimize life cycle cost
- RCM/FMEA
- Strategy management
- Strategy optimization
- Strategy implementation
- Lifecycle cost analysis



APM Integrity

- Helping to keep facilities contained and compliant
- Compliance management
- Inspection management
- Thickness monitoring
- Risk based inspection



APM Safety

- Reduce hazards risk within industrial processes
- Hazard analysis
- SIS management
- Management of change



APM Foundation / Essentials

- | | | |
|---|---|---|
| <ul style="list-style-type: none"> IT/OT Connectivity and Integration EAM systems HMI/SCADA, Historian, MES systems Edge OT connectivity and analytics GIS systems | <ul style="list-style-type: none"> Data Management and Processing Common asset model (or) hierarchy Analytics management and execution* Infrastructure Data Fabric* Policy designer End-to-end security | <ul style="list-style-type: none"> Monitoring, Analysis, and Event Management Advanced Visualization* Dashboards, interactive data analysis Criticality, alerts, cases, recommendations HMI visualizations and alarms* |
|---|---|---|

*Cloud only

EXPLORE THE BENEFITS OF OUR APM SOLUTIONS

Improve reliability, availability, and productivity

Optimize maintenance costs

Mitigate risk

Maintain technical expertise,
industry and organizational knowledge

Deliver continuous improvement

[Learn more](#) 

It's time to optimize
your asset condition
monitoring program
to reduce risk, lower
inspections costs, and
improve employee
productivity.