



# APM STRATEGY

Decrease O&M expenditures and increase profitability with a comprehensive asset strategy solution.



GE VERNOVA

# ADDRESSING YOUR MODERN BUSINESS CHALLENGES

Asset intensive industrial businesses manage substantial operating and maintenance (O&M) budgets that represent a considerable portion of their fixed costs, which directly impact their profitability. However, for many businesses their current asset management strategies are not under control, nor are they optimized and aligned to achieve the highest profitability at the lowest risk and cost. Many also lack the systems or processes in place to comply with ISO 55000 standards.

With respect to asset management strategies and practices, profitability is directly impacted due to:

## **Ineffective and inefficient equipment strategies**

Optimize by determining the most effective types and frequencies of tasks to achieve business objectives for risk mitigation, cost containment, and sustained reliability improvements.

## **Lack of standardization and control**

Implement best practice equipment maintenance, monitoring, and inspection strategies across the enterprise.

## **Lack of an integrated, holistic, and evergreen approach**

Establish dynamic equipment strategies that harmonize across functional areas to ensure a sustainable cycle of continuous improvement.

## **Operations & Maintenance Optimization**

APM Strategy provides a common methodology to develop and manage asset strategies by using a risk-based approach to conduct analysis of individual assets, a group of assets, or an asset system. By balancing risk, production goals, and resource investment, APM Strategy allows asset-intensive organizations to focus costs on the most critical assets — reducing maintenance and inventory costs, increasing availability and reliability, and moving away from reactive maintenance practices to a proactive approach.

## **SEE APM STRATEGY IN ACTION**

Follow a real-world example of a large asset-intensive producer experiencing equipment reliability and performance issues leading to increased risk exposure and higher costs. See how they utilize APM Strategy to:

- Rapidly deploy equipment strategies across the enterprise
- Optimize equipment strategies using a risk-based approach
- Integrate strategies for continuous improvement

[Launch interactive demo](#) 

APM Strategy supports the following work processes:

## **ASSESS CRITICALITY OF ASSETS**

## **IDENTIFY RISKS & MITIGATING ACTIONS**

## **OPTIMIZE MITIGATION STRATEGIES FOR RISK & COST**

## **MANAGE AND IMPLEMENT ASSET STRATEGIES**

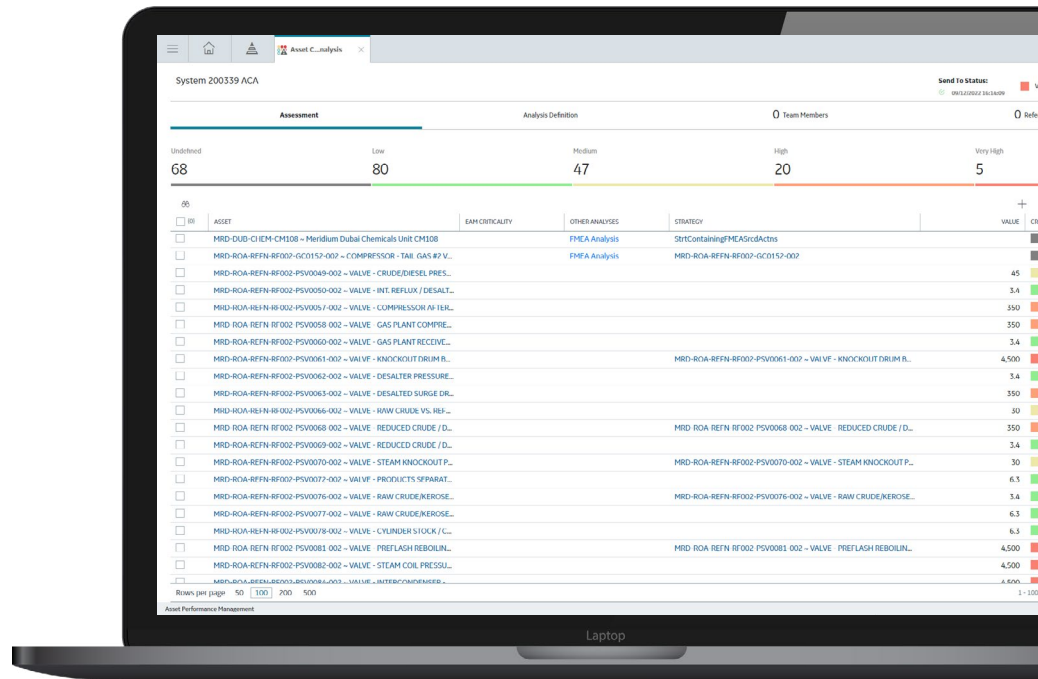
## **DRIVE CORRECTIVE ACTIONS & CONTINUOUS IMPROVEMENT**

# MODULES

## Asset Criticality Analysis (ACA)

### FOCUS ON CRITICAL ASSETS

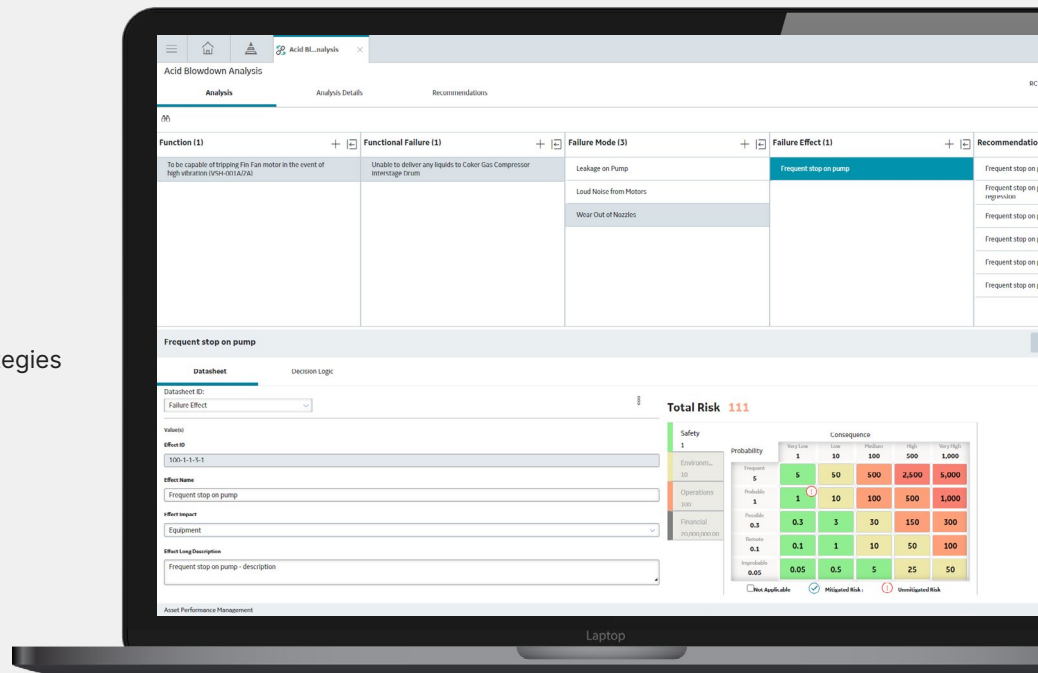
Enables users to define the criticality of assets. Users can determine which of their systems, locations, and pieces of equipment have the highest risk based on their organization's definitions.



## Reliability Centered Maintenance (RCM)

### ASSESS SYSTEMS RISK

By focusing on system functions, the RCM capability is designed to develop asset strategies that help reduce the effects of functional failures, which, for some systems, may have a more significant impact on production and costs than simple mechanical failures.

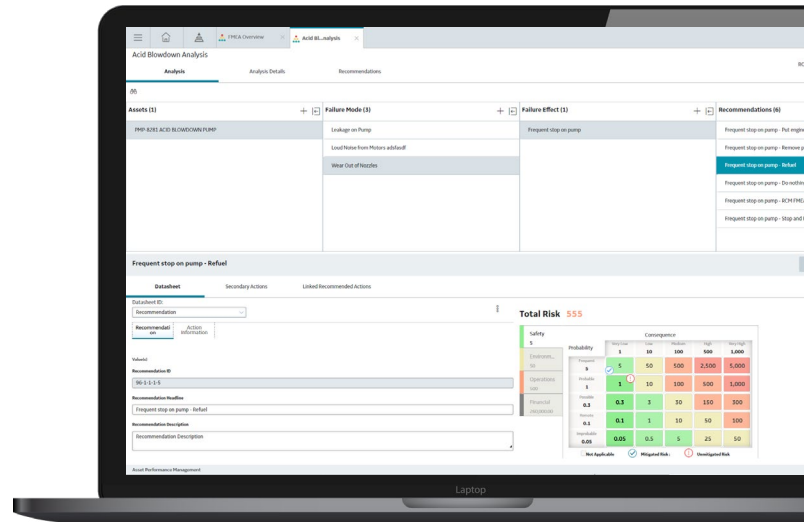


# MODULES

## Failure Modes and Effects Analysis (FMEA)

### ASSESS EQUIPMENT RISK

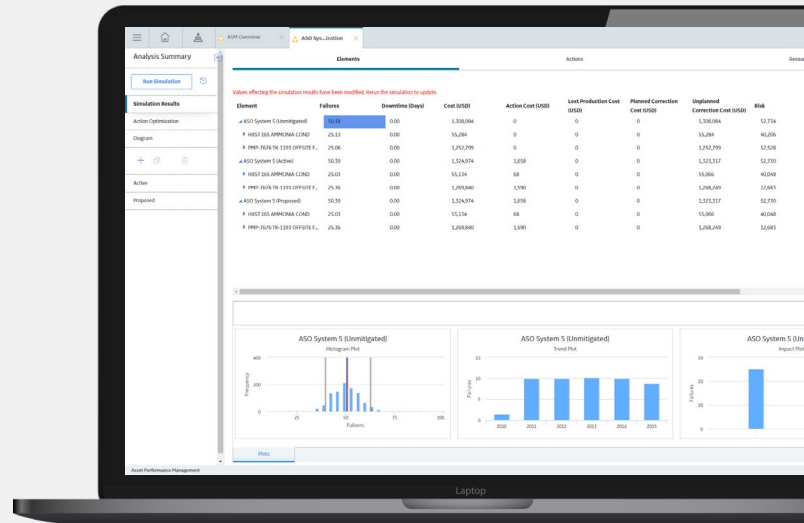
In contrast to the Reliability Centered Maintenance analysis, which focuses on functional failures at the system level, the Failure Modes and Effects Analysis capability facilitates the identification and mitigation of critical failure modes defined at the equipment level.



## Asset Strategy Optimization (ASO)

### QUANTITATIVE STRATEGY MODELING

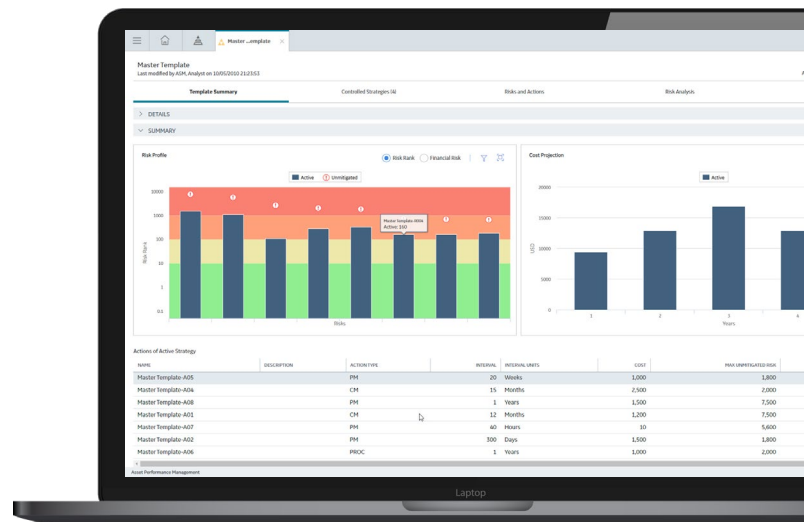
Extends the qualitative risk/cost analytical capabilities of Asset Strategy Management through advanced, quantitative strategy modeling and Monte Carlo simulation for assets and systems resulting in optimized availability, reliability and cost while managing risk.



## Asset Strategy Management (ASM)

### QUALITATIVE RISK ANALYSIS

Provides a common methodology to define risks and their mitigating actions for any asset, providing the ability to evaluate existing plans with basic qualitative risk analysis that is designed to be both straightforward and easy to use.



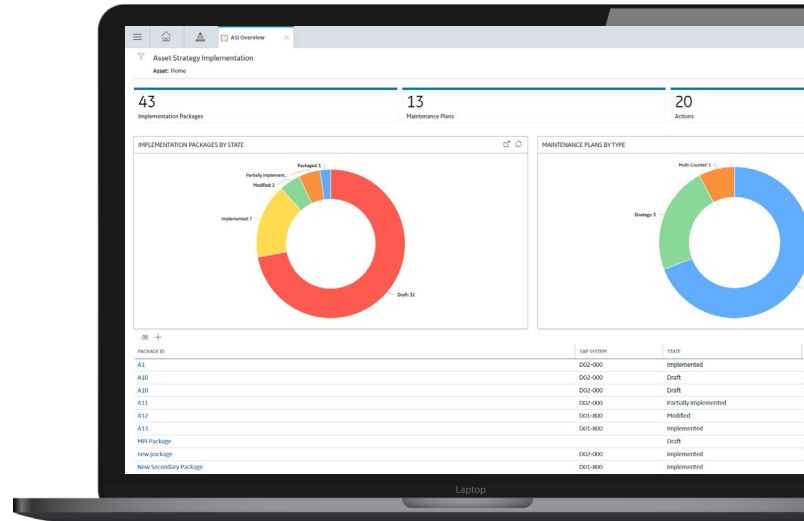
# MODULES

## Asset Strategy Implementation (ASI)

### IMPLEMENTATION WITH SAP

Enables users to build implementation packages containing maintenance plans, maintenance items, task lists, and operations to which strategy actions can be linked for the purposes of implementation in SAP.

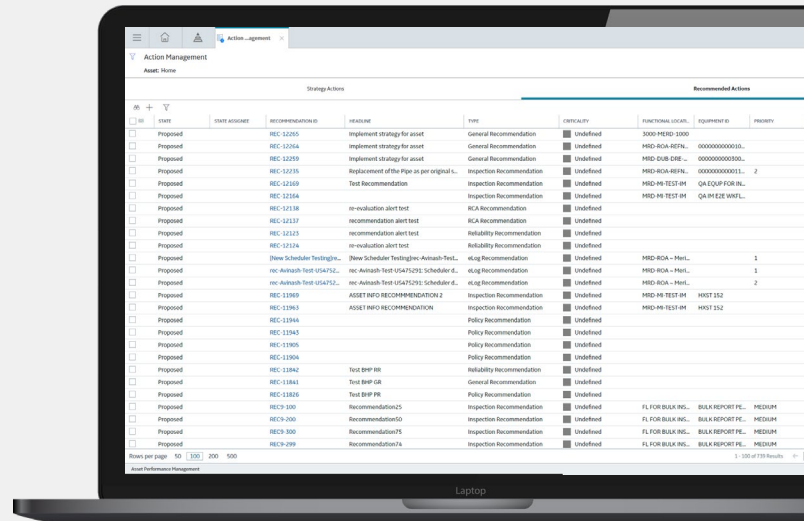
Available in the Cloud



## Action Management

### MANAGE CORRECTIVE ACTIONS

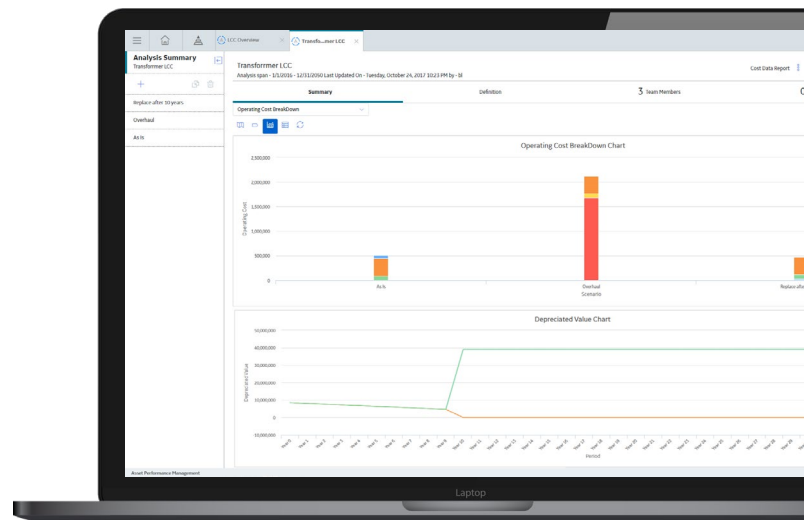
Enables users to manage recommended corrective actions generated from various sources across APM as well as implement planned actions that are defined with the Asset Strategy Management (ASM) application. It provides visibility and management of all actions within a single holistic view across the asset hierarchy.

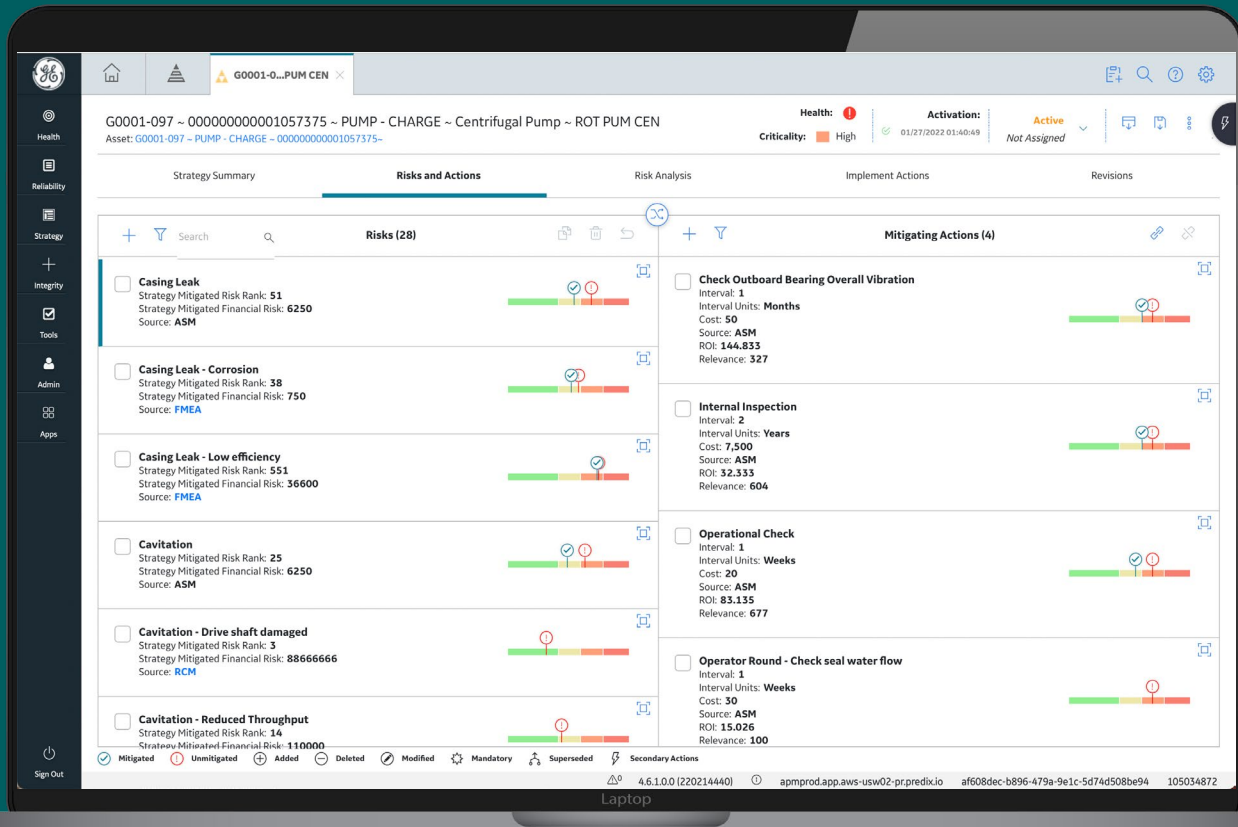


## Life Cycle Cost Analysis (LCC)

### BALANCE COSTS & PLAN BUDGETS

Asset lifecycle costs can be viewed from the perspective of the total cost of ownership of assets. By contributing to decisions regarding when to repair versus when to replace, asset strategies and equipment performance can be optimized over the long term, thereby helping to reduce costs for entire sites or fleets over defined accounting periods.






# ASSET STRATEGY ACCELERATORS

Pre-built maintenance strategy templates detailing defined risk and mitigating actions for an asset. Asset strategies target a wide range of criticality. Balance of Plant strategies include various supporting and auxiliary energy producing assets — ranging from rotating, mechanical, electrical, safety, and controls.


**OVER 860** Strategy templates

Covering a wide range of asset types for the Energy sector. Now available as FMEA templates.

[Learn more](#) 

## Asset Strategy Accelerators by Industry\*:

**820+** Power Generation\*\*

**650+** Oil & Gas

**30+** Mining & Metals

**10** Transmission & Distribution

\*Accelerator quantities are subject to change - Check the Accelerator Library for new additions

\*\*Includes Gas, Nuclear, Coal and Renewables

**GE Vernova's APM** boosts asset reliability, reduces maintenance costs, mitigates risks, and lowers Total Cost of Ownership (TCO). It integrates diverse data sources with advanced analytics for actionable insights and fosters collaboration and knowledge management. Available on premises or in the cloud, APM works with all equipment, OEMs, and industries across plants and fleets.



## APM Foundation/ Essentials

### IT/OT connectivity and integration

- EAM systems
- HMI/SCADA, historian, MES systems
- Edge OT connectivity and analytics
- GIS systems

### Data management and processing

- Common asset model (or) hierarchy
- Analytics management and execution\*
- Infrastructure Data Fabric\*
- Policy designer
- End-to-end security

### Monitoring, analysis, and event management

- Advanced visualization\*
- Dashboards, interactive data analysis
- Criticality, alerts, and recommendations
- HMI visualizations and alarms\*

\*Cloud only



## APM Reliability

### Predicting equipment issues early

- Reliability analytics
- Root cause analysis
- Performance Intelligence
- Thermal performance and economic advisory
- SmartSignal
- Predictive diagnostics
- Digital twin blueprints



## APM Health

### Unified view of assets' current state and health

- Rounds/Rounds Pro
- eLogs
- Health manager
- Calibration management



## APM Strategy

### Minimize risk and optimize lifecycle costs

- RCM/FMEA
- Strategy management
- Strategy optimization
- Strategy implementation
- Lifecycle cost analysis



## APM Safety

### Reduce hazards risk within industrial processes

- Hazard analysis
- SIS management
- Management of change



## APM Integrity

### Ensuring compliance and containment

- Compliance management
- Inspection management
- Thickness monitoring
- Risk Based Inspection (RBI)



# EXPLORE THE BENEFITS OF OUR APM SOLUTIONS

Improve reliability, availability, and productivity

Optimize maintenance costs

Mitigate risk

Maintain technical expertise,  
industry and organizational knowledge

Deliver continuous improvement

[Learn more](#) 

It's time to optimize  
your asset strategies  
to reduce risk exposure  
and improve profitability  
of critical equipment  
used in the facility.