



# Proficiency Plant Applications 2022

Data Purge Utility



**Proprietary Notice**

The information contained in this publication is believed to be accurate and reliable. However, General Electric Company assumes no responsibilities for any errors, omissions or inaccuracies. Information contained in the publication is subject to change without notice.

No part of this publication may be reproduced in any form, or stored in a database or retrieval system, or transmitted or distributed in any form by any means, electronic, mechanical photocopying, recording or otherwise, without the prior written permission of General Electric Company. Information contained herein is subject to change without notice.

© 2022 General Electric Company. All rights reserved.

**Trademark Notices**

GE, the GE Monogram, and Predix are either registered trademarks or trademarks of General Electric Company.

Microsoft® is a registered trademark of Microsoft Corporation, in the United States and/or other countries.

All other trademarks are the property of their respective owners.

We want to hear from you. If you have any comments, questions, or suggestions about our documentation, send them to the following email address:

[doc@ge.com](mailto:doc@ge.com)

# Table of Contents

Purging Data .....	1
Important issues .....	1
Supported Versions .....	1
Purge Configuration Dialog Box.....	2
What Data is Purged? .....	3
Tables Tab.....	3
Units (Event Based) Tab .....	5
Variables (Time Based) Tab.....	6
How Much Time Does Purging Data Take?.....	6
Plant Applications 4.4.1 .....	7
Plant Applications 4.3.1 .....	7
Plant Application 4.2.3.....	7
Plant Applications 3.0.215.....	7
Storage Tables for the Data Purge Configuration.....	8
PurgeConfig Table.....	8
PurgeConfig_Detail Table .....	8
PurgeResult Table .....	9
"How Do I" Topics .....	10
Connect to a Plant Applications Server.....	10
Purge Data from Selected Tables .....	11
Purge Time-Based Data Associated with Variables.....	12
Purge Event-Based Data Associated with Units .....	12
Save a Purge Configuration .....	13
Start a Data Purge .....	13
Delete a Purge Configuration .....	14
Stop Plant Applications Manager .....	14
Export a Purge Configuration .....	14
Import a Purge Configuration .....	15
Edit Retention Periods and Records Per Batch .....	15
Troubleshooting .....	16
Incompatible Version .....	16
Failed to Connect to Server.....	16

Database Purge Client Will Not Open ..... 16

# Purging Data

Over time, your Plant Applications database can accumulate an enormous amount of data. For a variety of reasons, you may find that you need to occasionally purge some of your data. You may be required by law to retain data for a certain time period and then purge it rather than archive it.

Release 6.1 of Plant Applications provided a Unified Manufacturing Database (UMDB) to combine a Proficy SOA database employing an S95 data model with a Plant Applications database. Data can be purged in light of the following scenarios:

- If running with a Plant Applications database, use the Plant Applications Database Purge utility to purge data.
- If running with a UMDB, use the SOA database purge utility to purge data in the S95 data model. Use the Plant Applications Database Purge utility to purge Plant Application data.

Plant Applications Database Purge is a utility that enables you to purge your unwanted data. You can purge data by table, event-based data associated with units, and time-based data associated with variables. After you configure a purge routine, you can save the configuration for re-use. You can also export and import a saved purge configuration. An online purge option is available.

With Plant Applications 6.2 SP3 SIM 1503, a new Purge client can be installed as a stand-alone client. Use this client if you want to purge TaskInstance data as described in [What Data is Purged](#).

Customers using previous releases of Plant Applications will continue to use the Plant Applications Purge utility. For Plant Applications 6.0 and higher, purging SOA data from a UMDB is a two-step process involving the Plant Applications and SOA databases.

The software along with additional information about purges is available at the GE Support Site, <https://digitalsupport.ge.com>. Refer to the *Important Product Information* document for information about releases.

## Important issues

There are three very important issues you must be aware of before you begin purging data.

- It is important to understand that the purge **permanently removes your data** and it cannot be recovered. To minimize the risk of losing data, you may wish to create a back-up of your database prior to purge. (The SOA purge utility backs up the data and does not delete it.)
- You must ensure that the **Plant Applications Manager service is stopped** before beginning the purge. To prevent the data purge from running slowly, it is recommended that no clients attempt to connect to the Plant Applications database during the purge. Therefore, it is best to schedule the data purge when your site has an extended period of downtime.

---

**IMPORTANT:** *Any client who opens Excel and has the Plant Applications Add-in for Excel installed will automatically attempt a connection to the Plant Applications database.*

---

- It is important to note that purging data reduces the amount of **used** space in the database; it does not reduce the size of the database. For instructions on shrinking the size of the database, consult your SQL Server documentation.

## Supported Versions

The new Purge client is supported by all versions of Plant Applications beginning with 6.2 SP3 SIM 1403.

## Purge Configuration Dialog Box

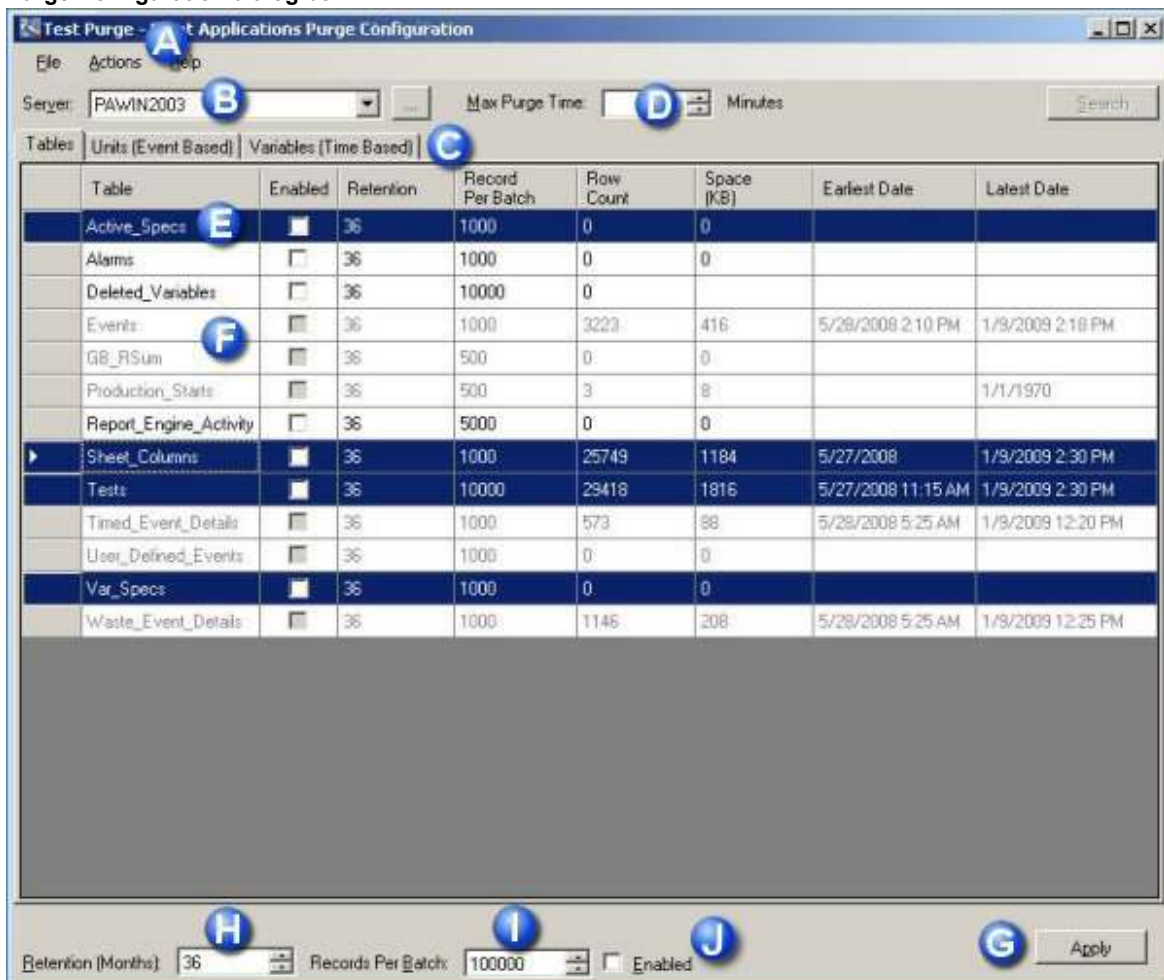
The data purge is configured through the Plant Applications Purge Configuration dialog box. There are three tabs that enable you to purge data:

- Tables
- Units (Event Based)
- Variables (Time Based)

You can select tables or units or variables or a combination. When you select units or variables, the retention period and records per batch for certain tables cannot be edited on the Tables tab.

**IMPORTANT:** Before you start a data purge, you **must** stop the Plant Applications Manager service. When you stop this service, it will automatically stop all other services that must no be running during a data purge. For more information, see the topic [Stop Plant Applications Manager](#) in this help file.

### Purge Configuration dialog box



- A** The title bar displays the name of the configured purge ("Test Purge" in the preceding image). If no purge is configured, the title displays "Untitled."
- B** The Server box displays the name of the server where the data to be purged resides. Click the drop-down arrow to select another server or click the  Browse button to add a server.
- C** The three tabs enable you to select how you want to purge data. You can purge data from tables, data associated with units, and data associated with time-based variables.

- D** Max Purge Time is the maximum number of minutes that the purge will run. The program checks the maximum purge time only after the number of records per batch has been purged for a selected table, unit or variable. Even if the maximum purge time expires before the specified number of records has been purged, the batch will still complete.
- E** Use the SHIFT key or CTRL key to select multiple rows, or click the top left-most grid box (to the left of the Table column heading) to select all rows.
- F** If you select units or variables, you will not be able to edit the retention period or records per batch for some tables.
- G** Clicking Apply will apply the values in Retention (Months) (**H**), Records Per Batch (**I**), and Enabled (**J**) for selected items. Keep in mind that clicking Apply will change every row that you have selected
- H** Retention (Months) is the number of months of data you want to keep. Everything older will be purged when you run a configured purge. Used with the Apply button (**G**). When you add units or variables, the number in this box is the default.
- I** Records Per Batch is the number of records per table or unit or variable that will be purged. Used with the Apply button (**G**). When you add units or variables, the number in this box is the default.
- J** Select Enabled to enable purging for the selected tables when using the Apply button (**G**). This option is available only on the Tables tab.

## What Data is Purged?

### Tables Tab

When you purge data for specific tables, all the data older than the retention period in the table are purged.

Tables tab	
Select...	Data purged from...
Active_Specs	<ul style="list-style-type: none"> <li>• Active_Specs: By expiration date (comments not deleted)</li> <li>• Var_Specs: AS_Id set to Null</li> <li>• Table_Fields_Values: Items that are linked</li> </ul>
Alarms	<ul style="list-style-type: none"> <li>• Alarms: By Alarm_Id</li> <li>• Alarm_History: Deleted when alarms are deleted (after all alarms &lt; retention limit deleted then from history where Alarm_Id &lt; minimum Alarm_Id from Alarms)</li> <li>• Comments: Items that are linked</li> </ul>
Deleted_Variables	<ul style="list-style-type: none"> <li>• Variables (Pu_Id = 0 and var_Id &gt; 0)</li> <li>• Tests</li> <li>• Test_History</li> <li>• Array_Data: Items that are linked to Tests</li> <li>• Comments: Attached to tests and variables</li> <li>• Table_Fields_Values: For tests and variables</li> </ul>
Events	<ul style="list-style-type: none"> <li>• Events: Deleted by timestamp and PU_Id. The oldest timestamp is found and deleted from that unit.</li> <li>• Event_History</li> <li>• Event_Details</li> <li>• Event_Detail_History</li> <li>• Event_Components</li> <li>• Event_Component_History</li> <li>• PrdExec_Input_Event: Null out Event_id</li> </ul>

	<ul style="list-style-type: none"> <li>• PrdExec_Input_Event_History</li> <li>• PrdExec_Input_Event_Transitions</li> <li>• PrdExec_Output_Event_History</li> <li>• PrdExec_Output_Event_Transitions</li> <li>• PrdExec_Output_Event: Null out Event_id</li> <li>• Waste_Event_Details</li> <li>• Waste_Event_Detail_History</li> <li>• Comments (events)</li> <li>• User_defined_events: Null out Event_Id</li> <li>• Table_Fields_Values (Events, Event_Components, Waste, Prdexec_input_event_History)</li> <li>• Event_Status_Transitions</li> </ul>
GB_Rsum	<ul style="list-style-type: none"> <li>• GB_Rsum</li> <li>• GB_RSum_Data</li> <li>• Comments: from GB-Rsum</li> </ul>
Production_Starts	<ul style="list-style-type: none"> <li>• Production_Starts: By end_time (fix chain on all records deleted)</li> <li>• Production_Starts_History</li> <li>• Comments</li> </ul>
Report_Engine_Activity	<ul style="list-style-type: none"> <li>• Report_Engine_Activity</li> </ul>
Sheet_Columns	<ul style="list-style-type: none"> <li>• Sheet_Columns: By Result_On</li> <li>• Sheet_Column_History: By Result_On</li> </ul>
TaskInstance (when using the Dataspace purge client with Plant Applications 6.2 SP3, SIM 1503, or higher)	<ul style="list-style-type: none"> <li>• TaskInstanceData</li> <li>• TaskStepDisplay</li> <li>• LindedDocumentInstance_TaskStepInstance</li> <li>• TaskStepInstanceData</li> <li>• TaskStepInstance</li> <li>• TaskInstance</li> </ul>
Tests	<ul style="list-style-type: none"> <li>• Tests: Deleted by Test_Id</li> <li>• Test_History: Deleted when tests are deleted (after all Tests &lt; retention limit deleted, delete from test_history where test_id &lt; minimum test_id from tests)</li> <li>• Comments: Comments that are linked to Tests</li> <li>• Table_Fields_Values: Items that are linked to Tests</li> <li>• Array_Data: Delete all data with Should_Delete = 1. Items that are linked to Tests</li> </ul>
Timed_Event_Details	<ul style="list-style-type: none"> <li>• Timed_Event_Details: Deleted by end_time and Pu_Id. Find the oldest end_time and delete from that unit</li> <li>• Timed_Event_Detail_History: delete when Timed_Event_Details deleted (after all Timed_Event_Details &lt; retention limit deleted. Delete from history where TED_Id &lt; minimum TED_Id from Timed_Event_Details)</li> <li>• Table_Fields_Values</li> <li>• Comments (action, cause, research, summary research and summary cause)</li> </ul>
User_Defined_Events	<ul style="list-style-type: none"> <li>• User_Defined_Events: Deleted by end_time and Pu_Id. Find the oldest end_time and delete from that unit</li> </ul>



	<ul style="list-style-type: none"> <li>• User_Defined_Event_History: Delete when User_Defined_Events deleted (after all User_Defined_Events &lt; retention limit deleted. Delete from history where UDE_Id &lt; minimum UDE_Id from User_Defined_Events)</li> <li>• Table_Fields_Values</li> <li>• Comments (comment_Id, Action ,cause and research)</li> </ul>
Var_Specs	<ul style="list-style-type: none"> <li>• Var_Specs: By expiration date (comments not deleted)</li> </ul>
Waste_Event_Details	<ul style="list-style-type: none"> <li>• Waste_Event_Details: Deleted by Timestamp and Pu_Id. Find the oldest timestamp and delete from that unit</li> <li>• Waste_Event_Detail_History: Delete when Waste_Event_Details deleted (after all Waste_Event_Details &lt; retention limit deleted. Delete from history where WED_Id &lt; minimum WED_Id from Waste_Event_Details)</li> <li>• Table_Fields_Values</li> <li>• Comments (action, cause and research)</li> </ul>

## Units (Event Based) Tab

On the Units (Event Based) tab, you can purge data associated with specific units. Data that is older than the retention period and associated with the selected units are purged from the following tables:

---

**NOTE:** When deleting by unit (PU\_Id), the associated test data is also deleted.

---

- **Events:** Deleted by timestamp and PU\_Id. The oldest timestamp is found and deleted from that unit.
  - Event\_History
  - Event\_Details
  - Event\_Detail\_History
  - Event\_Components
  - Event\_Component\_History
  - PrdExec\_Input\_Event: Null out Event\_id
  - PrdExec\_Input\_Event\_History
  - PrdExec\_Input\_Event\_Transitions
  - PrdExec\_Output\_Event\_History
  - PrdExec\_Output\_Event\_Transitions
  - PrdExec\_Output\_Event: Null out Event\_id
  - Waste\_Event\_Details
  - Waste\_Event\_Detail\_History
  - Comments (Events)
  - User\_defined\_events: Null out Event\_Id
  - Table\_Fields\_Values (Events, Event\_Components, Waste, Prdexec\_input\_event\_History)
  - Event\_Status\_Transitions
- **GB\_Rsum**
  - GB\_RSum\_Data
  - Comments: from GB-Rsum

- **Production\_Starts:** By end\_time (fix chain on all records deleted)
  - Production\_Starts\_History
  - Comments
- **Timed\_Event\_Details:** Deleted by end\_time and Pu\_Id. Find the oldest end\_time and delete from that unit
  - Timed\_Event\_Detail\_History: delete when Timed\_Event\_Details deleted (after all Timed\_Event\_Details < retention limit deleted. Delete from history where TED\_Id < minimum TED\_Id from Timed\_Event\_Details)
  - Table\_Fields\_Values
  - Comments (action, cause, research, summary research and summary cause)
- **User\_Defined\_Events:** Deleted by end\_time and Pu\_Id. Find the oldest end\_time and delete from that unit
  - User\_Defined\_Event\_History: Delete when User\_Defined\_Events deleted (after all User\_Defined\_Events < retention limit deleted. Delete from history where UDE\_Id < minimum UDE\_Id from User\_Defined\_Events)
  - Table\_Fields\_Values
  - Comments (comment\_Id, Action, cause and research)
- **Waste\_Event\_Details:** Deleted by Timestamp and Pu\_Id. Find the oldest timestamp and delete from that unit
  - Waste\_Event\_Detail\_History: Delete when Waste\_Event\_Details deleted (after all Waste\_Event\_Details < retention limit deleted. Delete from history where WED\_Id < minimum WED\_Id from Waste\_Event\_Details)
  - Table\_Fields\_Values
  - Comments (action, cause and research)

### Variables (Time Based) Tab

On the Variables (Time Based) tab, you can purge data for specific variables. Data that is older than the retention period and associated with the selected variable are purged from the following tables:

- Tests: Deleted by Test\_Id
- Test\_History: Deleted when tests are deleted (after all Tests < retention limit deleted, delete from test\_history where test\_Id < minimum test\_Id from tests)
- Comments: Comments that are linked to Tests
- Table\_Fields\_Values: Items that are linked to Tests
- Array\_Data: Delete all data with Should\_Delete = 1. Items that are linked to Tests

## How Much Time Does Purging Data Take?

The time it takes for you to purge your data will depend on a number of variables, such as server size and configuration, your version of Plant Applications, and network configuration. However, to help you determine how much time is necessary for you to set aside to purge your data, we are providing the results we experienced given our configuration.

It is important to know that the initial purge will take more time than subsequent purges, depending on the amount of data you initially purge.

---

**NOTE:** This information is not presented as a guarantee of what you should expect, but as only a guide to help you make better informed decisions.

---

**Plant Applications 4.4.1**

Processor: 3.0GHz - Core 2 Duo		Memory: 4GB	DB Size: 106GB	OS: Windows Server 2003	
Purge	# of records purged	Records purged per minute	Time to purge	Records per batch	
Active_Specs	5095	11280	00:00:34	10000	
Alarms	1657646	462540	00:03:37	1000	
Alarms	2954714	529200	00:05:34	1000	
Deleted Variables	410298	20760	00:19:44	10000	
Deleted Variables	3172864	41220	01:16:59	10000	
Events	17764270	86880	03:24:24	3000	
GB_Rsum	10011	300300	00:00:04	1000	
Production_Starts	466804	86160	00:05:24	1000	
Production_Starts	1352		00:00:04	1000	
Report_Engine_Activity	64644	1291880	00:00:04	5000	
Sheet_Columns	5692832	960720	00:05:49	10000	
Tests	257058	11460	00:22:59	10000	
Tests	13447838	97380	02:18:07	1000	
Tests	8925576	88920	01:40:25	1000	
Timed_Event_Details	373205	23820	00:15:39	20000	
Var_Specs	99205	106260	00:00:59	15000	
Waste_Event_Details	1320	79200	00:00:04	2000	
Units	18602929	58020	05:20:24	25000	
Units	99296	24300	00:04:00	1000	
Units	1934509	46440	00:41:39	1000	
Units	7378	13380	00:00:34	1000	
Variables	114876	191460	00:00:39	1000	

**Plant Applications 4.3.1**

Processor: 3.0GHz - Core 2 Duo		Memory: 4GB	DB Size: 106GB	OS: Windows Server 2003	
Purge	# of records purged	Records purged per minute	Time to purge	Records per batch	
Alarms	137028	373680	00:00:24	2000	
Production_Starts	516730	322920	00:01:39	5000	
Active_Specs	10546	11700	00:00:54	200	

**Plant Application 4.2.3**

Processor: 3.0GHz - Core 2 Duo		Memory: 4GB	DB Size: 106GB	OS: Windows Server 2003	
Purge	# of records purged	Records purged per minute	Time to purge	Records per batch	
Active_Specs	5121	51180	00:00:06	1000	
Alarms	16463	493860	00:00:02	1000	
GB_Rsum	10379	191520	00:00:03	500	
Units	4761	45000	00:00:39	1000	
Variables	114876	229740	00:00:49	1000	

**Plant Applications 3.0.215**

Processor: P3.8 GHz - Pentium 4		Memory: 4GB	DB Size: 170GB	OS: Windows Server 2000	
---------------------------------	--	-------------	----------------	-------------------------	--

Purge	# of records purged	Records purged per minute	Time to purge	Records per batch
Active_Specs	2206	26460	00:00:09	1000
Alarms	3757	225420	00:00:04	1000
Alarms	5218	313080	00:00:04	1000
Events	175767	24840	00:07:04	1000
Events	30044	13140	00:02:19	1000
GB_Rsum	577627	121980	00:04:44	500
Production_Starts	9064	108720	00:00:09	500
Sheet_Columns	36708	244680	00:00:09	1000
Sheet_Columns	147369	315780	00:00:29	1000
Tests	34368890	72660	07:52:59	1000
Timed_Event_Details	11382	170700	00:00:04	1000
Timed_Event_Details	1202	36060	00:00:04	1000
Var_Specs	77678	122640	00:00:39	1000

## Storage Tables for the Data Purge Configuration

Three new tables that store purge configuration information have been added to the Plant Applications database. This is to allow for the creation, saving, and use of data purge configuration templates.

### PurgeConfig Table

The PurgeConfig table contains one record for each saved purge configuration and has the following columns:

- **Purge\_ID:** The auto-incremented ID of the purge configuration.
- **Purge\_Date:** The creation time of the purge configuration.
- **Purge\_Desc:** The name of the purge configuration, which is typed when you save your configuration.
- **TimeSliceMinutes:** The maximum amount of time this purge configuration will run. This is the number of minutes entered in the **Max Purge Time** box in the Purge Configuration dialog box.

### PurgeConfig\_Detail Table

The PurgeConfig\_Detail table contains a number of records for each purge configuration, depending on the selection made during the configuration. One or more records will contain information about a certain purge configuration. For example, if your purge configuration includes a production unit, table, and variable, then a set of three records will be created for this data purge configuration.

- **Purge\_ID:** The auto-incremented ID of the purge configuration.
- **TableName:** The name of the table from which data will be purged.
- **PU\_ID:** The production unit ID number of the production unit from which data will be purged.
- **Var\_Id:** The variable ID number of the time-based variable
- **RetentionMonths:** The number of months to retain data. This is the number entered in the Retention box in the Purge Configuration dialog box.
- **TimeSliceMinutes:** The maximum amount of time this purge configuration will run. This is the number of minutes entered in the **Max Purge Time** box in the **Purge Configuration** dialog box.

## Data Purge Utility

- **ElementPerBatch:** The number of records the purge will run before it compares the elapsed time with the maximum time to consume. This is the number entered in the **Records per batch** box in the **Purge Configuration** dialog box.

## PurgeResult Table

The PurgeResult table stores the progress of the purge. A new record is added when a table is purged or when the number of records per batch has been met. The PurgeResult table has the following columns:

- **PurgeResult\_Id:** The auto-incrementing record ID.
- **PurgeResult\_Date:** The timestamp of the purge record.
- **PurgeResult\_Desc:** A brief description of the table from which records were purged.
- **PurgeResult\_Recs:** The number of records that were purged from the table.
- **RunId:** The auto-incrementing ID of the purge. Each time a purge is run, this number increments by one.
- **TotalSeconds:** The length of time, in seconds, that the purge ran.

# "How Do I" Topics

Consult the following topics for more information on configuring and using the Plant Applications Database Purge Utility.

- [Connect to a Plant Applications Server](#)
- [Delete a purge configuration](#)
- [Edit retention periods and records per batch](#)
- [Export a purge configuration](#)
- [Import a purge configuration](#)
- [Purge data for selected tables](#)
- [Purge event-based data for selected units](#)
- [Purge time-based data for selected variables](#)
- [Start a data purge](#)
- [Save a purge configuration](#)
- [Stop Plant Applications Manager](#)

## Connect to a Plant Applications Server


Before you can purge Plant Applications data, you must run **DBPurgeServerSetup.exe** on each Plant Applications server where you want to purge data. After you have run **DBPurgeServerSetup.exe** on each server and installed the correct version of DPPurgeSetup.exe, you can add and select those servers from the Plant Applications Purge Configuration dialog box.

---

**NOTE:** *It may take a moment or two the first time you connect to a Plant Applications server.*

---

To connect to a Plant Applications server:

1. Click Start, point to All Programs, point to Proficy Plant Applications Database Purge, and click Plant Applications Database Purge. The Plant Applications Purge Configuration dialog box appears.
2. Click the  **Browse** button next to the Server list. The Connect Server dialog box appears.
3. Do one of the following:
  - If the desired server is listed:
    - a. Right-click the server and click **Connect**. **Yes** is displayed in the Connected column.
    - b. Click **Close**. The server is listed in the Server list.

---

**NOTE:** *If Failed to connect to server: could not find stored procedure 'spPU\_GetPlantModel.' is displayed, you must run the server install on that server.*

---

- If the desired server is not listed:
  - a. Right-click anywhere in the dialog box and click New. The Server dialog box appears.
  - b. In the Server Name box, type the name of the server you want to connect to.
  - c. In the User box, type the name of a Plant Applications site user.
  - d. In the Password box, type the password of the user.

---

*NOTE: Any Plant Applications user can connect to a Plant Applications server. However, to execute a purge, you must be connected as a user with administrator rights in the Administrator security group.*

---

- e. Click **OK**. The server is listed in the Connect Server dialog box.
- f. Click **Close**. The server is listed in the Server list.

## Purge Data from Selected Tables

You can configure a data purge for specific tables. You can select multiple tables (rows) using the SHIFT or CTRL keys or click the top left-most grid box (to the left of the Table column heading) to select all tables (rows). Use the Apply button at the bottom of the dialog box to change the retention period or records per batch and to enable the purge configuration for the selected tables.

---

*NOTE: The first time you purge data, if you are purging data from Deleted\_Variables, it may be more efficient to first purge data from the Tests table, then purge data from the Deleted Variables table and any other tables.*

---

You cannot search for and select units if you select one or more of the following tables. Furthermore, if you select units on the Units tab, the retention period and records per batch cannot be changed for the following tables:

- Events
- GB\_RSum
- Production\_Starts
- Timed\_Event\_Details
- User\_Defined\_Events
- Waste\_Event\_Details

You cannot search for and select variables if you select the following table. Furthermore, if you select variables on the Variables tab, the retention period and records per batch cannot be changed for the following table:

- Tests

To configure a data purge for selected tables:

1. Click Start, point to All Programs, point to Proficy Plant Applications Database Purge, and click Plant Applications Database Purge. The Plant Applications Purge Configuration dialog box appears.
2. In the **Max Purge Time** box, enter the maximum number of minutes you want the purge to run.

Max Purge Time is the maximum number of minutes that the purge will run. The program checks the maximum purge time only after the number of records per batch has been purged for a selected table, unit or variable. Even if the maximum purge time expires before the specified number of records has been purged, the batch will still complete.

3. On the **Tables** tab, edit the retention period and records per batch, if desired. For instructions on editing retention periods and records per batch, see the topic [Edit retention periods and records per batch](#).
4. For each row (table) from which data is to be purged, select the **Enabled** box.
5. If desired, click the Units (Event Based) or Variables (Time Based) tabs to purge data associated with units or variables. For instructions on purging data associated with units, see

the topic [Purge event-based data for selected units](#). For instructions on purging data associated with variables, see the topic [Purge time-based data for selected variables](#).

6. After you have configured your purge, save your configuration. For detailed instruction on saving a configuration, see the topic [Save a purge configuration](#).

---

**NOTE:** *You must save your configuration before you can run a purge.*

---

## Purge Time-Based Data Associated with Variables

You can purge time-based data associated with selected variables. You can select variables by data source, sampling type, and event type, or by production line and production unit.

---

**NOTE:** *The first time you purge data, if you are purging data from Deleted\_Variables, it may be more efficient to first purge data from the Tests table, then purge data from the Deleted Variables table and any other tables.*

**IMPORTANT:** *When you select variables, the retention period and records per batch for the Tests table cannot be changed.*

---

To configure a data purge for selected variables:

1. Click Start, point to All Programs, point to Proficy Plant Applications Database Purge, and click Plant Applications Database Purge. The Plant Applications Purge Configuration dialog box appears.
2. On the **Variables (Time Based)** tab, click **Search**. The **Search Variable** dialog box appears.
3. Select one or more time-based variables and click **OK**. The selected variables are added to the **Variables (Time Based)** page.

---

**NOTE:** *The retention period and records per batch default to the numbers in the Retention (Months) and Records Per Batch fields at the bottom of the Plant Applications Purge Configuration dialog box.*

**NOTE:** *To delete one or more variables, select the variable(s) and press DELETE.*

---

4. If necessary, change the retention period and the records per batch. For more information, see the topic, [Editing retention periods and records per batch](#).
5. If desired, click the Units (Event Based) or Tables tabs to purge data associated with units or variables. For instructions on purging data associated with units, see the topic [Purge event-based data for selected units](#). For instructions on purging data from specific tables, see the topic [Purge data for selected tables](#).
6. Save your configuration. For detailed instruction on saving a configuration, see the topic, [Save a purge configuration](#).

---

**NOTE:** *You must save your configuration before you can run a purge.*

---

## Purge Event-Based Data Associated with Units

You can purge event-based data associated with specific units. You cannot purge data associated with units if one or more of the following tables have been selected on the Tables tab:

- Events
- GB\_RSum
- Production\_Starts
- Timed\_Event\_Details
- User\_Defined\_Events



## Data Purge Utility

- Waste\_Event\_Details

To configure a data purge for selected units:

1. Click Start, point to All Programs, point to Proficy Plant Applications Database Purge, and click Plant Applications Database Purge. The Plant Applications Purge Configuration dialog box appears.
2. In the Max Purge Time box, enter the maximum number of minutes you want the purge to run.
3. Max Purge Time is the maximum number of minutes that the purge will run. The program checks the maximum purge time only after the number of records per batch has been purged for a selected table, unit or variable. Even if the maximum purge time expires before the specified number of records has been purged, the batch will still complete.
4. On the Units (Event Based) tab, click Search. The Search Production Unit dialog box appears which you use to select the production units.

---

**NOTE:** *The retention period and records per batch default to the numbers in the Retention (Months) and Records Per Batch fields at the bottom of the Plant Applications Purge Configuration dialog box.*

---

**NOTE:** *To delete one or more units, select the unit(s) and press DELETE.*

---

5. If necessary, change the retention period and the records per batch. For more information, see the topic [Editing retention periods and records per batch](#).
6. If desired, click the Tables or Variables (Time Based) tabs to purge data associated with units or variables. For instructions on purging data from specific tables, see the topic [Purge data for selected tables](#). For instructions on purging data associated with variables, see the topic [Purge time-based data for selected variables](#).
7. Save your configuration. For detailed instruction on saving a configuration, see the topic [Save a purge configuration](#).

---

**NOTE:** *You must save your configuration before you can run a purge.*

---

## Save a Purge Configuration

1. On the **File** menu, click **Save**. The **Configuration Name** dialog box appears.
2. Type the name of the purge configuration and click **OK**.

## Start a Data Purge

Before you begin a data purge, you must first ensure that the [Plant Applications Manager service is stopped](#) and that no Plant Applications clients attempt to connect during the data purge; otherwise, the data purge will be stopped. When you stop the Plant Applications Manager, all Proficy Server services are automatically stopped except for the following:

- Proficy Enterprise Connector service
- Proficy Licensing service
- Proficy Message Directory service
- Proficy Server License Manager service
- Proficy Server Router service

---

**IMPORTANT:** *Because the Proficy Licensing service remains started, any client that has the Excel Add-in installed will attempt to connect to Plant Applications when Excel is started. If this happens, the data purge will be stopped.*

---

To start a data purge:

1. In the Purge Configuration dialog box, on the **File** menu, click **Open**. The **Open Configuration** dialog box appears.
2. Click the purge configuration you want to run and then click **OK**.
3. On the **Actions** menu, click **Execute Purge Plan**. A warning message appears.
4. Click **Yes** to begin the data purge. The **Purge Monitor** dialog box appears.
5. A message appears notifying you when the purge is completed.
6. Click **OK**.
7. Click **Close** in the **Purge Monitor** dialog box.
8. Close the **Purge Configuration** dialog box.

## Delete a Purge Configuration

To delete a purge configuration:

1. In the Purge Configuration dialog box, on the **File** menu, click **Delete**. The **Delete Configuration** dialog box appears.
2. Select the configuration(s) you want to delete and click **OK**. A confirmation message appears.
3. Click **OK**. The purge configuration is deleted.

## Stop Plant Applications Manager



Before you begin a data purge, you must stop the Plant Applications Manager service. When you stop this service, it will automatically stop all other services that cannot be running during a data purge.

---

**NOTE:** *The Proficy Server License Manager service will remain started and must be kept started for the data purge to run.*

---

To stop the Plant Applications Manager service:

1. In the Plant Applications Administrator, expand the Server Manager tree and expand  **Server Management**.
2. Double-click  **Control Services**. The **Plant Applications Control** dialog box appears.  

---

*You may be required to enter your user name and password.*

---
3. Click **Stop PlantMgr**. The state of the services will display Stopped.
4. When the data purge is complete, click **Start PlantMgr** to restart the services.

## Export a Purge Configuration

After you configure and save a purge plan, you can export it to a CSV file and use that file to import it onto another server. When you export a purge plan, only the configuration information is exported.

To export a purge plan:

1. Click Start, point to All Programs, point to Proficy Plant Applications Database Purge, and click Plant Applications Database Purge. The Plant Applications Purge Configuration dialog box appears.
2. Do one of the following:

## Data Purge Utility

- Configure a purge
  - Open a purge plan
3. Click the **Actions** menu and click **Export**. The **Save As** dialog box appears.
4. Navigate to where you want to save your export file, type the file name and click **Save**.

## Import a Purge Configuration

When you import a purge plan, only the configuration information is imported. You must save it before you execute it.

To import a purge plan:

1. Click **Start**, point to **All Programs**, point to **Proficy Plant Applications Database Purge**, and click **Plant Applications Database Purge**. The **Plant Applications Purge Configuration** dialog box appears.
2. Click the **Actions** menu and click **Import**. The **Open** dialog box appears.
3. Navigate to the .CSV file and click **Open**. The configuration is imported.
4. Save the configuration. For more information, see the topic [Save a purge configuration](#).
5. Start the data purge. For more information, see the topic [Start a data purge](#).

## Edit Retention Periods and Records Per Batch

You can edit retention periods and records per batch for multiple rows or for a single row.

To edit a single row:

1. Click **Start**, point to **All Programs**, point to **Proficy Plant Applications Database Purge**, and click **Plant Applications Database Purge**. The **Plant Applications Purge Configuration** dialog box appears.
2. Click the cell for the retention period or records per batch you want to change and type the new number.
3. For tables only, select the **Enabled** box to enable purging for the table. If the Enabled box is not selected, the table will not be purged.

To edit multiple rows:

1. Click **Start**, point to **All Programs**, point to **Proficy Plant Applications Database Purge**, and click **Plant Applications Database Purge**. The **Plant Applications Purge Configuration** dialog box appears.
2. Enter the retention period in the **Retention (Months)** box.
3. Enter the records per batch in the **Records Per Batch** box.
4. For tables only, select the **Enabled** box to enable purging for the table. If the Enabled box is not selected, the table will not be purged. The **Enabled** option is available only on the **Tables** tab.
5. Select the rows you want to edit, using the SHIFT key to select a range of rows or the CTRL key to select single rows or, to select all rows, click the top left-most cell in the grid (left of the Table column heading).
6. Click the **Apply** button. Your changes are applied to all the selected rows on the current tab. Rows selected on other tabs are not changed.

# Troubleshooting

Consult the following topics for help troubleshooting issues with the Plant Applications Database Purge utility.

- [Incompatible version](#)
- [Failed to connect to server](#)

## Incompatible Version

### Error Message

"DBPurge is incompatible with the version of Plant Applications Client installed on this computer. Please download the DBPurge installer matching the client version and run the Setup."

### Cause

The version of the Plant Applications Database Purge must match the version of the Plant Applications Client. For example, if you are using version 4.4.1 of the Plant Applications Client, then you must install DBPurgeSetup441.exe

### Solution

Install the correct version of the Plant Applications Database Purge.

## Failed to Connect to Server

### Error Message

Failed to connect to server: Could not find stored procedure 'spPU\_GetPlantModel'.

### Cause

You may have installed the Plant Applications Database Purge client on a computer that has the Plant Applications server installed, but you have not installed DBPurgeServerSetup.exe. When you start the Plant Applications Database Purge client, it attempts to connect to the Plant Applications server on the same computer.

### Solution

You can install DBPurgeServerSetup.exe on the computer or in the Plant Applications Database Purge client, connect to a Plant Applications server where you have installed DBPurgeServerSetup.exe.

## Database Purge Client Will Not Open

### Problem

Database Purge client does not start or open.

### Cause

The version of the Database Purge client does not match the version of Plant Applications Server and Plant Applications Client.

### Solution

Uninstall the current version of the Database Purge client and install the correct version.