



GE VERNOVA

**Asset Performance Management**  
**On-Premises APM**  
**V5.2.2.0.0**

**Single Sign On**

# Contents

<b>Chapter 1: Overview</b>	<b>1</b>
Overview of Single Sign-On	2
SSO Workflow	2
<b>Chapter 2: Set up APM SSO</b>	<b>3</b>
About Setting Up APM SSO	4
Configure Azure Active Directory as the Identity Provider (IDP)	4
Configure Identity Provider (IDP) on Active Directory	9
<b>Chapter 3: Enable SSO</b>	<b>46</b>
About Enabling APM SSO	47
Enable SSO On Site Authentication Using Active Directory	47
Enable SSO Off-Site Authentication Using APM Server Setup	47
Enable OAuth for APM using SSO Off-Site	48
<b>Chapter 4: Configure the APM Server</b>	<b>49</b>
Configure APM Server	50

# Copyright Digital, part of GE Vernova

© 2025 GE Vernova and/or its affiliates. All rights reserved.

GE, the GE Monogram, and Predix are trademarks of General Electric Company used under trademark license.

This document may contain Confidential/Proprietary information of GE Vernova and/or its affiliates. Distribution or reproduction is prohibited without permission.

THIS DOCUMENT AND ITS CONTENTS ARE PROVIDED "AS IS," WITH NO REPRESENTATION OR WARRANTIES OF ANY KIND, WHETHER EXPRESS OR IMPLIED, INCLUDING BUT NOT LIMITED TO WARRANTIES OF DESIGN, MERCHANTABILITY, OR FITNESS FOR A PARTICULAR PURPOSE. ALL OTHER LIABILITY ARISING FROM RELIANCE UPON ANY INFORMATION CONTAINED HEREIN IS EXPRESSLY DISCLAIMED.

Access to and use of the software described in this document is conditioned on acceptance of the End User License Agreement and compliance with its terms.



# Chapter 1

---

## Overview

### Topics:

- [Overview of Single Sign-On](#)
- [SSO Workflow](#)

## Overview of Single Sign-On

SSO is a process that allows pre-authenticated users to access APM, without having to re-enter their credentials.

The APM user logs on initially using a form-based enterprise login screen. SSO is a common procedure in enterprises, where a user logs in once and gains access to different applications without the need to re-enter log-in credentials at each application. SSO authentication facilitates seamless network resource usage. SSO mechanisms vary, depending on application type.

SSO advantages include:

- Eliminates credential re-authentication.
- Streamlines local and remote application and desktop workflow.
- Minimizes phishing.
- Improves compliance through a centralized database.
- Provides detailed user access reporting.

APM supports the following types of authentication for SSO:

- Pass-through authentication  
Enables the users to enter their Windows credentials in the APM login page and APM validates the credentials against Active Directory.
- Security Assertion Markup Language (SAML) authentication  
Enables the users to navigate to the SSO URL (hosted on the APM Application Server) that redirects the browser to a preconfigured URL (not hosted on the APM Application Server), which is the Identity Provider (IDP). If there are multiple databases, and when the user selects a database, the user account is then authenticated and the IDP provides the web browser a token through a cookie. If the token is valid, the user can access APM.

## SSO Workflow

This workflow provides the basic, high-level steps for using this module. The steps and links provided in the workflow do not necessarily reference every possible procedure.

### Procedure

1. [Set up APM SSO by configuring an identity provider.](#)
2. [Enable SSO on-site or off-site authentication.](#)
3. [Configure the APM server.](#)

# Chapter 2

---

## Set up APM SSO

### Topics:

- [About Setting Up APM SSO](#)
- [Configure Azure Active Directory as the Identity Provider \(IDP\)](#)
- [Configure Identity Provider \(IDP\) on Active Directory](#)

# About Setting Up APM SSO

## About Setting up APM SSO

To set up APM SSO, perform one of the following tasks:

- [Configure Azure Active Directory as the Identity Provider \(IDP\)](#)
- [Configure IDP on Active Directory](#)

## Configure Azure Active Directory as the Identity Provider (IDP)

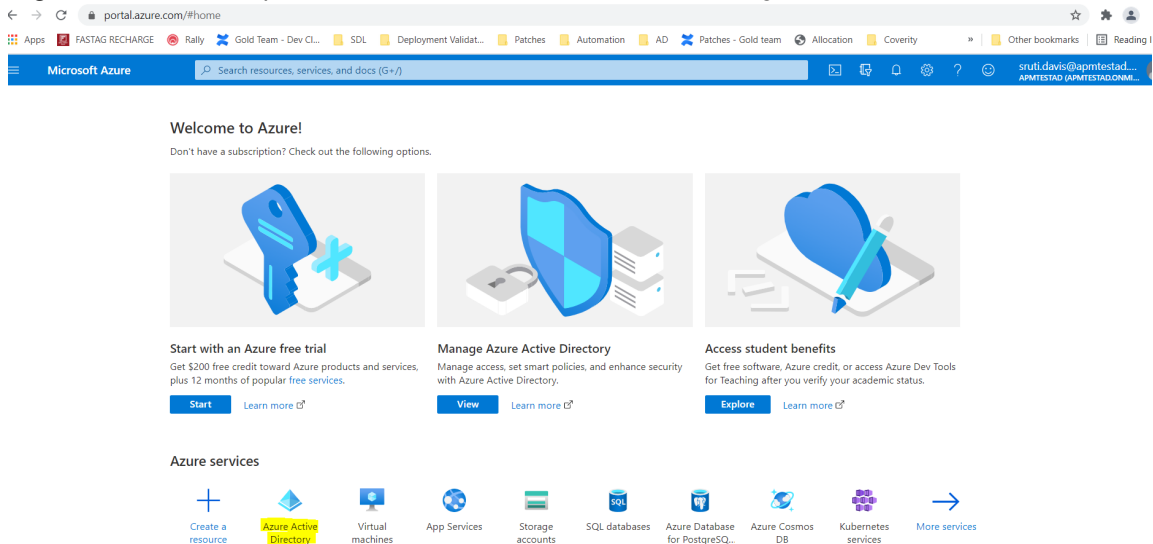
### Configure Azure Active Directory as the Identity Provider (IDP)

#### Before You Begin

You must have an Azure Active Directory (Azure AD) instance.

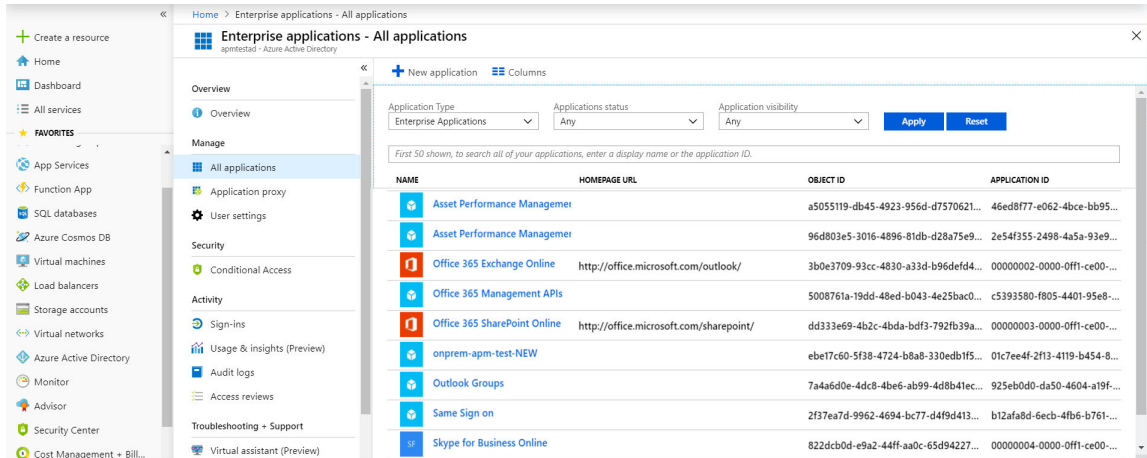
#### Procedure

1. Sign in to the Azure portal and select **Azure Active Directory**.

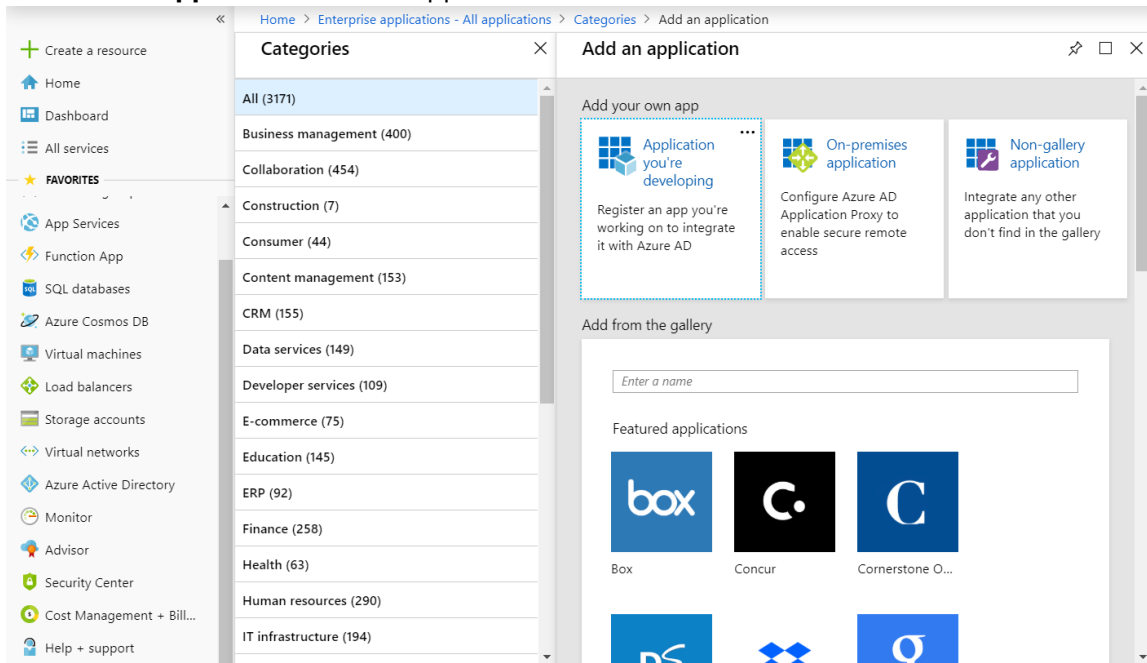


2. In the navigation pane, select **Enterprise applications**.  
The **Enterprise applications – All applications** page appears.

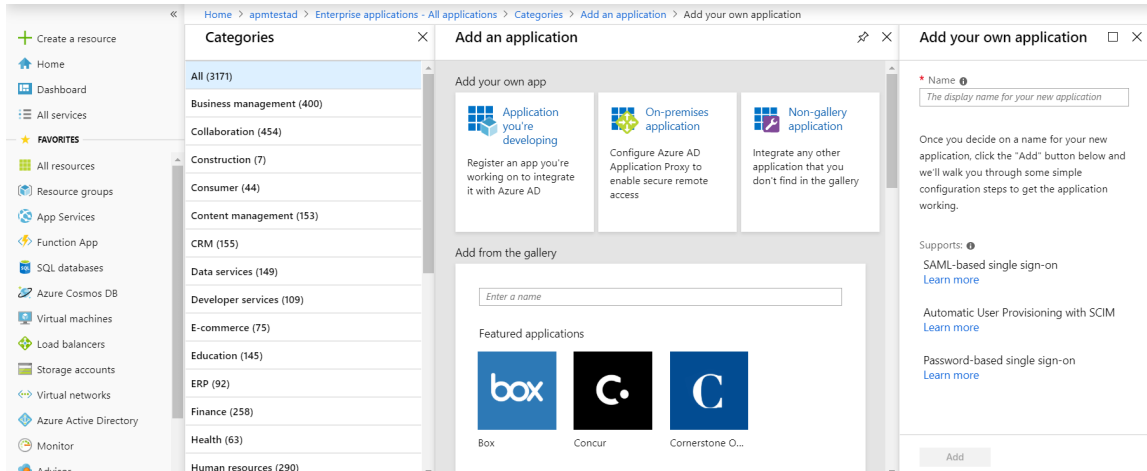




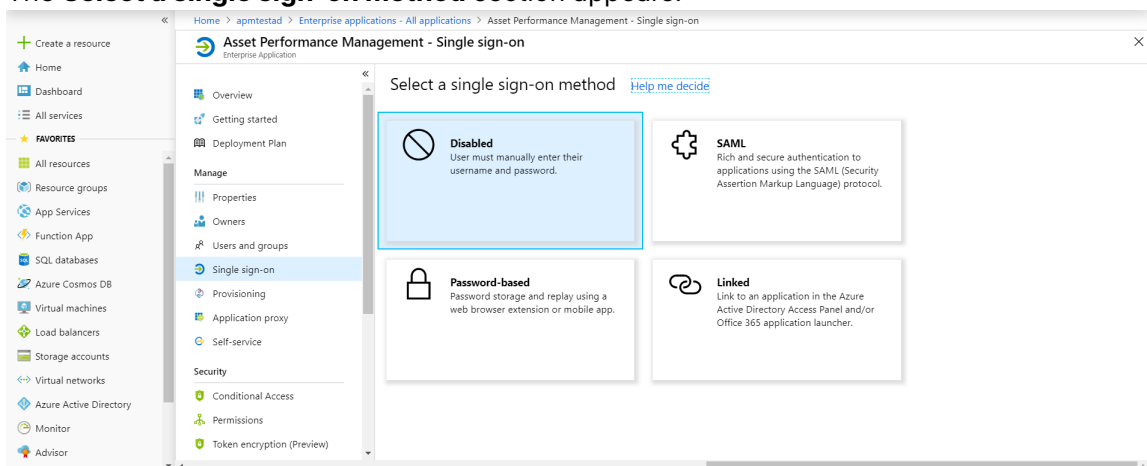
3. Select **New application**.  
The **Add an application** section appears.



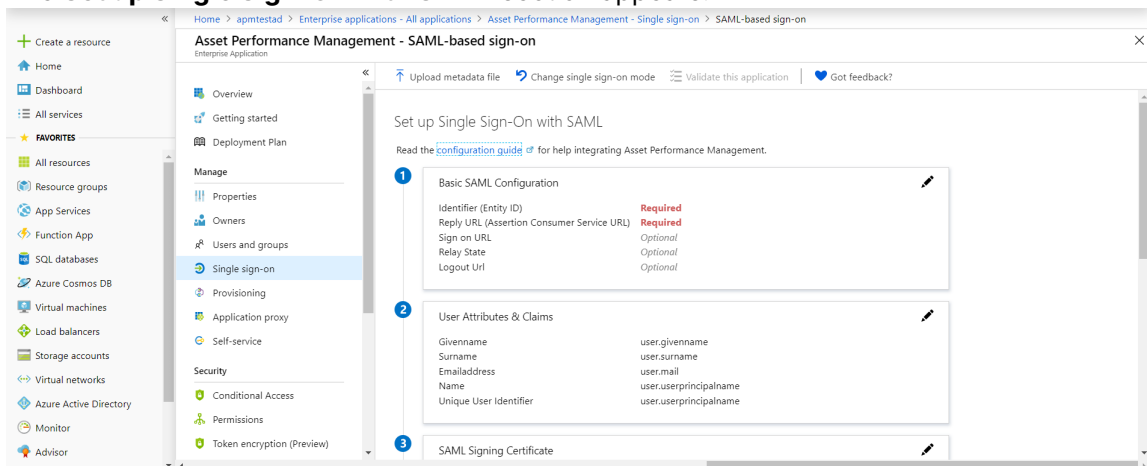
4. Select **Non-gallery application**.  
The **Add your own application** section appears.



- In the **Name** box, enter a name for the application that you want to configure with Azure AD, and then select **Add**. The page of the added application appears.
- In the navigation pane of the application page, select **Single sign-on**. The **Select a single sign-on method** section appears.



- Select **SAML**. The **Set up Single Sign-On with SAML** section appears.



- In the **Basic SAML Configuration** section, select  .

The **Basic SAML Configuration** window appears.

9. Enter the following details.

<b>Identifier (Entity ID)</b>	Enter a unique ID. <b>Note:</b> This ID will be used in the <code>saml.json</code> file for the service provider name. Therefore, note the ID.
<b>Reply URL (Assertion Consumer Service URL)</b>	The application callback URL where the response will be posted. Enter the URL in the following format: <code>https://&lt;APM Server Name&gt;/Meridium/api/v1/core/security/ssologinauth</code> , where <i>&lt;APM Server Name&gt;</i> is the name of the APM server.
<b>Sign on URL</b>	The application URL, which initiates the same sign-on. Enter the URL in the following format: <code>https://&lt;APM Server Name&gt;/meridium/index.html</code> , where <i>&lt;APM Server Name&gt;</i> is the name of the APM server.

10. Select **Save**.

11. In the **SAML Signing Certificate** section, select **Download** corresponding to Certificate (Base 64).

12. From the **Set up <Identifier>**, section copy the Login URL and Azure AD Identifier.

## Set up sdsso

You'll need to configure the application to link with Azure AD.

Login URL	<a href="https://login.microsoftonline.com/78dd76d6-f3b7...">https://login.microsoftonline.com/78dd76d6-f3b7...</a>
Azure AD Identifier	<a href="https://sts.windows.net/78dd76d6-f3b7-4b89-9ef...">https://sts.windows.net/78dd76d6-f3b7-4b89-9ef...</a>
Logout URL	<a href="https://login.microsoftonline.com/78dd76d6-f3b7...">https://login.microsoftonline.com/78dd76d6-f3b7...</a>

**Note:** The Login URL and Azure AD Identifier will be used in the `saml.json` file for `SingleSignOnServiceURL` and `PartnerIdentityProviderConfigurations Name`, respectively.

13. In the application server, copy the downloaded Certificate (Base 64) to `C:\Program Files\Meridium\ApplicationServer\api` and install it. Please refer to section [Install the Token Signing idp.cer Certificate on the Application Server](#) on page 42, steps 5 - 8 for installing the certificate.

14. Modify the `saml.json` file found in `C:\Program Files\Meridium\ApplicationServer\api` as follows:

- `LocalServiceProviderConfiguration Name` with the value that you entered and noted for the **Identifier (Entity ID)** box.
- `PartnerIdentityProviderConfigurations Name` with the Azure AD Identifier.
- `SingleSignOnServiceURL` with the Login URL.
- `AssertionConsumerServiceUrl` with the URL that you entered in the **Reply URL (Assertion Consumer Service URL)** box.
- `PartnerCertificates FileName` with the downloaded certificate name.

```
{
  "SAML": {
    "$schema": "https://www.componentspace.com/schemas/saml-config-schema-v1.0.json",
    "Configurations": [
      {
        "LocalServiceProviderConfiguration": {
          "Name": "sdsso",
          "AssertionConsumerServiceUrl": "https://<APM Server Name>/Meridium/api/v1/core/security/ssologinauth",
          "LocalCertificates": [
            {
              "FileName": "sp.pfx",
              "Password": "password"
            }
          ]
        },
        "PartnerIdentityProviderConfigurations": [
          {
            "Name": "https://sts.windows.net/78dd76d6-f3b7-4b89-9efc-ef8d5483b7ea/",
            "Description": "Azure AD",
            "SignAuthnRequest": true,
            "WantSamlResponseSigned": false,
            "WantAssertionSigned": true,

```

```
        "WantAssertionEncrypted": false,
        "UseEmbeddedCertificate": false,
        "SingleSignOnServiceUrl": "https://
login.microsoftonline.com/78dd76d6-f3b7-4b89-9efc-ef8d5483b7ea/
saml2",
        "DigestAlgorithm": "http://www.w3.org/2001/04/
xmlenc#sha256",
        "SignatureAlgorithm": "http://www.w3.org/2001/04/xmldsig-
more#rsa-sha256",
        "PartnerCertificates":
        [
        {
            "FileName": "sdsso.cer"
        }
        ]
    }
}
]
```

15. Add users to the enterprise application by accessing the **Users and groups** section.

- a) Select Users and groups section in the left navigation pane.
- b) Click on Add user/group button to add a new user to this enterprise application. Search for the user in the Users list and then click on Assign.

Users are added to the enterprise application.

#### Next Steps

- [Enable SSO](#)

## Configure Identity Provider (IDP) on Active Directory

### About Configuring Identity Provider (IDP) on Active Directory

#### About This Task

You must configure IDP on Active Directory using the Active Directory Federation System (AD FS) Management Console.

**Note:** The strings and the URLs in AD FS are case-sensitive.

To configure IDP on Active Directory, you must perform the following tasks:

#### Procedure

1. [Add Relying Party Trusts](#) on page 10
2. [Add Claim Rules](#) on page 21
3. [Add Certificates](#) on page 27
4. [Federation Service Identifier from ADFS](#) on page 44

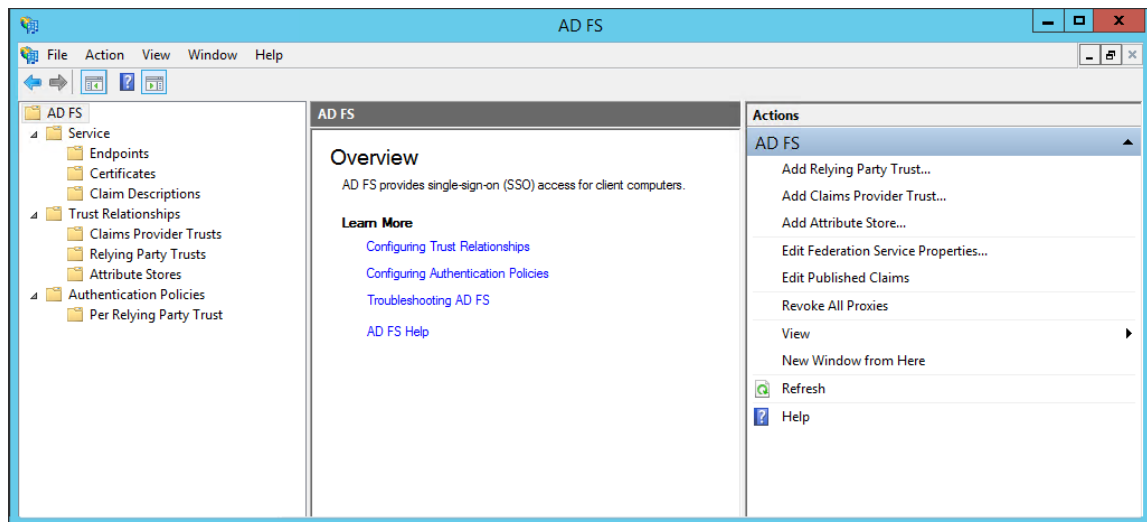
# Add Relying Party Trusts

## Before You Begin

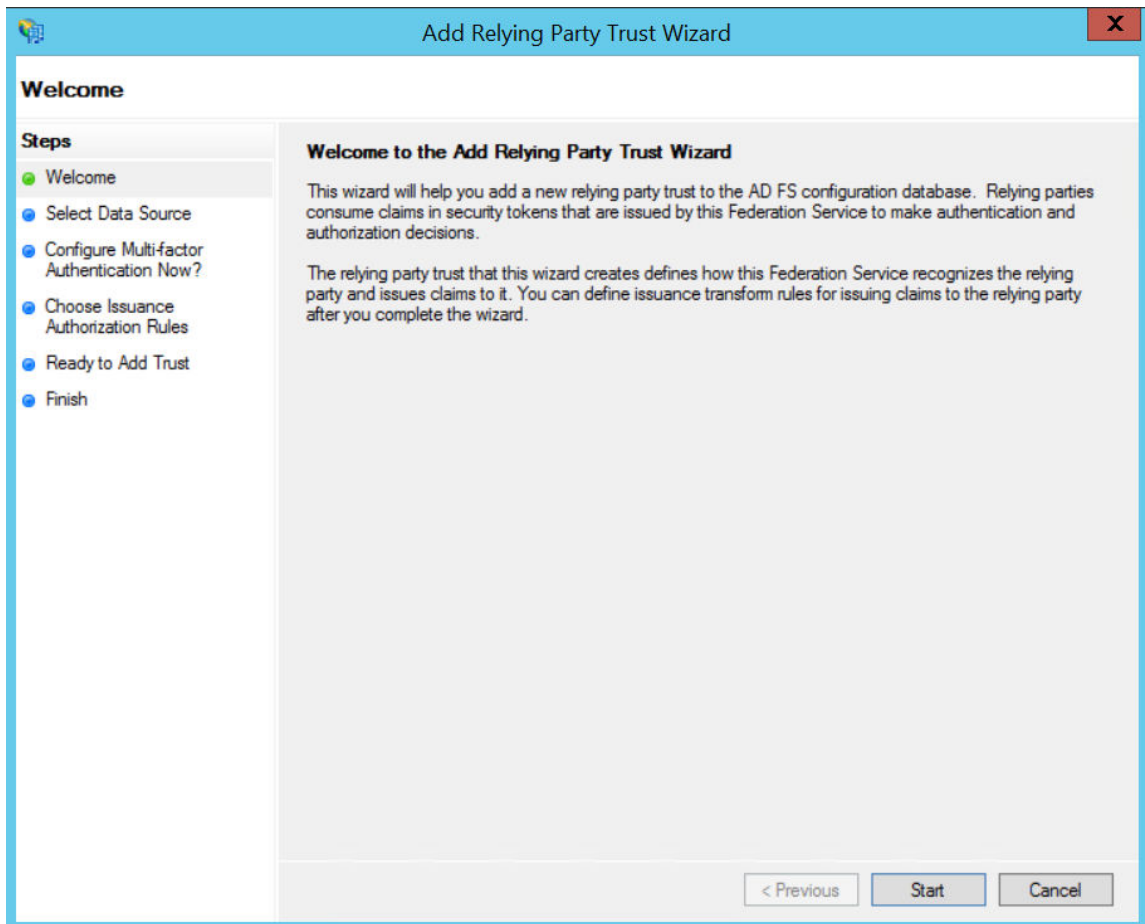
- You must have administrative privileges to configure AD FS.
- Ensure that the /adfs/ls endpoint exists for SAML v2.0.
  - Note:** To add adfs/ls endpoint, refer to the AD FS documentation.
- Ensure that the token encrypting certificates exist.

## Procedure

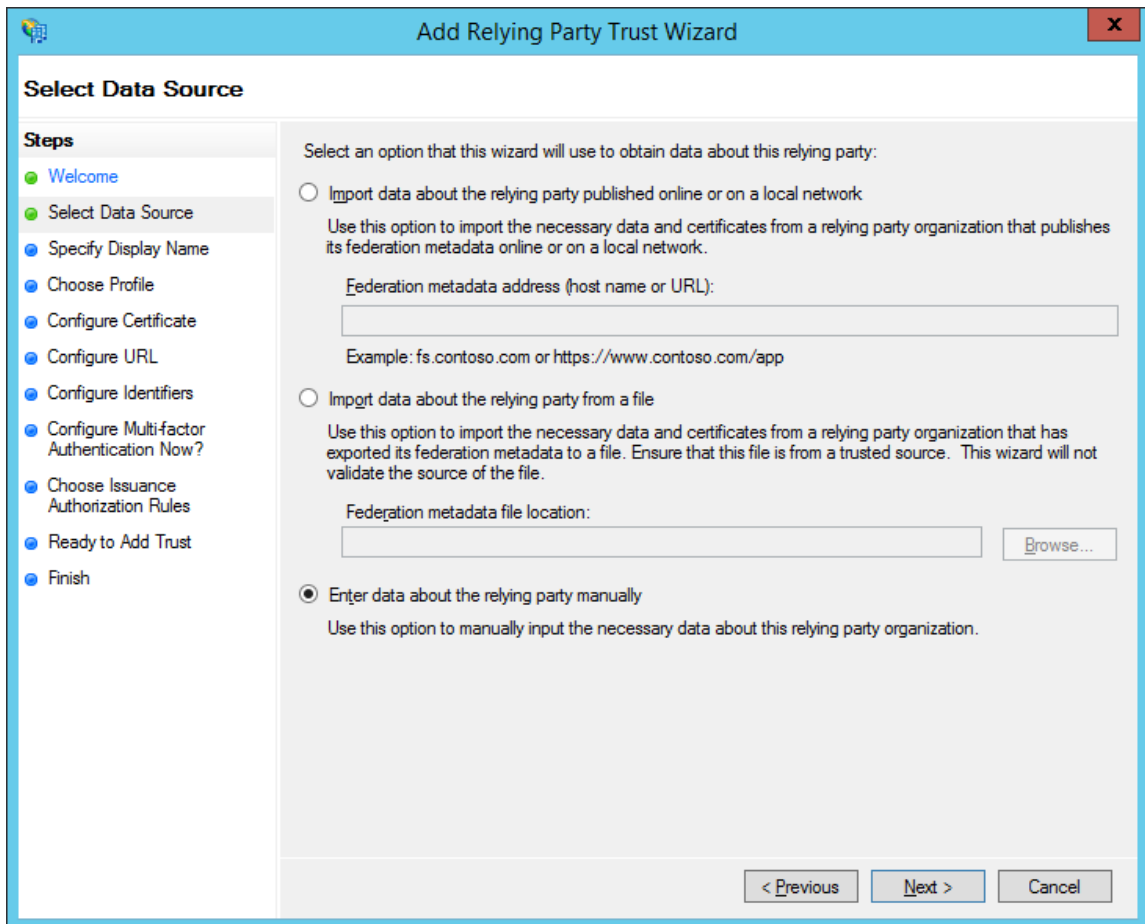
1. Access **Control Panel**, then select **System and Security**, and then select **Administrative Tools**.
2. Select **AD FS Management**.  
The **AD FS** window appears.



3. In the **Actions** section, select **Add Relying Party Trust**.  
The **Add Relying Party Trust Wizard** appears.

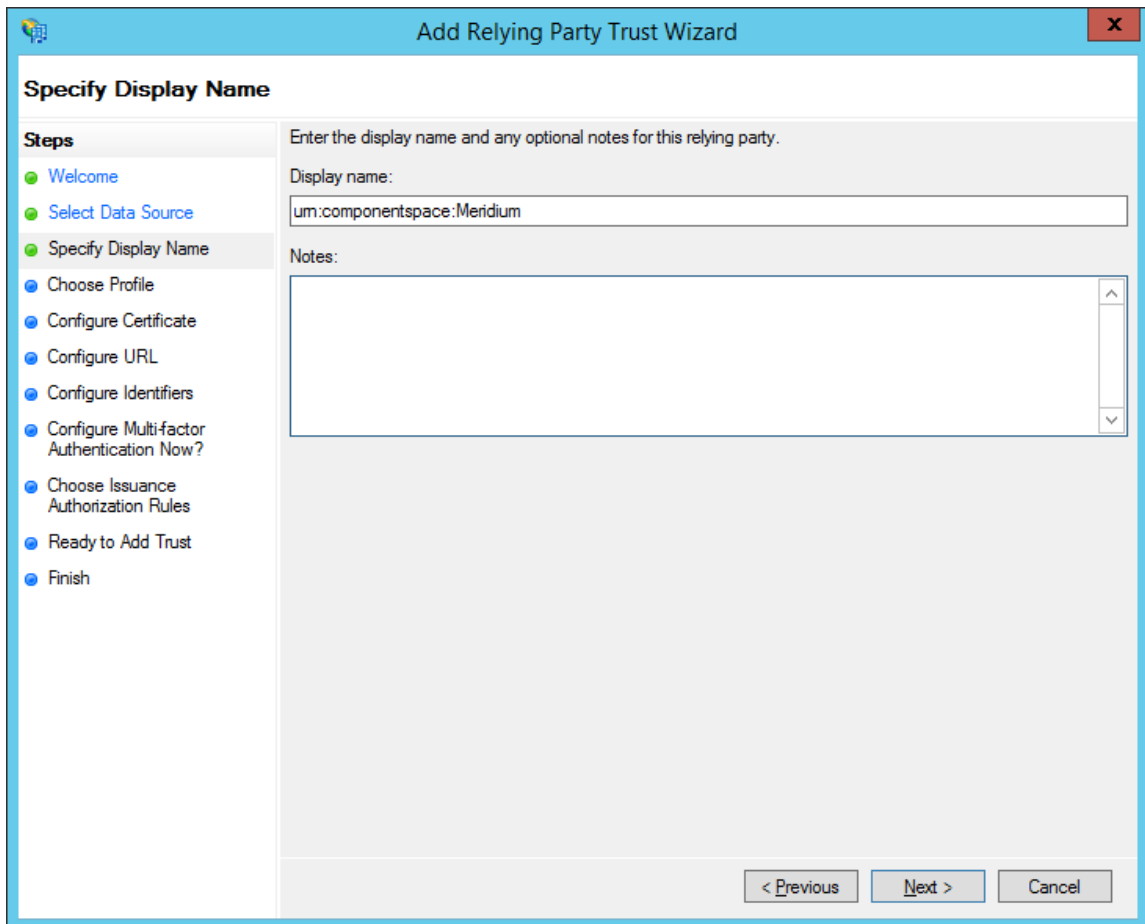


4. Select **Start**.  
The **Select Data Source** page appears.

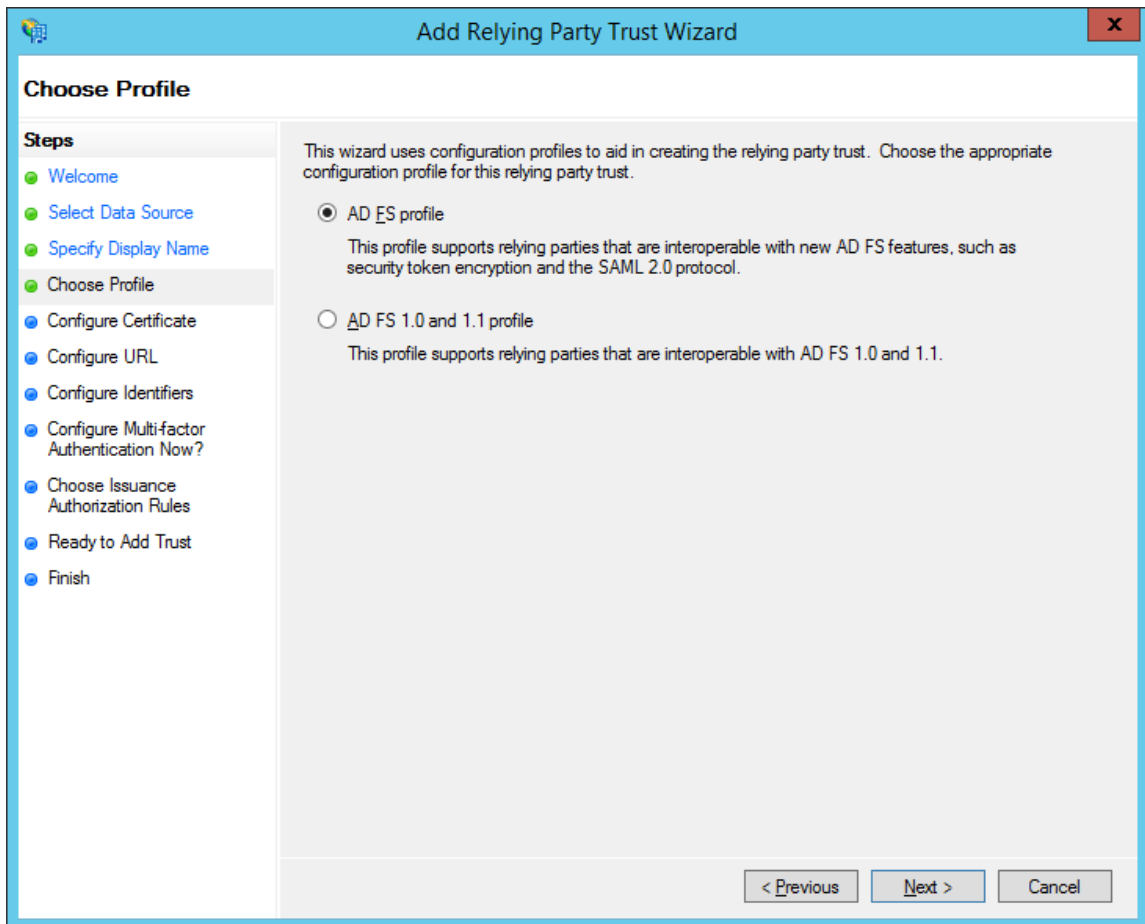


5. Select **Enter data about relying party manually**, and then select **Next**. The **Specify Display Name** page appears.

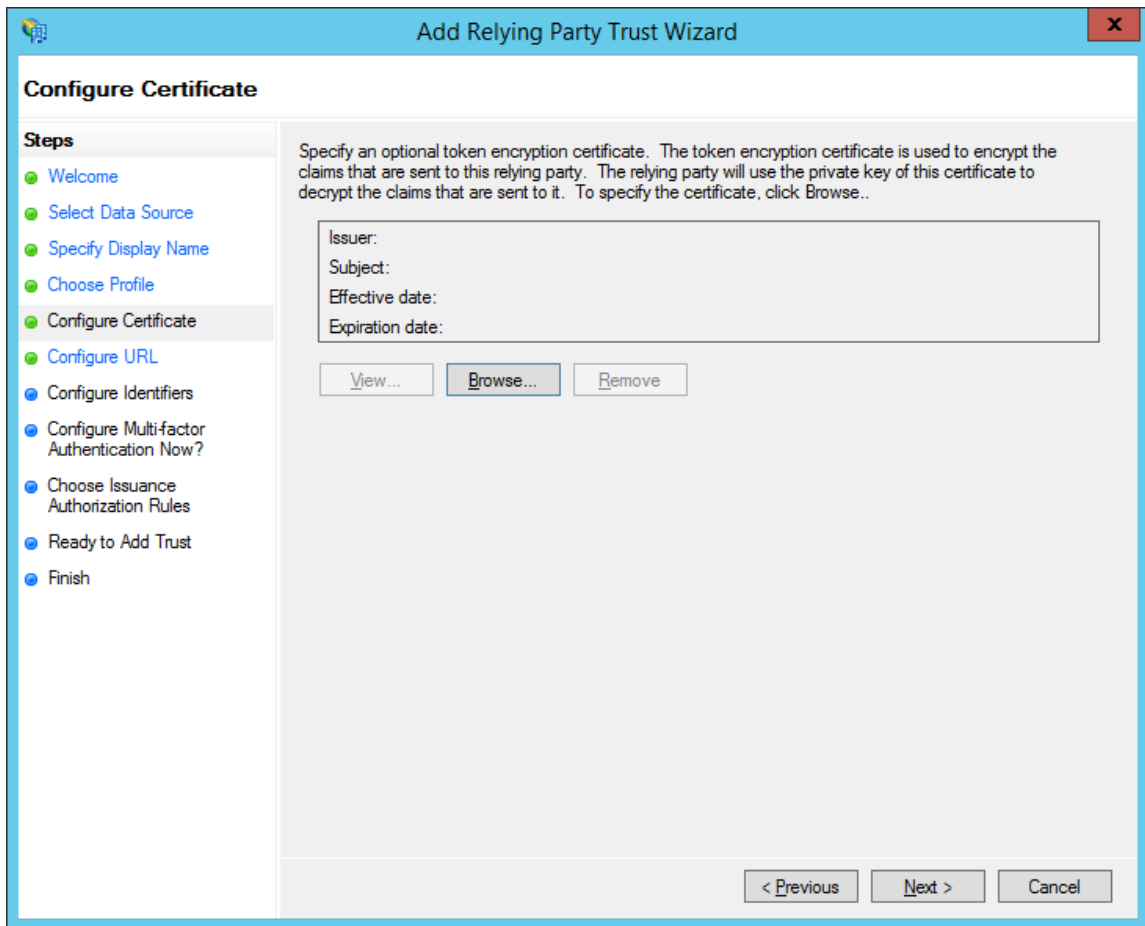




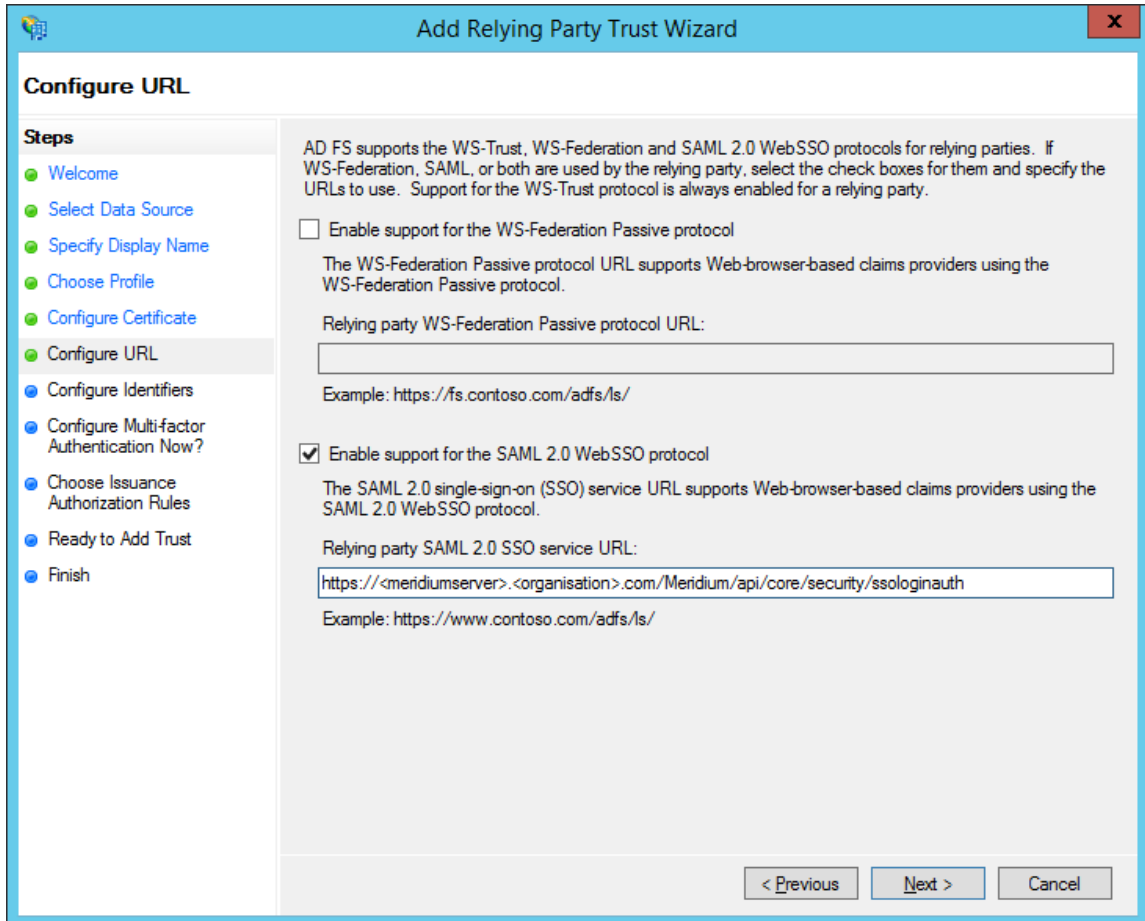
6. In the **Display name** box, enter **urn:componentspace:Meridium**, and then select **Next**. The **Choose Profile** page appears.



7. Select the **AD FS profile** option, and then select **Next**. The **Configure Certificate** page appears.



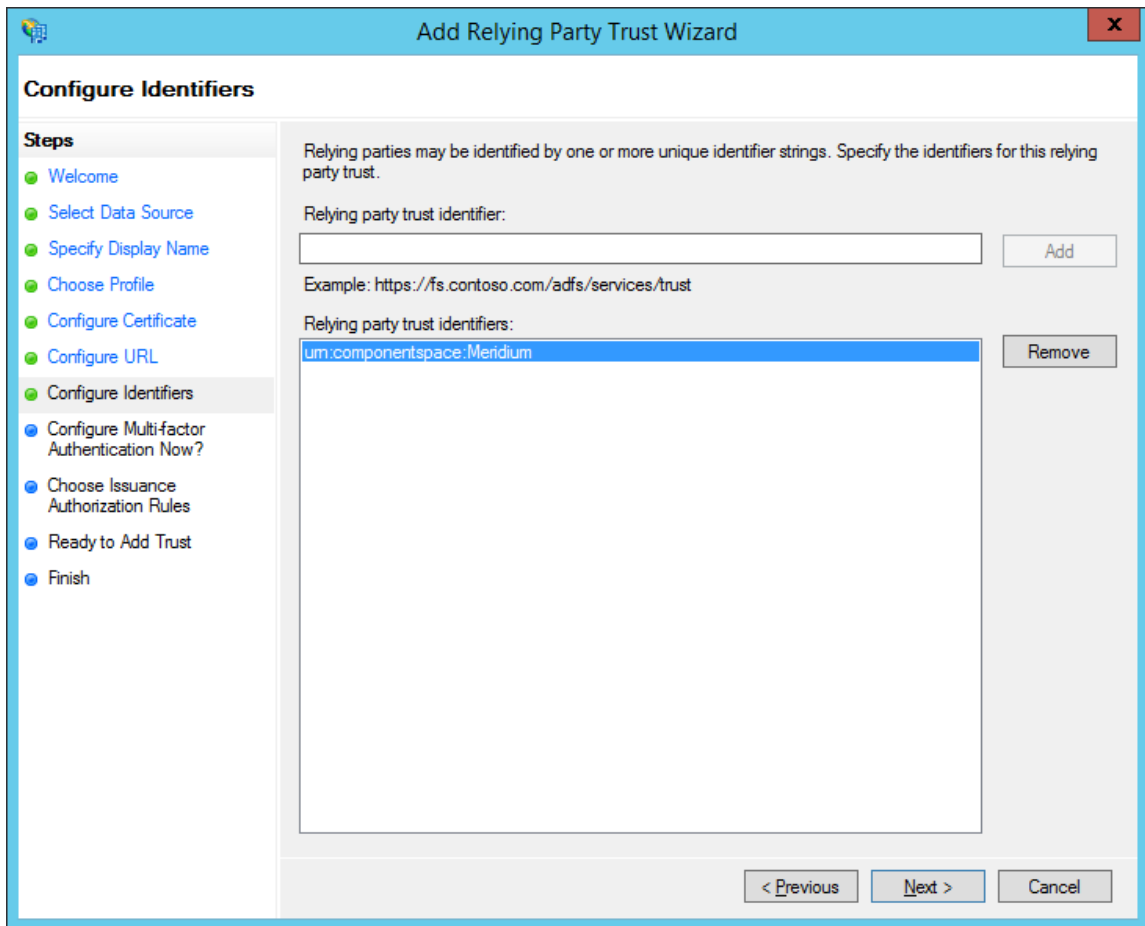
8. Select **Next**.  
The **Configure URL** page appears.



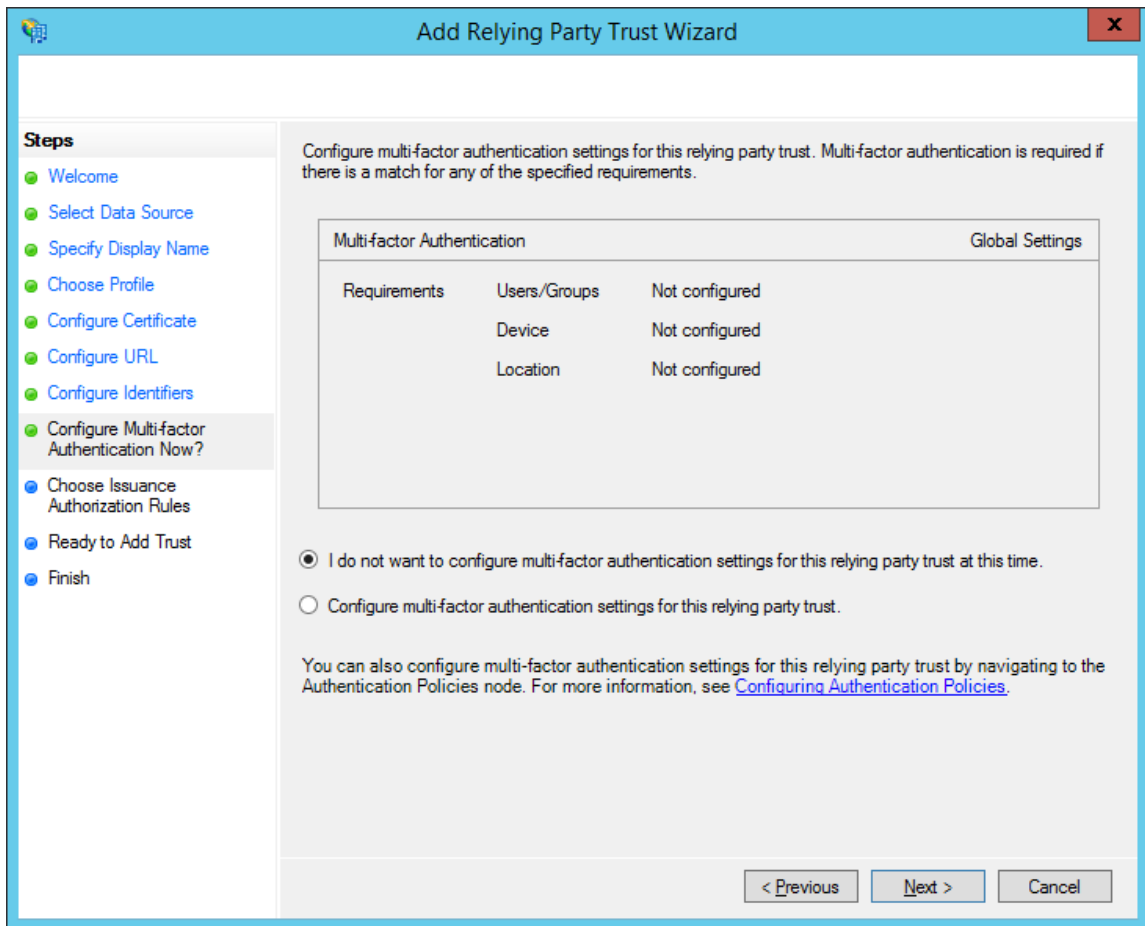
9. Select the **Enable Support for the SAML 2.0 WebSSO protocol** check box.
10. In the **Relying Party SAML 2.0 SSO service URL** box, enter `https://<APM Server Name>/Meridium/api/v1/core/security/ssologinauth`, and then select **Next**.

**Note:** The word Meridium is case-sensitive. Therefore, ensure that the first letter of the word is capitalized. Also, the URL must be same as the AssertionConsumerServiceUrl in the `saml.json` file.

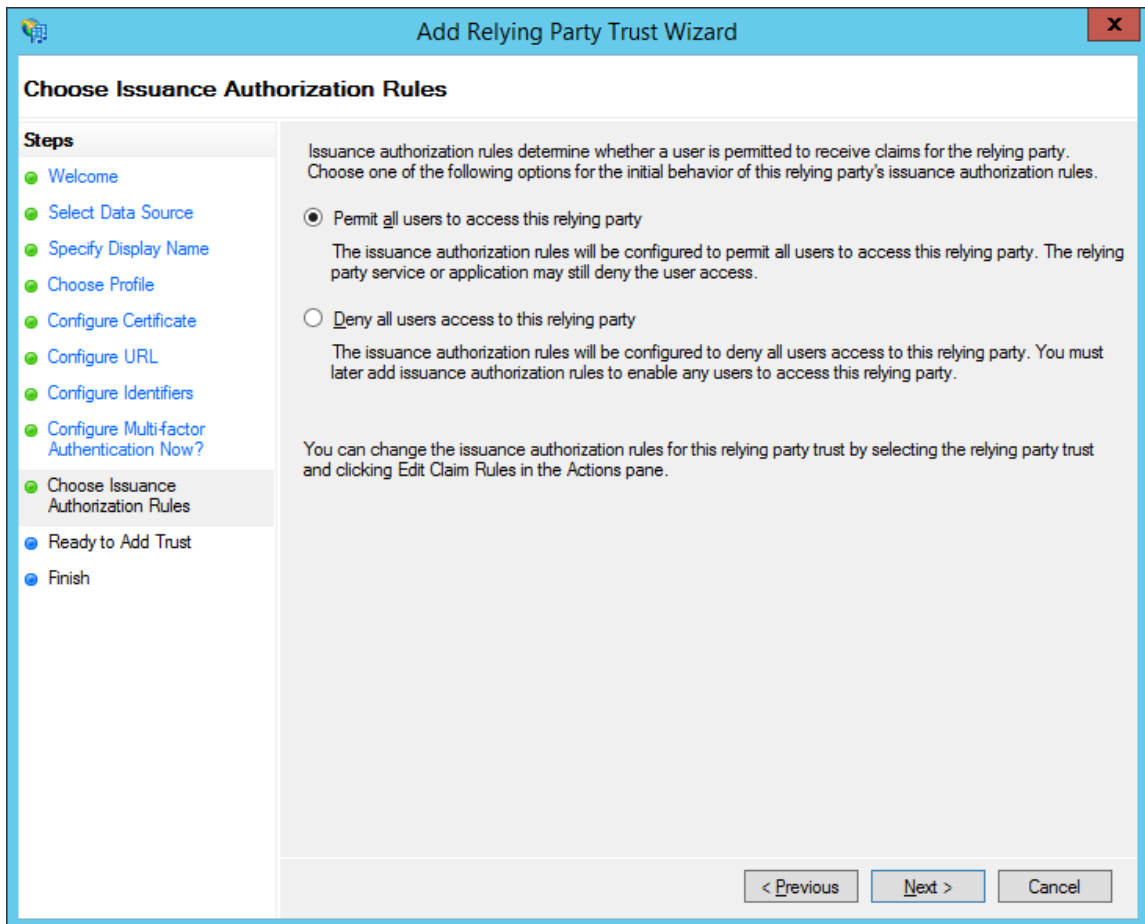
The **Configure Identifiers** page appears.



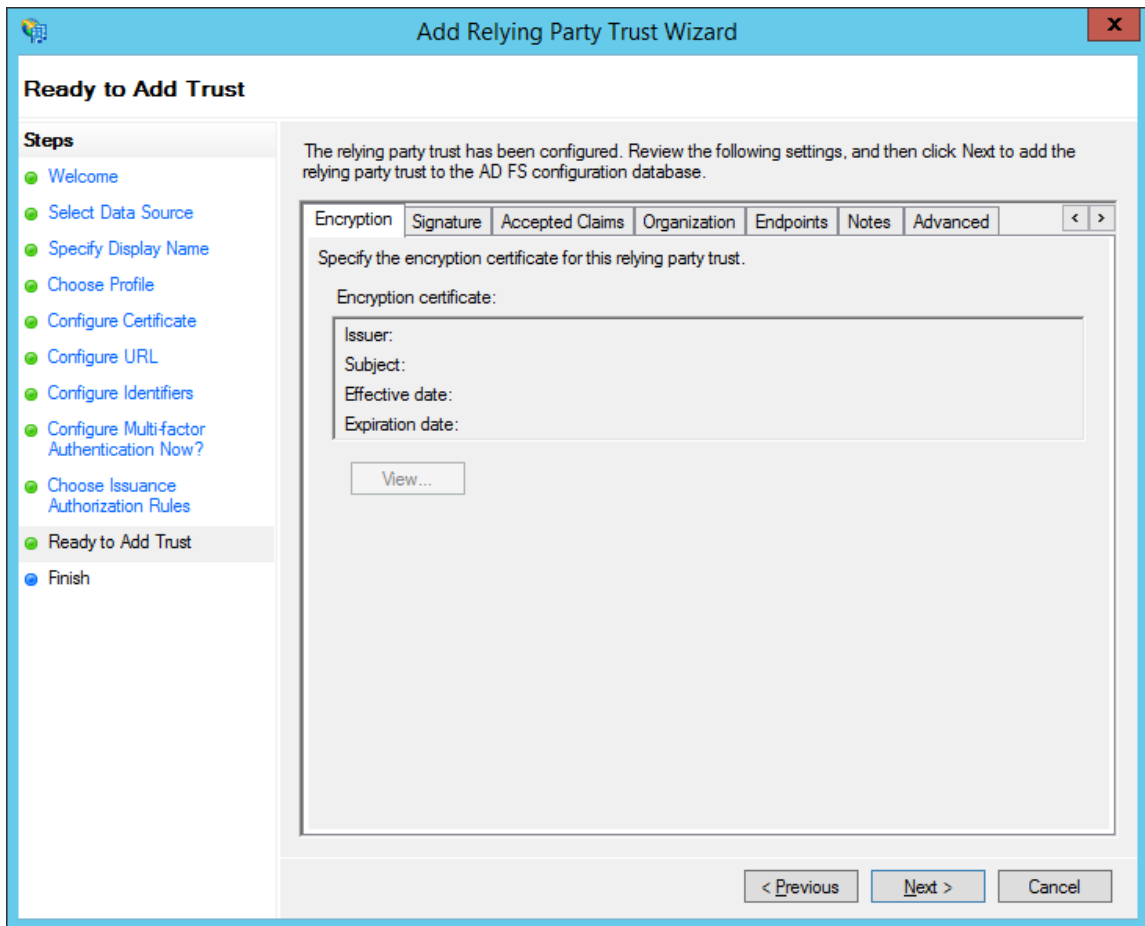
11. In the **Relying party trust identifier** box, enter `urn:componentspace:Meridium`, then select **Add**, and then select **Next**.  
The **Configure Multi-factor Authentication Now** page appears.



12. Select **I do not want to configure multi-factor authentication settings for this relying party trust at this time**, and then select **Next**.  
The **Choose Issuance Authorization Rules** page appears.

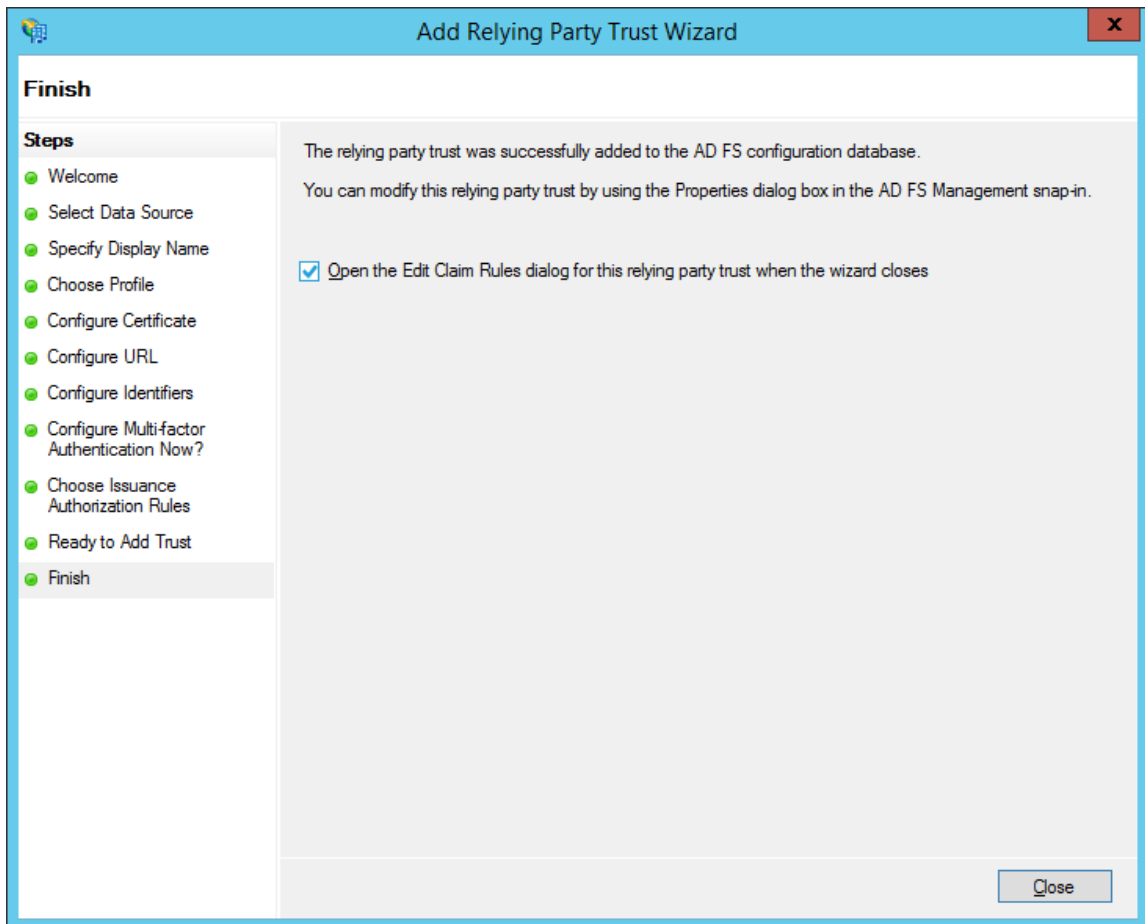


13. Select **Permit all users to access this relying party**, and then select **Next**. The **Ready to Add Trust** page appears.



14. Select **Next**.  
The **Finish** page appears.





15. Clear the **Open the Edit Claim Rules dialog for this relying party trust when the wizard closes** check box, and then select **Close**.

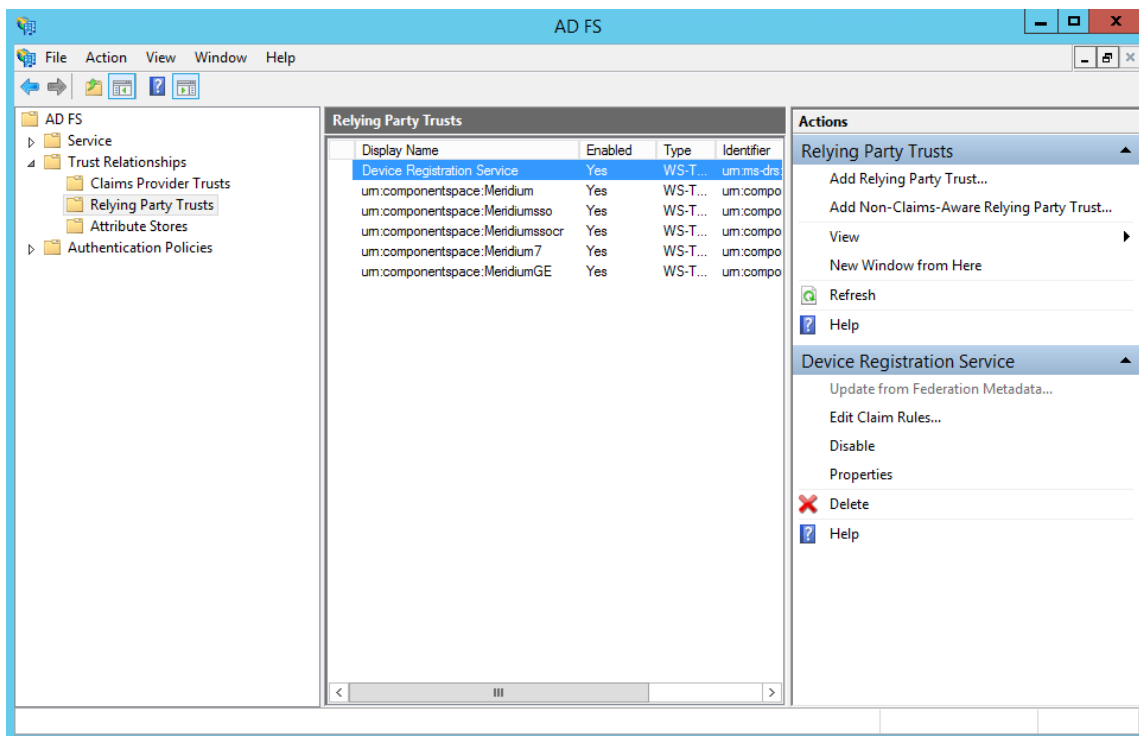
#### Next Steps

- [Add Claim Rules](#) on page 21

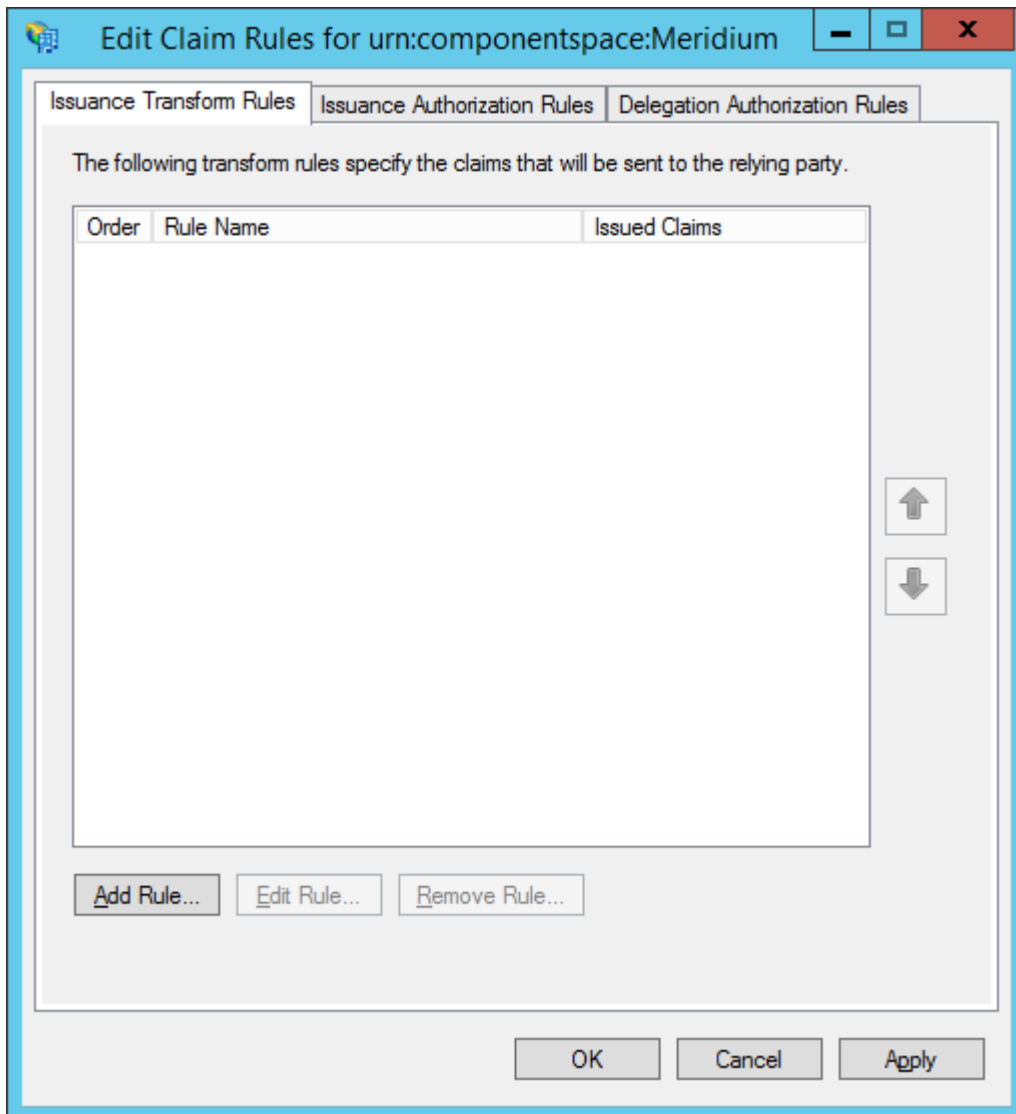
## Add Claim Rules

#### Procedure

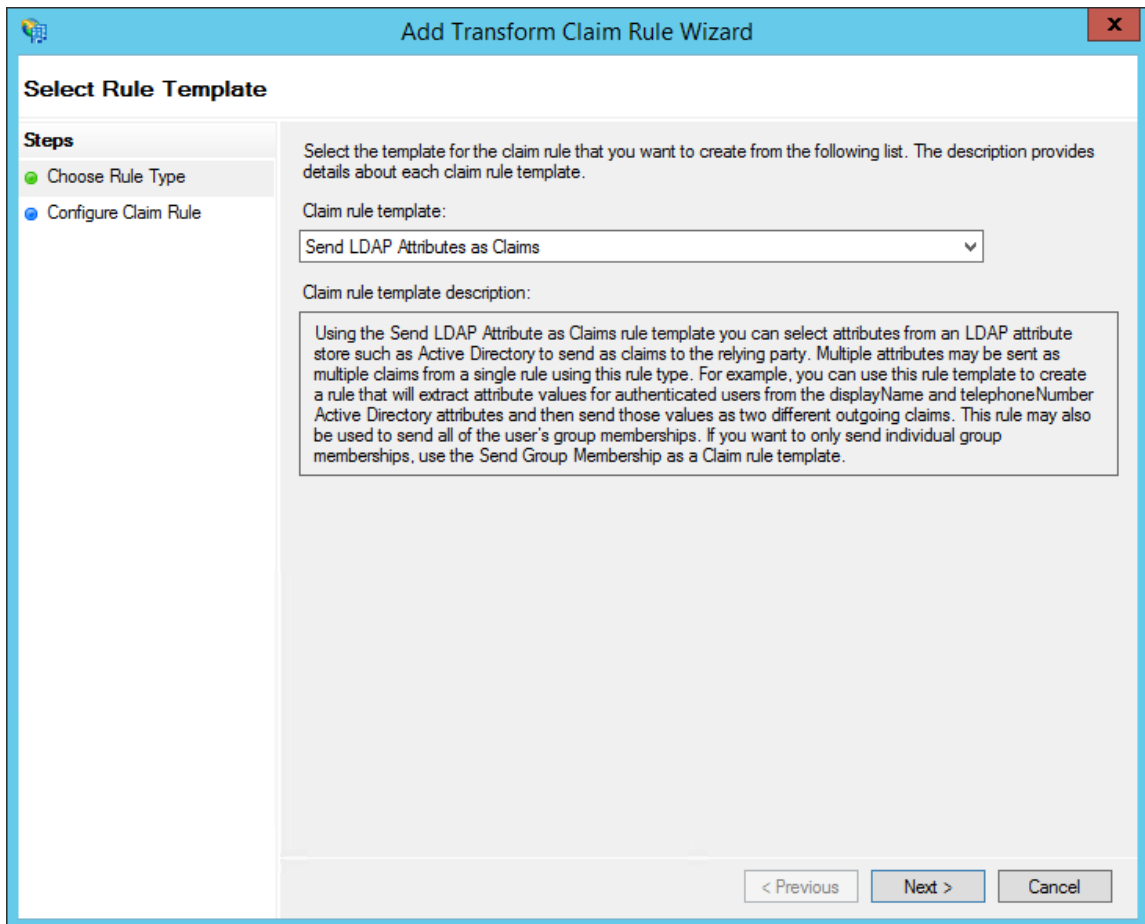
1. In the **AD FS** window, expand the **Trust Relationships** folder, and then select **Relying Party Trusts**.  
The **Relying Party Trusts** page appears.



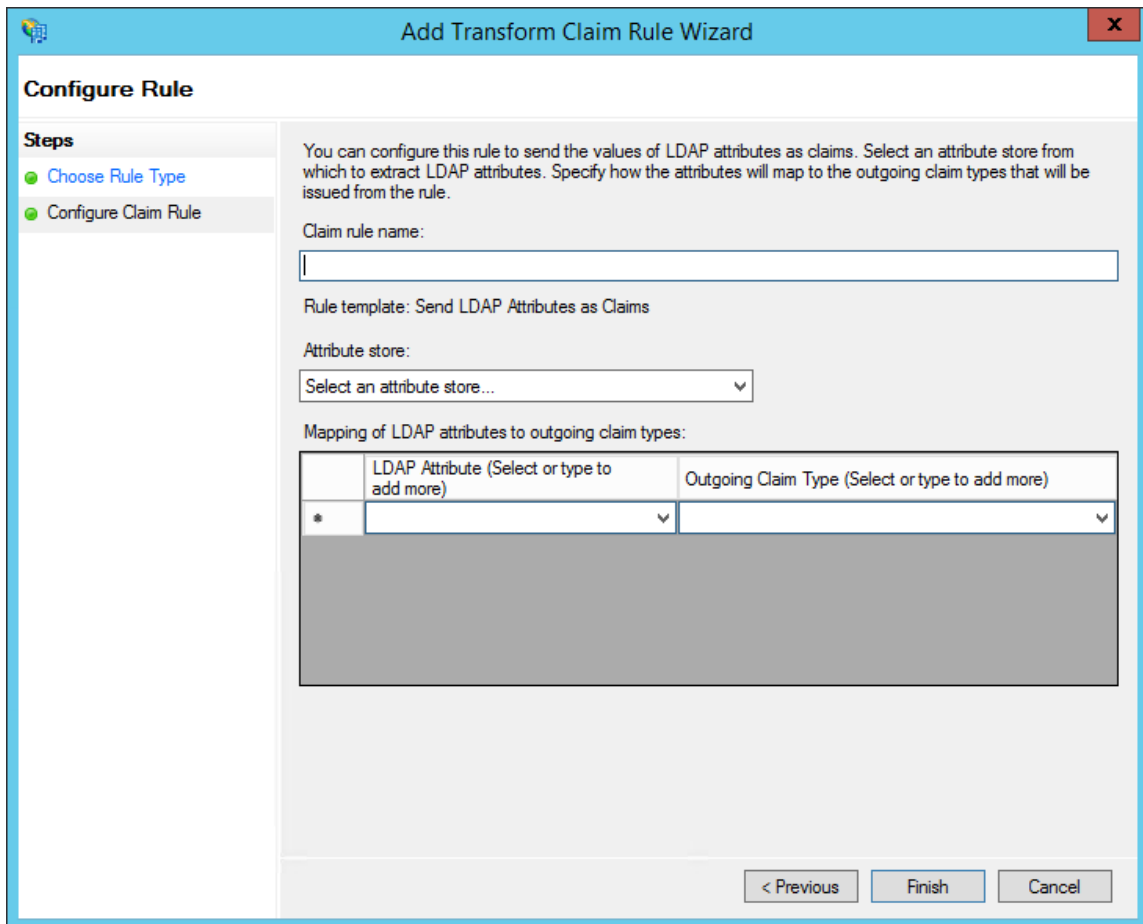
2. Select **urn:componentspace:Meridium**, and then, in the **Actions** section, select **Edit Claim Rules**.  
The **Edit Claim Rules for urn:componentspace:Meridium** window appears. Select **Issuance Transform Rules** tab.



3. Select **Add Rule**.  
The **Add Transform Claim Rule Wizard** window appears.

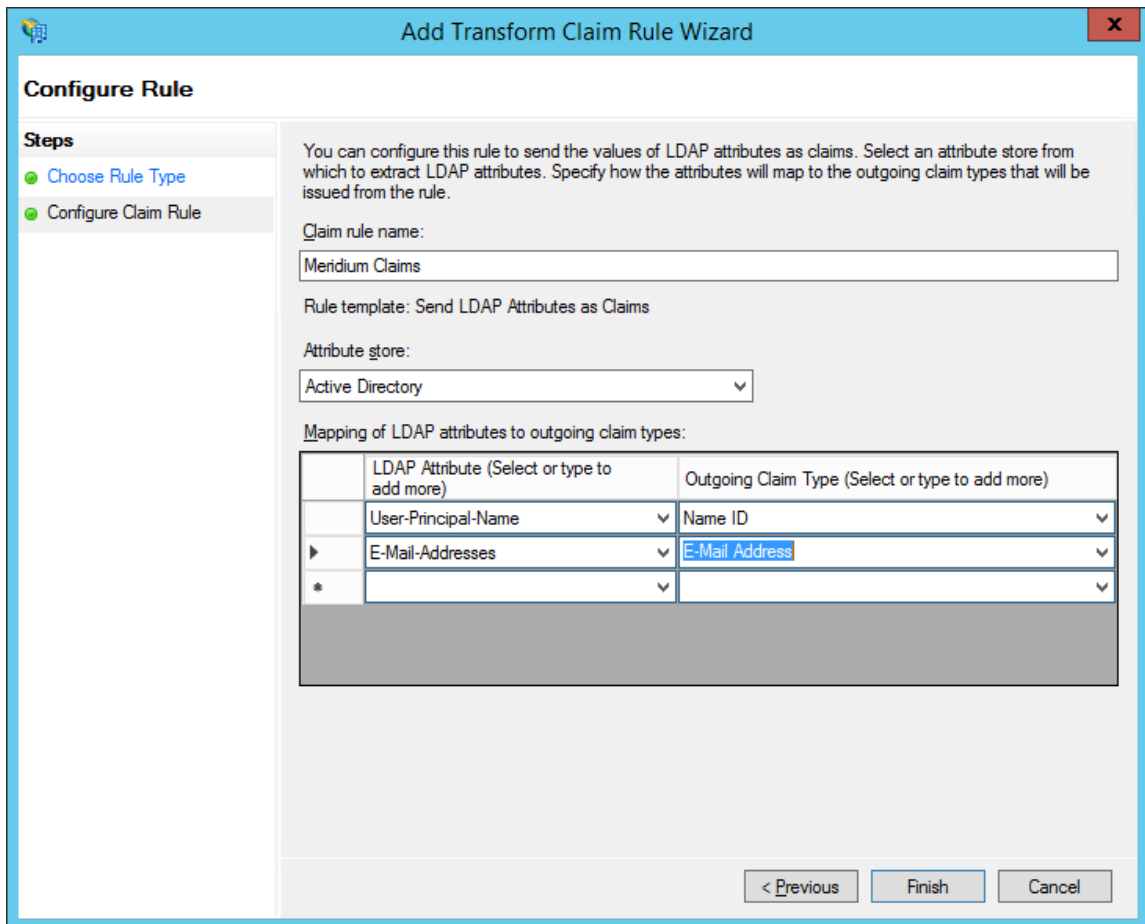


4. In the **Claim rule template** drop-down list box, select **Send LDAP Attributes as Claims**, and then select **Next**.  
The **Configure Rule** page appears.

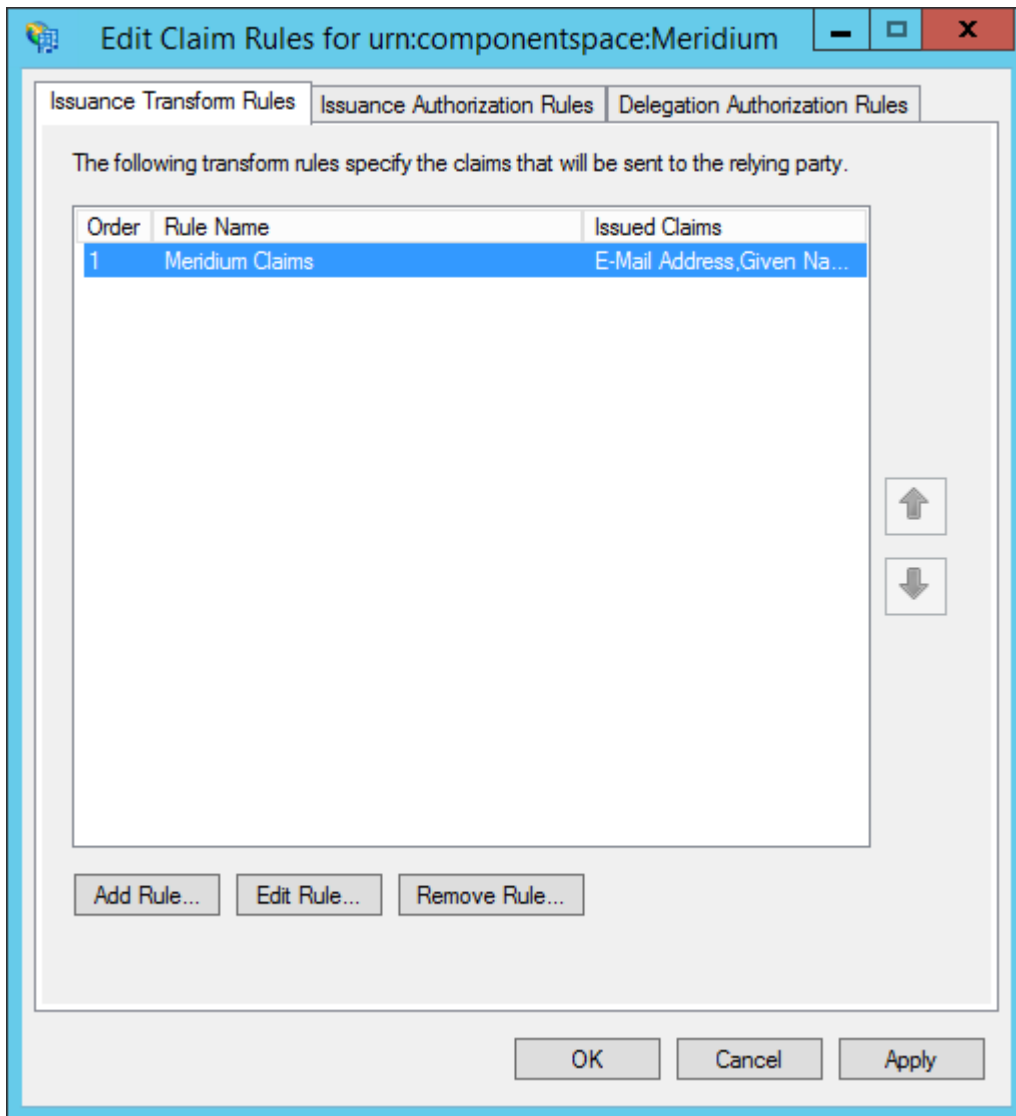


5. In the **Claim rule name** box, enter **Meridium Claims**, and then, in the **Attribute store** drop-down list box, select **Active Directory**.
6. Perform the following steps:
  - In the first drop-down list box in the **LDAP Attribute** column, select **User-Principal-Name**, and then, in the corresponding **Outgoing Claim Type** drop-down list box, select **Name ID**.
  - In the second drop-down list box in the **LDAP Attribute** column, select **E-mail-Addresses**, and then, in the corresponding **Outgoing Claim Type** drop-down list box, select **E-Mail Address**.

The **Configure Rule** page is populated with the selected values.



7. Select **Finish**.  
The **Edit Claim Rules for urn:componentSpace:Meridium** window appears.



8. Select **OK**.  
The claim rule is added to the **Edit Claim Rules for urn:componentspace:Meridium** window.

#### Next Steps

- [Add Certificates](#) on page 27

## Add Certificates

### About This Task

To add certificates, you must perform the following tasks:

### Procedure

1. [Install the Service Provider certificate \(sp.pfx\)](#) on page 28
2. [Export the Public Key Certificate](#) on page 32

3. [Copy the Certificate to Active Directory](#) on page 39
4. [Install the Token Signing idp.cer Certificate on the Application Server](#) on page 42

### Install the Service Provider certificate (sp.pfx)

#### Procedure

1. Navigate to C:\Program Files\Meridium\ApplicationServer\api, where the public key certificate file (sp.pfx) is located.

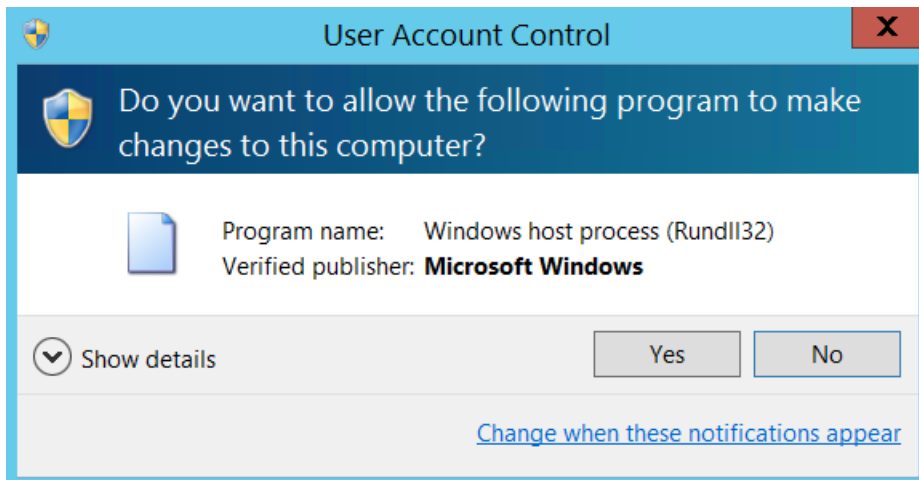
**Note:** APM provides the public key certificate file (sp.pfx). pfx is personal information exchange.

2. Right-click **sp**, and then select **Install PFX**.  
The **Certificate Import Wizard** appears.

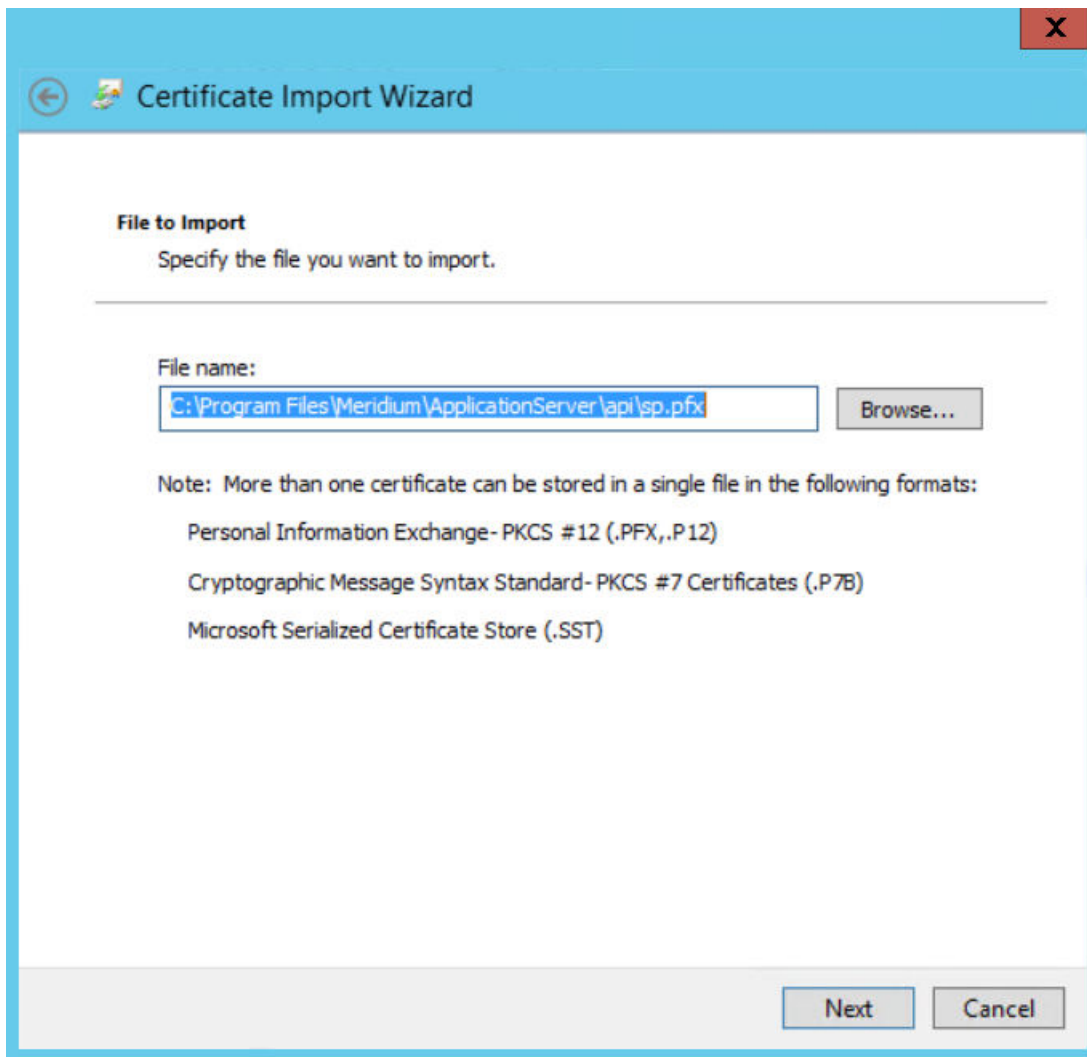


3. Select **Local Machine**, and then select **Next**.  
The **User Account Control** window appears.

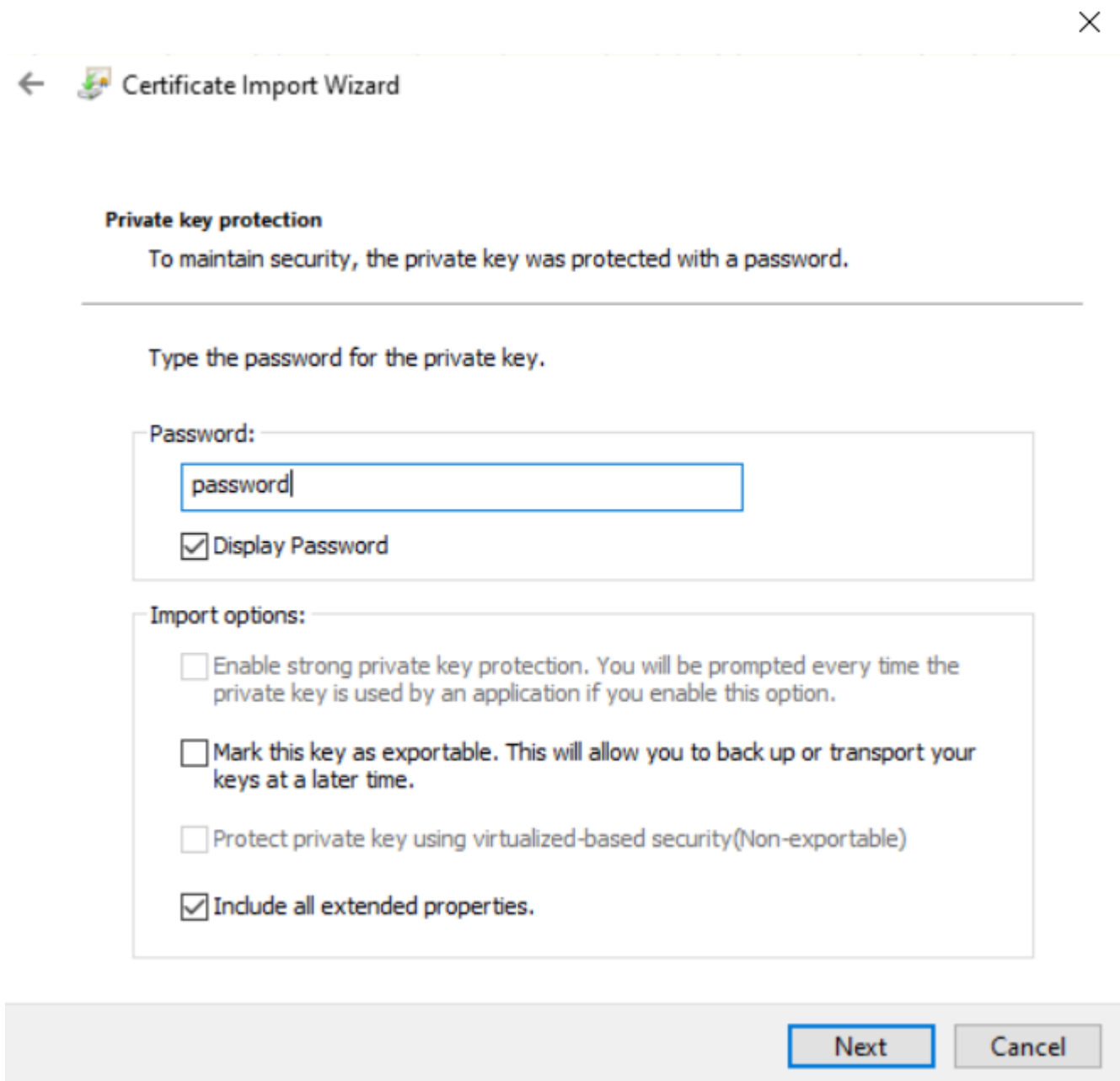




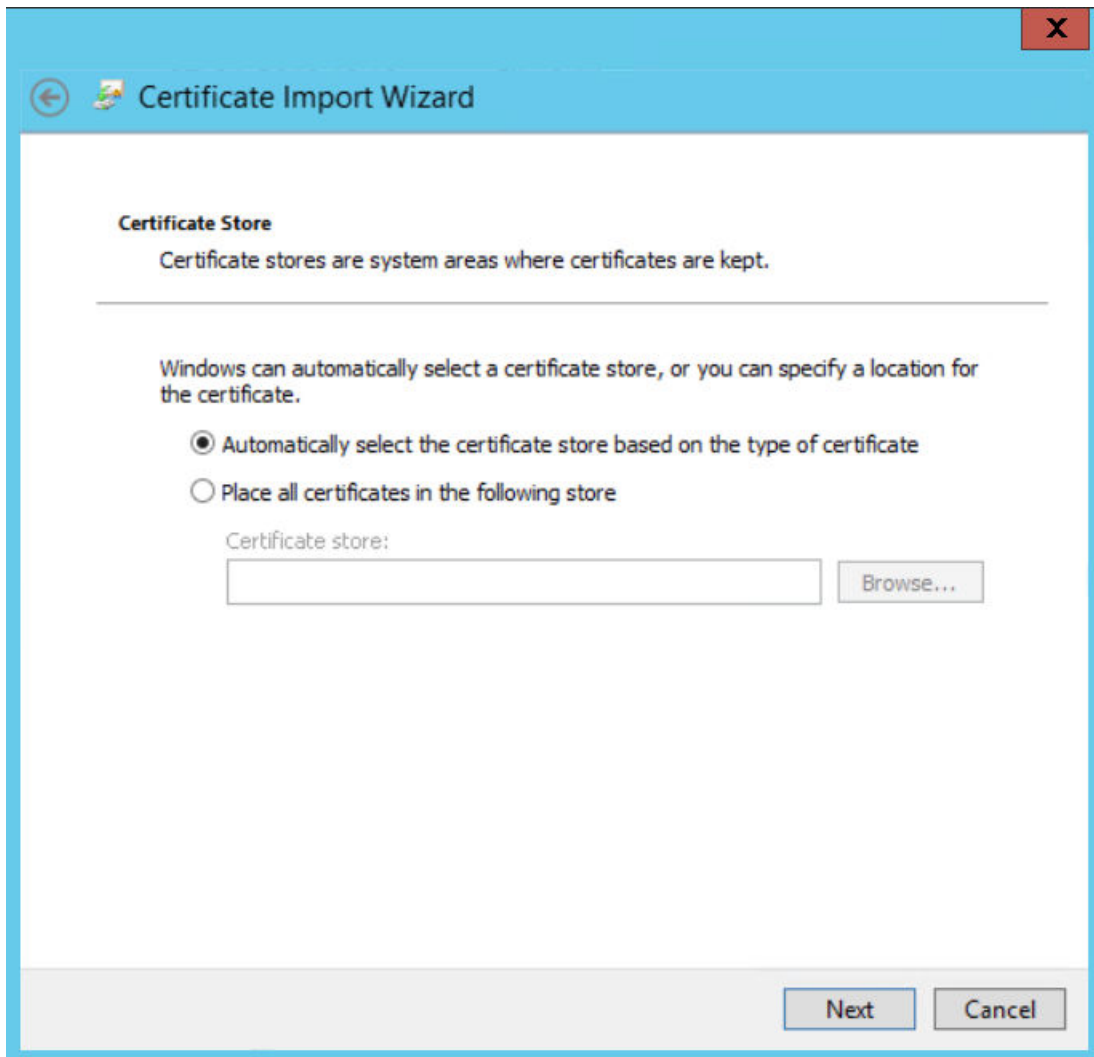
4. Select **Yes**.  
The **Certificate Import Wizard** appears, and the **File Name** box displays the file path where the certificate is located.



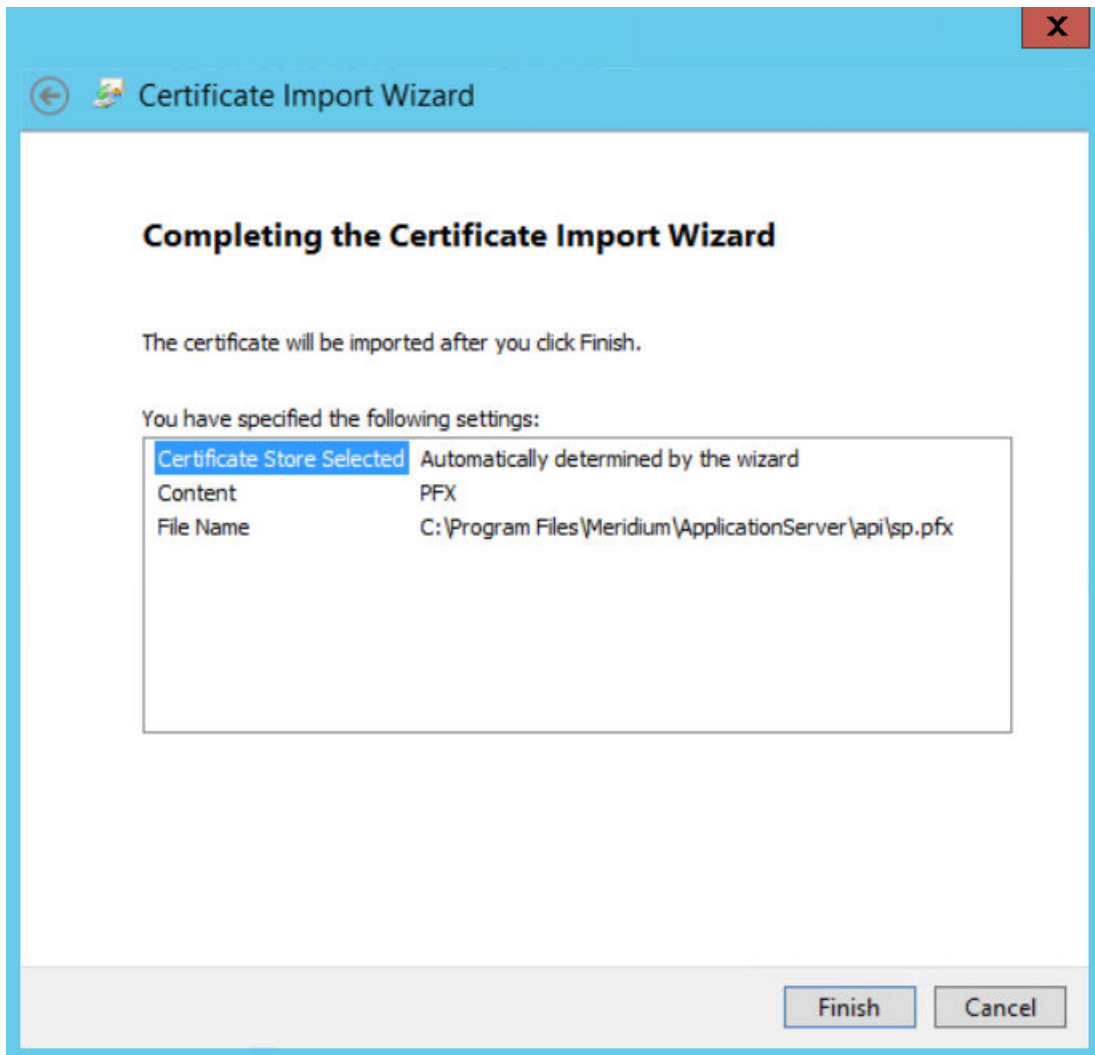
5. Select **Next**.



6. Enter a password `password`, and then select **Next**.



7. Select **Automatically select the certificate store based on the type of certificate**. The **Completing the Certificate Import Wizard** appears.



8. Select **Finish**.

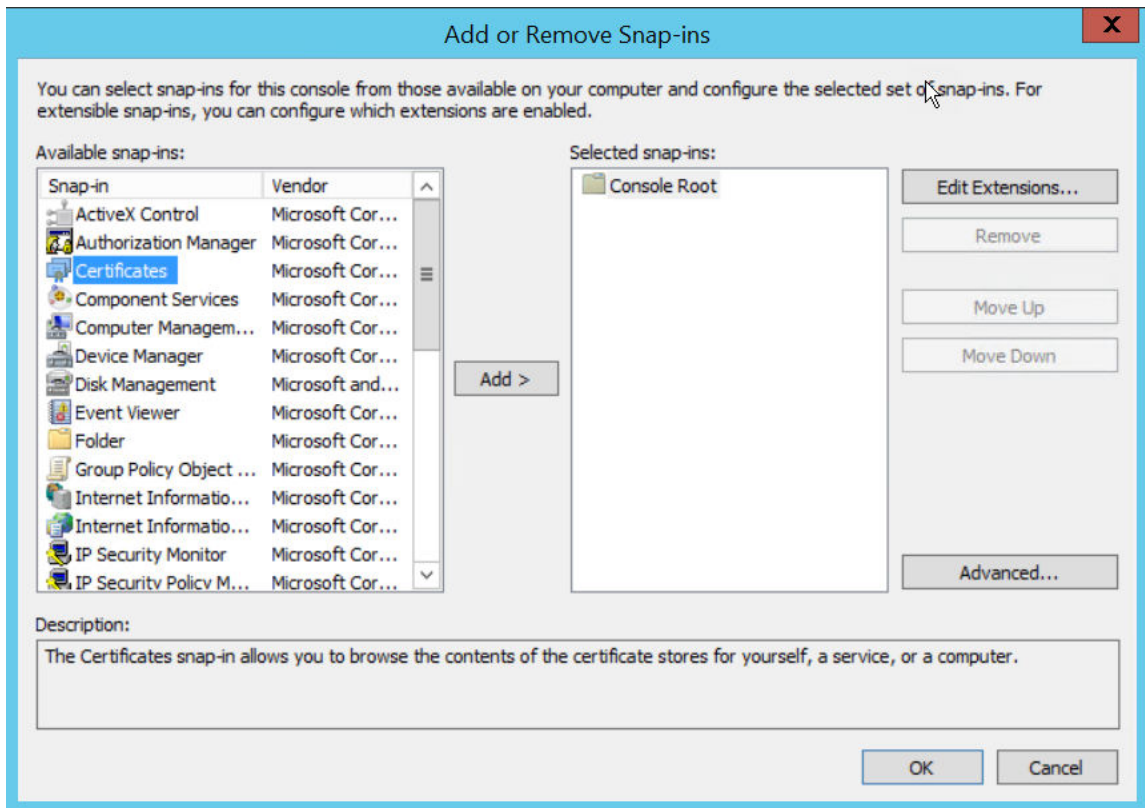
### Next Steps

- [Export the Public Key Certificate](#) on page 32

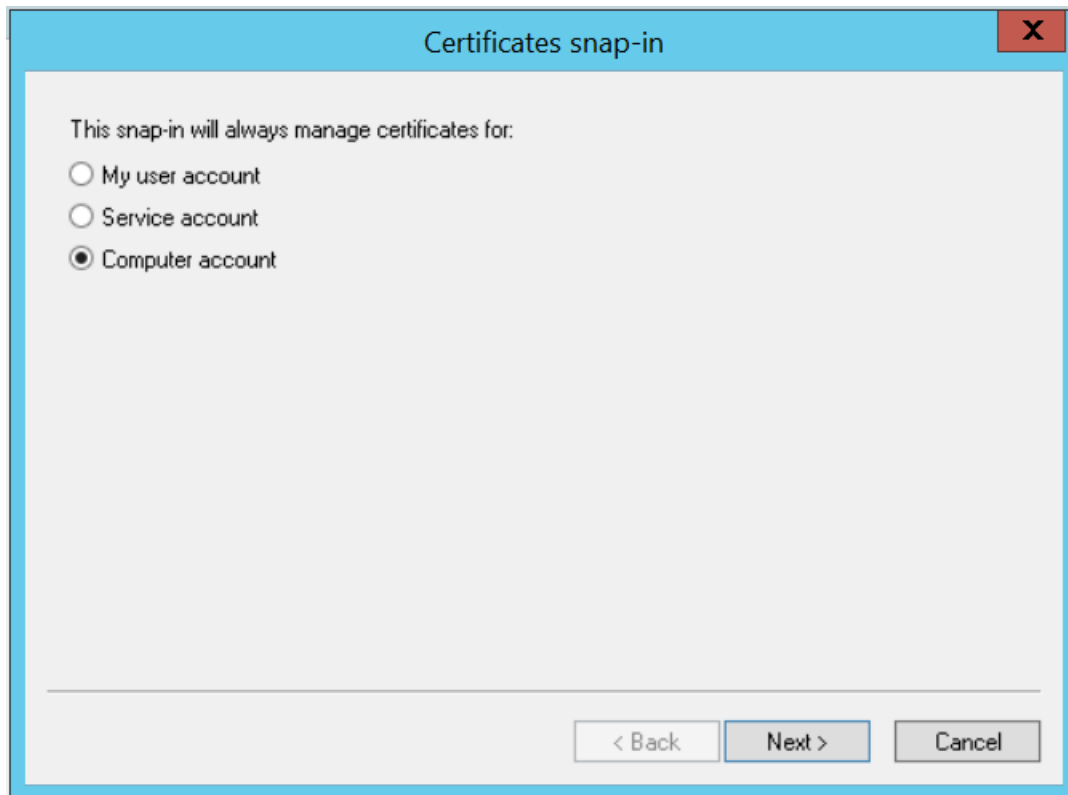
### Export the Public Key Certificate

#### Procedure

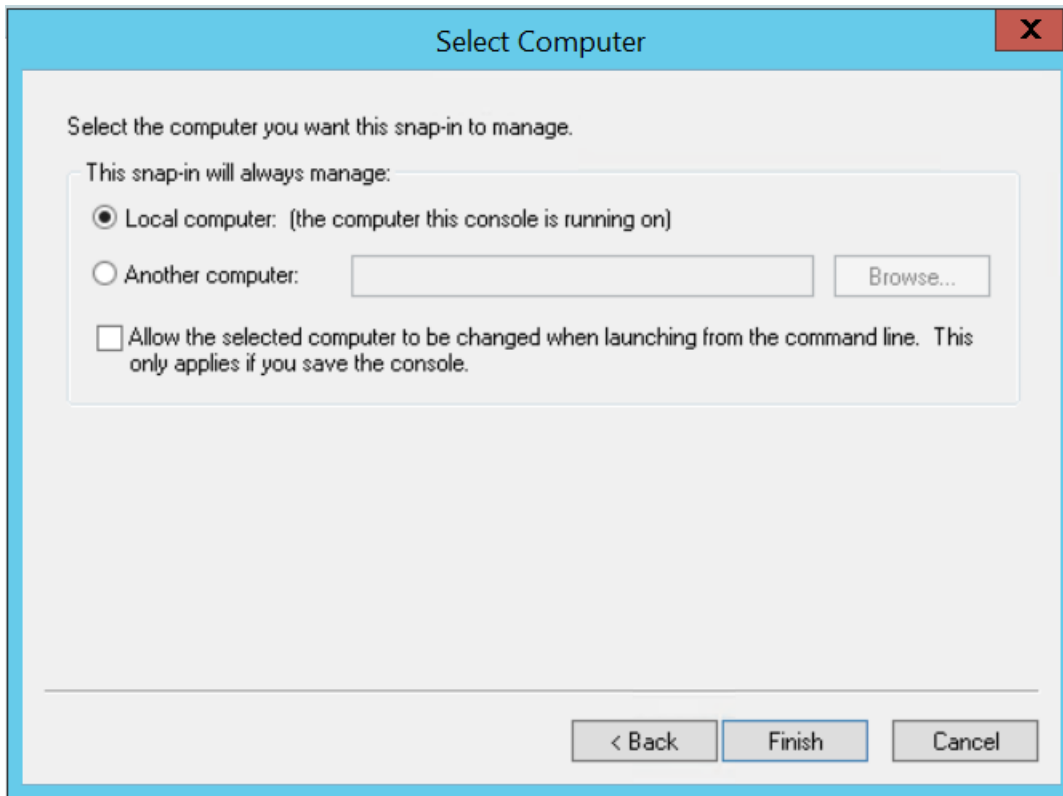
1. Access **Microsoft Management Console**.
2. In the main navigation bar, select **File**, then select **Add/Remove Snap-in**, and then select **Certificates**.  
The **Add or Remove Snap-ins** window appears.



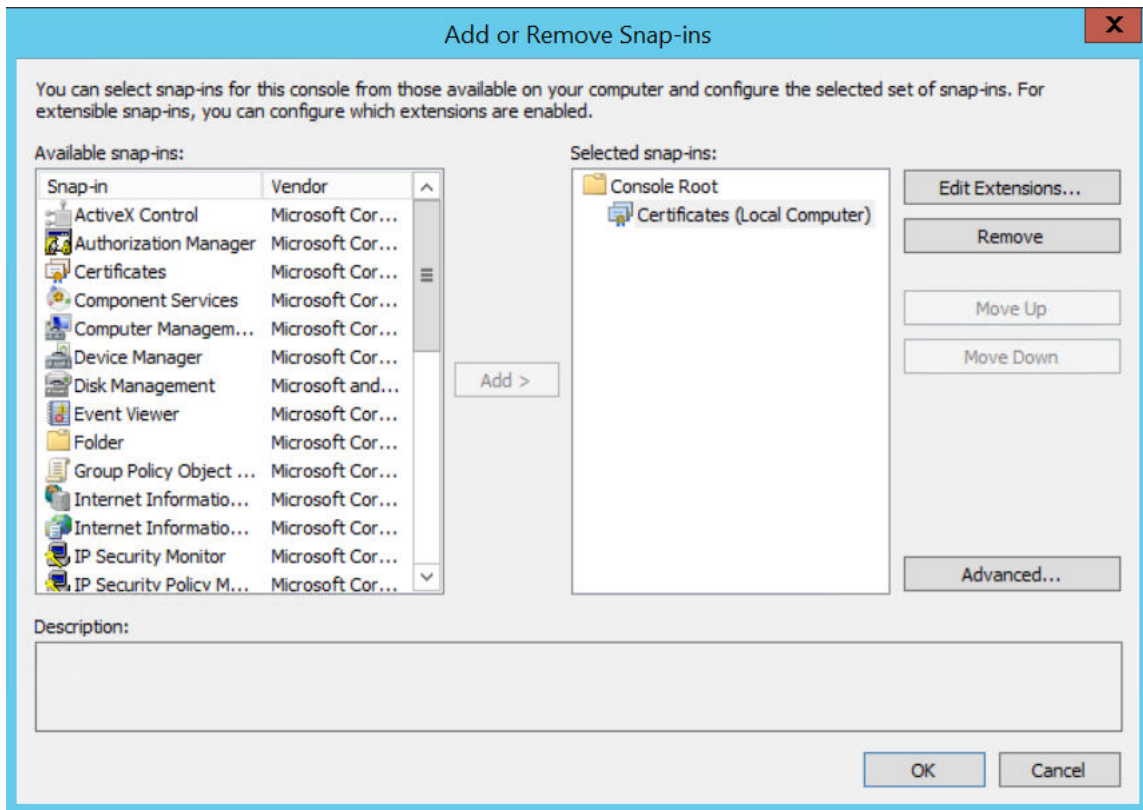
3. Select **Add**.  
The **Certificates snap-in** window appears.



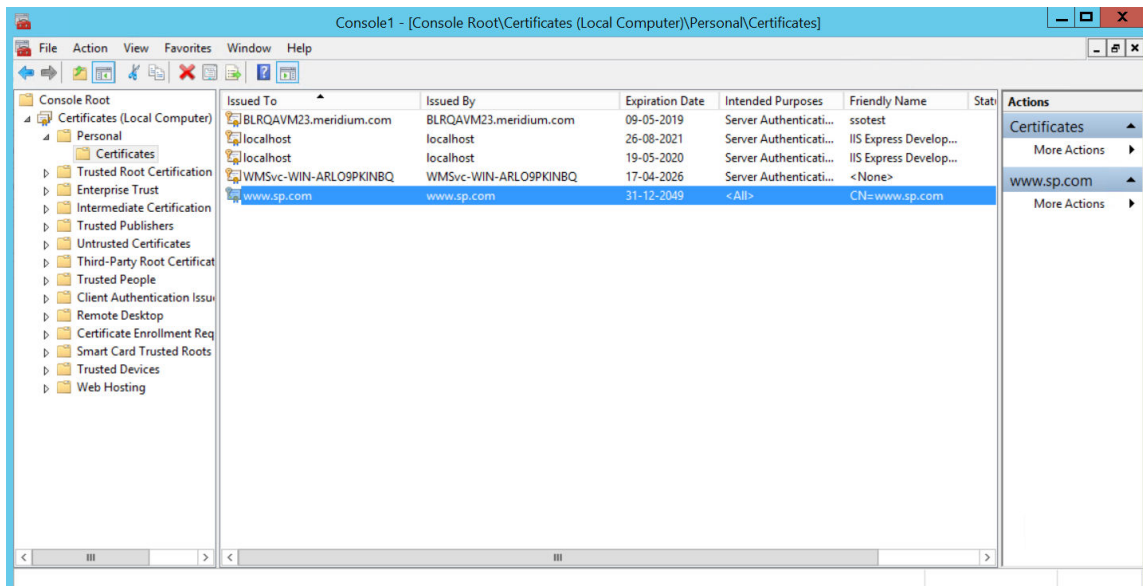
4. Select the **Computer account** option, and then select **Next**.  
The **Select Computer** window appears.



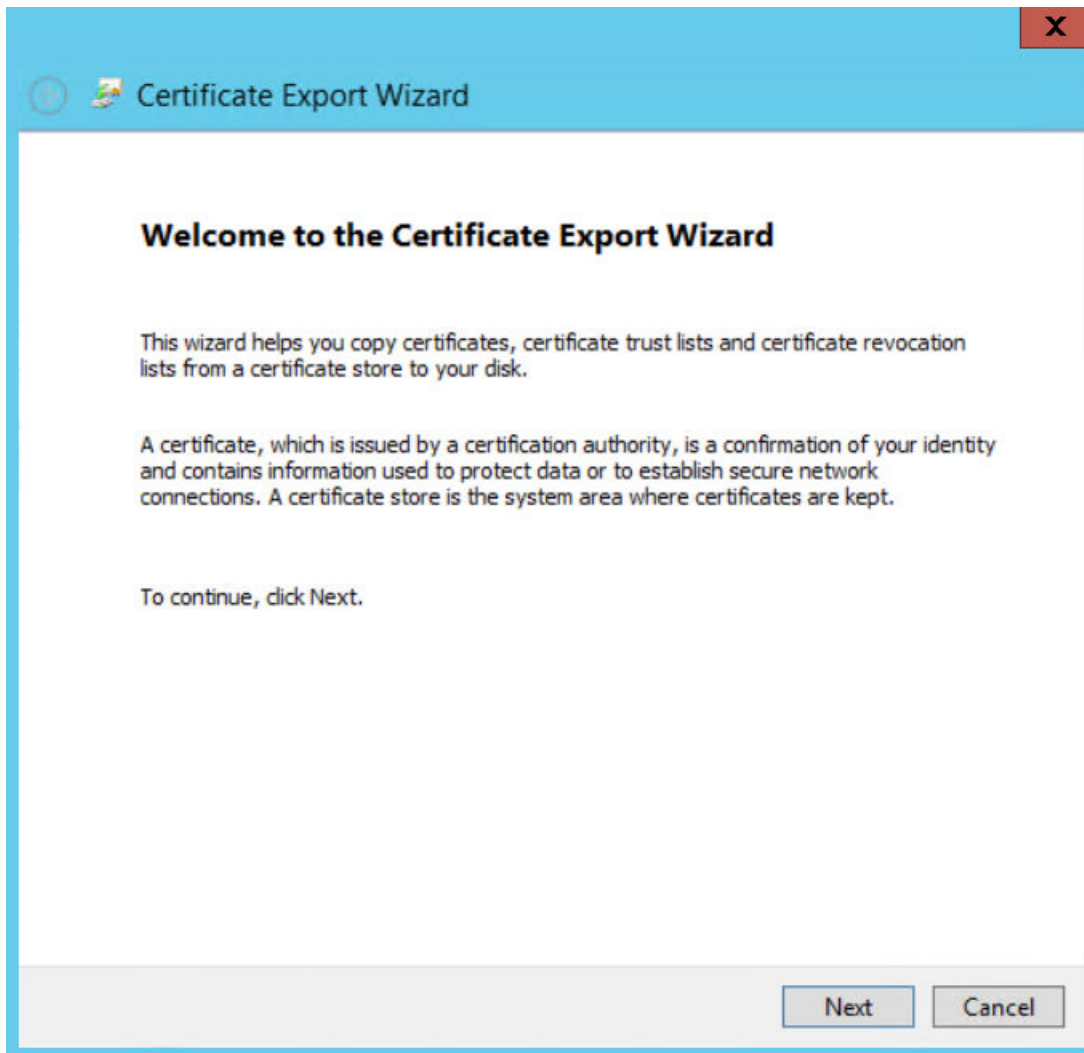
5. Select the **Local computer** option, and then select **Finish**.



6. In the **Add or Remove Snap-ins** window, select **OK**.  
The certificate appears in the **Personal > Certificates** folder of the **Certificates (Local Computer)** folder.
7. Select **Certificates (Local Computer)**, then select **Personal**, and then select **Certificates**.

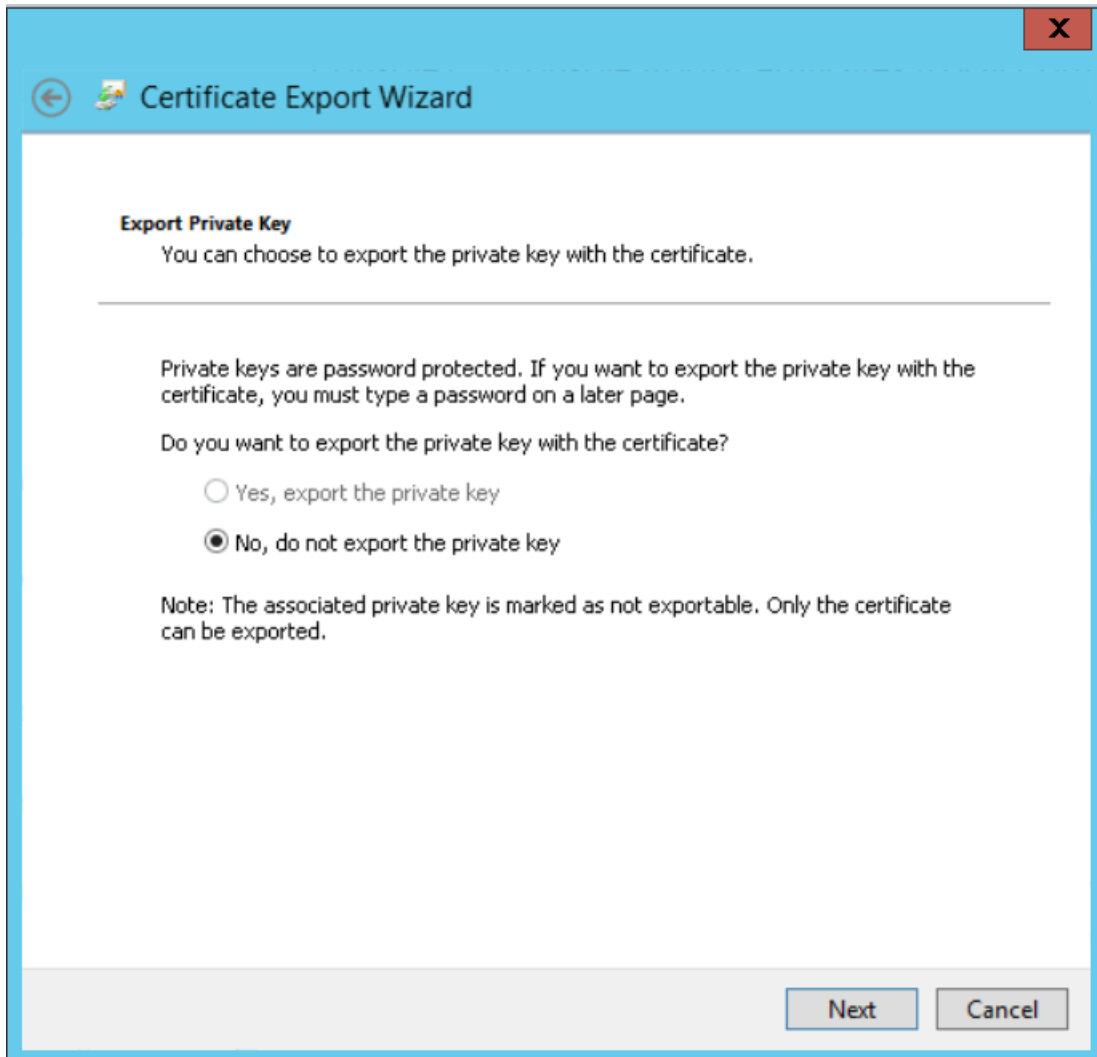


8. Right-click the certificate that you have installed, select **All Tasks**, and then select **Export**.  
The **Certificate Export Wizard** appears.

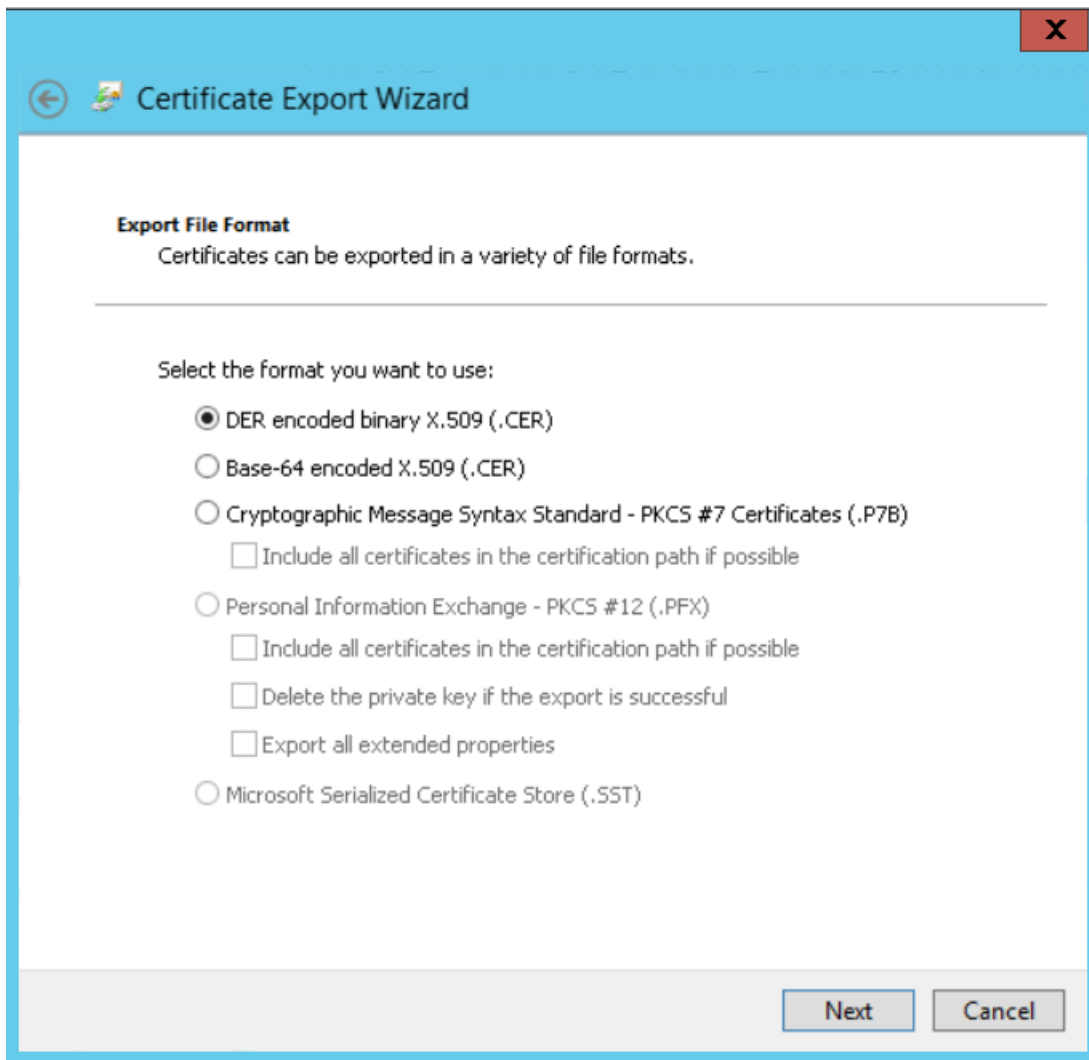


9. Select **Next**.

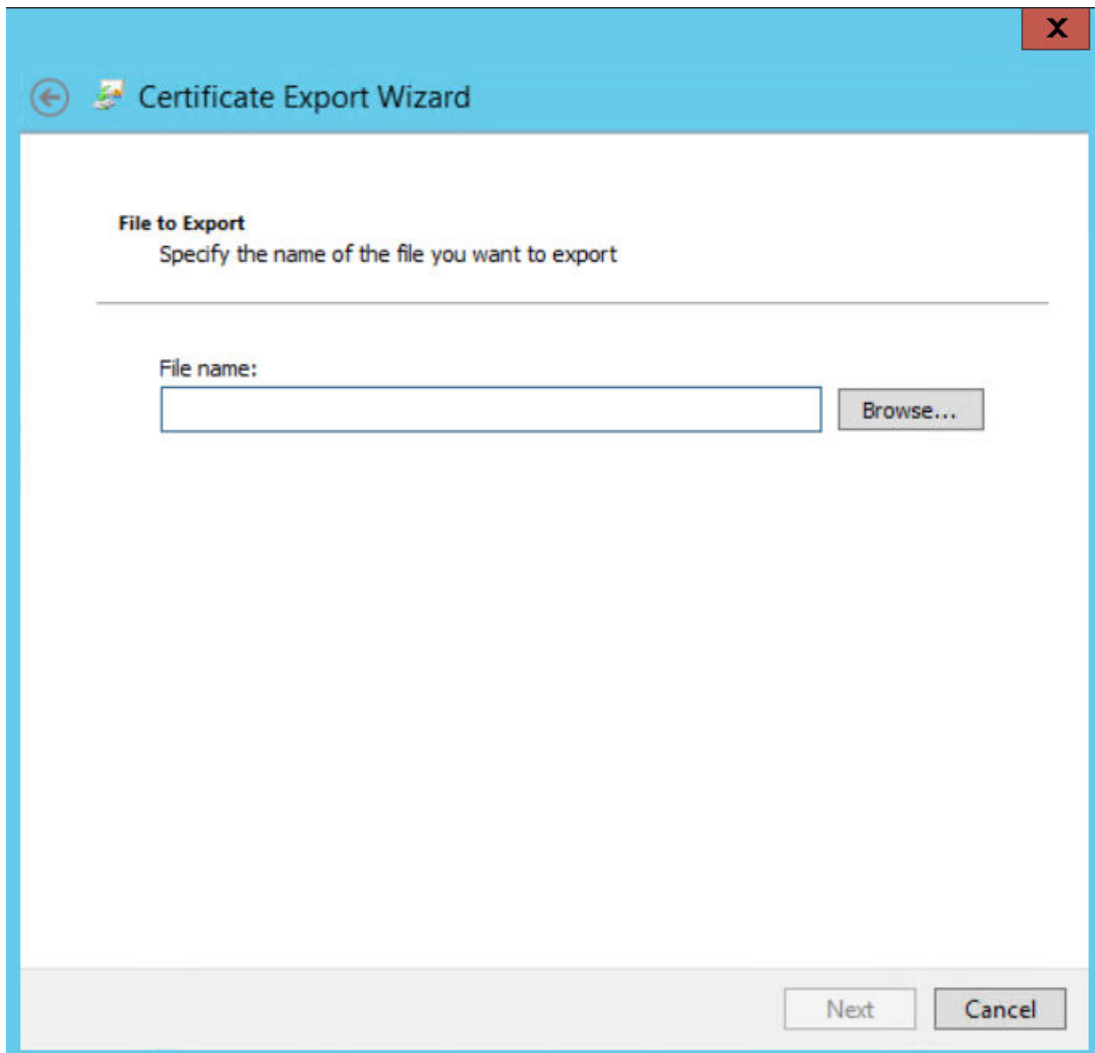




10. Select the **No, do not export the private key** option, and then select **Next**.



11. Select **DER encoded binary X.509 (.CER)**, and then select **Next**.



12. Select **Browse**, and then navigate to the location to which you want to export the certificate.
13. In the **File name** box, enter the same name that was mentioned while installing the certificate, and then, in the **Save as type** drop-down list box, select **DER Encoded Binary X.509 (.cer)**.
14. Select **Next**, and then select **Finish**.
15. Copy the exported certificate to Active Directory and install it. Please refer to section [Install the Token Signing idp.cer Certificate on the Application Server](#) on page 42, steps 5 - 8 for detailed process of installing the certificate.

### Next Steps

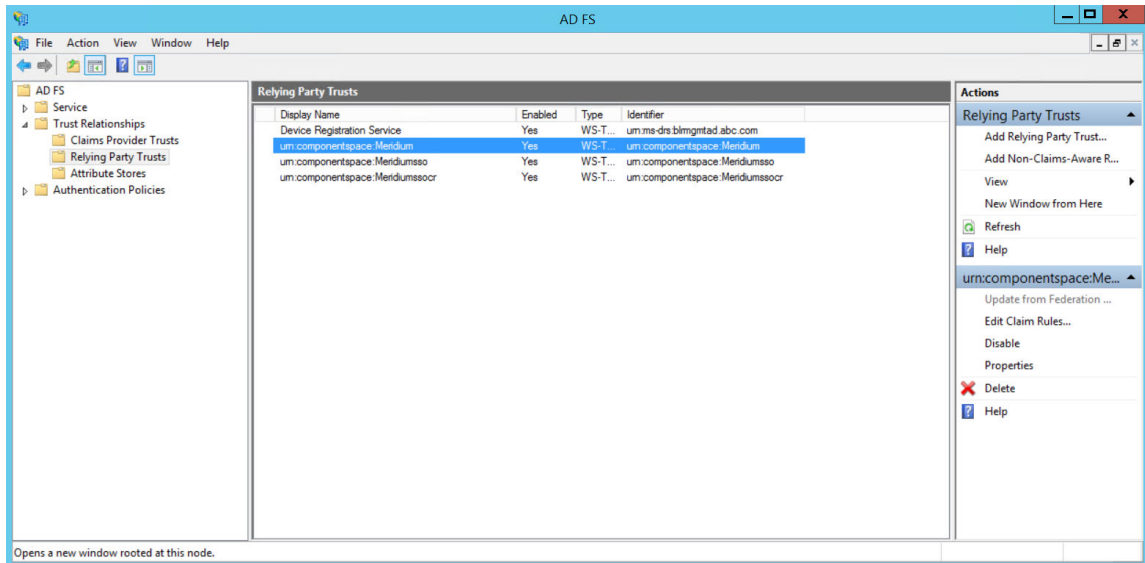
- [Copy the Certificate to Active Directory](#) on page 39

### Copy the Certificate to Active Directory

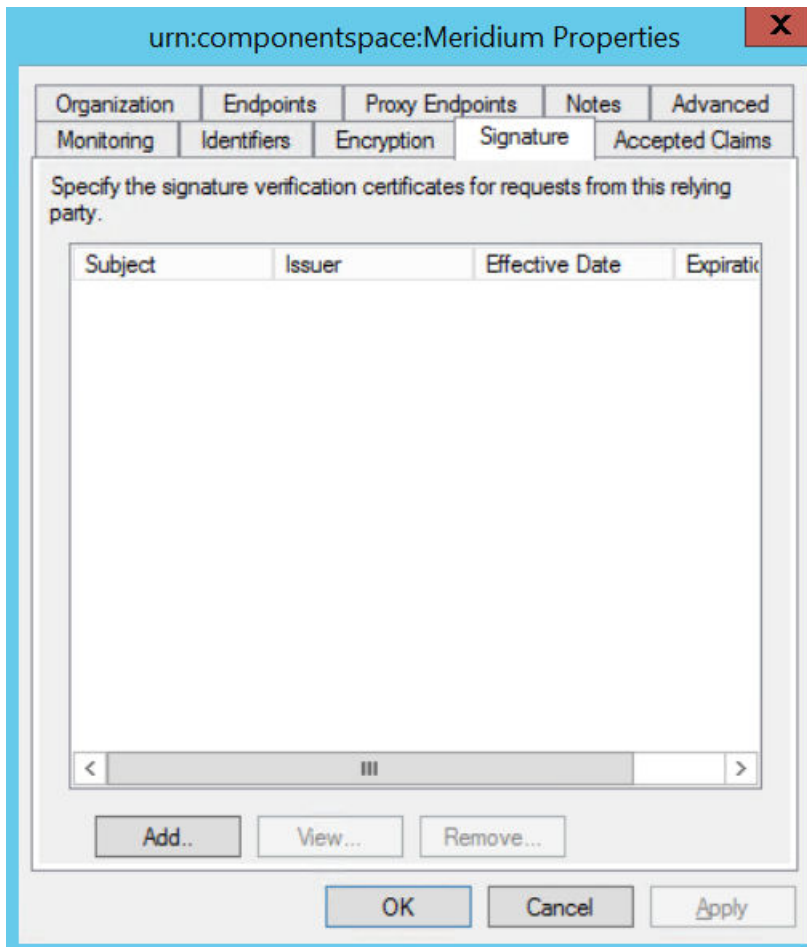
#### Procedure

1. Access **Control Panel**, then select **System and Security**, and then select **Administrative Tools**.

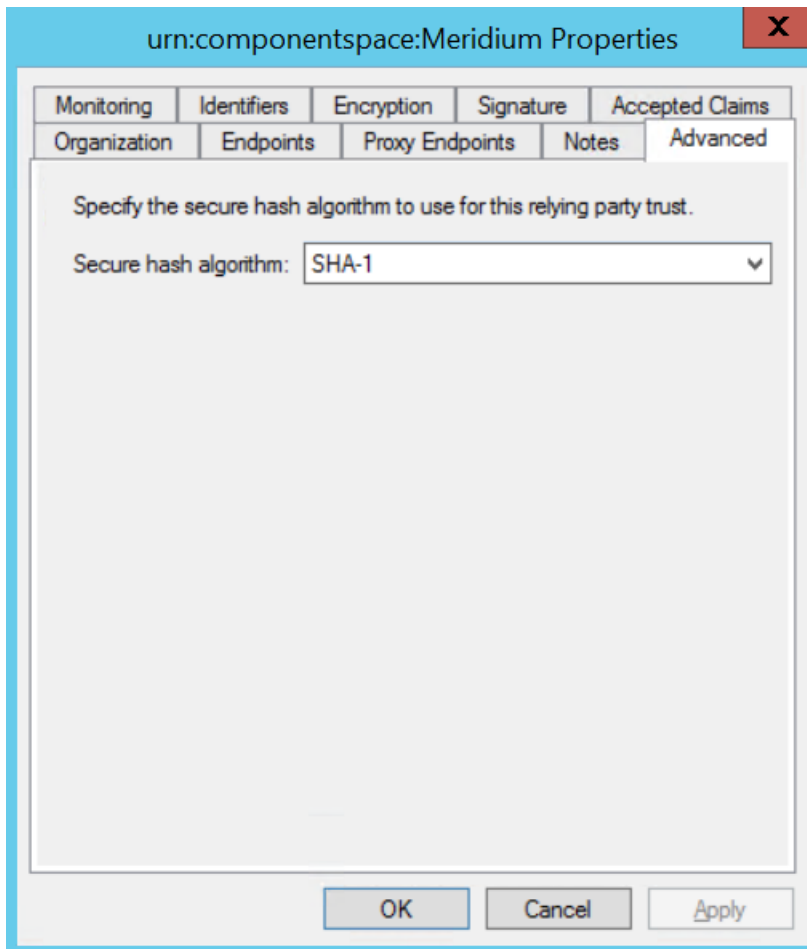
2. Select **AD FS Management**.  
The **AD FS** window appears.



3. Expand **Trust Relationships**, and then select **Relying Party Trusts**.
4. Select **urn:componentospace:Meridium**, and then, in the **Actions** section, select **Properties**.  
The **urn:componentospace:Meridium Properties** window appears.



5. Select the **Signature** tab, and then select **Add**.
6. Navigate to the location in which you have saved the certificate, and then select the file.
7. Select **Yes** to ignore the warning about certificate key length.
8. Select the **Advanced** tab.
9. In the **Secure hash algorithm** drop-down list box, based on the policy of your organization, select **SHA-1** or **SHA-256**.



10. Select **Apply**, and then select **OK**.

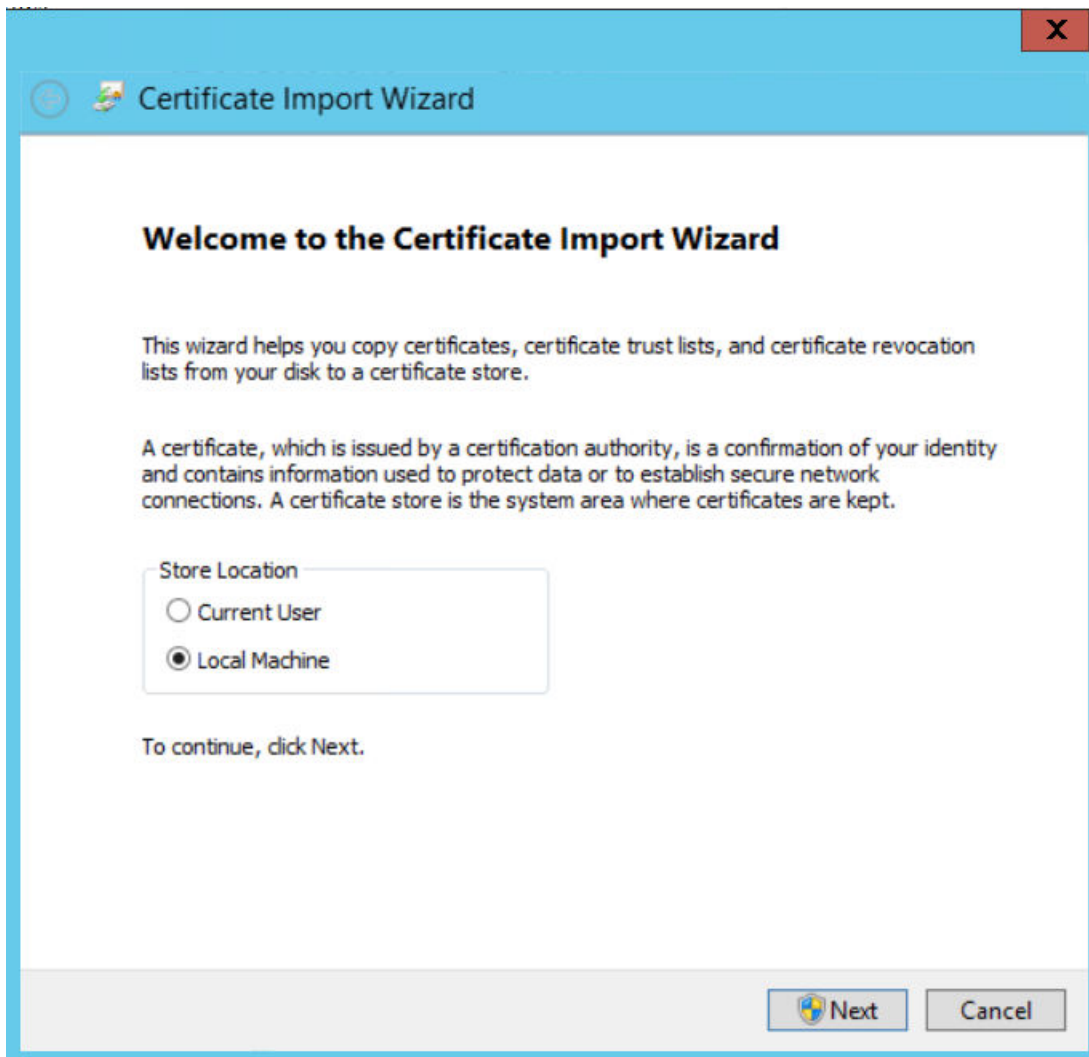
### Next Steps

- [Install the Token Signing idp.cer Certificate on the Application Server](#) on page 42

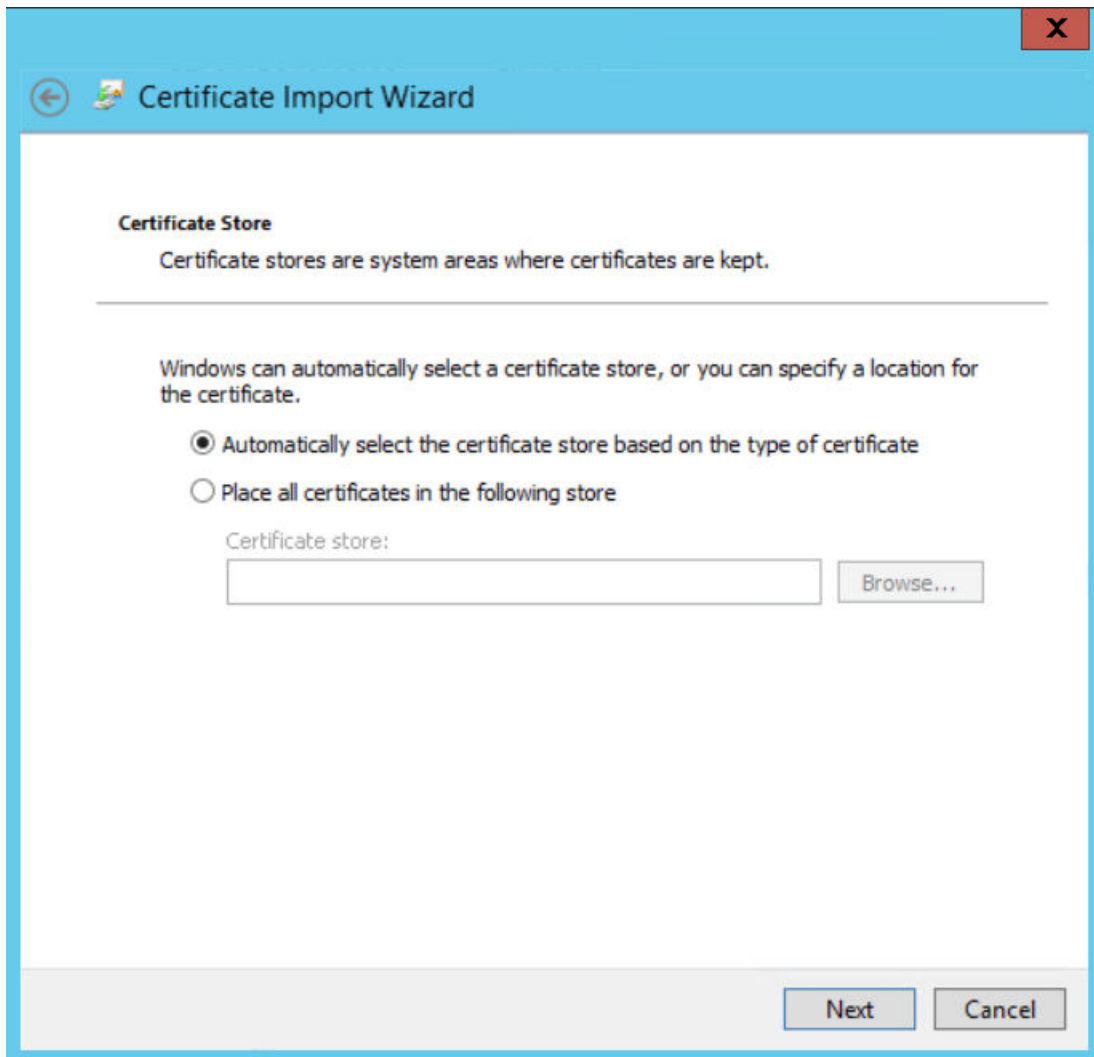
### Install the Token Signing idp.cer Certificate on the Application Server

#### Procedure

1. Access the Active Directory.
2. Export the token signing certificate and save the certificate.
3. Select **Finish**.
4. Copy the certificate to the api folder of the application server.
5. Right-click the file, and then select **Install Certificate**.  
The **Certificate Import wizard** appears.



6. Select **Local Machine**, and then select **Next**.



7. Select **Automatically select the certificate store based on the type of certificate**.
8. Select **Next**, and then select **Finish**.

#### Next Steps

- [Enable SSO On Site Authentication Using Active Directory](#) on page 47

## Federation Service Identifier from ADFS

To get Federation Service Identifier from ADFS.

#### Procedure

1. Open AD FS management console.
2. Select AD FS from left navigation and select 'Edit Federation Service Properties' from Actions pane on the right.
3. On the **Federation Service Properties** dialog window, you can find the Federation Service identifier value.



4. Navigate to `C:\Program Files\Meridium\ApplicationServer\api` folder and open `saml.json` file in a text editor. Update the `PartnerIdentityProviderConfigurations` **Name** value with the Federation Service Identifier.

#### **Next Steps**

- [About Enabling APM SSO](#)

# Chapter 3

---

## Enable SSO

### Topics:

- [About Enabling APM SSO](#)
- [Enable SSO On Site Authentication Using Active Directory](#)
- [Enable SSO Off-Site Authentication Using APM Server Setup](#)
- [Enable OAuth for APM using SSO Off-Site](#)

## About Enabling APM SSO

To enable APM SSO, perform one of the following tasks:

- [Enable SSO On Site Authentication Using Active Directory](#) on page 47
- [Enable SSO Off-Site Authentication Using APM Server Setup](#) on page 47

## Enable SSO On Site Authentication Using Active Directory

### Procedure

1. Run the LDAP Synchronization Process Manually or Schedule a LDAP Synchronization Process .
2. Log out of APM.
3. Log in to APM with the Windows user name and password.  
You are logged in.

### Results

- SSO On-Site Authentication is enabled.

### Next Steps


- [Configure APM Server](#) on page 50

## Enable SSO Off-Site Authentication Using APM Server Setup

### About This Task

**Note:** The settings shown below may vary depending on your system.

### Procedure

1. In the **Applications** menu, navigate to **ADMIN > Operations Manager > SSO Configuration**.  
The **SSO Configuration** page appears.
2. In the **IDP URL** box, enter the `PartnerIdentityProviderConfigurations Name` value configured in the `C:\Program Files\Meridium\ApplicationServer\api\saml.json` file.
3. Select the **SSO Enabled** check box.
4. Select .  
The SSO configuration is saved.
5. Log out of APM.
6. On the APM Server, in the APM program files, navigate to the folder `.\ApplicationServer\api`.

### Note:

- If you installed the software in the default location, the folder location will be `C:\Program Files\Meridium\ApplicationServer\api`.
  - The settings in the `saml.json` file must match the environment to which you are connecting. For example, the URL listed in `SingleSignOnServiceUrl` should point to the URL where you want to authorize the users.
7. Modify the assertion and response signing settings to match the signing settings that are specified on the IDP, and then save and close the file.
  8. Reset IIS.
  9. Access APM via a web browser.  
SSO off-site authentication is enabled.

### Next Steps

[Configure APM Server](#) on page 50.

## Enable OAuth for APM using SSO Off-Site

### About This Task

For specific workflows, you can authenticate with APM using a JSON Web Token (JWT) provided by an IDP using the OAuth protocol. To enable this authentication, you must provide the following configuration.

**Note:** This form of authentication can be used by external applications that require access to APM APIs, such as mobile applications.

### Procedure

1. On the APM server, navigate to `C:\ProgramData\Meridium`.
2. Open the `appsettings.Global.json` file using a text editor.
3. Add the following values:
  - `msEntraIDOAuthURL`: URL represents the location for the public signing key for JWT tokens issued by your IDP. For Microsoft Entra, this URL is `https://login.microsoftonline.com/<tenantId>`.
  - `msEntraIDAppID`: Application ID represents the application you have configured within your IDP.
4. Reset IIS.
5. Access APM APIs, providing the JWT token in the header of an HTTP request as a Bearer token.

### Results

OAuth authentication for APM using SSO Off-Site is enabled.

**Note:** In the Azure App Proxy settings, add `com.ge.mobileinspection://auth` to the Redirect URIs configuration for Mobile and Desktop Applications. To access the proxy settings, navigate to **App Registrations > Enterprise App Name > Authentication**.

# Chapter 4

---

## Configure the APM Server

### Topics:

- [Configure APM Server](#)

# Configure APM Server

## Before You Begin

- Ensure that the APM Server is installed and the server is configured to use SSL.
- Ensure that you can access the APM application in a web browser using HTTPS protocol.
- Ensure that the APM data source is configured and you can log in with administrative privileges.

## Procedure

1. Using a web browser, log in to APM as an Administrator.
2. In the **Applications** menu, navigate to **ADMIN > Operations Manager > Data Sources**. The **Data Sources** page appears.
3. In the **Data Source Host** box, enter the name of the APM server, and then select **Save**.
4. Enable LDAP Integration, configure Domain Record, and then schedule and run LDAP synchronization.

**Note:** For more information on how to enable LDAP Integration, configure a Domain Record, and schedule LDAP synchronization, refer to the Lightweight Directory Access Protocol documentation.

The users from Active Directory are now imported to APM and are assigned the appropriate Security Roles and Groups.

5. Stop IIS, the Redis service, and all Meridium Windows services.
6. Navigate to `C:\Program Files\Meridium\ApplicationServer\api`
7. Using a json or text editor, access the file `saml.json`.
8. Add a new configuration to `<PartnerIdentityProviderConfigurations>` json array or update the existing configuration by setting the following attributes:
  - Name: As described in sections [Configure Azure Active Directory as the Identity Provider \(IDP\)](#) on page 4 and [About Configuring Identity Provider \(IDP\) on Active Directory](#) on page 9.
  - WantSAMLResponseSigned: false
  - WantAssertionSigned: true
  - WantAssertionEncrypted: false
  - UseEmbeddedCertificate: false
  - SingleSignOnServiceUrl: {https version of Federation Service identifier} + "/adfs/ls". For example, `https://myadfsserver/adfs/ls`. This information must be obtained from the ADFS team. In the case of Azure AD, please refer to section [Configure Azure Active Directory as the Identity Provider \(IDP\)](#) on page 4

### Note:

For SHA-256, you must add the following two attributes to the `saml.json` file:

- "DigestAlgorithm":"http://www.w3.org/2001/04/xmlenc#sha256"
- "SignatureAlgorithm":"http://www.w3.org/2001/04/xmldsig-more#rsa-sha256"

The following example shows the configured `saml.json` file:

```
{ "SAML" :  
{
```

```

    "$schema": "https://www.componentspace.com/schemas/saml-config-
schema-v1.0.json",
    "Configurations":
    [
      {
        "LocalServiceProviderConfiguration":
        {
          "Name": "urn:componentspace:Meridium",
          "AssertionConsumerServiceUrl": "https://<APM Server
Name>/Meridium/api/v1/core/security/ssologinauth",
          "LocalCertificates":
          [
            {
              "FileName": "sp.pfx",
              "Password": "password"
            }
          ]
        },
        "PartnerIdentityProviderConfigurations":
        [
          {
            "Name": "http://fs.xyz.com/adfs/services/trust",
            "Description": "ADFS",
            "SignAuthnRequest": true,
            "WantSamlResponseSigned": false,
            "UseEmbeddedCertificate": true,
            "WantAssertionEncrypted": false,
            "WantAssertionSigned": true,
            "SingleSignOnServiceUrl": "https://fs.xyz.com/adfs/ls/
idpinitiatedsignon.aspx",
            "PartnerCertificates":
            [
              {
                "FileName": "idp.cer"
              }
            ]
          }
        ]
      }
    ]
  }
}

```

9. Save and close the file `saml.json`.

10. Start IIS, the Redis service, and all Meridium Windows Services.