



GE VERNOVA

Asset Performance Management

On-Premises APM

V5.2.2.0.0

Action Management

Contents

Chapter 1: Overview	1
Overview of the Action Management Module	2
Access the Action Management Page	2
The Recommended Actions Pane	2
Recommendation Actions Workflow	3
Chapter 2: Workflow	5
Action Management: Manage Recommended Actions Workflow	6
Action Management: Execute Recommended Action Workflow	7
Chapter 3: Strategy Actions	10
About Strategy Actions	11
Access the Strategy Actions Section	11
Filter Strategy Actions	11
Strategy Actions Features	11
Chapter 4: Recommended Actions	12
About Recommended Actions	13
Search Recommended Actions	13
Filter Recommended Actions	14
Create a Recommended Action	14
Modify a Recommended Action	14
Modify Linked Recommended Actions	14
View Recommended Actions in Bulk Data Form	15
Supersede Recommended Actions	15
Unlink Recommended Actions	16
Delete Recommended Actions	16
Export Recommended Actions	17
Chapter 5: Deployment and Upgrade	18

Deployment	19
Upgrade	19
Chapter 6: Reference	20
General Reference	21
Family Field Descriptions	26
Catalog Items	30

Copyright Digital, part of GE Vernova

© 2025 GE Vernova and/or its affiliates. All rights reserved.

GE, the GE Monogram, and Predix are trademarks of General Electric Company used under trademark license.

This document may contain Confidential/Proprietary information of GE Vernova and/or its affiliates. Distribution or reproduction is prohibited without permission.

THIS DOCUMENT AND ITS CONTENTS ARE PROVIDED "AS IS," WITH NO REPRESENTATION OR WARRANTIES OF ANY KIND, WHETHER EXPRESS OR IMPLIED, INCLUDING BUT NOT LIMITED TO WARRANTIES OF DESIGN, MERCHANTABILITY, OR FITNESS FOR A PARTICULAR PURPOSE. ALL OTHER LIABILITY ARISING FROM RELIANCE UPON ANY INFORMATION CONTAINED HEREIN IS EXPRESSLY DISCLAIMED.

Access to and use of the software described in this document is conditioned on acceptance of the End User License Agreement and compliance with its terms.

Chapter 1

Overview

Topics:

- [Overview of the Action Management Module](#)
- [Access the Action Management Page](#)
- [The Recommended Actions Pane](#)
- [Recommendation Actions Workflow](#)

Overview of the Action Management Module

Action Management is a tool that allows you to define and to record the method by which change can be implemented to correct conditions, intent, or behaviors through Strategy Actions and Recommended Actions.

Note: Throughout this documentation, we use the term Recommendations to refer generically to any record that belongs to the Recommendations family or any of its subfamilies. When it is necessary to distinguish between Recommendation records that belong to different families, we use the specific family names.

Access the Action Management Page

Procedure

In the **Applications** menu, navigate to the **STRATEGY** section, and then select **Action Management**.

The **Action Management** page appears.

The screenshot shows the 'Action Management' page with a breadcrumb 'Asset: Home' and a refresh icon. The main content is a table with two tabs: 'Strategy Actions' (selected) and 'Recommended Actions'. The table has columns for ACTION NAME, INTERVAL, INTER., STRATEGY, MOD., IMPLEMENTATION, EAM..., LAST..., and PACKAGE NAME. The 'Strategy Actions' tab contains 14 rows of data, including FMEA Action2, FMEA Action1, FMEA Action3, Action D, Action C, Action B, Action E, Action F, Action A, HE-A02, HE-A03, HE-A05, HE-A04, HE-A01, and a ROOT row.

	ACTION NAME	INTERVAL	INTER.	STRATEGY	MOD.	IMPLEMENTATION	EAM...	LAST...	PACKAGE NAME
<input type="checkbox"/>	FMEA Action2	8	Mon...	~ ~ PUMP					
<input type="checkbox"/>	FMEA Action1	12	Mon...	~ ~ PUMP					
<input type="checkbox"/>	FMEA Action3	45	Wee...	~ ~ PUMP					
<input type="checkbox"/>	Action D	12	Mon...	~ 3000-MERD-10...					
<input type="checkbox"/>	Action C	250	Days	~ 3000-MERD-10...					
<input type="checkbox"/>	Action B	1	Years	~ 3000-MERD-10...					
<input type="checkbox"/>	Action E	12	Mon...	~ 3000-MERD-10...					
<input type="checkbox"/>	Action F	12	Mon...	~ 3000-MERD-10...					
<input type="checkbox"/>	Action A	12	Mon...	~ 3000-MERD-10...					
<input type="checkbox"/>	HE-A02	12	Wee...	~ CLARIFIED OIL/...					
<input type="checkbox"/>	HE-A03	20	Days	~ CLARIFIED OIL/...					
<input type="checkbox"/>	HE-A05	55	Hours	~ CLARIFIED OIL/...					
<input type="checkbox"/>	HE-A04	1	Years	~ CLARIFIED OIL/...					
<input type="checkbox"/>	HE-A01	5	Mon...	~ CLARIFIED OIL/...					
<input type="checkbox"/>	ROOT	1	Mon...	~ Harvey-Davidsu...	ASI	ROOT			

Note: The **Action Management Overview** page is not updated automatically when you return to the previously opened tab. You can select to update the page.

The Recommended Actions Pane

About This Task

In an analysis, when you select , the **Recommended Actions** pane expands. The **Recommended Actions** pane displays all of the recommendations in the selected analysis.




7 Recommended Actions

Action Management



Bearing Issues UP000000001050000 Updated by: ASHHAR MUHAMMAD On Monday, November 04, 2019	Completed
Increased Flow Rate UP000000001050000 Updated by: Adam Luff On Monday, October 22, 2018	Proposed
Flow rate decrease due to high casing pressure UP000000001050000 Updated by: Adam Luff On Thursday, October 11, 2018	Proposed
Technician Required to visit Bearing UP000000001050000 Updated by: Samiksha Rustagi On Thursday, October 04, 2018	Proposed
Local Bearing Problem UP000000001050000 Updated by: Samiksha Rustagi On Thursday, October 04, 2018	Proposed

You can select the following buttons to use Recommended Action functionality:



-  : Displays a [search](#) text box.
-  : Displays [filtering](#) information.
-  : Collapses the **Recommended Actions** pane.

Note: Next to the Recommended Action ID, you can select one or more check boxes to apply the selected functionality to multiple recommendations.

Frequent stop on pump - Do nothing
PMP-8281 ACID BLOWDOWN PUMP
Updated by: Jane Smith On Tuesday, May 23, 2017 Pending

The Recommended Action ID provides an at-a-glance view of the:

- Name of the Recommended Action.
- Asset ID.
- Current state configuration.
- Last person who updated the Recommended Action.

Tip: For a more detailed view of the Recommended Actions in the pane, select  to expand the pane to full screen. To make the pane return to its original size, select  again.

Recommendation Actions Workflow

The [Recommended Actions](#) in APM can be used as a tool to manage all the Recommendation records created for an analysis. Recommendations are classified as either Strategic Recommendations (Strategy Actions) or Performance Recommendations. The **Recommended Actions** pane provides a common set of functions that is used by both Strategy Actions and Recommended Actions.

Important: The following set of procedures is not comprehensive. Some modules document their own Recommended Actions-specific functionality.

Using the **Recommended Actions** pane, you can perform the following functions:

- [Search Recommended Actions](#)
- [Filter a Recommended Actions](#)

3. [Modify Recommended Actions State Assignments](#)
4. [Supersede Recommended Actions](#)
5. [Unlink Linked Recommendation Records](#)
6. [Delete a Recommended Actions](#)

Chapter 2

Workflow

Topics:

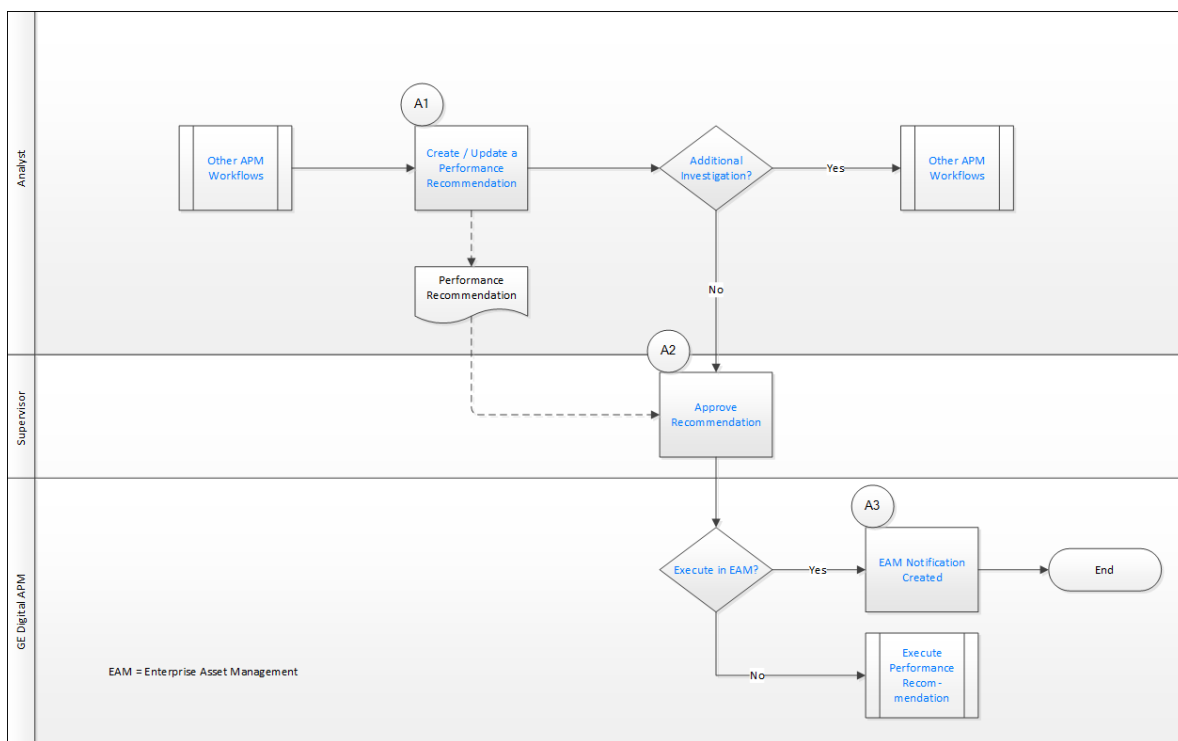
- [Action Management: Manage Recommended Actions Workflow](#)
- [Action Management: Execute Recommended Action Workflow](#)

Action Management: Manage Recommended Actions Workflow

Recommended Actions are created, assigned, and approved in the Manage Recommended Action workflow. Recommended Actions requiring execution are managed using the Execute Recommended Actions workflow.

In the following workflow diagram, the blue text in a shape indicates that the corresponding description has been provided in the sections that follow the diagram. For more information, refer to the [Interpreting the Workflow Diagrams](#) topic in the [APM Product Workflows](#) documentation.

Note: For information on the personas associated with a APM module, refer to the [APM Product Workflows](#) documentation.



1. [Create/Update Recommended Action](#) on page 6
2. [Other Workflows](#) on page 7
3. [Additional Investigation?](#) on page 7
4. [Other Workflows](#) on page 7
5. [Approve Recommendation](#) on page 7
6. [Execute in EAM?](#) on page 7
7. [EAM Notification Created](#) on page 7
8. [Execute Recommended Action](#) on page 7

Create/Update Recommended Action

Persona: Analyst

Create or update a Recommended Action based on opportunities or needs identified in other analysis processes. The Recommended Action is associated with an Asset (Functional Location/Equipment) by the user or by association with the initiating object.

Additional Investigation?

Persona: Analyst

If a Recommended Action is assigned for further investigation, it is carried over to other work processes. If not, then the recommendation is assigned for approval.

Approve Recommendation

Persona: Supervisor

Approve the Recommended Action for execution.

Execute in EAM?

Persona: APM

If a Recommended Action is marked to raise an EAM Notification, then an EAM Notification is created. If not, then the Recommended Action awaits execution by the assigned person.

Other Workflows

Persona: Analyst

Recommended Actions are requests for corrective action or additional investigation. Recommended Actions are raised from within other APM modules, including Core Analysis, Asset Health Manager, Metrics and Scorecards, Root Cause Analysis, Policy Execution, Process Hazards Analysis (PHA), and Reliability Analysis. If additional investigation is needed, it will be conducted in other APM Modules, including Core Analysis, Asset Health Manager, Root Cause Analysis, Process Hazards Analysis (PHA), and Reliability Analysis.

EAM Notification Created

Persona: APM

If a Recommended Action is to be executed as an EAM System Work Order, an appropriate work item request in the corporate EAM System is triggered by APM.

Execute Recommended Action

Persona: APM

The assigned person should execute the Recommended Action.

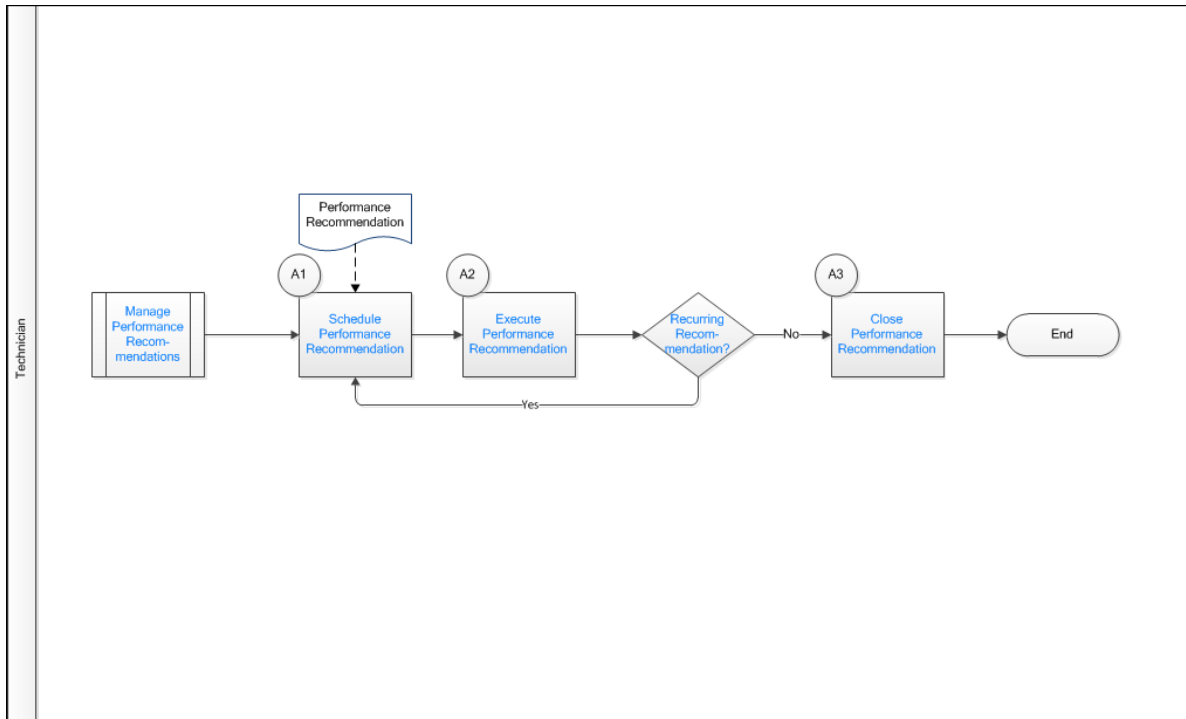
Go to the [Execute Recommendations workflow](#).

Action Management: Execute Recommended Action Workflow

Recommended Actions are created, assigned, and approved in the Manage Recommended Action workflow. Recommended Actions requiring execution are managed using the Execute Recommended Actions workflow.

In the following workflow diagram, the blue text in a shape indicates that the corresponding description has been provided in the sections that follow the diagram. For more information, refer to the [Interpreting the Workflow Diagrams](#) topic in the [APM Product Workflows](#) documentation.

Note: For information on the personas associated with a APM module, refer to the [APM Product Workflows](#) documentation.



1. [Action Management: Manage Recommended Actions Workflow](#) on page 6
2. [Schedule Recommended Action](#) on page 8
3. [Execute Recommended Action](#) on page 7
4. [Recurring Recommendation?](#) on page 8
5. [Close Recommended Action](#) on page 9

Schedule Recommended Action

Persona: Technician

Place the Recommended Action that is ready for execution in a Scheduled state.

Execute Recommended Action

Persona: APM

The assigned person should execute the Recommended Action.

Go to the [Execute Recommendations workflow](#).

Recurring Recommendation?

Persona: Technician

If a Recommended Action is recurring, then the Recommended Action is rescheduled for its next execution. If not, then the Recommended Action can be closed.

Close Recommended Action

Persona: Technician

Close the Recommended Action.

Chapter 3

Strategy Actions

Topics:

- [About Strategy Actions](#)
- [Access the Strategy Actions Section](#)
- [Filter Strategy Actions](#)
- [Strategy Actions Features](#)

About Strategy Actions

The **Strategy Actions** tab within Action Management is designed to provide the ability to manage the implementation of all Actions that have been approved as part of an Asset Strategy across the enterprise. The features and functions within Strategy Actions are identical to the **Implement Actions** workspace with the Asset Strategy Management (ASM) module, however the operations can be performed for Actions from multiple Asset Strategies thus providing bulk implementation and management capabilities.

Access the Strategy Actions Section


Procedure

1. Access the [Action Management](#) page.
2. In the **Action Management** page, select **Strategy Actions**.

The **Strategy Actions** section appears.

Filter Strategy Actions

Procedure

1. Access the **Implement Actions** section.
2. In the Implement Actions section, select the  icon to open the **Strategy Action Filters** window .
3. Select the required filters and click **Apply**.
The required filters are applied to the list of Actions.

Strategy Actions Features

About This Task

The Strategy Actions section contains features to implement actions. To view a complete list of these features and workflows, see [Implement Actions](#).

Chapter 4

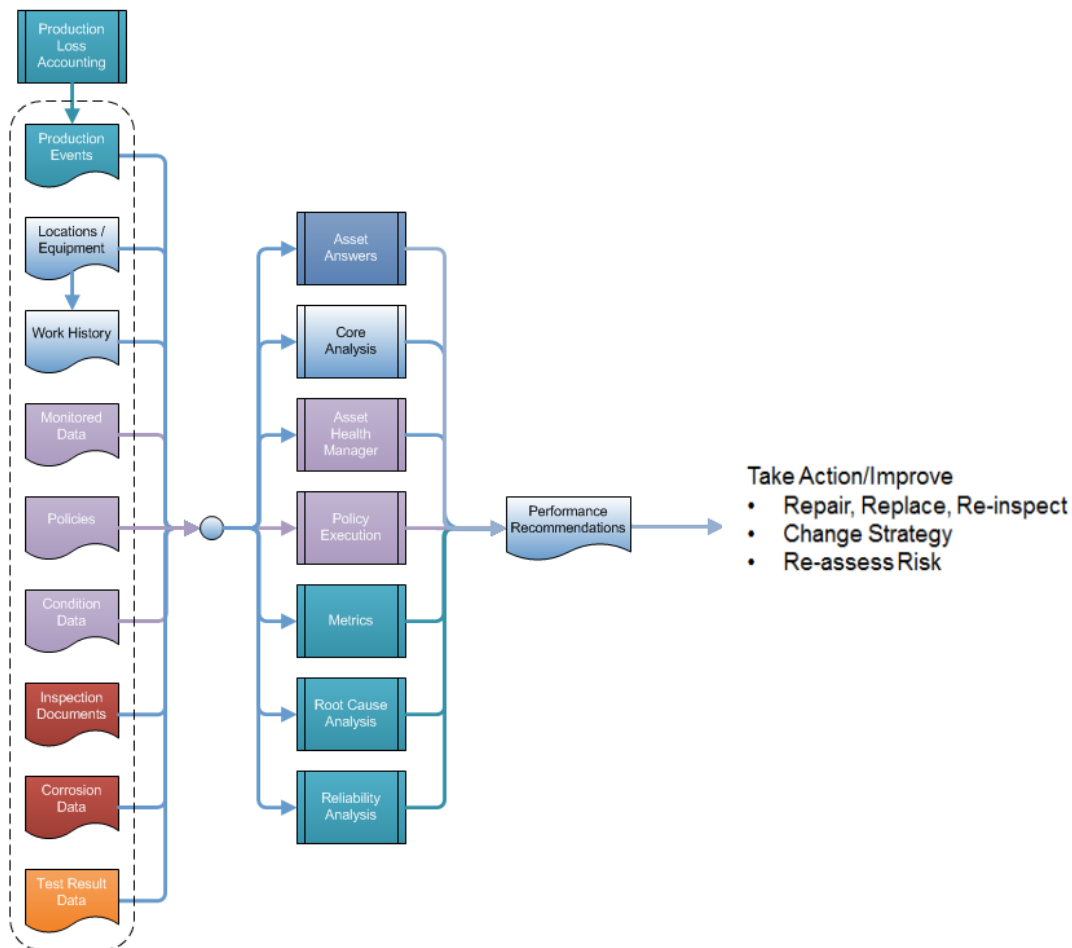
Recommended Actions

Topics:

- [About Recommended Actions](#)
- [Search Recommended Actions](#)
- [Filter Recommended Actions](#)
- [Create a Recommended Action](#)
- [Modify a Recommended Action](#)
- [Modify Linked Recommended Actions](#)
- [View Recommended Actions in Bulk Data Form](#)
- [Supersede Recommended Actions](#)
- [Unlink Recommended Actions](#)
- [Delete Recommended Actions](#)
- [Export Recommended Actions](#)


About Recommended Actions

Recommended Actions are generated from multiple sources across the application. They can be created as an outcome of a performance analysis or from executing other workflows or activities and they are generally used to execute one-time, corrective actions for improvement. Recommended Actions are not sent to ASM as a part of a larger strategy and they may or may not be linked to an asset. Recommended Actions have a workflow that is focused on approval, execution, and tracking of improvement.



Search Recommended Actions


Procedure

1. Access the **Recommended Actions** section.
2. In the **Recommended Actions** section, select . In the grid, filter boxes appear.
3. In the filter box for any column, enter the search information.

Your results appear.



Filter Recommended Actions

Procedure

1. [Access the Recommended Actions section.](#)
2. Select .
The **Recommendation Filters** window appears.
3. Select the criteria that you want to use to filter the Recommended Actions, and then select **Apply**.
The **Recommended Actions** section will load with the specified Recommendations.


Create a Recommended Action

Procedure

1. [Access the Recommendation Actions section.](#)
2. Select .
A recommendation datasheet appears.
3. As needed, enter values in the [available fields](#).
4. Select .
A message appears, confirming that the Recommended Action has been updated.
5. Select **Close**.
Your Recommended Action has been created and saved.

Modify a Recommended Action

Procedure


1. [Access the Recommended Actions section.](#)
2. Select the link for the Recommended Action that you want to modify.
A recommendation data sheet appears.
3. As needed, modify the available fields, and then select .
4. Select **Close** to save your changes and return to the **Recommended Actions** section.

Modify Linked Recommended Actions

Before You Begin

This documentation assumes you already have Recommended Actions that are already Consolidated or Superseded, and are ready to view on the **Recommended Actions** page.

Procedure

1. Access the [Recommended Actions](#) section.
2. Next to the specific Recommended Action that you want to view, select the check box. The Recommendation is highlighted.
3. Select .
The **Linked Recommendations** window appears.

Next Steps


- [Modify a Recommended Action](#)
- [Unlink a Recommended Action](#)

View Recommended Actions in Bulk Data Form

Before You Begin

This documentation assumes that you already have multiple Recommended Actions ready to view.

Procedure


1. Access the [Recommended Actions](#) section.
2. Next to each Recommended Action that you want to view, select the check boxes.
Note: The Recommended Actions selected must be in the same family to be viewed together.
3. Select .
In a new page, the **Bulk Data Form** appears displaying the selected Recommended Actions.

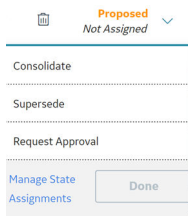
Supersede Recommended Actions

Before You Begin

Note: This documentation assumes that you are working with Recommended Actions with subfamilies that include Supersede.

Procedure

1. Access the [Recommendation Actions](#) section.
2. Next to each Recommended Action that will be involved in the Supersede operation, select the check box.
Note: The Recommended Actions must be in the same family and same state.
3. In the page, select .
The state control menu appears.





4. Select **Supersede**, and then **Done**.
The **Supersede Recommendations** window appears, showing the Recommended Actions that will be superseded.
5. Select **Supersede**.
A message appears, confirming that the Recommended Actions have been superseded.

Unlink Recommended Actions

Before You Begin


These steps assume that you are working with Recommended Actions that have previously been Superseded.

Procedure

1. Access the [Recommendation Actions](#) page.
2. Next to the Recommended Action that you want to unlink, select the check box. The Recommended Action is highlighted.
3. Select .
The **Linked Recommended Actions** window appears.
4. Select the Recommended Action that you want to unlink, and then select .
A message appears to confirm if you want to unlink the Recommended Action.
5. Select **Yes**.
The selected Recommended Action is unlinked.

Delete Recommended Actions

Procedure


1. Access the [Recommendation Actions](#) section.
2. Next to each Recommended Action that you want to delete, select the check box. The Recommended Actions are highlighted.
3. Select .
A message appears, asking if you want to delete the selection.
4. Select **OK**.
A message appears, confirming that the selection has been deleted.

Export Recommended Actions

Before You Begin

Ensure that you have Recommended Actions ready to view.

Procedure

1. [Access the Recommendation Actions page.](#)
2. Next to the Recommended Action that you want to export, select the check box.
The Recommended Action is highlighted.
3. Select .
The actions are exported to an Excel file that is automatically downloaded to your local drive.

Chapter 5

Deployment and Upgrade

Topics:

- [Deployment](#)
- [Upgrade](#)

Deployment

Deployment

Refer to the deployment information here [Deploy Recommended Actions for the First Time](#).

Upgrade

Upgrade

Refer to the upgrade information here: Upgrade Recommended Actions.

Chapter 6

Reference


Topics:

- [General Reference](#)
- [Family Field Descriptions](#)
- [Catalog Items](#)

General Reference

About State Management in Approved Action Management

Action Management employs standard State Configuration functionality to facilitate basic Action Management operations and record state transitions.

In Action Management the  menu displays a list of operations that are available for one or more currently selected records. The list of available operations will vary, depending upon the current state of the selected record and the states to which the record can transition from its current state, according to the State Configuration that exists for the entity family.

About Action States and Operations

The menu will display any operation that is valid for current state of the selected record, including any baseline operations and any custom operations.

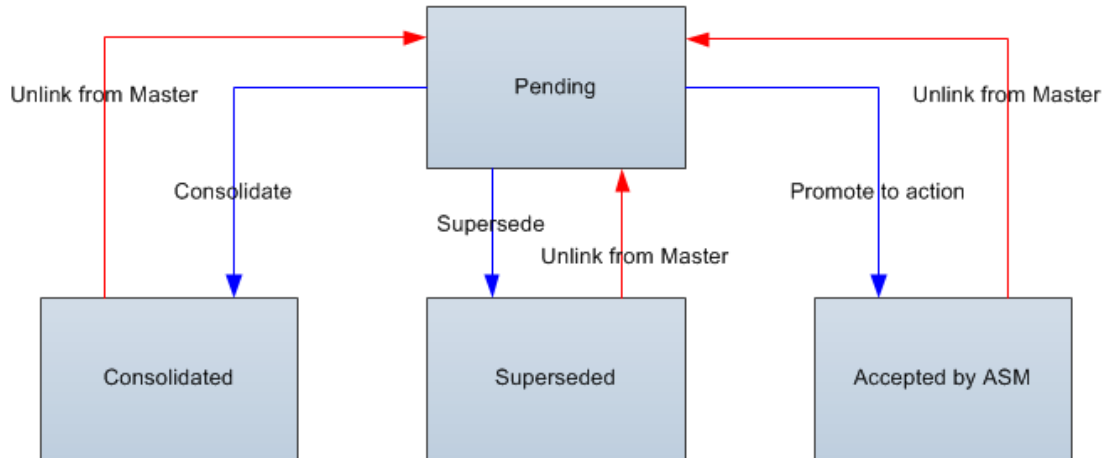
Note: Throughout this documentation, we provide details on performing baseline operations for Recommendation families using their baseline State Configurations. If you have customized the State Configurations for the Recommendation families, additional options may be available to you.

The following diagram shows the states and operations that exist in the baseline State Configuration for the following families:

- AMS Asset Recommendation
- Calibration
- Inspection
- General Recommendation
- Operator Rounds Recommendation
- Policy Recommendation
- RCA Recommendation
- Reliability Recommendation

You can use this diagram to determine which operations will appear on the recommendation menu when you select a record in the grid on the **Action Management** page. The menu will display any operation to which the current record can be transitioned from its current state.

Note: A blue arrow represents an operation that creates a link between records. A red arrow represents an operation that unlinks records.



About Asset Queries in Action Management

To identify the Equipment or Functional Location record that will be used to complete an operation, the APM system runs the following queries, which are stored in the Catalog at `\Public\Meridium\Modules\Core\Queries`:

- **Equipment Asset Query:** After providing a prompt for an Entity Key, the Equipment Asset Query returns the record with the provided Entity Key. In the baseline APM database, the query returns records in the Equipment family.
- **Location Asset Query:** After providing a prompt for an Entity Key, the Location Asset Query returns the record with the provided Entity Key. In the baseline APM database, the query returns records in the Functional Location family.

You will need to modify the baseline queries only if your Recommendation records are linked to records in a family other than the Equipment family or the Functional Location family. When you modify the queries, remember that they must contain the Entity Key field from the source family whose records you want to return. A prompt must exist on the Entity Key field, but the prompt can be a simple prompt with no valid values.

When These Queries are Run

The Equipment Asset Query and Location Asset Query are not meant to be run on their own. Instead, the APM system runs these queries when you promote a Recommendation record to an Action record.

When these queries are run, the APM system supplies the prompt with the Entity Keys of the predecessor records that are linked to the selected Recommendation record using the following workflow:

- The APM system first runs the Equipment Asset Query. If any of the predecessor Entity Keys identify a record that belongs to the source family of the Equipment Asset Query, the Asset Strategy record will be linked to the record that is returned by the query.
- If none of the predecessor Entity Keys identify a record that belongs to the source family of the Equipment Asset Query, the APM system runs the Location Asset Query. If any of the Entity Keys identify a record that belongs to the source family of this query, the Asset Strategy record will be linked to the record that is returned by this query.
- If none of the predecessor Entity Keys identify a record that belongs to the source family of the Location Asset Query, the Recommendation record will be promoted to an Action

record, but the Asset Strategy will not be linked to an Equipment or Functional Location record.

The Equipment Asset Query always runs first. If it returns a record, that record is assumed to be the correct predecessor record, and the Location Asset Query is not run. This means that if a Recommendation record is linked to an Equipment record and a Functional Location record, the Equipment record will always be assumed to be the correct predecessor record.

Both the queries should query the family at the highest level necessary to include all equipment or location subfamilies. This means that if all your customer defined equipment and location families are structured in a hierarchy under a single parent family, such as Asset, you should modify only the Equipment Asset Query to include this parent family. In this case, the Location Asset Query will never be run because all customer-defined equipment and location records will be returned by the Equipment Asset Query.

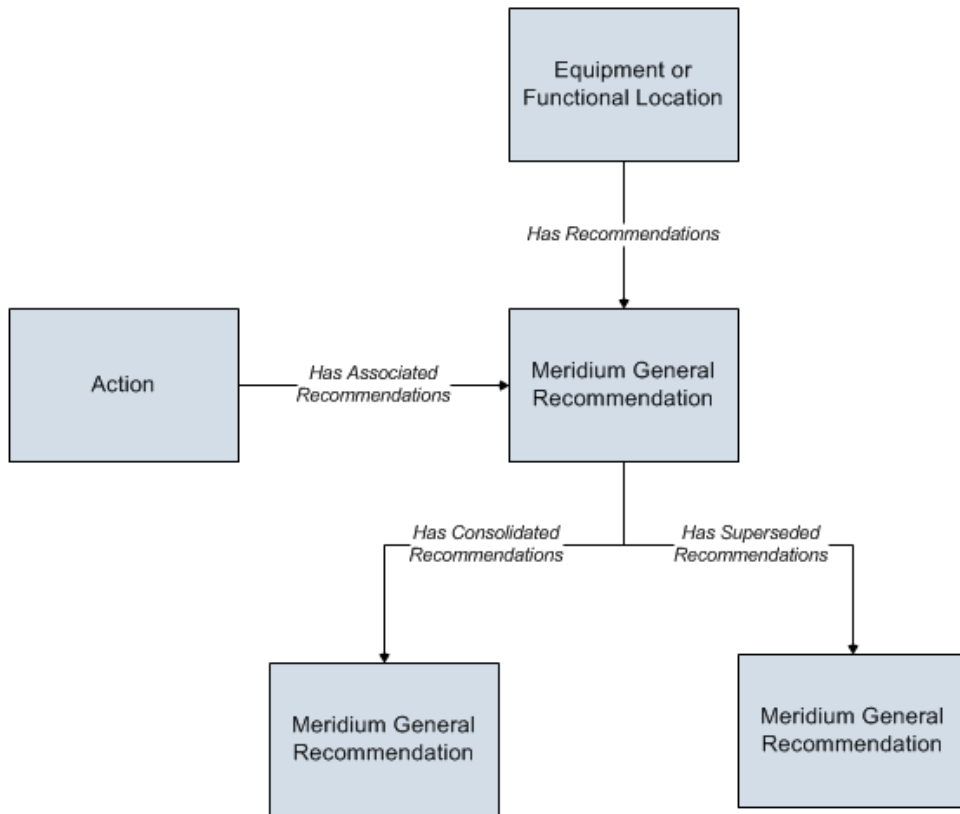
Example: Asset Query

Suppose a Recommendation record is linked to the Equipment record HX-112 and the RBI Criticality Analysis record Analysis 101. If you promote the Recommendation record to an Action record, the APM system will:

- Identify the Entity Key of the Equipment record HX-112 and the RBI Criticality Analysis record Analysis 101.
- Supply these Entity Keys to the prompt in the Equipment Asset Query.
- Identify the record that is returned by the query. Because the source family is the Equipment family, the Equipment record HX-112 will be returned by the query.
- Link the new Asset Strategy record to the Equipment record HX-112.

Recommended Actions Data Model

The following diagram illustrates the families that are provided to support Recommended Actions. The shaded boxes represent entity families, and the arrows represent relationship families. You can determine the direction of each relationship definition from the direction of the arrowhead: the box from which the arrow originates is the predecessor in that relationship definition, and the box to which the arrowhead points is the successor in that relationship definition.



Note: In this image, only the General Recommendation family is shown. Other Recommendation families (such as Inspection Recommendation) also participate in relationship definitions for these relationships, but those families are described in more detail in the documentation for the modules that use those families.

Action Management System Code Tables


The following table lists the System Code Tables that are used by Action Management.

Table ID	Table Description	Function
ENTY KEY	CORE	A unique value for any record in the database.
MI BUSINESS IMPACT	CORE, Impact to company's production carrying out equipment work	Used to populate the Business Impact list in Recommendation records.
MI PRIORITY	CORE, baseline priority types	Used to populate the Recommendation Priority list in recommendation records.

Table ID	Table Description	Function
MI RECOMMENDATION TYPE	CORE, Recommendation Type	Used to populate the Recommendation Type list in Recommendation records. Note: The Recommendation Type field is not included on any baseline Recommendation datasheets.
MI STATUS	Status Codes - CORE	Used to populate the Status list in Recommendation records.
M002	Equipment Operational Status	Used to populate the Required Equipment Status list in Recommendation records.

Action Management State Configuration

Action Management employs standard State Configuration functionality to facilitate basic Action Management operations and record state transitions.

In Action Management, the  button opens a menu that displays a list of operations that are available for one or more currently selected records. The list of available operations will vary, depending upon the current state of the selected record and the states to which the record can transition from its current state, according to the State Configuration that exists for the entity family.

About Action States and Operations

The menu will display any operation that is valid for current state of the selected record, including any baseline operations and any custom operations.

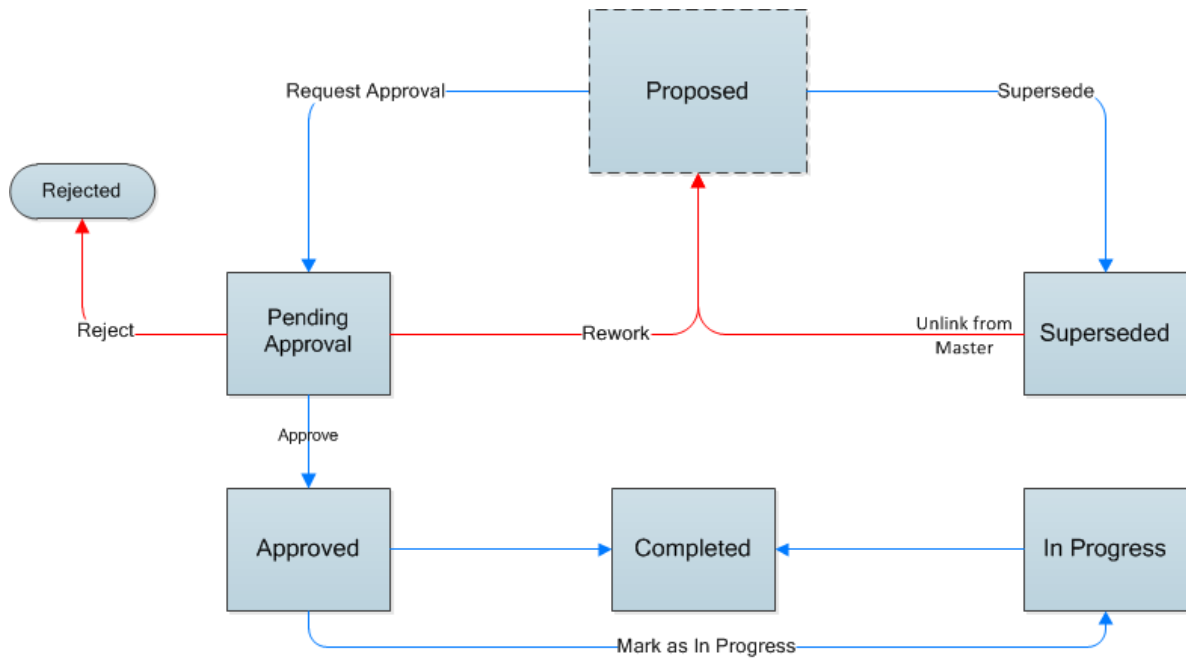
Note: Throughout this documentation, we provide details on performing baseline operations for Recommendation families using their baseline State Configurations. If you have customized the State Configurations for the Recommendation families, additional options may be available to you.

The following diagram shows the states and operations that exist in the baseline State Configuration for the following families:

- AMS Asset Recommendation
- Calibration
- Inspection
- General Recommendation
- Operator Rounds Recommendation
- Policy Recommendation
- RCA Recommendation
- Reliability Recommendation

You can use this diagram to determine which operations will appear on the Recommended Action menu when you select a record in the grid on the **Action Management** page. The Recommendation menu will display any operation to which the current record can be transitioned from its current state.

Note: A blue arrow represents an operation that creates a link between records. A red arrow represents an operation that unlinks records.



Family Field Descriptions

Recommendation Family Field Descriptions

The following table provides a list and description of some of the fields that exist in General Recommendation records and are available on the baseline General Recommendation datasheet. Most of these fields also exist in other Recommendation families and on their baseline datasheets. Regardless of the record in which you see the fields, they behave similarly to the descriptions in the table.

The following table defines how these fields behave when you create a Recommendation record from scratch using the **+** button in either the **Recommended Action** pane or the Action Management module in APM, assuming that you have not customized the behavior of the fields. In some modules that use Recommendation records, the behavior of these fields is customized to fit the needs of that module.

Some baseline Recommendation datasheets contain alert fields, which are sometimes separated into their own Alert tab. The Behavior and Usage field will specify if the field is an alert field.

If you create a Recommendation record using a module-specific workflow, there can be changes in the behavior and the number of fields from how they are described in the table. You can find details on those changes in that module's documentation.

The table lists datasheet captions, not field captions.

Field	Data Type	Description	Behavior and Usage
Alert Assignee When Due?	Boolean	Indicates whether or not you want to send an email message to the person who is responsible for implementing the Recommendation (the user that appears in the Assigned To field).	This is an alert field. To send an email to the responsible person, place a check in this box. If not, leave the box blank.
Asset ID	Character	The Record ID of the Equipment record to which the Recommendation record is linked.	This value is unique.
Assigned to Name	Character	The name that the Recommendation is assigned to.	In the database, values in this field are stored in the following format: <Last Name>, <First Name> ~ <User Name> For example, a name stored in the database would be Smith, Jane ~ jsmith.
Associated Reference	Character	Stores the Reference ID of the event or any other entity that originated the Recommendation.	This field is populated automatically by system.
Create Work Request?	Boolean	Specifies whether or not a work request should be created in an external EAM system when this record is saved (e.g., using functionality provided with the SAP Interfaces, Oracle EBS eAM Interfaces, and Maximo Interfaces).	N/A
Criticality	Character	The degree to which an asset is functionally or economically important.	This field is read-only and populated automatically by the system.
Days Before Due Date to be Notified	Numeric	Specifies how many days before the Target Completion Date that the email message will be sent. This field is required when the Alert Assignee When Due check box is selected.	This is an alert field. This field is only required if the Alert Assignee When Due box is selected.
Final Approver Name	Character	Full Name of person who approves the Recommendation.	In the database, values in this field are stored in the following format: <Last Name>, <First Name> ~ <User Name> For example, a name stored in the database would be Smith, Jane ~ jsmith.

Field	Data Type	Description	Behavior and Usage
Frequency of Alert After Due Date	Character	Specifies how often email messages will be sent after the completion date has passed. You can choose any of the following options: Never , Daily , Weekly , Monthly , or Yearly .	This is an alert field. This field is only required if there is a value in the Days Before Due Date to be Notified box has a value in it.
Functional Location ID	Character	The Record ID of the Functional Location record to which the Recommendation record is linked. -or- The Record ID of the Functional Location record that is linked to the Equipment record that appears in the Asset ID field.	N/A
Recommendation Description	Text	A short description of the Recommended Action.	N/A
Recommendation Headline	Character	A short description of the Recommended Action. If you select the Alert Assignee When Due check box, the text that you type in the Recommendation Headline field will become the subject of the email.	This field is required.
Recommendation ID	Character	A value that identifies the Recommendation record.	This field is required.
Recommendation Priority	Character	The priority of the Recommended Action. On the datasheet, this field contains a list of System Codes that exist in the MI_PRIORITY System Code Table. You can choose from the following baseline values: <ul style="list-style-type: none"> • High (HIGH) • Medium (MEDIUM) • Low (LOW) 	Enter the value from the picklist that best represents the priority of this Recommended Action.
Reevaluate?	Boolean	Indicates whether or not you want to send an email message suggesting a reevaluation of the Recommended Action.	This is an alert field. A selection is required for this field.
Reevaluation Alert Body Text	Text	The text that will be included in the re-evaluation email message.	This is an alert field. This field is required when the Reevaluate check box is selected.

Field	Data Type	Description	Behavior and Usage
Reevaluation Date	Date	The date that a reevaluation email message will be sent.	This is an alert field. This field is required when the Reevaluate check box is selected.
Reevaluation Notification List	Character	The users to whom the reevaluation email message will be sent.	This field is required when the Reevaluate check box is selected.
Related Alert	Character	The invariant alert ID for the alert related to the Recommended Action.	This field is read-only. If the field contains a value, it will contain a hyperlink to access the alert record in a new tab.
Related Case	Character	The invariant case ID for the case related to the Recommended Action.	This field is read-only. If the field contains a value, it will contain a hyperlink to access the case record in a new tab.
Reviewer Name	Character	The name of the person responsible for reviewing the Recommended Action.	In the database, values in this field are stored in the following format: <Last Name>, <First Name> ~ <User Name> For example, a name stored in the database would be Smith, Jane ~ jsmith.
State Assignee	Character	The recommendation assignee name.	This field displays the name of the person to whom the recommendation is assigned.
Status	Character	Records the status of the Recommendation as selected by the user.	This field indicates the status of the Recommended Action.
Technical Number	Numeric	The identification number provided by SAP or another Computerized Maintenance Management System (CMMS)	This field is imported into the system.
Target Completion Date	Date	The date by which the Recommendation should be completed.	This field is required.
Work Request Reference	Character	The ID of the external work request that was created from this Recommendation record (e.g., using functionality provided with the SAP Interfaces, Oracle EBS eAM Interfaces, and Maximo Interfaces). This field is disabled and populated automatically after the SAP Notification or Oracle EBS eAM Work Request is created.	N/A

Catalog Items

Queries Folder

The Catalog folder `\\Public\Meridium\Modules\Recommendation Manager\Queries` contains the following items.

Query Name	Behavior and Usage
All Performance Recommendations	Returns all Recommended Actions that are considered Performance Recommendations.
Available Recommendations	Returns all of the Recommended Actions assigned to all pieces of equipment in your company. Displays a summary of all available family field information for each Recommended Action was returned.
Task by Asset	Returns all of the Recommended Actions linked to a specific asset. Note: You must manually enter the Asset key containing the Tasks that you want to view.