



# APM System Requirements



# Contents

<b>Chapter 1: The Basic APM System</b>	<b>1</b>
Basic System Hardware and Software Requirements	2
<b>Chapter 2: APM Client</b>	<b>3</b>
Hardware Requirements	4
Software Requirements	5
<b>Chapter 3: Mobile Application</b>	<b>7</b>
Supported Operating Systems	8
<b>Chapter 4: APM Server</b>	<b>9</b>
Hardware Requirements	10
Software Requirements	10
<b>Chapter 5: APM Database Server</b>	<b>12</b>
Hardware Requirements	13
Software Requirements	13
<b>Chapter 6: SQL Server Report Server</b>	<b>14</b>
Hardware Requirements	15
Software Requirements	15
<b>Chapter 7: SQL Server Analysis Services</b>	<b>16</b>
Hardware Requirements	17
Software Requirements	17
<b>Chapter 8: Supported Software and Devices</b>	<b>18</b>
All APM Components	19

ASI for SAP	19
Calibration Management	19
APM Client Web Browser	20
Metrics and Scorecards	20
OT Connect	20
Report Designer	22
Rounds	22
R Scripts	22
Rules	23
SAP Interfaces	23
SQL Server Report Server	24
Supported Devices	24
<b>Chapter 9: Supported Languages for Translation</b>	<b>27</b>
License Requirements	28
Deploying Translations	28
<b>Chapter 10: System Requirements for Modules</b>	<b>29</b>
360 View	31
APM Connect	31
APM Foundation	31
Advanced Visualization	31
Asset Criticality Analysis	33
Asset Health Manager	33
Asset Strategy Implementation	34
Asset Strategy Management	35
Asset Strategy Optimization	35
Calibration Management	36
Compliance Management	36
eLog	37
Failure Modes and Effects Analysis (FMEA)	37
Family Policies	37
Generation Availability Analysis (GAA)	38
Generation Availability Analysis Wind (GAA Wind)	38
Hazards Analysis	39

Inspection Management	39
Life Cycle Cost Analysis	39
Layers of Protection Analysis (LOPA)	40
Management of Change (MOC)	40
Metrics and Scorecards	40
OT Connect	42
Policy Designer	43
Production Loss Analysis (PLA)	44
R Scripts	45
RBI 581	45
Recommendation Management	46
Reference Documents	46
Risk Based Inspection	46
Root Cause Analysis (RCA)	47
Rounds	47
Reliability Analytics	47
Reliability Centered Maintenance (RCM)	48
Reports	48
Rules	48
SIS Management	49
Thickness Monitoring (TM)	49
<b>Chapter 11: Administrative Features</b>	<b>51</b>
About Access to Configuration Manager Features	52
<b>Chapter 12: Support</b>	<b>54</b>
Customer Support	55

# Copyright Digital, part of GE Vernova

© 2024 GE Vernova and/or its affiliates. All rights reserved.

GE, the GE Monogram, and Predix are trademarks of General Electric Company used under trademark license.

This document may contain Confidential/Proprietary information of GE Vernova and/or its affiliates. Distribution or reproduction is prohibited without permission.

THIS DOCUMENT AND ITS CONTENTS ARE PROVIDED "AS IS," WITH NO REPRESENTATION OR WARRANTIES OF ANY KIND, WHETHER EXPRESS OR IMPLIED, INCLUDING BUT NOT LIMITED TO WARRANTIES OF DESIGN, MERCHANTABILITY, OR FITNESS FOR A PARTICULAR PURPOSE. ALL OTHER LIABILITY ARISING FROM RELIANCE UPON ANY INFORMATION CONTAINED HEREIN IS EXPRESSLY DISCLAIMED.

Access to and use of the software described in this document is conditioned on acceptance of the End User License Agreement and compliance with its terms.



# Chapter 1

---

## The Basic APM System

### Topics:

- [Basic System Hardware and Software Requirements](#)

## Basic System Hardware and Software Requirements

The basic APM system consists of machines and software that are required for any APM implementation to function. Implementation of the basic APM system gives you the foundation-level analysis tools within APM. This section of the documentation provides details on the hardware and software requirements for each machine within the basic system.

- [APM Client](#)
- [Mobile Application](#)
- [APM Server](#)
- [APM Database Server](#)
- [SQL Server Report Server](#)
- [SQL Server Analysis Services](#)
- [Supported Software and Devices](#)
- [Supported Languages for Translation](#)
- [System Requirements for Modules](#)

**Note:** For APM Connect system requirements, refer to the System Requirements topic in APM Connect documentation.

Other hardware and software may be required for a specific module or feature that is not required to deploy the basic APM system. System requirements for specific modules and features are located in the documentation for that module or feature.



# Chapter 2

---

## APM Client

### Topics:

- [Hardware Requirements](#)
- [Software Requirements](#)

# Hardware Requirements

The following hardware requirements outline the minimum hardware required for any machine or mobile device that will access the APM system. These requirements account for the APM software only. Additional hardware may be required on clients where other components are installed. These requirements may not be sufficient, depending upon how your system is configured.

## Desktops and Laptops

Minimum Requirements	Recommended Requirements for Optimal User Experience
Two Processor Cores, 2 GHz	Six Processor Cores, 2.6 GHz (for example, Intel Core i7 9750 H-High performance CPU)
4 GB RAM (16 GB RAM recommended)	32 GB RAM
8 GB of available hard drive space	512 GB Solid State Drive
13" screen	Graphics Card with 4GB of RAM (for example, Nvidia Quadro series)
1024 X 768 screen resolution	1920 X 1080 screen resolution

## Mobile Devices

You can use APM on mobile devices either in the GE Digital APM mobile application or in the web browser on the device. The following information is generic and pertains to using the application on mobile devices in either of these scenarios. For specific information regarding the mobile application, see the GE Digital APM Mobile Application portion of the Getting Started section of this documentation.

Support for mobile devices is provided in two resolution view modes: full or limited. Full-resolution view mode supports access to the entire APM system. Limited-resolution view mode supports limited access to overview pages and data collection. Resolution view mode is determined by the type of device that is used to access APM, and is not a selectable option.

**Note:** Interaction with diagramming and design canvases is not available on touch-screen devices. If needed, use a mouse peripheral to utilize this functionality.

Minimum Requirements	Devices Tested
Minimum requirements for full-resolution view mode: <ul style="list-style-type: none"> <li>• Two Processor Cores, 2 GHz</li> <li>• 2 GB RAM</li> <li>• 8 GB of available hard drive space</li> <li>• 7" screen</li> <li>• 1920 X 1200 screen resolution</li> </ul>	Devices used in the APM testing environment: <ul style="list-style-type: none"> <li>• Apple iPad 4th Generation</li> <li>• Apple iPad Air</li> <li>• Apple iPad Air 2</li> <li>• Apple iPad Mini 2</li> <li>• Apple iPad Mini 3</li> <li>• Microsoft Surface Pro 3</li> </ul>
Minimum requirements for limited-resolution view mode: <ul style="list-style-type: none"> <li>• Two Processor Cores, 1 GHz</li> <li>• 1 GB RAM</li> <li>• 8 GB of available hard drive space</li> <li>• 4" screen</li> <li>• 1024 X 600 screen resolution</li> </ul>	Devices used in the APM testing environment: <ul style="list-style-type: none"> <li>• Samsung Galaxy Tab 4 (7")</li> <li>• Samsung Galaxy Tab 4 (10")</li> </ul>

## Small Screen Devices

**Note:** You can access only the Rounds Data Collection module in portrait mode on small screen devices.

Minimum Requirements	Devices Tested
Minimum requirements: <ul style="list-style-type: none"> <li>• Four Processor Cores, 1.3 GHz</li> <li>• 1 GB RAM</li> <li>• 8 GB of available hard drive space</li> <li>• Minimum screen resolution of 320 pixels wide in portrait mode (4" or larger physical screen size recommended)</li> </ul>	Devices used in the APM testing environment: <ul style="list-style-type: none"> <li>• Lenovo A1000 (480 X 800 screen resolution)</li> </ul>

## Software Requirements

The following software components are required on any machine or device that will access the APM system using a browser. If the software meets the following requirements, you can access APM using any operating system.

One of the following browsers is required for desktops, laptops, and mobile devices:

Browser	Notes
Latest version of Google Chrome	New versions of Google Chrome are released every 4 weeks. Each version includes security updates, new features, and possible breaking changes. To ensure compatibility, we recommend that you use the latest Google Chrome version available.
Microsoft Edge	New versions of Microsoft Edge are released every 4 weeks. Each version includes security updates, new features, and possible breaking changes. To ensure compatibility, we recommend that you use the latest Microsoft Edge version available.

# Chapter 3

---

## Mobile Application

### Topics:

- [Supported Operating Systems](#)

# Supported Operating Systems

**Important:**

- Any management policy applied to mobile devices must be set up to allow the required permissions for the GE Digital APM mobile application. If restrictions are placed on iOS, Windows, or Android devices by a global policy or mobile device management system, device storage, scanning, photography, location services, and other functionality may be disabled.
- If you are using a Windows device, ensure that Windows App Store access is enabled.
- Ensure that the application is distributed to all relevant devices.

The following table lists the operating systems and corresponding versions that the GE Digital APM mobile application supports.

Operating System	Version(s) Supported
iOS	13, 14 and 15
Android	10, 11, and 12
Windows	Windows 10 (64 bit)

**Note:**

- The method used to access Reference Documents in the GE Digital APM mobile application will vary depending on your device platform. For example, on Windows and Android devices, the first time you access Reference Documents, you will be prompted to select the application in which you want to open a file, and this selection will then become the default. Apple iOS will always prompt you to select an application. On all platforms, you will also be prompted when the platform for your device does not recognize the file type that it is attempting to download.

# Chapter 4

---

## APM Server

### Topics:

- [Hardware Requirements](#)
- [Software Requirements](#)

## Hardware Requirements

The following hardware requirements outline the minimum hardware required for any computer that will serve as the APM Server. These requirements account for the APM software only. Additional hardware may be required on a APM Server machine on which other components are installed. These minimum requirements may not be sufficient, depending upon how your system is configured and the anticipated user load the system must service.

Application Server	ActiveMQ Server	ElasticSearch Server	Redis Server (Linux server)
Eight processor cores, 2+ GHz	Four processor cores, 2+ GHz	Eight processor cores, 2+ GHz	Four processor cores, 2+ GHz
24 GB RAM	16 GB RAM	24 GB RAM	16 GB RAM
100 GB of available hard drive space	100 GB of available hard drive space	100 GB of available hard drive space	100 GB of available hard drive space
7.2K RPM drive	7.2K RPM drive	7.2K RPM drive	7.2K RPM drive

## Software Requirements

The following software components are required.

- Application Server Requirements
- ActiveMQ and ElasticSearch Server Requirements
- Redis Server (Unix based) Requirements

### Application Server Requirements

The following software components are required on any machine that will serve as the APM Server. This table is intended to be used as a reference of the behavior of the APM Server and Add-ons installer as it relates to each component. In addition to the components that appear in this list, there are configuration settings that will need to be set depending upon your operating system.

A Windows Server 2016 or Windows Server 2019 operating system is required to properly run APM software, and must be installed on the machine that will serve as the APM Server. The APM testing environment uses Windows Server 2016 and Windows Server 2019.

Software Name and Version	Where You Can Obtain It	Required?	Behavior of APM Server and Add-ons Installer
IIS	Microsoft	Yes	If this is not found, an error message will appear.
Microsoft ADOMD.Net	Microsoft	Yes, if Rounds will be installed.	If this is not found, the installation will continue.



Software Name and Version	Where You Can Obtain It	Required?	Behavior of APM Server and Add-ons Installer
Microsoft Visual C++ Redistributable Package (x86) <ul style="list-style-type: none"> <li>• Microsoft Visual C++ 2015 Redistributable Package (x64)</li> <li>• Microsoft Visual C++ 2015 Redistributable Package (x86)</li> <li>• Microsoft Visual C++ 2013 Redistributable Package (x64)</li> <li>• Microsoft Visual C++ 2013 Redistributable Package (x86)</li> </ul>	APM	Yes	If this is not found, the installer will install it automatically.
ReportViewer2015	Microsoft	Yes	If this is not found, the installer will install it automatically.
requestrewrite2 module	Microsoft	Yes, if OT Connect or Advanced Visualization will be installed	If this is not found, the installation will continue.
requestRouter	Microsoft	Yes, if OT Connect or Advanced Visualization will be installed	If this is not found, the installation will continue.
WinMerge	This is a third-party component, and must be obtained from WinMerge Development.	Yes, if you will use the APM Database Comparison Tool. This tool is required if you are upgrading APM, but is not required if you are performing a first-time installation.	If this is not found, an error message will appear. However, you can continue through the installation process without installing WinMerge.

### ActiveMQ and ElasticSearch Server Requirements

The Windows Server 2016 or Windows Server 2019 operating system is required on the machine that will serve as the ActiveMQ or Elasticsearch server. The APM testing environment uses Windows Server 2016 or Windows Server 2019.

### Redis Server (Unix based) Requirements

One of the following operating systems is required on the machine that will serve as the Redis server:

- Ubuntu Server 18.04
- Ubuntu Server 20.04

The APM testing environment uses Ubuntu Server 18.04 or 20.04.

# Chapter 5

---

## APM Database Server

### Topics:

- [Hardware Requirements](#)
- [Software Requirements](#)

## Hardware Requirements

The following hardware requirements outline the minimum hardware required for any machine that will serve as the APM Database Server. These requirements account for the APM software only. Additional hardware may be required on APM Database Server machines where components other than the APM database are installed. These requirements may not be sufficient, depending upon how your system is configured.

Component	Requirement
Core	Eight Processor Cores, 2+ GHz
RAM	32 GB RAM
Hard Drive	200 GB of available hard drive space on, at a minimum, 10K RPM drives

**Note:**

- While APM supports the use of RAID 5, which has benefits in its recoverability features, APM recommends the use of RAID 10 for the best overall database performance.
- Oracle requires instance tuning to use memory cache effectively. For Oracle Database Servers, a comparable UNIX-based system can be used.
- A minimum of a 100BASE-TX switched network is required between the APM Server and the APM Database Server.

## Software Requirements

APM supports the use of an Oracle or SQL Server Database Server.

### Oracle Requirements

APM requires that you use the Enterprise Edition or Standard Edition of Oracle Server 12.1, 12.2, or Oracle 12.2.03 (19c). Oracle Locator is required in all cases. The installation of Oracle Locator depends on the successful installation of Oracle Multimedia.

**Note:** The Oracle 19c installer installs Oracle Multimedia even though it is not supported in this release.

The APM testing environment includes Oracle Server 12.1.0.1, 12.1.0.2, 12.2.0.1.0, and 12.2.0.3 (19c).

### SQL Server Requirements

APM requires that you use SQL Server 2016, SQL Server 2017, or SQL Server 2019. The APM testing environment includes SQL Server 2016 SP1, SQL Server 2017 RTM, and SQL Server 2019 RTM.

**Important:** Only access, add, or modify data related to GE Vernova products via approved GE Vernova procedures and processes. Accessing, adding, or modifying data by any other method may result in data corruption, and may void your GE Vernova product warranty. For more information, consult a member of the GE Vernova Professional Services department.

# Chapter 6

---

## SQL Server Report Server

### Topics:

- [Hardware Requirements](#)
- [Software Requirements](#)

## Hardware Requirements

The following hardware requirements outline the minimum hardware required for any machine that will serve as the SQL Server Report Server. These requirements account for the APM software only. Additional hardware may be required on a SQL Server Report Server machine where other components are installed. These requirements may not be sufficient, depending upon how your system is configured.

Component	Requirement
Core	Two Processor Cores, 2+ GHz
RAM	8 GB RAM
Hard Drive	25 GB of available hard drive space

If you are using a virtual machine (VM) to host your SQL Server Report Server, we recommend that:

- You increase the physical server CPU and hard drive space requirements by 20% to ensure that the application will perform equivalently in a virtualized environment.
- You double the physical server memory requirements.
- Each VM have its own dedicated processor cores and memory allocation to ensure appropriate performance.

APM supports Hyper-V and VMWare platforms.

These requirements may not be sufficient, depending on how your system is configured. Parameters that affect the hardware requirements include the number of users, modules purchased, database size, and other factors that can vary from one customer to another. For help refining your specific system requirements, consult a member of the APM Professional Services department.

## Software Requirements

The following software components are required on any machine that will serve as the SQL Server Report Server.

Software Name and Version	Where You Can Obtain It	Required?	Behavior of APM Server Installer
Any of the following versions of SQL Server Reporting Services: <ul style="list-style-type: none"><li>• 2019</li><li>• 2017</li><li>• 2016</li></ul>	Microsoft	Yes	If it is not available, the installation fails.

# Chapter 7

---

## SQL Server Analysis Services

Topics:

- [Hardware Requirements](#)
- [Software Requirements](#)

# Hardware Requirements

The following hardware components are the basic hardware that are required for supporting SQL Server Analysis Services in APM Metrics and Scorecards module. These requirements are specified only for the APM software. Additional hardware may be required on a SQL Server Analysis Services machine where other components are installed. These requirements may not be sufficient and may change depending upon how your system is configured.

Component	Requirement
Core	Two Processor Cores, 2+ GHz
RAM	8 GB RAM
Hard Drive	25 GB of available hard drive space

# Software Requirements

One of the following software is required on any machine that will serve as the SQL Server Analysis Services server.

Software Name and Version	Where You Can Obtain It
SQL Server Analysis Services 2014 (Multi-Dimensional mode only)	Microsoft
SQL Server Analysis Services 2016 (Multi-Dimensional mode only)	

# Chapter 8

---

## Supported Software and Devices

### Topics:

- All APM Components
- ASI for SAP
- Calibration Management
- APM Client Web Browser
- Metrics and Scorecards
- OT Connect
- Report Designer
- Rounds
- R Scripts
- Rules
- SAP Interfaces
- SQL Server Report Server
- Supported Devices



## All APM Components

Supported Third Party Components	APM V5.2.0.0.0
.NET Framework 4.7.2 and .NET Core 8.0	✓

## ASI for SAP

Supported Third Party Components	APM V5.2.0.0.0
SAP ECC 6.0 (Enhancement Packs [EhP] 1 through 8) The following SAP system versions are required to update items in SAP with changes made in ASI: <ul style="list-style-type: none"> <li>To create ASI/ASM objects in SAP and import ASI/ASM objects from SAP: SAP ECC 6.0 - Enhancement Packs (EhP) 1 -8.</li> <li>To update ASI/ASM objects in SAP:SAP ECC 6.0 - Enhancement Packs (EhP) 5 -8.</li> </ul>	✓
SAP S/4 HANA on-premises (1509, 1610, 1709, 1809, 1909, 2020, 2021, 2022)	✓

## Calibration Management

Supported Third Party Components	APM V5.2.0.0.0
CMX Calibration Management Software Version 2 (2.10.114.0)	✓
GE Device Driver 1.6.0.0	✓

## APM Client Web Browser

Supported Third Party Components	APM V5.2.0.0.0
<p>Google Chrome</p> <p>New versions of Google Chrome are released every 4 weeks. Each version includes security updates, new features, and possible breaking changes. To ensure compatibility, we recommend that you use the latest Google Chrome version available.</p>	✓
<p>Microsoft Edge</p> <p>New versions of Microsoft Edge are released every 4 weeks. Each version includes security updates, new features, and possible breaking changes. To ensure compatibility, we recommend that you use the latest Microsoft Edge version available.</p>	✓

## Metrics and Scorecards

Supported Third Party Components	APM V5.2.0.0.0
Microsoft SQL Server Analysis Services 2014	✓

## OT Connect

Supported Third Party Components	Notes	APM V5.2.0.0.0
OT Connect OPC HDA Protocol Adapter	<p>Tested internally with:</p> <ul style="list-style-type: none"> <li>OSIsoft® PI Server version 3.4.390.16 with PI OPC DA/HDA Server version 1.2.7.0.</li> <li>OSIsoft® PI HDA Server 2016, version 1.2.7.5.</li> </ul>	✓
<p>OT Connect OPC DA Protocol Adapter</p> <p><b>Note:</b> The OPC DA Protocol Adapter is available with APM V4.4.0.0.2.</p>	<p>Tested internally with:</p> <ul style="list-style-type: none"> <li>OSIsoft® PI Server version 3.4.390.16 with PI OPC DA/HDA Server version 1.2.7.0.</li> <li>OSIsoft® PI DA Server 2016, version 3.0</li> </ul>	✓

Supported Third Party Components	Notes	APM V5.2.0.0.0
OT Connect OSI PI Protocol Adapter Requires Pi AF Client 2018 SP3 Patch 2.  <b>Note:</b> The OSI PI AF available with APMV4.4.0.0.2.	Tested internally with: <ul style="list-style-type: none"> <li>• OSIssoft® PI Server 2016 Asset Framework (AF), Version 2.8.</li> </ul>	✓
OT Connect GE Historian Protocol Adapter Requires Historian 7.2+ Client Access Assembly, targeting supported historian servers 4.0 and above.  <b>Note:</b> The GE Historian Protocol Adapter is available with APMV4.4.0.0.2.	Tested internally with: <ul style="list-style-type: none"> <li>• GE Historian 7.2</li> </ul>	✓

**Note:** The above information about OPC Servers and process historians are those that have been tested for the OT Connect feature.

Other OPC Compliant servers can also leverage OT Connect successfully, as OT Connect supports the following adapters:

- OPC Foundation Historical Data Access (OPC-HDA) specification version 1.20, (AKA 1.2). The OPC HDA server offers the following capabilities:
  - LastReading
  - StartToEndReadings
  - SubscribeReadings
- OPC DA Protocol Adapter that can connect to OPC Classic DA 3.0 servers. The OPC DA server offers the following capabilities:
  - LastReading
  - SubscribeReadings
- OSI PI Protocol Adapter that can connect to PI Server 2010 and later through the Asset Framework (AF) Protocol. The OSI PI Protocol Adapter offers the following:
  - LastReading
  - SubscribeReading
  - GetStartEndReadings
  - GetBeforeEndReadings
- GE Historian Protocol Adapter that can connect to Proficy Historian 4.0 and later through the Client Access API. The GE Historian Protocol Adapter offers the following Capabilities:
  - LastReading
  - SubscribeReading
  - GetStartEndReadings
  - GetBeforeEndReadings

The OT Connect Adapter can be installed and run on the OPC Server in CHECK MODE to validate the capabilities of specific OPC Servers and process historians on a case by case basis. Refer to the deployment section for more information on the OT Connect Adapter.

**Note:**

- OT Connect does not support OPC PI Server Collectives.
- To support direct consumption of Readings into Asset Health Indicators (AHIs) and triggered Policies, the server does need to implement the End aggregate.

## Report Designer

Supported Third Party Components	Notes	APM V5.2.0.0.0
Microsoft Visual Studio 2017 Professional	None	✓
Microsoft Visual Studio 2019 Professional	None	✓
Microsoft SQL Server Data Tools - Business Intelligence for Visual Studio 2017 (15.8.0)	<ul style="list-style-type: none"> <li>• You can view a report designed using a lower version of Microsoft SQL Server Data Tools (SSDT) in a higher version of SQL Server Report Server (SSRS). However, you cannot view a report designed using a higher version of SSDT in a lower version of SSRS.</li> </ul>	✓
Microsoft SQL Server Data Tools - Business Intelligence for Visual Studio 2019	<ul style="list-style-type: none"> <li>• If you install SSDT for Microsoft Visual Studio 2019, install Microsoft Reporting Service Projects (VSIX 2.6.2). For more information on how to install Microsoft Reporting Services Projects (VSIX 2.6.2), refer to the Microsoft SSDT documentation.</li> </ul>	✓

## Rounds

APM Components	Supported Third Party Components	APM V5.2.0.0.0
Rounds (iOS, Android and Windows tablet devices)	Any operating system that meets the <a href="#">APM Client operating system requirements</a>	✓

## R Scripts

In addition to the basic APM system architecture, your system must also contain the following additional components:

- R Server: A machine on which the R Server software is installed. The software requirements of this server are determined by the third-party distributor of the software.

The APM testing environment uses the following:

- Rserve 1.8-11 with R V4.3.1 running in Docker containers on Linux servers

## Rules

Supported Third Party Components	Open Family Project	Open Relationship Project	Open Library Project	Build Projects
Microsoft Visual Studio 2022	✓	✓	✓	✓
Microsoft Visual Studio 2019 (tested with v16.11.34)	✓	✓	✓	✓
Microsoft Visual Studio 2017 (tested with v15.9.60)	✓	✓	✓	✓
MSXML	✓	✓	✓	SDK not compatible

## SAP Interfaces

Supported Third Party Components	Notes	APM V5.2.0.0.0
SAP ECC 6.0 (Enhancement Packs [EhP] 1 through 8)	None	✓
SAP S/4 HANA on-premises 2022	Support began from APM V5.0.0.0.0	✓
SAP S/4 HANA on-premises 2021	Support began from APM V4.6.0.0.0	✓
SAP S/4 HANA on-premises 2020	Support began from APM V4.6.0.0.0	✓
SAP S/4 HANA on-premises 1909	Support began from APM V4.4.0.0.0	✓
SAP S/4 HANA on-premises 1809	Support began from APM V4.3.0.7.0	✓
SAP S/4 HANA on-premises 1709	Support began from APM V4.3.0.6.0	✓
SAP S/4 HANA on-premises 1610	Support began from APM V4.3.0.1 (Foundation), V4.3.0.3 added WMI and TC.	✓
SAP S/4 HANA on-premises 1509	Support began from APM V4.3.0.1 (Foundation) V4.3.0.3 added WMI and TC.	✓

## SQL Server Report Server

Supported Third Party Components	Notes	APM V5.2.0.0.0
Microsoft SQL Server Reporting Services 2014	You can view a report designed using a lower version of Microsoft SQL Server Data Tools (SSDT) in a higher version of SQL Server Report Server (SSRS). However, you cannot view a report designed using a higher version of SSDT in a lower version of SSRS.	✓
Microsoft SQL Server Reporting Services 2016		✓
Microsoft SQL Server Reporting Services 2017		✓
Microsoft SQL Server Reporting Services 2019		✓

## Supported Devices

### Important:

Any management policy applied to mobile devices must be set up to allow the required permissions for the GE Digital APM mobile application. If restrictions are placed on iOS, Android, or Windows devices by a global policy or mobile device management system, then device storage, scanning, photography, location services, and other functionality may be disabled.

If you are using a Windows device, ensure that Windows App Store access is enabled.

## Calibration Management Devices

Device	V5.2.0.0.0
Fluke 74x Documenting Process Calibrator	✓
Fluke 75x Documenting Process Calibrator	✓
Fluke 729 Automatic Pressure Calibrator	✓
GE Druck Calibrators: <ul style="list-style-type: none"> <li>• Druck DPI611 - Pressure Calibrator</li> <li>• Druck DPI612 - Flex Pressure Calibrator</li> <li>• Druck DPI620 - Multifunction Calibrator</li> <li>• Druck DPI620-IS - Intrinsically Safe Multifunction Calibrator</li> <li>• Druck DPI620G – Advanced Multifunction Calibrator, HART/Fieldbus Communicator</li> <li>• Druck DPI620G-IS - Intrinsically Safe Advanced Multifunction Calibrator, HART/Fieldbus Communicator</li> </ul>	✓

\*Calibration Management use the Devices Interface, which is a UI that is configured to support the transfer of data between APM and devices that APM supports.

## Rounds Devices

Device	Notes	V5.2.0.0.0
Android, iOS, or Windows tablets that meets the <a href="#">APM Client requirements</a> .	None	✓
<b>Barcode Functionality</b>		
Device cameras for Android, iOS, and Windows tablets	This feature is available only when using the GE Digital APM mobile application.	✓
Zebra TC-75X Touch Computer Integrated Barcode Scanner	Devices used in the APM testing environment: <ul style="list-style-type: none"> <li>Zebra TC-75X Touch Computer (DataWedge version 6.4 or higher)</li> </ul>	✓
<b>RFID Functionality</b>		
Zebra TC-75X Touch Computer NFC RFID reader	Device used in the APM testing environment: <ul style="list-style-type: none"> <li>Zebra TC-75X Touch Computer (DataWedge version 6.4 or higher)</li> </ul>	✓
<b>NFC Functionality</b>		
Ecom - Smart-Ex 02 ROW DZ1	Device used in the APM testing environment: <ul style="list-style-type: none"> <li>Ecom - Smart-Ex 02 ROW DZ1 Android Version 11 only, Android Version 12 and above are not supported.</li> </ul>	

## Rounds Pro Devices

Device	Notes	V5.2.0.0.0
Android, iOS, or Windows tablets that meets the <a href="#">APM Client requirements</a> .	None	✓

## Thickness Monitoring Supported Devices

Device	APM V5.2.0.0.0
GE DMS Go	✓
GE DMS Go+	✓
GE DMS2	✓

Device	APM V5.2.0.0.0
Olympus (Panametrics) 37DL Plus Ultrasonic Thickness Gage	✓
Olympus (Panametrics) 38DL Plus Ultrasonic Thickness Gage	✓

\* Thickness Monitoring use the Devices Interface, which is a UI that is configured to support the transfer of data between APM and devices that APM supports.



# Chapter 9

---

## Supported Languages for Translation

Topics:

- [License Requirements](#)
- [Deploying Translations](#)

## License Requirements

Each language for translation available in the APM system is enabled by activating a specific license. Licenses for language translation are named Language-<Supported Language>, where <Supported Language> is the name of a supported language. The following languages are supported:

- English
- Spanish
- Japanese
- Simplified Chinese
- Russian
- Portuguese
- German
- French
- Dutch
- Italian
- Polish
- Korean

## Deploying Translations

To activate licenses for language translation, consult the Activate Licenses section of the documentation.

# Chapter 10

---

## System Requirements for Modules

### Topics:

- 360 View System Requirements
- APM Connect System Requirements
- APM Foundation System Requirements
- Advanced Visualization
- Asset Criticality Analysis (ACA) System Requirements
- Asset Health Manager (AHM) System Requirements
- Asset Strategy Implementation (ASI) System Requirements
- Asset Strategy Management (ASM) System Requirements
- Asset Strategy Optimization (ASO) System Requirements
- Calibration Management System Requirements
- Compliance Management System Requirements
- eLog System Requirements
- Failure Modes and Effects Analysis (FMEA) System Requirements
- Family Policy System Requirements
- Generation Availability Analysis (GAA) System Requirements
- Generation Availability Analysis Wind (GAA Wind) System Requirements
- Hazards Analysis System Requirements

- Inspection Management System Requirements
- Life Cycle Cost Analysis System Requirements
- Layers of Protection Analysis (LOPA) System Requirements
- Management of Change (MOC) System Requirements
- Metrics and Scorecards System Requirements
- OT Connect System Requirements
- Policy Designer System Requirements
- Production Loss Analysis (PLA) System Requirements
- R Scripts System Requirements
- RBI 581 System Requirements
- Recommendation Management System Requirements
- Reference Documents System Requirements
- Risk Based Inspection (RBI) System Requirements
- Root Cause Analysis (RCA) System Requirements
- Rounds System Requirements
- Reliability Analytics System Requirements
- Reliability Centered Maintenance (RCM) System Requirements
- Reports System Requirements
- Rules System Requirements
- SIS Management System Requirements
- Thickness Monitoring (TM) System Requirements

## 360 View System Requirements

### License Requirements

This feature is available in the APM application; no specific license is required.

### Additional Components Required

Only the basic APM system architecture is required for this feature to work correctly. No additional components are required.

## APM Connect System Requirements

For information on system requirements for APM Connect, refer to the APM Connect documentation.

## APM Foundation System Requirements

### License Requirements

This feature is available with the core APM application; no specific license is required.

### Additional Components Required

Only the basic APM system architecture is required for this feature to work correctly. No additional components are required.

### Deploying APM Foundation

APM Foundation comprises the foundation-level analysis tools that are available after you have installed and configured the basic APM system architecture.

## Advanced Visualization

### Hardware Requirements

The following hardware requirements outline the minimum hardware required for any computer that will be set up for the Advanced Visualization module. These minimum requirements may not be sufficient, depending upon how your system is configured and the anticipated user load the system must service.

**Table 1: Hardware Requirements**

Component	
Core	4-core processor, 2.5 GHz minimum per core 8-core processors are recommended for optimal performance
RAM	16 GB RAM or higher for optimal performance
Hard Drive	40 GB of free disk space

**Software Requirements**

The following software is required on any machine that will be set up for Advanced Visualization.

**Table 2: Server Details**

Software Name and Version	Where you can obtain it
Windows Server 2012 (64-bit) -or- Windows Server 2016 (64-bit) -or- Windows Server 2019 (64-bit)	Microsoft

**Table 3: Browser Details**

Browser	Notes
Google Chrome -or- Mozilla Firefox -or- Microsoft Edge Windows Server 2012 (64-bit)	For recommended browser versions, refer to the <a href="https://kb.informationbuilders.com/topic/webfocus-8207-browser-information">https://kb.informationbuilders.com/topic/webfocus-8207-browser-information</a> .

**Network Requirements**

The following ports are required by Advanced Visualization and must be open on the machine that will be set up for Advanced Visualization.

**Table 4: Port Details**

Port	Use
80	Advanced Visualization UI
8080	Webfocus client
8120	Webfocus Reporting Server

Port	Use
9090	Advanced Visualization MS
9006	Advanced Visualization UI. This port is required only if Advanced Visualization is installed on the same machine as APM

## Asset Criticality Analysis (ACA) System Requirements

### License Requirements

This feature is available in the APM application with the Meridium Core license; no specific license is required.

ACA integration with SAP is only available in on-premises releases.

To update your SAP system to reflect the criticality value that is determined in ACA, the licenses SAP Interfaces – Foundation and SAP Interfaces - Criticality Assessment are also required.

**Note:** For supported SAP releases, see the SAP System Requirements section in [APM Connect System Requirements](#).

### Additional Components Required

Only the basic APM system architecture is required for this feature to work correctly. No additional components are required.

### Deploying Asset Criticality Analysis

After you have installed and configured the basic APM system architecture, you will need to perform some configuration steps specifically for Asset Criticality Analysis.

## Asset Health Manager (AHM) System Requirements

### License Requirements

The Asset Health license and the licenses for the modules that you want to use with AHM are required to take advantage of AHM functionality.

### Additional Components Required

When you install the APM Server, the Asset Health Indicator Service is installed automatically. In order for the Asset Health Indicator Service to function as described within this documentation, you must start the Asset Health Indicator Service. After you do so, the Asset Health Indicator Service will allow the health indicator status values to be updated automatically.

In addition, Asset Health Manager can be used to its complete potential only when it is integrated with one or more of the following modules:

- Rounds
- Asset Strategy Management
- Policy Designer
- Metrics and Scorecards

Your system must also meet the system requirements for any of these additional modules that you plan to use with Asset Health Manager.

### Deploying Asset Health Manager

After you have installed and configured the basic APM system architecture, you will need to perform some configuration steps specifically for Asset Health Manager.

If you want to use Asset Health Manager with Process Data Integration and [Policy Designer](#), you must also configure and start the services associated with these modules.

## Asset Strategy Implementation (ASI) System Requirements

### License Requirements

The following licenses are required to take full advantage of ASI functionality:

- Asset Strategy Management
- SAP Content for ASI

### SAP System Requirements

The following SAP system versions are required to update items in SAP with changes made in ASI:

- **To create ASI/ASM objects in SAP and import ASI/ASM objects from SAP:** SAP ECC 6.0 - Enhancement Packs (EhP) 1 and above.
- **To update ASI/ASM objects in SAP:** SAP ECC 6.0 - Enhancement Packs (EhP) 5 and above.

**Note:** For supported SAP releases, see the SAP System Requirements section in APM Connect System Requirements.

### Additional Components Required

In addition to the basic APM system architecture, your system must also contain the following additional components:

- **The Asset Strategy Management (ASM) module.** ASI allows you to build Implementation Packages, which are containers of records that dictate the work that you want to perform and the Asset Strategies that contain the original work requests (i.e., Action Revision records). Asset Strategies are created in ASM.
- **An SAP System.** The connectivity to SAP is required only if you want to create items such as Maintenance Plans, Maintenance Items, and Task Lists from ASI. To take full advantage of the ASI module, we recommend that you integrate ASI with SAP.

### Deploying Asset Strategy Implementation

After you have installed and configured the basic APM system architecture, you will need to perform some configuration steps specifically for Asset Strategy Implementation.



# Asset Strategy Management (ASM) System Requirements

## License Requirements

A limited version of the ASM module is available with the Meridium Core license. To experience ASM with full functionality, an Asset Strategy Management license is required.

## Additional Components Required

In addition to the basic APM system architecture, your system must also contain the following additional components if you wish to use Asset Strategy Implementation to manage actions that are implemented in an SAP system:

- The Asset Strategy Implementation (ASI) module. ASI allows you to build Implementation Packages, which are containers of records that dictate the work that you want to perform and the Asset Strategies that contain the original work requests.

**Note:** For supported SAP releases, see the SAP System Requirements section in [APM Connect System Requirements](#).

## Deploying Asset Strategy Management

After you have installed and configured the basic APM system architecture, you will need to perform some configuration steps specifically for Asset Strategy Management.

# Asset Strategy Optimization (ASO) System Requirements

## License Requirements

The following licenses are required to take full advantage of ASO functionality:

- Asset Strategy Management
- Asset Strategy Optimization

## Additional Components Required

In addition to the basic APM system architecture, your system must also contain the following additional components:

- The Asset Strategy Management (ASM) module: ASO allows you to optimize Asset Strategies by running data simulations on existing Asset Strategies. Asset Strategies are created in ASM.

## Deploying Asset Strategy Optimization

After you have installed and configured the basic APM system architecture, you will need to perform some configuration steps specifically for Asset Strategy Optimization.

# Calibration Management System Requirements

## License Requirements

The Calibration license is required to take advantage of the Calibration Management functionality.

## Additional Components Required

If you use a documenting process calibrator or other calibration management software to perform automated calibration, then the machine that will connect to that calibrator must have the APM Devices service installed.

These devices may require additional drivers provided by the manufacturer.

The following documenting process calibrator devices are supported:

- Fluke 74x Documenting Process Calibrator
- Fluke 75x Documenting Process Calibrator
- GE Druck Calibrators:
  - Druck DPI611 - Pressure Calibrator
  - Druck DPI612 - Flex Pressure Calibrator
  - Druck DPI620 - Multifunction Calibrator
  - Druck DPI620-IS - Intrinsically Safe Multifunction Calibrator
  - Druck DPI620G - Advanced Multifunction Calibrator, HART/Fieldbus Communicator
  - Druck DPI620G-IS - Intrinsically Safe Advanced Multifunction Calibrator, HART/Fieldbus Communicator

The following Calibration Management software is supported:

- CMX Calibration Management Software Version 2 (2.10.114.0)

To establish communication with the CMX Calibration Management software, in addition to APM Device services, you must install the following software:

- Beamex Business Bridge (B3) Version 1 (1.2.0)

## Deploying Calibration Management

After you have installed and configured the basic APM system architecture, you will need to perform some configuration steps specifically for Calibration Management.

# Compliance Management System Requirements

## License Requirements

The Compliance Management, Inspection Management, and Policy Designer licenses are required to take advantage of the Compliance Management functionality.

## Additional Components Required

You must ensure that the following licenses are active:

- [Inspection Management](#)

- [Policy Designer](#)

## eLog System Requirements

### License Requirements

The eLog license is required to take advantage of the eLog functionality.

### Additional Components Required

If you want to create GAA Primary Events from eLog, you must ensure that the [license for Generation Availability Analysis \(GAA\)](#) is active.

### Deploying eLog

After you have installed and configured the basic APM system architecture, you will need to perform some configuration steps specifically for eLog.

## Failure Modes and Effects Analysis (FMEA) System Requirements

### License Requirements

The RCM license is required to take advantage of FMEA functionality.

### Additional Components Required

Only the basic APM system architecture is required for this feature to work correctly. No additional components are required.

### Deploying Failure Modes and Effects Analysis (FMEA)

After you have installed and configured the basic APM system architecture, you will need to perform some configuration steps specifically for Failure Modes and Effects Analysis (FMEA).

## Family Policy System Requirements

### License Requirements

The Family Policy license is required to take full advantage of Family Policy functionality.

**Note:** The availability of certain features in Family Policy depends on the associated APM licenses. For example, you can access the Add Value to Health Indicator node only if the Asset Health license is active in APM. For more information on the licenses required for each node, refer to the family policy reference documentation.

### Additional Components Required

Only the basic APM system architecture is required for this feature to work correctly. No additional components are required.

# Generation Availability Analysis (GAA) System Requirements

## License Requirements

The Generation Availability Analysis license is required to take advantage of the Generation Availability Analysis functionality.

## Additional Components Required

In addition to the basic APM system architecture, your system must also contain the following additional components:

- The GAA module utilizes R script functionality. Therefore, your system must also meet the system requirements for [R scripts](#).
- If you want to access and create a Root Cause Analysis (RCA) from GAA, you must ensure that the [license for Root Cause Analysis](#) is active.
- If you want to access and create an eLog entry from GAA, you must ensure that the [license for eLog](#) is active.
- If you want to access the **Health Summary** page for an asset, you must ensure that the license for Asset Health Manager is active and that you have the appropriate Security User permissions.

## Deploying Generation Availability Analysis

After you have installed and configured the basic APM system architecture, you will need to perform some configuration steps specifically for Generation Availability Analysis.

# Generation Availability Analysis Wind (GAA Wind) System Requirements

## License Requirements

The GAA Wind license is required to take advantage of the GAA Wind functionality.

## Additional Components Required

Only the basic APM system architecture is required for this feature to work correctly. No additional components are required.

## Deploying GAA Wind

After you have installed and configured the basic system architecture, you will need to perform some configuration steps specifically for GAA Wind.

## Hazards Analysis System Requirements

### License Requirements

The Hazards Analysis license is required to take advantage of the Hazards Analysis functionality. This license is also required to use the integration between Hazards Analysis and Layers of Protection Analysis (LOPA).

To use the integration between Hazards Analysis and SIS Management, the SIS Management license is also required.

### Additional Components Required

Only the basic APM system architecture is required for this feature to work correctly. No additional components are required.

### Deploying Hazards Analysis

After you have installed and configured the basic APM system architecture, you will need to perform some configuration steps specifically for Hazards Analysis.

## Inspection Management System Requirements

### License Requirements

The Inspection license is required to take advantage of Inspection Management functionality.

For organizations with sites located in Brazil, APM provides expanded inspection functionality to support the inspection requirements of NR-13. To take advantage of this functionality, the NR13 license is required.

### Additional Components Required

Only the basic APM system architecture is required for this feature to work correctly. No additional components are required.

### Deploying Inspection Management

After you have installed and configured the basic APM system architecture, you will need to perform some configuration steps specifically for Inspection Management.

## Life Cycle Cost Analysis System Requirements

### License Requirements

The Life Cycle Cost Analysis (LCC) license is required to take advantage of the Life Cycle Cost Analysis functionality.

### Additional Components Required

If you want to:

- Import Production Event costs from PLA, the [license for Production Loss Analysis](#) is required.

### **Deploying Life Cycle Cost Analysis**

After you have installed and configured the basic APM system architecture, you will need to perform some configuration steps specifically for Life Cycle Cost Analysis.

## **Layers of Protection Analysis (LOPA) System Requirements**

### **License Requirements**

The Hazards Analysis license is required to use the integration between LOPA and Hazards Analysis.

The SIS Management license is required to use the integration between LOPA and SIS Management.

### **Additional Components Required**

Only the basic APM system architecture is required for this feature to work correctly. No additional components are required.

### **Deploying Layers of Protection Analysis (LOPA)**

After you have installed and configured the basic APM system architecture, you will need to perform some configuration steps specifically for Layers of Protection Analysis (LOPA).

## **Management of Change (MOC) System Requirements**

### **License Requirements**

The MOC license is required to take advantage of the Management of Change functionality.

### **Additional Components Required**

Only the basic APM system architecture is required for this feature to work correctly. No additional components are required.

### **Deploying Management of Change**

After you have installed and configured the basic APM system architecture, you will need to perform some configuration steps specifically for Management of Change.

## **Metrics and Scorecards System Requirements**

### **License Requirements**

The Metrics Manager license is required to use the Metrics and Scorecards module.

### **Additional Components Required**

In addition to the basic APM system architecture, your system must also contain the following additional components:

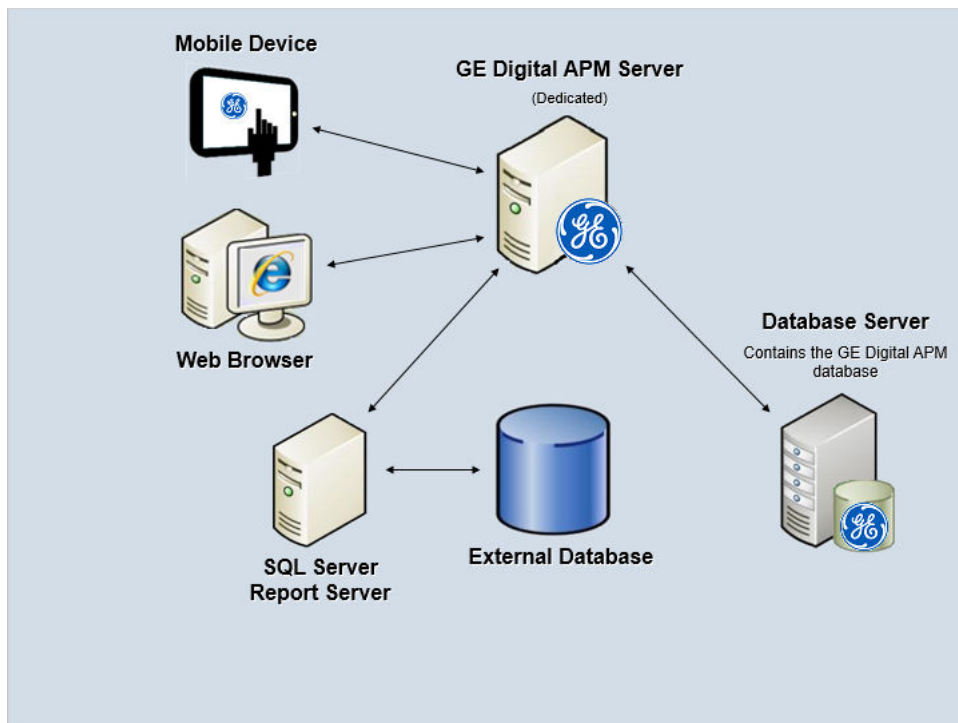
- A SQL Server Analysis Services Server machine that will host the Microsoft SQL Server Analysis Services software. The following versions of SQL Server Analysis Services are supported in this version of APM:
  - Microsoft SQL Server Analysis Services 2016
- If you are using an Oracle database, to process the Work History cube, you must install ODP.NET (Oracle Data Provider.NET), an Oracle Data Access Component, on the machine where the Work History cube is deployed.

## System Architecture

Microsoft SQL Server Analysis Services provides the ability to analyze large amounts of data quickly and easily. Analysis Services provides the means to access warehouses of data by letting you create dimensional cubes from information in the database and dimension tables. Numeric measures can be summed into pre-aggregated values while cubes are being created. Cubes can contain data that is summarized, copied, or read directly from the data warehouse. Cubes, dimensions, and partitions can be processed (that is, updated) to incorporate new or changed data from the data warehouse. Time, location, equipment type, or sizes are common dimensions against which measures are calculated and displayed in APM. The data warehouse can be created as a separate database, combining information from APM and other data sources. Alternatively, dimensional cubes can be created by accessing the APM database directly.

Together, Microsoft SQL Server Analysis Services and the Metrics and Scorecards module functionality provide APM users with the ability to analyze data in the APM database using the features of Analysis Services through the APM interface. To use the Metrics and Scorecards functionality, you must incorporate SQL Server Analysis Services into your APM system.

If you choose to implement the Metrics and Scorecards module within your system, we recommend using a configuration in which the Analysis Server exists on a machine that is separate from the APM Server. This deployment scenario most accurately reflects the APM testing environment. The following illustration shows how the SQL Server Analysis Services Server connects to the basic APM System architecture.



**Note:** While this image shows only a single, dedicated APM Server, your implementation may contain one or more of these machines. The purpose of this image is to depict the interaction of the SQL Server Analysis Server with the basic APM components, not to provide details on the basic components themselves. While your APM system may contain multiple dedicated APM Servers, it will contain only a single SQL Server Analysis Server that all APM Servers will access.

### Deploying Metrics and Scorecards

After you have installed and configured the basic APM system architecture, you need to perform some configuration steps specifically for Metrics and Scorecards.

## OT Connect System Requirements

### License Requirements

The APM OT Connect license is required to take full advantage of the OT Connect functionality.

**Note:** If you are upgrading from a 4.x version which is running PDI to use OT Connect, you must also activate the OPC Interfaces licenses.

### Additional Components Required

In addition to the basic APM system architecture, your system must also contain the following components:

- OT Connect Conductor service must be installed on the APM Server.
- OT Connect Process Data Server: A machine on which the OPC compliant software is installed. The software requirements of this server are determined by the third-party distributor of the software. OT Connect Adapter must be installed on the OT Connect Process Data Server.
- Process Historian: A machine on which the process historian software is installed. The software requirements of this machine are determined by the third-party distributor of the software.

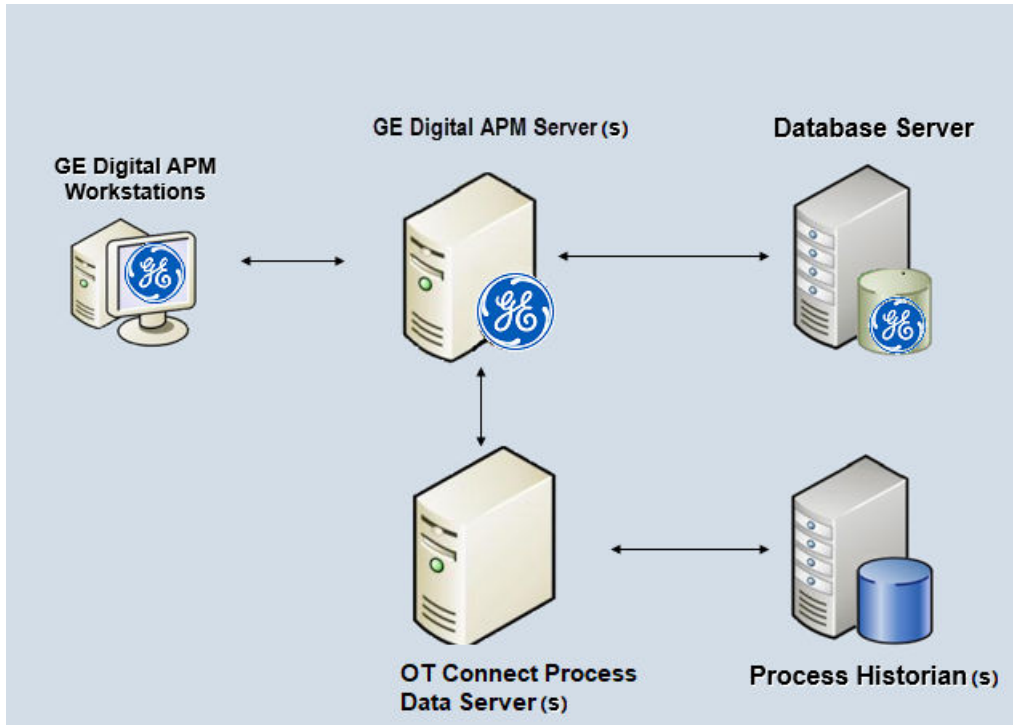
**Important:** OT Connect supports the OPC Foundation Historical Data Access (OPC-HDA) specification version 1.20. To support direct consumption of readings by Asset Health indicators and triggered policies, the server must implement the End aggregate or preferably use the OT Connect OPC DA Protocol Adapter for the Data Access data.

Refer to the supported software and devices documentation for information about OT Connect Process Data Servers and Process Historians that are tested for the OT Connect feature. The OT Connect Adapter can be installed and run on the OT Connect Process Data Server in OT Source Capability Utility mode to validate the capabilities of specific OT Connect Process Data Servers and process historians on a case-by-case basis. Refer to the deployment section for more information on the OT Connect Adapter.

### System Architecture

The following image shows the basic system architecture for deploying OT Connect with one APM Server.





**Note:** While this image shows only a single, dedicated APM Server along with all the list of the components, your implementation may contain one or more of these machines. The purpose of this image is to depict the interaction of the OT Connect Process Data Server with the basic APM components, not to provide details on the basic components themselves. While your APM system may contain multiple dedicated APM Servers, it can interact with multiple OT Connect Process Data servers for different historians.

### Deploying OT Connect

After you have installed and configured the basic APM system architecture, you must perform some [configuration steps specifically for OT Connect](#).

If you want to use OT Connect with [Asset Health Manager](#) and [Policy Designer](#), you must also configure the services associated with these modules.

## Policy Designer System Requirements

### License Requirements

The Policy Designer license is required to take full advantage of Policy Designer functionality.

This license is not required for the module workflow policies to operate; however, if you want to modify a module workflow policy, the Policy Designer license is required. You do not need the Policy Designer license to view module workflow policies for modules for which you have a license.

**Note:** The availability of certain features in Policy Designer depends on the associated APM licenses. For example, you can access the Add Value to Health Indicator node only if the Asset Health license is active in APM. For more information on the licenses required for each node, refer to the policy designer reference documentation.

## Additional Components Required

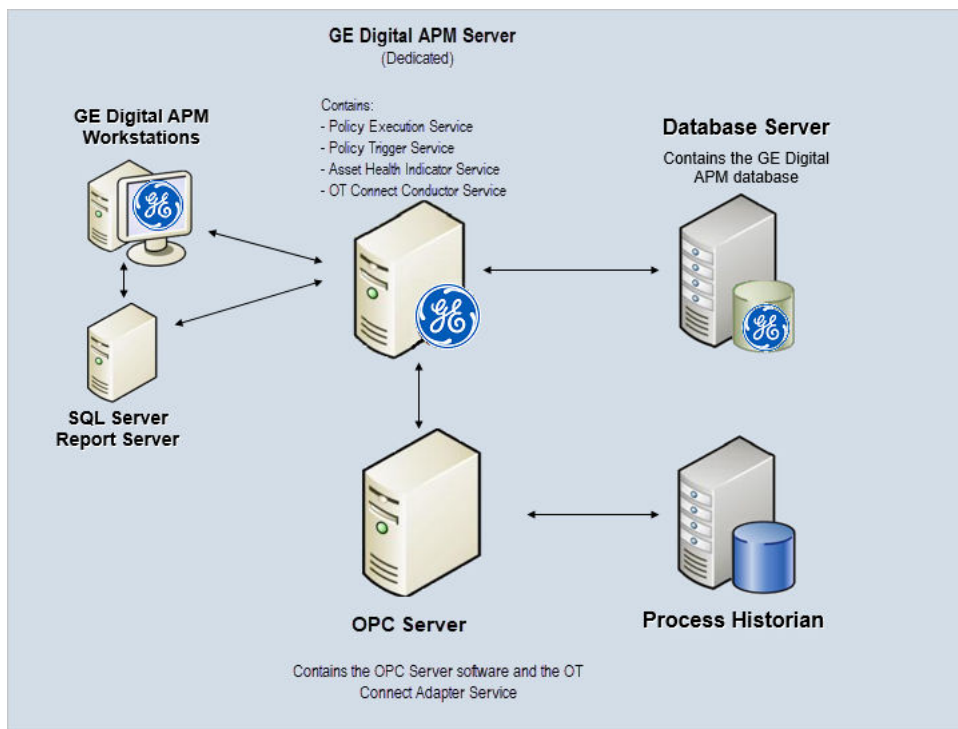
When you install the APM Server, the Policy Execution Service and Policy Trigger Service are installed automatically. In order to execute policies, you must configure these services on the appropriate machines.

**Note:** Depending on the number of policies that you need to manage in your system, you may have multiple APM Servers to process policy executions. In this case, you can configure your APM System Architecture according to your company's preference for server load-balancing.

Your system must also meet the system requirements for any additional modules that you plan to use with Policy Designer.

## System Architecture

The following image shows the basic system architecture for deploying Policy Designer with one APM Server that processes policy executions.



## Deploying Policy Designer

After you have installed and configured the basic APM system architecture, you will need to perform some configuration steps specifically for Policy Designer.

If you want to use Policy Designer with OT Connect and [Asset Health Manager](#), you must also configure the services associated with these modules.

# Production Loss Analysis (PLA) System Requirements

## License Requirements

The Production Loss Accounting license is required to take advantage of PLA functionality.

If you want to:

- Access and create a Root Cause Analysis (RCA) from PLA, you will need to make sure that the [license for Root Cause Analysis](#) is active.
- Access and create a Production Analysis from PLA, you will need to make sure that the [license for Reliability Analytics](#) is active.

### Deploying Production Loss Analysis

After you have installed and configured the basic APM system architecture, you will need to perform some configuration steps specifically for Production Loss Analysis.

## R Scripts System Requirements

### License Requirements

This feature is available with the core APM application; no specific license is required.

### Additional Components Required

In addition to the basic APM system architecture, your system must also contain the following additional components:

- R Server: A machine on which the R Server software is installed. The software requirements of this server are determined by the third-party distributor of the software.

The APM testing environment uses the following:

- Rserve 1.8-11 with R V4.3.1 running in Docker containers on Linux servers

### Deploying R Scripts

After you have installed and configured the basic APM system architecture, you will need to perform some configuration steps specifically for R Scripts.

## RBI 581 System Requirements

### License Requirements

The RBI 581 license is required to take advantage of RBI 581 functionality.

### Note:

Because the RBI 581 and RBI modules share the same user interface, if you only have the RBI 581 license, various features normally available with the Risk Based Inspection license will be disabled. The following list indicates which features normally available with Risk Based Inspection are disabled.

If you only have the RBI 581 license:

- An RBI 580 license is required to use RBI Criticality Analyses, RBI Pipeline Analyses, and RBI PRD Criticality Analyses.
- On the **Risk Based Inspection Overview** page:
  - **Generate Recommendations** is disabled.
  - The **Current Risk Overview** and **Past Risk Overview** charts will plot the risk ranks for RBI 580 Criticality Analyses, RBI PRD Criticality Analyses, and RBI Pipeline Analyses.

- The **Current Risk** and **Past Risk** widgets will list RBI 580 Criticality Analyses, RBI PRD Criticality Analyses, and RBI Pipeline Analyses.
- In the **Asset Summary** workspace:
  - The Asset Summary and Asset Risk Reports are disabled.

### Deploying RBI 581

After you have installed and configured the basic APM system architecture, you will need to perform some configuration steps specifically for RBI 581.

## Recommendation Management System Requirements

### License Requirements

The Meridium Core license is required to take advantage of the Recommendation Management functionality.

## Reference Documents System Requirements

### License Requirements

This feature is available with the core APM application; no specific license is required.

## Risk Based Inspection (RBI) System Requirements

### License Requirements

The Risk Based Inspection license is required to take advantage of RBI functionality.

**Important:** If you want to configure the RBI 580 calculations, the Policy Designer license is also required.

### Note:

Because the RBI 581 and RBI modules share the same user interface, if you have only the Risk Based Inspection license, various features normally available with the RBI 581 license will be disabled. Specifically:

- An RBI 581 license is required to use RBI 581 Risk Analyses.
- The RBI 581 ISO Risk Plot feature is not available.
- On the **RBI Admin Preferences** page, the **RBI 581 Admin Options**, **RBI 581 ISO-Risk Plot Preferences**, **Inspection Auto-Selection**, and **RBI 581 Inventory Groups** workspaces are not available.

### Additional License

- If you are planning to use Flexible RBI Methodology, the Policy Designer license is also required.
- If you want to take advantage of the extended RBI functionality for pipelines, the Pipeline Management license is also required.

### **Additional Components Required**

Only the basic APM system architecture is required for this feature to work correctly. No additional components are required.

### **Deploying Risk Based Inspection**

After you have installed and configured the basic APM system architecture, you will need to perform some configuration steps specifically for Risk Based Inspection.

## **Root Cause Analysis (RCA) System Requirements**

### **License Requirements**

The PROACT license is required to take advantage of RCA functionality.

### **Additional Components Required**

Only the basic APM system architecture is required for this feature to work correctly. No additional components are required.

### **Deploying Root Cause Analysis**

After you have installed and configured the basic APM system architecture, you will need to perform some configuration steps specifically for Root Cause Analysis.

## **Rounds System Requirements**

### **System Requirements**

The Operator Rounds license and the Lubrication Management license are required to take advantage of the Rounds functionality (i.e., Rounds Designer and Rounds Data Collection modules).

### **Additional Components Required**

Refer to the [supported software and devices](#) documentation for information about the software and hardware requirements for devices you can use for data collection in Rounds.

## **Reliability Analytics System Requirements**

### **License Requirements**

The Reliability Manager license is required to take advantage of Reliability Analytics functionality.

### **Additional Components Required**

Only the basic APM system architecture is required for this feature to work correctly. No additional components are required.

### Deploying Reliability Analytics

After you have installed and configured the basic APM system architecture, you will need to perform some configuration steps specifically for Reliability Analytics.

## Reliability Centered Maintenance (RCM) System Requirements

### License Requirements

The RCM license is required to take advantage of RCM functionality.

### Additional Components Required

Only the basic APM system architecture is required for this feature to work correctly. No additional components are required.

### Deploying Reliability Centered Maintenance

After you have installed and configured the basic APM system architecture, you will need to perform some configuration steps specifically for Reliability Centered Maintenance.

## Reports System Requirements

### License Requirements

This feature is available with the core APM application; no specific license is required.

### Additional Components Required

In addition to the basic APM system architecture, your system must also contain the following additional components:

- Microsoft Visual Studio 2017 Professional and Microsoft SQL Server Data Tools - Business Intelligence for Microsoft Visual Studio 2017 (15.8.0).  
or  
Microsoft Visual Studio 2019 Professional and Microsoft SQL Server Data Tools - Business Intelligence for Microsoft Visual Studio 2019.
- **Note:** If you install SSDT for Microsoft Visual Studio 2019, install Microsoft Reporting Service Projects (VSIX 2.6.2). For more information on how to install Microsoft Reporting Services Projects (VSIX 2.6.2), refer to the Microsoft SSDT documentation.
- APM SSRS Data Processing Extension plugin for Visual Studio from the Admin Installer.

### Deploying Reports

After you have installed and configured the basic APM system architecture, configure Reports.

## Rules System Requirements

### License Requirements

A Developers License is required to use Rules Editor.

### **Additional Components Required**

In addition to the basic APM system architecture, your system must also contain the following additional components:

- Microsoft Visual Studio 2017, 2019, or 2022 Professional must be installed on every workstation where you want to work with APM rules in the APM system.

**Note:** For Build Projects, the target SDK for Visual Studio 2017 is not compatible.

- APM Rules Editor Extension plugin for Visual Studio from the Admin Installer.

### **Deploying Rules**

After you have installed and configured the basic APM system architecture, you will need to perform some configuration steps specifically for Rules.

## **SIS Management System Requirements**

### **License Requirements**

The SIS Management license is required to take advantage of the SIS Management functionality. This license is also required to use the integration between SIS Management and Layers of Protection Analysis (LOPA).

To use the integration between SIS Management and Hazards Analysis, the Hazards Analysis license is also required.

### **Additional Components Required**

Only the basic APM system architecture is required for this feature to work correctly. No additional components are required.

### **Deploying SIS Management**

After you have installed and configured the basic APM system architecture, you will need to perform some configuration steps specifically for SIS Management.

## **Thickness Monitoring (TM) System Requirements**

### **License Requirements**

The Thickness Monitoring license is required to take advantage of TM functionality.

### **Additional Components Required**

In addition to Thickness Monitoring, if you will use devices to collect data that you will transfer to APM, the machine that will connect to these devices must have the APM Device Service installed. The following devices are supported:

- GE DMS Go
- GE DMS Go+
- GE DMS2
- Olympus (Panametrics) 37DL Plus Ultrasonic Thickness Gage
- Olympus (Panametrics) 38DL Plus Ultrasonic Thickness Gage

These devices may require additional drivers provided by the manufacturer.

### **Deploying Thickness Monitoring**

After you have installed and configured the basic APM system architecture, you will need to perform some configuration steps specifically for Thickness Monitoring.



# Chapter 11

---

## Administrative Features

### Topics:

- [About Access to Configuration Manager Features](#)

## About Access to Configuration Manager Features

You need a Developers license to perform the following functions:

- Adding or deleting an **Entity** family on the **Family Management** page.
- Adding an **Entity** family by using the Import tool.
- Adding or deleting **Fields** via the **Family Management** page.
- Adding family Fields by using the Import tool.
- Adding, editing, or deleting Relationship families via the **Family Management** page.
- Adding or editing Relationship families by using the Import tool.
- Adding, editing, or deleting Relationship Definitions via **Family Management** page.
- Adding or editing Relationship Definitions by using the Import tool.
- Adding, editing, or deleting VB Rules by using Rules Editor.

The following table lists the permissions granted to the MI Configuration Role Security Group for accessing the various administrative features of Configuration Manager.

Feature	Permission	Notes
<b>Security Group: MI Configuration Role</b>		
Entity Family	Add, Edit, or Delete	None
Fields	Add, Edit, Delete	None
Field Behavior	Add, Edit, or Delete	None
Relationship Family	Add, Edit, or Delete	None
Relationship Definitions	Add, Edit, Delete	None
Datasheet	Add, Edit, or Delete	None
State Configuration	Add, Edit, or Delete	None
Family Reports (Associate SSRS Reports)	Add, Edit, or Delete	None
Associated Pages	Add, Edit, or Delete	None
Family Policies	Add, Edit, or Delete	None
Sites	Add, Edit, or Delete	None
System Codes and Tables	Add, Edit, or Delete	None
Units of Measure and Conversions	Add, Edit, or Delete	None
Manage Translations	None	There is no add, edit, or delete function that you can perform in this feature. However, if you are a part of this group, then you can perform all of the translation tasks.
Import	None	There is no add, edit, or delete function that you can perform in this feature. However, you can import all metadata if you are part of this group.

Feature	Permission	Notes
<b>Security Group: MI Configuration Role</b>		
Export	None	There is no add, edit, or delete function that you can perform in this feature. However, you can export metadata if you are part of this group.
Content Validation	None	There is no add, edit, or delete function that you can perform in this feature.

# Chapter 12

---

## Support

### Topics:

- [Customer Support](#)

# Customer Support

To contact support, go to: <http://www.ge.com/digital/support>.