



APM Connect



Contents

Chapter 1: Overview	1
About APM Connect	2
Access the APM Connect Page	2
Chapter 2: Installation and Upgrade	3
Installation	4
Optional Configuration	21
Upgrade	38
Chapter 3: Admin	39
Access the APM Connect Administration Center	40
Configure the APM Connect Administration Center	42
Authorize Users for Projects	43
Set User Permissions	43
Configure Logging	44
Deploy Audit Job for Adapters	44
Create the Intermediate Repository Database	46
Configure Source System Custom Field Mappings or Default Values	47
Chapter 4: Studio	50
Configure the APM Connect Administration Center for the Studio	51
Install the Studio	52
Chapter 5: Data Loaders	53
General Information	54
APM Family Data Loader	55
Taxonomy Data Loader	65
Work History Data Loader	74
Equipment and Functional Location Data Loader	88

Chapter 6: Automatic Data Loader	104
About the Automatic Data Loader Job	105
Set up the Automatic Data Loader Job	105
Configure the Context File	106
Use the Automatic Data Loader	107
The Automatic Data Loader Directories	107
Chapter 7: EAM Adapters	110
EAM Adapters	111
System Architecture for EAM Adapter	111
Chapter 8: Reference	113
General Reference	114

Copyright GE Digital

© 2023 General Electric Company.

GE, the GE Monogram, and Predix are either registered trademarks or trademarks of All other trademarks are the property of their respective owners.

This document may contain Confidential/Proprietary information of and/or its suppliers or vendors. Distribution or reproduction is prohibited without permission.

THIS DOCUMENT AND ITS CONTENTS ARE PROVIDED "AS IS," WITH NO REPRESENTATION OR WARRANTIES OF ANY KIND, WHETHER EXPRESS OR IMPLIED, INCLUDING BUT NOT LIMITED TO WARRANTIES OF DESIGN, MERCHANTABILITY, OR FITNESS FOR A PARTICULAR PURPOSE. ALL OTHER LIABILITY ARISING FROM RELIANCE UPON ANY INFORMATION CONTAINED HEREIN IS EXPRESSLY DISCLAIMED.

Access to and use of the software described in this document is conditioned on acceptance of the End User License Agreement and compliance with its terms.

Chapter 1

Overview

Topics:

- [About APM Connect](#)
- [Access the APM Connect Page](#)

About APM Connect

The APM Connect system provides the means to load data from the Industrial Internet of Things (IIOT) into GE Digital APM.

The system uses data loaders and adapters to establish a data flow between GE Digital APM and EAM systems, Field Service Management systems, and other assets. The APM Connect context file defines the communication path between the IIOT and GE Digital APM.

Note: For information about the APM Connect versions corresponding to GE Digital APM versions, refer to the [APM Connect Version Compatibility Table](#) on page 114.

You can ingest data to GE Digital APM using one of the following methods:

- [Using Data Loaders Manually](#)
- [Using Automatic Data Loaders](#)
- [Using EAM Adapter](#)

Access the APM Connect Page

Procedure

In the **Applications** menu, navigate to **ADMIN > Operations Manager > Connections.**, and then select **APM Connect.**

The **APM Connect** workspace appears.

Chapter 2

Installation and Upgrade

Topics:

- [Installation](#)
- [Optional Configuration](#)
- [Upgrade](#)

Installation

About APM Connect Installation Package

GE Digital APM creates and delivers an installation package that provides the files and folders needed for a successful implementation of APM Connect. This topic describes what may be contained in your installation package based on your requirements.

Contents of the Installation Package

The installation package contains the following folders:

Folder	Description
UDLP - EAM On Premise 5.0.0	Contains the Job Packages for the On Premise Installation.
APM Connect Base 3.0.2	Contains the APM Connect Base.

Deploy APM Connect Base for the First Time

The topics outline the steps that you must complete to deploy and configure this module for the first time. These instructions assume that you have completed the steps for deploying the basic GE Digital APM system architecture.

About This Task

These tasks may be completed by multiple people in your organization. We recommend, however, that the tasks be completed in the order in which they are listed.

Task	Notes
Open the required server ports .	This step is required.
Review the APM Connect system requirements .	This step is required.
Run the APM Connect Installer on page 8	This step is required.
Access the APM Connect Administration Center on page 40	This step is required.
Restart Jobs on Server Reboot on page 14	This step is required.
Update PostgreSQL Networking Configuration on page 14	This step is required.
Configure SSL Enabled UI on page 15	This step is optional.
Configure Karaf Container on page 17	This step is optional.
Configure Karaf Container on page 17	This step is optional.
Configure Parameters	This step is optional.

Task	Notes
Deploy any adapters you need. GE Digital APM supports the following adapters: <ul style="list-style-type: none"> Maximo Adapters SAP Adapters 	This step is optional.
Configure the Ingestor database.	This step is required to use data loaders. The Ingestor database stores the data uploaded by the data loaders.

Required Server Ports

To provide communication between APM Connect and other systems, make sure the listed ports are open.

Port Numbers	Description
80, 9080, 8879, 9043, 9044, 9060, 9061, 9430, 9443, 139, 50000, 50005, 3300	Used for SAP and Maximo Interfaces.
8080, 8005, 7000, 7001, 7777, 7555, 1099, 8040, 8101, 9001, 44444, 5432	Used for GE Digital APM Interfaces.
<ul style="list-style-type: none"> 6220 - Dedicated 7220 - RAC 	Used for the Oracle client.

System Requirements

License Requirements

APM Connect has a three-tier license system that enables the APM Connect Framework. One of the following license types is required to take advantage of the APM Connect functionality:

- APM Connect Basic
- APM Connect Plus
- APM Connect Studio

Note: APM Connect Studio contains numerous libraries that integrate with third-party products, such as GeoRaster. Questions regarding linking these libraries with GE Digital APM should be directed to a member of the GE Digital APM Professional Services department on an individual basis. Specific requirements of third-party products is outside the scope of APM Connect Studio support.

Additional Licensing for Adapters

Adapter	License	Description
SAP Adapter	SAP Integration Interfaces	Enables the SAP Equipment, Functional Location, Work History, and Notification Creation Adapters.
	SAP Technical Characteristics	Enables the SAP Technical Characteristics Adapter.
	SAP Work Management	Enables the SAP Work Management Adapter.
SAP PI	SAP Process Integration	Enables the SAP PI Adapters.
Maximo Interfaces	Maximo Interfaces	Enables the Maximo Equipment, Functional Location, Work History, Service Request, and Work Order Generation Adapters.

Note: There is no additional license required to take advantage of the APM Connect Data Loader functionality.

UDLP Versions

Beginning with the Sept. 21, 2018 release, GE Digital APM will maintain compatibility with the APM Connect client-side jobs one version prior to the newly released version.

To prevent processing failures, you must upgrade your on-premises, client-side jobs within two months of a GE Digital APM release to the most current version of the APM Connect client jobs. For example, if the GE Digital APM tenant has installed the Dec. 14, 2018 release, you must upgrade the on-premises, client-side jobs to UDLP V2.5.0 or V2.5.1 by Feb. 14, 2019, otherwise the next release of the GE Digital APM tenant may not process your data correctly.

The following UDLP versions are currently supported in GE Digital APM:

- V5.0.0

Hardware Requirement

Table 1: Hardware Requirements for APM Connect Server

Minimum Requirements	Recommended Requirements
Four Processor Core, 2.0GHz	I5 Processor, 2.0 + GHz
16 GB RAM	32 GB RAM
100 GB Free Disk	300 GB Free Disk
100 MB Network Interface	1 GB Network Interface

Tip: APM Connect is input and output intensive, and requires a large amount of storage space. Faster storage is the best way to improve the performance of APM Connect.

Depending on how your system is configured, these requirements may not be sufficient. Parameters that affect the hardware requirements include the number of users, modules purchased, database size, and other factors that can vary from one customer to another. For help refining your specific system requirements, contact GE Digital

Software Requirements

In addition to the basic GE Digital APM system architecture, your system must also contain the following components:

Minimum Requirements	Recommended Requirements
Windows Server 2016	Windows Server 2016 R2
Windows Server 2019	
Open JDK 11	

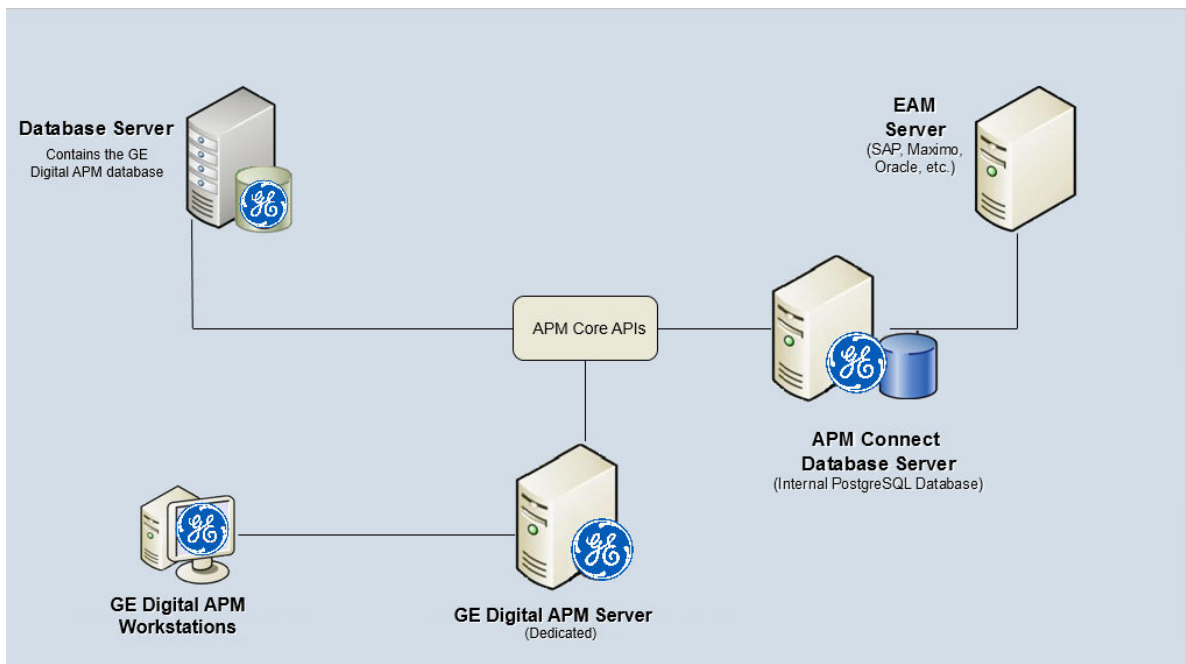
Browser Requirements

Web Browser	Recommended or Supported
Mozilla Firefox ESR 68	Supported
Mozilla Firefox up to latest available browser version	Supported
Microsoft Internet Explorer 11 or later	Supported
Microsoft Edge up to latest available browser version	Supported
Apple Safari 12 or later	Supported
Google Chrome up to latest available browser version	Recommended

System Architecture for EAM Adapter

Single Server Configuration (Recommended)

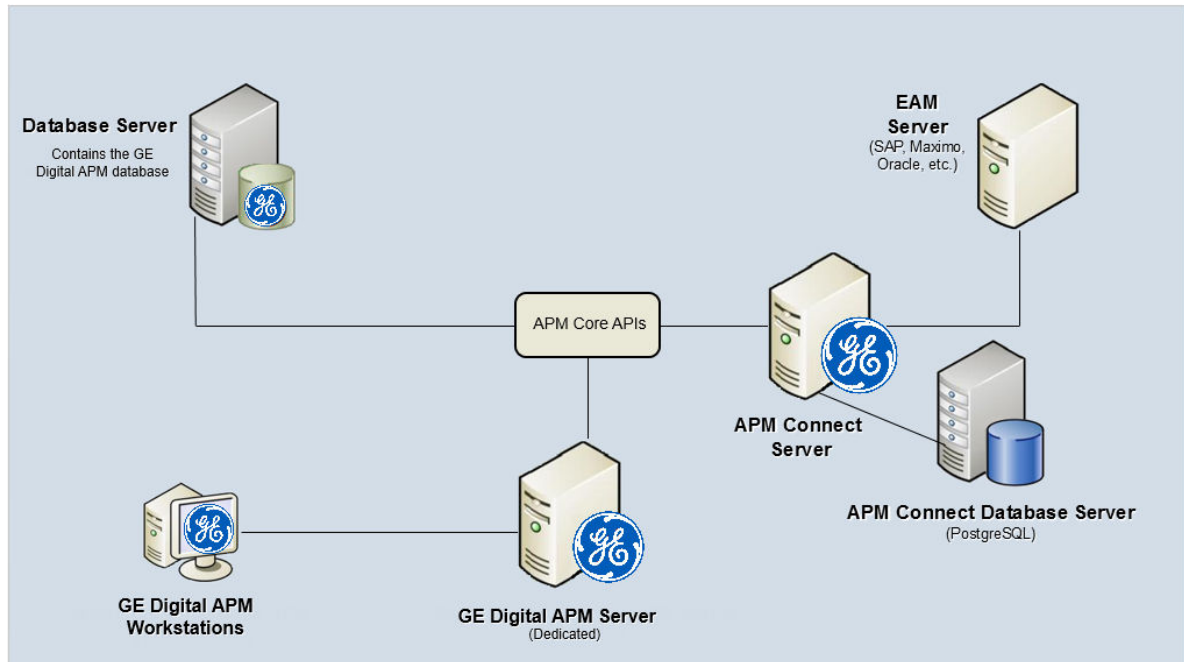
The single server configuration is the simplest way to configure APM Connect. However, it does include an embedded database. The following image depicts this configuration.



External Database Configuration

Many organizations choose to separate their databases. It is possible to install the intermediate repository database on an external server, and to keep the APM Connect Systems database on a different server. The following image depicts this configuration.

Note: The external configuration will affect performance. The single server configuration results in faster performance.



Run the APM Connect Installer

Before You Begin

Before you can run the APM Connect Installer, you must:

- Ensure that your system meets the APM Connect [system requirements](#).
- Access the APM Connect installation package.
- For SAP integrations, download the SAP Java Connector Files (SAP JCO) from the SAP marketplace.

Procedure

1. On your APM Connect server, access the APM Connect installation package, navigate the Installer folder, and then open the package.
2. Double-click the file **APMConnect-Base.exe**.
3. On the message that asks if you want the installer to make changes to your machine, select **Yes**.
4. In the **Setup - APM Connect** window, select **Next**.
5. In the **Select Destination Location** window, select the destination to which you want to save the software by doing one of the following:
 - To select the default location (C : \APMConnect), just select **Next**.
 - To use a different location, navigate to the folder you want to use, select **OK**, and then select **Next**.
6. In the **Select Components** window, select the components to you want to install, and then select **Next**.

- **Install open Java Development Kit [Zulu 11.48.21] (uncheck if Zulu Java already installed)**
- **Install PostgreSQL (required unless using external database):** If you are using an external database configuration, clear the check box.
- **Install APM Connect Container (required unless already installed):** If you have previously installed the APM Connect Container, clear the check box.
- **Install APM Connect JobServer (required unless already installed):** If you have previously installed the APM Connect JobServer, clear the check box.

7. Select **Next**.

The Setup screen appears.

8. In the **Select Start Menu Folder**, select the folder where the Start Menu folder is saved by doing one of the following:

- To select the default folder (APMConnect), select **Next**.
- Navigate to the folder to which you want to save the Start Folder, select **Ok**, and then select **Next**.

The **Select Additional Tasks** screen appears.

9. In the **Select Additional Tasks** window, select any additional tasks the installer should perform based on your APM Connect and the APM Connect components you are deploying, and then select **Next**.

- **Create a desktop shortcut:** If you do not want to create a shortcut on your desktop, clear the box.
- **Set JAVA_HOME environment variable:** If Java is already installed, and an environment variable does not need to be created, clear the check box.
- **Tomcat Windows service:** If the Tomcat Windows service does not need to be created, clear the check box.
- **APMConnect Container service:** If you don't want to install the APM Connect Container service, clear the check box.
- **Configure APMConnect Container service:** If you don't want to configure the APM Connect Container service, clear the check box.
- **Install APM Connect Container service SAP JCO driver software:** If your source system is SAP, select this check box.
- **Configure APM Connect JobServer Service:** If you do not want to configure the APM Connect JobServer service, clear the check box.

10. Select **Next**.

11. In the **Ready to Install** window, review the items to be installed, and then select **Install**.

If you selected **Install APM Connect Container service SAP JCO driver software** in the previous window, the **Select the SAP JCO Driver Location** window appears.

Note: If you did not select **Install APM Connect Container service SAP JCO driver software**, the **Select the Job Location** screen appears, and you can proceed to Step 13.

SAP JCO driver installation:

12. **Optional:** In the **Select the SAP JCO Driver Location** window, in the **SAP Bundle** box, specify the location of the file **sapjco3.jar**, which is part of the SAP Java Connector Files (SAP JCO) that you downloaded from the SAP marketplace.

13. If you selected **Install APM Connect Container service SAP JCO driver software** in the previous window, the **Select the SAP JCO Driver Location** window appears.

- To select the default location (C:\APMConnect\Downloaded Jobs Package), select **Next**.
- To select a different location, select **Browse...**, navigate to the location where the jobs package is located, select **OK**, and then select **Next**.

Note: The jobs package is not part of the APM Connect Installation package. Instead, you will receive it as a separate artifact (for example, download from a designated ftp site).

APM Connect setup:

14. In the **Select the APMConnect License file** window, select the folder that contains the APMConnect license.

- To select the default location (C:\APMConnect\license), select **Next**.
- To select another location, select **Browse...**, navigate and select the folder that contains the license, select **Ok**, and then select **Next**.

15. In the **APMConnect Server Information** window, in the **Hostname:** box, enter the name of your APM Connect server, and then select **Next**.

After the progress bar indicates that the APM Connect installer is finishing installation, the Java SE Development Kit installer starts.

Zulu JDK setup:

16. In the **Zulu JDK - Setup Wizard** window, select **Next**.

17. In the **Custom Setup** window, select **Next**.

18. In the **Ready to Install** window, select **Install**.

The Zulu JDK installation progress bar appears. the screen appears.

19. In the **Completed Zulu JDK** window, select **Finish**.

Java is installed.

20. A popup appears for the setup of the JavaHome environment variable. Select **OK**.

21. A command window appears to the setup of the JavaHome, After its completion **Press any Key to Continue**.


Zulu Java is installed.

Tip: If an error appears on the command prompt window, refer to creating [Java](#) environment variables.

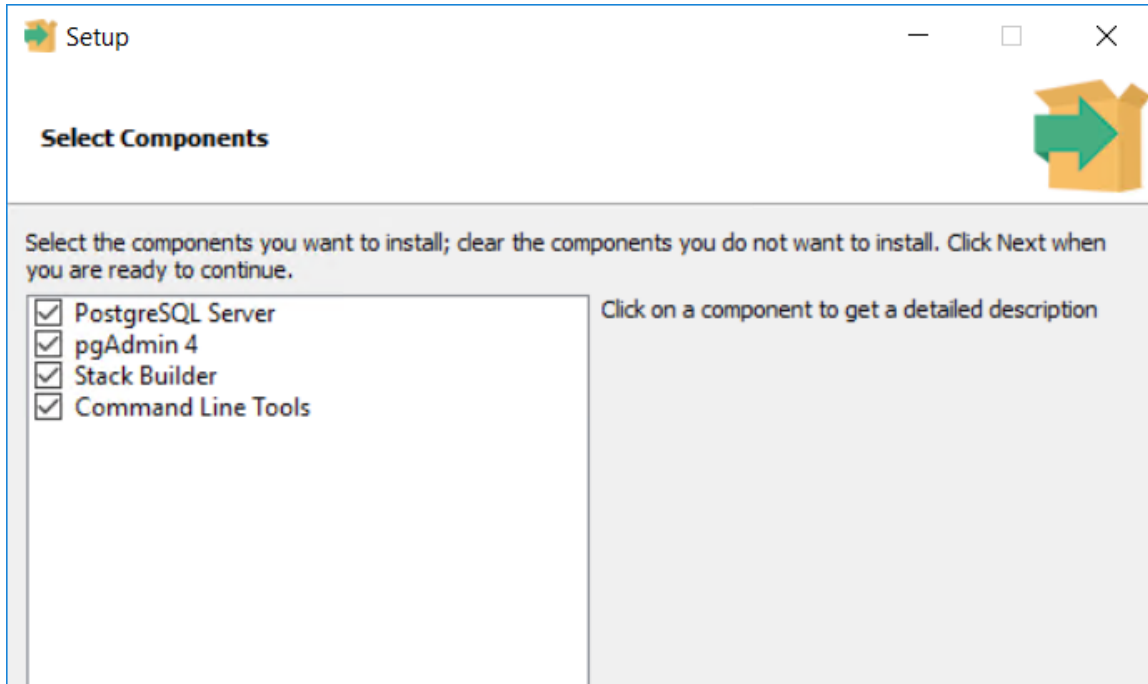
PostgreSQL setup:

22. In the **Setup - PostgreSQL** window, select **Next**.

23. In the **Installation Directory** window, select the location to install PostgreSQL.

- If you are satisfied with the default location (C:\Program Files\PostgreSQL\11), select **Next**.
- If you want to change the location where the software will be installed, select the  button, navigate to the location where you want to install PostgreSQL for APM Connect, and then select **Next**.

24. In the Select Components Window Uncheck the **Stack Builder**, and then select **Next**.



25. In the **Data Directory** window, select **Next**.

The **Password** screen appears.

26. In the **Password** window, in the **Password** , and the **Retype password** field, enter a password, and then select **Next**. Enter the password as `postgres`.

Tip: This password will be used as a service account for PostgreSQL, and is needed in later configuration. Be sure to record it. **If this password is changed necessary configurations will be required for TAC (Talend Application Center) setup to accept new password.** Additionally, this documentation assumes `admin` as the password, and uses it in subsequent default configurations.

27. Select **Next**.

28. In the **Port** window, specify the port number. If you are satisfied with the default port,

- To select the default port (5432) select **Next**.
- In the **Port** box, enter the port on which you prefer the server to listen, and then select **Next**.

Tip: The port number is needed in later configuration. Be sure to record it. Additionally, these instructions and all subsequent instructions assume that the default port 5432 is used.

29. In the **Advanced Options** window, select **Next**.

30. In the **Pre Installation Summary** window, Select **Next**.

31. In the **Ready to Install** window, Select **Next**.

An installation progress bar appears. screen appears.

32. After the installation bar indicates that the installation is complete, in the **Completing the PostgreSQL Setup Wizard** window appears. Select **Finish**.

Note: After the database installation is complete, if a message appears asking you to restart your computer, select **No** to continue APM Connect installation.

Complete setup:

If you have selected the installation of APM Connect Container service or the SAPJCO driver software , the **Administrator: Windows Power Shell** and **Administrator: Karaf** windows appear. Installation progress may not be visible on the screen for 10-15 minutes. During this time, do not press any key or close the windows.

33. In the **Completing the APM Connect Setup Wizard** window, make sure **Yes, restart the computer now** is selected, and then select **Finish**.

The APM Connect installer has completed its operations, and the machine should restart automatically.

34. **Optional:** If the machine does not do so automatically, restart your machine.

Access the APM Connect Administration Center

Using the APM Connect Administration Center, you can run extraction and load jobs. Before you can begin running jobs, you must set up the APM Connect Administration Center. This topic explains how to access and deploy the APM Connect Administration Center for the first time.

Procedure

1. Open a web browser, and then enter the following URL into your web browser: `http://localhost or hostname provided:8080/apmconnect/`.
2. In the **Data Parameters** window (if it appears, refer to the Step 3), in the **Password** box, enter `postgres`, and then select **OK**.
3. If the TAC license file was not provided during the install step you will get the **Database Parameters** window to setup the license. If already provided you will get the APM Connect **Login** Page (Check step 5).
4. Select .

The **Database parameters** window appears, and a check is performed by the APM Connect Administration Center.

Important: If your license does not validate, you can [validate your license manually](#).

5. If your license validates, in the **Database parameters** window, select **Go to login page**.

The **Login** page appears.

6. In the **Login** window, enter the required information and then select **Login**.

- In the **Login** box, enter the default username: `admin@company.com`.
- In the **Password** box, enter the default password: `admin`.

The APM Connect Administration Center is successfully deployed, and the APM Connect Administration Center **Welcome** page appears.

7. Add an APM Connect Service User using the following steps:

- a) Select **Users** in the **Menu** Pane, and then select **Add**.

- b) Add the following information:

- Login ID – preferably an e-mail id. For example, `apmc@company.com`
- First Name and Last Name – Add an identifier name
- Password – Preferably `admin` or user defined
- Type – Data Integration/ESB
- For the Role select all the roles except **Auditor**

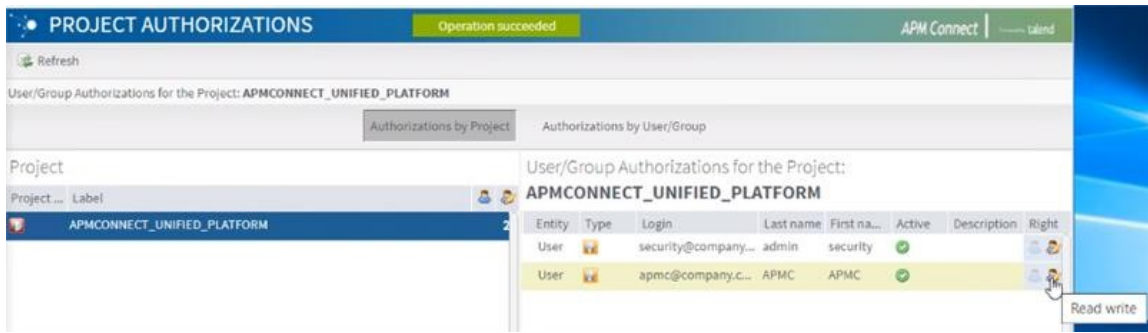
- c) Select **Save**.

8. Logout of the APM Connect Administration Center and then log back in as the Service user that you setup in Step 7 (For example, `apmc@company.com/admin`).

9. Select a Project on the **Welcome** page.

Note: If no project is displayed you can add a new project titled **APMCONNECT_UNIFIED_PLATFORM** with **Project Type** value set as `Data Integration/ESB` and **Storage** value set as `None`.

10. In the **Menu** pane select **Project Authorizations**



11. In the **Project** section select the project **APMCONNECT_UNIFIED_PLATFORM**, and provide the Read and Write access to the newly created service user.

12. In the **Menu** pane select **Servers** to check the execution server details.

13. If no Server is displayed, then add a server with **Label** value set as JobServer and other values configured as shown below:

Execution server

Label:

Description:

Host:

Time zone:

Command port:

File transfer port:

Monitoring port:

Process message port:

Timeout on unknown state (s):

Username:

Password:

Use SSL:

Active:

Talend Runtime

14. Select **Save**.

15. In the **Menu** pane select **Job Conductors** to check if any jobs are deployed.

Note: If jobs are not deployed then the APM Connect jobs provided need to be deployed manually.

Restart Jobs on Server Reboot

Restart APM Connect Jobs on Server Reboot

About This Task

Use this procedure to configure the APM Connect server if you want to ensure that the APM Connect jobs run automatically after the server is restarted for maintenance activity.

Procedure

1. On the APM Connect server, go to the folder `<root:>\APMConnect\`.
2. Create a folder `JobWatcher`.
3. Create files named `APMC_Service.properties` and `joblist.csv` in the `<root:>\APMConnect\JobWatcher` folder according to the details given below.

Enter the parameters in the `APMC_Service.properties` file as shown in the example below:

Parameter	Description
<code>JOB_LIST=C:/APMConnect/JobWatcher/joblist.csv</code>	Job list to monitor
<code>TAC_PWD=XXXXX</code>	TAC password
<code>TAC_ADMIN=abc.xyz@ge.com</code>	TAC user
<code>HOSTNAME=roaperflabvm3.meridium.com</code>	TAC hostname
<code>LOCALUSER=Administrator</code>	System user

Enter the list of jobs that need to be triggered if not running in the `joblist.csv` file.

4. Navigate to the folder containing the updated jobs package and copy the `jobWatcher.zip` file.
5. On your APM Connect server, navigate to `<root:>\APMConnect-jobMonitor` and paste the `jobWatcher.zip` file.
6. Extract the contents of the `jobWatcher.zip` file.
7. Create a task `JobWatcher_APMConnect` in Windows Task Scheduler, and perform the following actions:
 - a) Create a trigger that runs at startup, and another that runs on a daily schedule.

Note: You can configure both triggers to repeat the task every five minutes indefinitely.
 - b) Create an action to start a program. Browse for the `jobWatcher_run.bat` batch file.

Update PostgreSQL Networking Configuration

To allow connections from the GE Digital APM Server to APM Connect, you must update the PostgreSQL networking configuration. This topic describes how to perform the configuration update.

Procedure

1. On the machine on which you installed APM Connect, navigate to your PostgreSQL installation files. The default location is `<root:>\Program Files\PostgreSQL\11\data`.
2. Locate the configuration file `pg_hba.conf`, then right-click on the file, and then open it with a text editor.

The file `pg_hba.conf` opens in the text editing application.

3. Scroll down to the end of the document and locate the following line of text: `host all all 127.0.0.1/32 md5`

```
76
77 # TYPE DATABASE USER ADDRESS METHOD
78
79 # IPv4 local connections:
80 host all all 127.0.0.1/32 md5
81 host all all <APM IP address>/32 md5
82 # IPv6 local connections:
83 host all all ::1/128 md5
84 # Allow replication connections from localhost, by a user with the
85 # replication privilege.
86 #host replication postgres 127.0.0.1/32 md5
87 #host replication postgres ::1/128 md5
88
```

4. Add a `host all all` statement specifying the IP address of the GE Digital APM Server using method `md5`.
5. Save the file, and then close the text editor.

Note: For better security posture, it is recommended to restrict the PostgreSQL access from the GE Digital APM Server only.

Results

PostgreSQL is now configured to open the connection from the GE Digital APM Server.

Configure SSL Enabled UI

Configure SSL Enabled APM Connect UI. This is an optional step.

About This Task

To enable secure access to the APM Connect TAC Application from the UI, you must provide additional security to the data flow by configuring the APM Connect server to use SSL.

Procedure

1. Shut down Tomcat (Stop service: `APMConnect_Tomcat`).
2. Navigate to the Tomcat `conf` sub-folder, `C:\APMConnect\tac\apache-tomcat-9.0.45\conf`.
3. Take backup of `server.xml` and then edit the `server.xml` file.
4. Locate and uncomment the SSL-enabled HTTP connector (it is commented out by default).
5. Modify the connector `config*` as shown below:

```
<Connector
  protocol="org.apache.coyote.http11.Http11NioProtocol"
  port="8443" maxThreads="200"
  scheme="https" secure="true" SSLEnabled="true"
  clientAuth="false" sslProtocol="TLS"
  keystoreFile="full path to keystore file "
  keystorePass="talend"/>
```

```
<Connector
  protocol="org.apache.coyote.http11.Http11NioProtocol"
  port="8443" maxThreads="200"
  scheme="https" secure="true" SSLEnabled="true"
  keystoreFile="C:\APMConnect\keystore\talendKey" keystorePass="talend"
  clientAuth="false" sslProtocol="TLS"/>
```

6. Remove the `tcnative-1.dll` DLL from the Tomcat bin folder. You can move the file to an archive directory or rename it. For example, you can re-name it to `tcnative-1.dll.DISABLED`.
7. Restart Tomcat.
8. Navigate to the base Tomcat landing page over HTTPS, <https://localhost:8443/apmconnect/> and check if the HTTPS protocol is supported.

Note: If self-signed certificates are used, the browser displays the link as not secured. These keys are self-signed. In a production system, you should use a Certificate Authority (CA). For more information, refer to [SSL/TLS Configuration How-To](#).

Configure Karaf Services

Configure SSL Enabled APM Connect Karaf Services. This is an optional step.

About This Task

To enable secure access to the APM Connect Services you must provide additional security to the data flow by configuring the APM Connect Container service to use SSL.

Procedure

1. Shut down APM-CONTAINER. (Stop service: APM-CONTAINER)
2. Navigate to the runtime **etc** sub-folder, `C:\APMConnect\runtime\etc\`.
3. Take backup of `org.ops4j.pax.web.cfg` and edit `org.ops4j.pax.web.cfg` to change the highlighted parameters in the file.

```
#
# Default port for the OSGI HTTP Service
#
org.osgi.service.http.port=8040

org.osgi.service.http.port.secure=9001
org.osgi.service.http.secure.enabled=true
org.ops4j.pax.web.ssl.keystore=${karaf.base}/etc/keystores/keystore.jks → Change KeyStore.jks
org.ops4j.pax.web.ssl.password=██████████ → Change Keystore password
org.ops4j.pax.web.ssl.keypassword=██████████ →
org.ops4j.pax.web.config.file=${karaf.base}/etc/jetty.xml
```

4. Restart APM-CONTAINER service
5. Navigate to the base container landing page over HTTPS <https://localhost:9001/services> and check if the HTTPS protocol is supported.
6. Import the created **.cer** file into the **Trusted Root Certification Authorities** section .
7. Navigate to the **Connection** page and change the **Connection String** to `https://localhost:9001/services`.

Results

APM Connect container services are SSL Enabled.

Configure Karaf Container

Configure SSL Enabled APM Connect Karaf Container for SSL Enabled APM. This is an optional step.

Before You Begin

If you want to use SSL for connections from APM Connect, this step is required.

About This Task

If you want to use SSL to move data through the system, you must import security certificates from the secured application into a truststore file that is accessible to APM Connect. This procedure describes the process for a single application. To import multiple certificates into a single truststore file, you can repeat the procedure for each application requiring SSL.

Note: When you copy the certificates, make sure that you only log in to the application that requires SSL access to APM Connect.

If you want to use SSL with GE Digital APM web services, contact GE Global Support.

Procedure

1. Log in to your application, and then access the certificate information from your browser.
You can access certificate information by selecting the lock icon in the address bar.
The **Certificate** window appears.
2. Select **Details**, and then select **Copy to File...**
The **Certificate Export Wizard** window appears.
3. Select **Next**.
The **Export File Format** window appears.
4. Select **DER encoded binary X.509 (.cer)**, and then select **Next**.
The **File to Export** window appears.
5. Select **Browse...**
The **Save As** window appears.
6. Save the file to any temporary directory under the name certificate.cer. If you have a chain of certificates, you can import multiple certificates into a single truststore name, For example, cert1.cer, cert2.cer, certN.cer.
7. Select **Next**.
8. Select **Finish**.



The **Certificate Export Wizard** window appears.

9. Select **OK**.

10. On the APM Connect server, access the Command Prompt window as an Administrator, and then navigate to the location of the %JAVA_HOME%/bin on your machine.

11. Enter keytool commands for the Key.

Following command imports multiple certificates in to single keystore. If you have one certificate to import, use one command.

```
keytool -import -alias cert1 -file C:\APMConnect\cert1.cer -keystore C:\APMConnect\truststore.ts
```

```
keytool -import -alias cert2 -file C:\APMConnect\cert2.cer -keystore C:\APMConnect\truststore.ts
```

```
keytool -import -alias cert3 -file C:\APMConnect\cert3.cer -keystore C:\APMConnect\truststore.ts
```

Certificate Management Tool appear in the Command Prompt.

12. Enter a password and then re-enter the password to confirm.

In the **Command Prompt** window, you are asked if you want to trust the certificate.

13. For yes, enter `y`.

The keystore file is created.

14. Copy `truststore.ts` file from `C:\APMConnect\truststore.ts`.

15. Add the JVM Parameters in Karaf container configuration file, `C:\APMConnect\runtime\etc\APM-CONTAINER-wrapper.conf`.

Locate # JVM Parameters in file and add the following parameter at last after 12th parameter:

```
wrapper.java.additional.13=-Djavax.net.ssl.trustStore="C:/APMConnect/
runtime/etc/keystores/truststore.ts"
```

```
wrapper.java.additional.14=-
Djavax.net.ssl.trustStorePassword="Password"
```

16. Access the **Job Context file** and **Services Configuration files**, and then enter the following values for the corresponding parameters:

- **TRUSTSTORE_FILE**: The location of the truststore file you created.
- **TRUSTSTORE_PASSWORD**: The password you entered in the Command Prompt window when you installed the certificate.
- **USE_SSL**: true.
- **APM_API_USE_SSL**: true, if you are using SSL on the GE Digital APM Server.

17. Restart the APM-Container services.

Results

SSL is now enabled for the applications for which you imported the certificates.

Install Ingestor Service

About This Task

The Ingestor service is installed as part of the APM Installation by choosing the **APM Ingestor Service** option.

Configure the Ingestor Database

Before You Begin

1. [Deploy APM Connect](#).
2. On the PostgreSQL database created in the APM Connect server, create a database with the same name as the APM data source name.

About This Task

The Ingestor database is used to store the data uploaded using a data loader. It is deployed on the PostgreSQL database created for APM Connect.

This topic describes how to configure the Ingestor database to work with GE Digital APM.

Procedure

1. Access GE Digital APM.
2. In the module navigation menu, select **ADMIN > Operations Manager > Ingestor Database Configuration**.

The **Ingestor Database Configuration** page appears.

3. Enter values as described in the following table.

Field	Description
HOST	Enter the hostname of the APM Connect server in which PostgreSQL is installed.
PORT	Enter 5432.
DATABASE NAME	Enter the PostgreSQL database name.
USERNAME	Enter postgres.
PASSWORD	Enter the password of the PostgreSQL database.

4. Select **Save**.
The Ingestor service is configured.

Configure Ingestor Workspace and Shared Folder

About This Task

By default, the Ingestor workspace is configured as `C:\ProgramData\Meridium\Connect`. To configure a new path that can be shared across multiple servers, complete the following steps:

Procedure

1. On the GE Digital APM server, navigate to `C:\ProgramData\Meridium\OTConnect\Ingestor`, and then open the `appsettings.json` file.
2. Add the following configuration block referring to the share folder:

```
"FileRepo": {  
    "Root": "\\MyDataLoaderFiles\Meridium\Connect\files"  
},
```

Uninstall APM Connect

Before you can [upgrade the APM Connect Base](#), you must uninstall your current version of APM Connect.

About This Task

When uninstalling APM Connect, the existing setup needs to be saved and propagated to the new installation. This would include existing configurations (context file), and Audit data (Date Control and Success/Failure records). The Job Conductor Configurations, Projects/User need to be backed up necessarily. Existing Jobs processing logs and karaf logs can be backed up for future reference.

Procedure

1. On the APM Connect server, access the **Uninstall or Change a Program** section of the Control Panel.
2. Select `APMConnect <version>`, right-click, and then select **Uninstall**.
3. Access the **Uninstall or Change a Program** section of the Control Panel again, select the Java programs (for example, Java 1.7.71 and Java SE Development Kit 1.7.71), right-click, and then select **Uninstall**.
4. On the APM Connect server, locate the folder `C:\APMConnect`, and then delete it.

Tip: If files are locked and prevent you from deleting this folder, you may need to restart the APM Connect server machine.

- Restart the APM Connect server machine.
APM Connect is uninstalled.

Optional Configuration

Encrypt Parameters

Parameters in the context file are not encrypted by default, which results in values being transmitted in clear text over the network. However, you can manually encrypt any parameter manually.

Procedure

- On the machine on which you installed APM Connect, access the file `EncryptString.zip`, and unzip it.
- Open the `EncryptString` folder, and then run `EncryptString_run.bat`.
Command prompt opens, and then the **Talend Open Studio** window appears.
- Enter the parameter value you want to encrypt in the **Enter the text to be encrypted:** box, and then select **OK**.
- In the command prompt, copy the text between the banners that was generated.

```
C:\MyData\Desktop>Password Test Folder of doon\apmpasswd\apmpasswd>apmpasswd_run.bat
C:\MyData\Desktop>Password Test Folder of doon\apmpasswd\apmpasswd>C:
C:\MyData\Desktop>Password Test Folder of doon\apmpasswd\apmpasswd>cd C:\MyData\Desktop>Password Test
C:\MyData\Desktop>Password Test Folder of doon\apmpasswd\apmpasswd>java -Xms256M -Xmx1024M -cp ../lib/
odec-1.7.jar;../lib/dom4j-1.6.1.jar;../lib/talend_file_enhanced_20070724.jar;../lib/systemRoutines.jar
1.jar; release_1_2_0.apmpasswd_0_1.apmpasswd --context=Default
Encrypted value below.
Copy text between the banners (==) and paste to the context file.
=====
4eMqV/Sf3L45IjtPw0TPdw==
=====
C:\MyData\Desktop>Password Test Folder of doon\apmpasswd\apmpasswd>
```

- Open the context file.
- In the parameter you want to encrypt, paste the generated text.
- In the parameter start tag, add `encrypted="true" algorithm="aes128"`, as shown in the following image:

```
<?xml version="1.0" encoding="utf-8" ?>
<!--
This file contains all the possible filter parameters so that one file is maintained as a config file f
Based on the context used in the job, the parameters are loaded.
-->
<configuration>
  <IR_PASSWORD encrypted="true" algorithm="aes128">4eMqV/Sf3L45IjtPw0TPdw==</IR_PASSWORD>
</configuration>
```

- Repeat Steps 2 on page 21-8 on page 21 for all of the parameters you want to encrypt.
- Save the context file.

Results

The parameters are encrypted.

Change and Encrypt the APM Connect Service User Names and Passwords

About This Task

Important: During installation, the system defines default users and passwords in a configuration file. Complete these steps on the APM Connect server to correctly secure the server.

Procedure

1. On the APM Connect server, if the service is running, stop the APM Connect service.
2. Navigate to `C:\APMConnect\runtime\etc`.
3. Open the file `users.properties` in an application that you can use to modify a text file (for example, Notepad).
4. Change the passwords for the default user names.
5. Specify your own user names using the following format:

```
user=password[,role] [,role] [,role]...
```

- or -

```
user=password[,group] [,group] [,group]...
```

Note: For information about groups and defining roles, refer to the Talend documentation.

6. Save and close the file.
7. To specify authorizations for the jobserver, open the file `users.csv`.
8. Add the authorized user names and passwords in the following format:

```
username,password
```

Note: For information about jobserver requirements, refer to the Talend documentation.

9. Save and close the file.
10. To enable password encryption, open the file `system.properties`.
11. Add the following statements at the end of the file:

```
# edit config
config:edit org.apache.karaf.jaas
config:property-set encryption.enabled true
config:update

# force a restart
bundle:restart
```

12. Save and close the file.
13. Start the APM Connect service.

Import APM Connect Services

Import the APM Connect Services (jar files) into the APM Runtime Container (Manual)

About This Task

To complete the connection between GE Digital APM, Karaf, and the APM Connect Administration Center, you must import all the jars file into the APM Runtime folder. This topic guides you through the process.

Procedure

1. On your local machine, access and then copy the `ConnectServices.jar` file.
2. Navigate to the following path: `<root:>\APMConnect\runtime\deploy`
3. Right-click inside the folder, and then select **Paste** to copy the .jar file into the Runtime folder.

The new service is deployed to the APM Connect host.

Enable Internet Explorer

Enable Internet Explorer for APM Connect

About This Task

Important: This step is required only if you are using Internet Explorer to access the APM Connect Administration Center. If you are not using Internet Explorer, you can skip this procedure, and proceed to the next step, in the APM Connect Base First-Time Deployment Workflow.

Procedure

1. On the APM Connect server, access **Control Panel\Network and Internet**, and then select **Internet Options**.

The **Internet Properties** screen appears

2. Select the **Security** tab, then, in the **Select a zone to view or change security settings** section, select **Local intranet**, and then select **Custom level...**

The **Security Settings -Intranet Zone** screen appears.

3. In the **Settings** section, access the **Include local directory path when uploading files to a server**, and select **Disable**.
4. Select OK.

The **Security Settings -Intranet Zone** screen closes.

5. On the **Internet Properties** screen, select **Apply**.

Internet Explorer is configured accommodate APM Connect.

Change the PostgreSQL Passwords


Procedure

1. Start pgAdmin.
2. Right-click on a database, and then select **Query Tool**.

The workspace for the selected database appears.

3. In the workspace, enter ALTER statements for each role to be changed using the following format:

```
ALTER ROLE username SET PASSWORD TO 'newpassword'
```

4. At the top of the workspace, select  .

The query runs and the password is changed.

Note:

- For more information about the PostgreSQL roles, see the PostgreSQL documentation.
- To enhance security, follow the steps below to allow the access of the PostgreSQL to only the APM application server instead of the entire network:

- a. Access the PostgreSQL Installation files on the machine on which you installed the APM Connect. The default location is `<root:>\Program Files\PostgreSQL\9.3\data`.
- b. Navigate to the configuration file `pg_hba.conf`.
- c. Right click and open the file in a text editor.
- d. Scroll down and navigate to: `host all all 127.0.0.1/32 md5`.
- e. Copy the text and paste it below the same line.
- f. Replace `127.0.0.1` with the applicable Meridium Enterprise APM IP address.

Configure SSL

If you want to use SSL for connections from APM Connect, this step is required.

About This Task

If you want to use SSL when moving data through the system, you must import security certificates from the secured application into a truststore file accessible to APM Connect. This procedure describes the process for a single application. You can import multiple certificates into a single truststore file by repeating this procedure for each application requiring SSL.

Important: When copying the certificates, make sure that you only log in to the application requiring SSL access to APM Connect.

Note: If you want to use SSL with GE Digital APM web services, contact GE Global Support.

Procedure

1. Log in to your application, and then access the certificate information from your browser.

Note: Typically, you can access certificate information by selecting the lock icon in the address bar.

The **Certificate** window appears.
2. Select **Details**, and then select **Copy to File...**
The **Certificate Export Wizard** window appears.
3. Select **Next**.
4. In the **Export File Format** window, select **DER encoded binary X.509 (.cer)**, and then select **Next**.
5. In the **File to Export** window, select **Browse...**
The **Save As** window appears.
6. Save the file to your Desktop under the name `certificate.cer`.
7. Select **Next**.
8. Select **Finish**.
The **Certificate Export Wizard** window appears.
9. Select **OK**.
10. Copy the `certificate.cer` file, and then paste it into the folder that contains the Java files for your machine.

Tip: For example, if your Java files are located at `C:\Program Files\Java\jre7\bin`, copy the `certificate.cer` file to that bin folder.
11. On the APM Connect server, access the Command Prompt window as an Administrator, and then navigate to the location of the Java files on your machine.
12. Enter `keytool`.
Commands for the Key and Certificate Management Tool appear in the Command Prompt.
13. In the last line, `C:\Program Files\Java\jre7\bin>`, enter `keytool -importcert -alias test -file certificate.cer -keystore publickey.store`.

14. Enter a password, and confirm the password by reentering it.
In the Command Prompt window, you are asked if you want to trust the certificate.
15. For yes, enter *y*.
The keystore file is created.
16. For the Karaf service, navigate to the location of the Karaf JDK, and then repeat steps 12 on page 24 through 15 on page 25 using the path and password for the Karaf service JDK.
 - For the value of the keystore argument, use the file path of the Karaf JDK, (for example, `C:\Program Files\Java\<JDK version>\jre\lib\security\cacerts`).
 - The default password for keytool is `changeit`. Enter your unique value.
17. Access the context file, and then enter the following values for the corresponding parameters:
 - **TRUSTSTORE_FILE**: The location of the truststore file you created.
 - **TRUSTSTORE_PASSWORD**: The password you entered in the Command Prompt window when you installed the certificate.
 - **USE_SSL**: `true`.
 - **APM_API_USE_SSL**: `true`, if you are using SSL on the GE Digital APM Server.

Results

SSL is now enabled for the applications for which you imported the certificates.

Configure the Karaf Server for SSL

To ensure proper communications between GE Digital APM and APM Connect, you must configure the server to use SSL.

About This Task

To provide a more secure data flow, you must make sure that the connection that provides the path from the APM Connect system to GE Digital APM is protected. You can provide additional security to the data flow by configuring the APM Connect server, which processes the jobs that send and receive data between the endpoints, to use SSL.

Procedure

1. Edit the file `etc/org.ops4j.pax.web.cfg` so that the HTTP feature uses SSL.
When you are done, the file should look similar to this example, with *your_password* replaced with the passwords you will use.

```
org.osgi.service.http.port=8040
org.osgi.service.http.port.secure=9001
org.osgi.service.http.secure.enabled=true
org.ops4j.pax.web.ssl.keystore=${karaf.base}/etc/keystores/
keystor.jks
org.ops4j.pax.web.ssl.password=your_password
org.ops4j.pax.web.ssl.keypassword=your_password
#org.ops4j.pax.web.config.file=${karaf.base}/etc/jetty.xml
```

2. Enable HTTP client support in APM Connect.
 - a) Navigate to `C:\APMConnect\Utilities\runtime`, and then enter `bin/trun`.
 - b) At the prompt, enter `feature:install http`.
3. From a certificate authority, obtain two certificates: one for the server and one for the client.
Important: Make sure you import the client certificate you receive into your application server.

4. In the APM Connect server, at the command prompt, import the server certificate into the server keystore.

The command will resemble the following example.

```
keytool -import -trustcacerts -keystore keystore.jks -storepass  
keystore_password  
-alias serverkey -file server.cer
```

5. In the APM Connect server, at the command prompt, import the client certificate into the server keystore.

The command will resemble the following example.

```
keytool -import -trustcacerts -keystore keystore.jks -storepass  
keystore_password  
-alias clientkey -file client.cer
```

6. In the APM Connect server, at the command prompt, verify that the client certificate is imported.

- a) In the APM Connect server, at the command prompt, enter `keytool -list -v -keystore keystore.jks`.
- b) At the password prompt, enter the keystore password.
The system responds similarly to the following example.

```
Keystore type: JKS  
Keystore provider: SUN  
Your keystore contains 2 entries  
.....  
Alias name: serverkey  
Creation date: Jun 1, 2018  
Entry type: PrivateKeyEntry  
.....  
Alias name: clientkey  
Creation date: Jun 1, 2018  
Entry type: trustedCertEntry  
.....
```

7. Test the APM Connect server configuration.

- a) Start the Karaf service.
`bin/client`
- b) Install the WebConsole feature.
`karaf@trun> feature:install webconsole`
- c) In a browser, enter `https://localhost:9001/system/console`.
You should get an error message similar to the following:

```
An error occurred during a connection to localhost:9001.  
  
SSL peer cannot verify your certificate.  
  
(Error code: ssl_error_bad_cert_alert)
```

- d) Import the client certificate from step 3 on page 25 into your browser using the process for managing certificates for that browser.
- e) Repeat step 7.c on page 26 to verify that the certificate imported successfully and you can access the APM Connect server.

Results

The APM Connect server is configured to require SSL.

Next Steps

Import any additional client application certificates for your installation.

Configure Multiple Source Systems or Multiple Plants

Whether you have multiple source systems or multiple plants connected to GE Digital APM, the configuration process is similar.

Before You Begin

- Identify the target APM Connect system and all required information, such as userids, passwords, IP addresses, and ports.
- Identify the source systems you need. These can be any type of source system or plants that have unique language or extraction requirements.
- Review the information about creating EAM system records.
- Review the information about configuring the context file for the types of source systems involved.
- Make sure that the language and decimal notation values for the source system System User and GE Digital APM match.
- Make sure GE Digital APM is deployed.

About This Task

You need to follow these steps if you have multiple source systems using APM Connect performing Extractions and RFC/Notification Management for a single GE Digital APM system or for a single GE Digital APM Tenant in a cloud environment. The scenarios include:

- Multiple source systems of the same EAM type. This situation has multiple SAP, Maximo, or ServiceMax Systems connected to a single GE Digital APM system.
- Multiple source systems with a mixture of EAM types. This situation has multiple SAP, Maximo, and ServiceMax systems connected to a single GE Digital APM system.
- A single source system that has plants that need different languages or extractions.
- An asset can only be accessed by a single CMMS-ID.

You use similar steps to configure APM Connect to support either multiple source systems or multiple plants from a single source system. The main differences are addressing of the sources, any applicable filtering of data, and the contents of the context file for each source. The following steps outline what needs to be done in both an on-premise environment or a cloud environment.

This topic assumes familiarity with the process of deploying APM Connect for a single source system and that you have already configured GE Digital APM for the first source system.

Procedure

1. For each source system or plant, create an EAM System Record.

Each source system or plant must have a unique system ID (CMMS-ID).

Note: If you are configuring multiple plants from a single source system, the IP addresses, user IDs, and other addressing information will be the same as the first EAM System Record you defined for the source system.

2. Run the job addSourceSystem to add configurations to the existing Intermediate Repository database with a different system ID for each source system or plant and the appropriate system type (SAP, Maximo, or ServiceMax).
3. Configure context files for each of the source systems or plants so they have separate jobs for the Extractions.

Important: Do not schedule the same interface job simultaneously from different source systems.

4. Set up RFC and Notifications from GE Digital APM to the source systems for either on-premise or cloud environments.

Environment	Action
On-premises	Deploy connectServices.jar service for the outbound interface to all the source systems from GE Digital APM.
Cloud	Import the connectServicesCloudClient job for each source system using the same context file used for the Extraction. Note: You should use Intermediate Repositories on each EAM system clients to send data to a single GE Digital APM tenant. The tenant will have separate connectServicesCloudClient for each extraction context.

5. **Optional:** For each SAP system, run the Static Data job to extract data for each SAP system.

Enable Multiple Cultures From a Single Source System

To enable data flow when there are multiple cultures configured for a single source system, you must complete the following steps.

Procedure

1. Create a context file for each culture originating from a specific source system.
 - a) Assign a CMMS_ID and TARGET_CMMS_ID that indicates the culture.
For example, consider a source system that supports both French and Spanish. Your CMMS_ID and TARGET_CMMS_ID for the two systems could resemble SRC1_client_FR and SRC1_client_ES.
2. Create the Intermediate Repository database for the first CMMS_ID you define.
3. For each additional CMMS_ID defined in Step 1.a on page 28, run the addSourceSystem job.
4. For each CMMS_ID defined in Step 1.a on page 28, create an EAM system record, using the CMMS_ID in the **System Name** field.
5. Select **Test Connection** for each EAM System record you created.

Results

You have configured APM Connect to support multiple cultures from a single source system.

Change Administration Center User Password

Change the APM Connect Administration Center User Password

Procedure

1. [Access the APM Connect Administration Center.](#)
2. In the **Menu** pane, in the **Settings** section, select the **Users** tab.
The **Users** workspace appears.
3. In the **Users** workspace, select the user whose password you want to change.
4. In the **Data** pane, select **change password**.
The **User Password** window appears.
5. Enter the new password, and enter it again to confirm.
6. Select **Validate**.

The password has been changed.

Create a Service Account User

This topic describes how to create a service account user that has access to the SAP server and runs the Karaf service.

About This Task

For security reasons, it is important to limit the number of users that can access the file shares between the SAP server and the APM Connect server. The best way to do this is to create one service account user to run the Karaf service and to access the SAP file shares on the SAP server.

Procedure

1. In the same domain as the SAP server, create an active directory user.
2. On the SAP server, create a new folder that will be shared with the new user you just created.
3. Right-click the new folder.
4. Select **Properties**.
The <Folder Name> **Properties** window appears.
5. In the <Folder Name> **Properties** window, select the **Sharing** tab, and then select **Share...**
6. In the **File Sharing** window, in the text box, enter the user name of the service account user, and then select **Add**.

The new user appears in the list of users.

7. In the **Permission Level** column, select , and then select **Read/Write**.
8. Select **Share**, and then close the windows.
9. On the APM Connect server, select the Windows Start button to open the Windows Start menu.
10. In the **Search programs and files** box, enter `services`.

Services appears in the **Programs** list.

11. Select **Services**.
12. In the **Services** window, right-click the APM-CONTAINER service.
13. Select **Properties**.

The **APM-CONTAINER Properties (Local Computer)** window appears.

14. In the **APM-CONTAINER Properties (Local Computer)** window, select the **Log On** tab.
15. In the **Log On** tab, select **This account:**, enter the name of the service account user, and then select **OK**.

Results

The service account user has been created, authorized to run the Karaf service, and given access to the file shares on the SAP server.

Validate the APM Connect Administration Center License

To use the APM Connect Administration Center, you must validate your Administration Center license. Typically, validation is done automatically. However, user specific environment configuration, such as firewalls, may require manual validation. This topic describes how to manually validate your APM Connect Administration Center license.

Important: This step is required only if your license was not validated automatically when you [accessed the APM Connect Administration Center](#). If you did not receive the No token set error when accessing the APM Connect Administration Center, you can skip this procedure.

Procedure

1. If you receive the No token set error when accessing the APM Connect Administration Center, as shown in the following image, select **Validate your license manually**.

The **Validation request** screen appears.

2. In the **Validation request** window, in the **Validation message (put this message on the form of the next Link)** box, copy the text.
3. In the **Validation link (put the generated validation token to the next text Area)** section, select **link**.

If a browser opens, displaying the **Enter your validation request** page, skip to step 6.

-or-

If a browser does not open, proceed to the next step.

4. Complete the validation.

Response from selecting link	How to complete validation
A browser opens displaying Enter your validation request.	Proceed to the next step.
A browser does not open.	a. Right-click link , and then select copy link text .

Response from selecting link**How to complete validation**

- b. Via email or chat, send the link to a machine with internet access that is not behind the firewall, and then, on that machine, paste the link into a browser.

5. Paste or enter the text from the **Validation message (put this message on the form of the next Link)** box into the box in the browser, and then select **Get your validation token**.
6. Select .
7. In the **Copy your validation token**, copy the text in the box.
8. Return to the APM Connect Administration Center.
9. Paste the token text into the **Validate** box.
10. Select **Validate**.

Results

The license is validated manually.

Set Java Environment Variables

About This Task

The Java Environment variables are set automatically when you [run the APM Connect installer](#). However, if you need to update or reinstall Java without reinstalling APM Connect, complete these steps to configure Java on your APM Connect server.

Procedure

1. On the APM Connect server, navigate to `Control Panel\System and Security\System` to open system properties for the Windows machine.

The **View basic information about your computer** screen appears.

2. In the **Control Panel Home** pane, select **Advanced systems settings**.

The **System Properties** window appears, displaying the **Advanced** tab.

3. Select **Environment Variables...**

The **Environment Variables** window appears.

4. In the **System variables** section, select **New...**

The **New System Variable** window appears.

5. In the **Variable name** box, enter

`JAVA_HOME`

6. In the **Variable value** box, enter the path to the root jdk installation directory.

7. Select **OK**, and then close the properties window.

The Java environment variables are created.

Schedule ampctac DB Backup

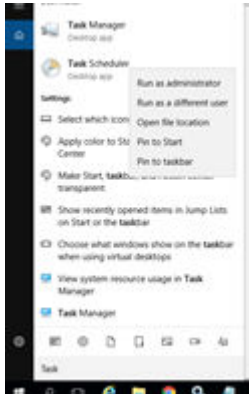
Schedule backup of ampctac DB on Daily basis

About This Task

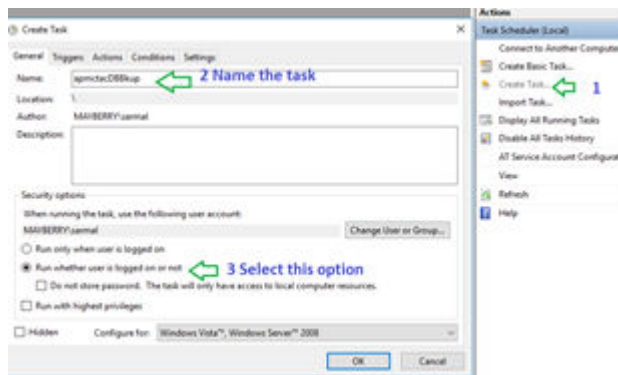
This process enables you to take daily backup of **apmctac** DB. In case data recovery is needed, the database can be restored from dump file. This setup retains backup files for apmctac DB for upto 30 days.

Procedure

1. Run the **Task Scheduler** as administrator.

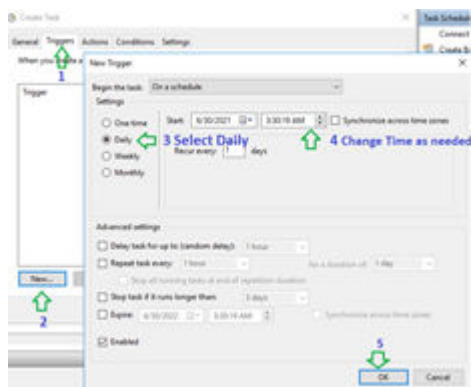


2. In the **Actions** section select the **Create Task** option

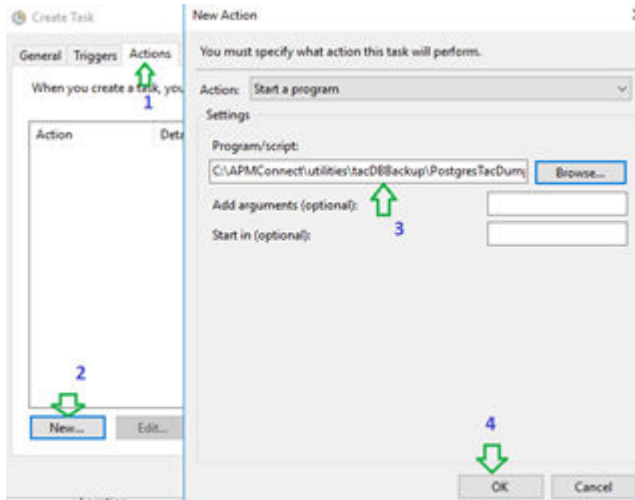


The **Create Task** window appears.

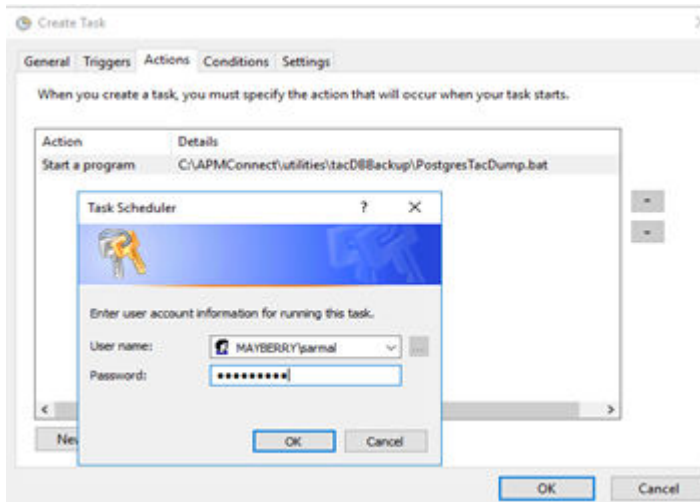
3. Select the **Trigger** tab to create a new trigger.



4. Select the **Actions** tab to configure the script.



5. Select **Browse** and navigate to the directory `C:\APMConnect\utilities\tacDBBackup\PostgresTacDump.bat` or copy and paste the path directly into the **Program/Script** field.
6. Select **OK**.
The **Task Scheduler** window appears, asking for credentials.
7. Enter the user credentials.

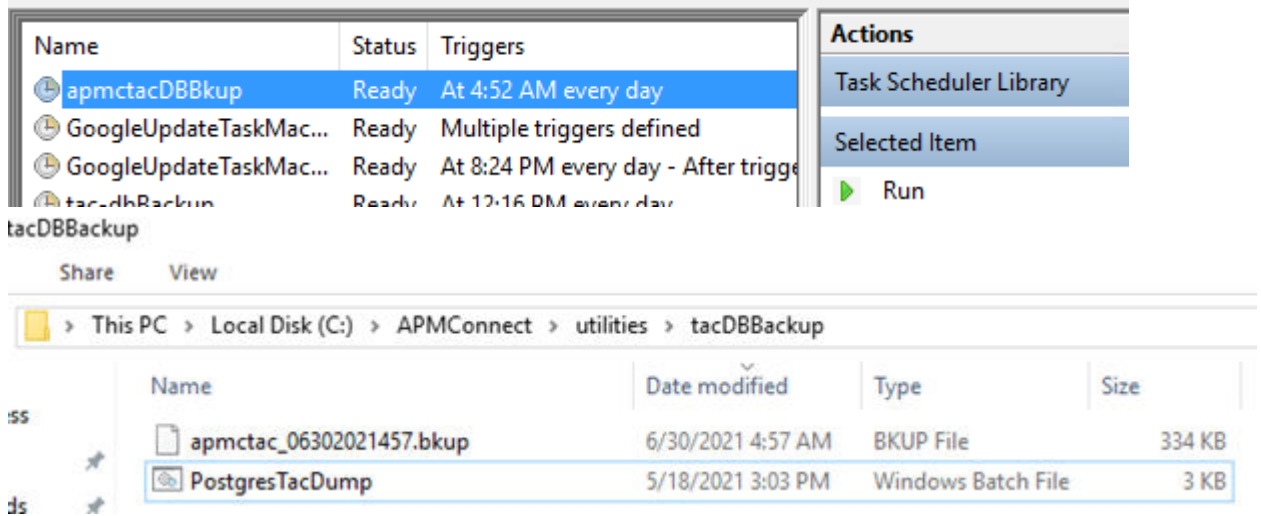


8. Select **OK**.

Tip: To make sure the task is scheduled correctly, run the task once and check if the backup is created in the `C:\APMConnect\utilities\tacDBBackup` directory.

If the backup file created is **0 byte**, then some parameters are incorrect. In this case, check if Postgres password, Hostname and Username are correct in `PostgresTacDump.bat`

Note: The `db_namename` in the script and URL DB name in TAC(Database parameter) must be the same.



The apmctac DB backup script is scheduled successfully.

Create APM Service User

Jobs in the APM Connect Administration Center are run by users. The apmService user is required to facilitate communication between APM Connect and GE Digital APM.

About This Task

Note: This step is completed automatically when you [run the APM Connect installer](#). These steps are included here for your reference if necessary.

Procedure

1. In the APM Connect Administration Center, from the **Menu** pane, in the **Settings** section, select the **Users** tab, and then select **Add**.
2. In the **Users** pane, enter the user information into the empty fields as necessary according to the following table, and then select **Save**.

Field	Description	Value
Login	Email login for user	apmService@meridium.com
First name	User first name	apm
Last name	User last name	service
Password	User password	apmConnect (default password)
Type	Type of data migration	Data Integration/ESB
Role	User role	Operation manager
Active	Select check box to signify active user	Must select check box

Results

The apmService user is created, and it appears in the list of users.

Import Adapter Jobs


A job is used to extract information from the source and push it into GE Digital APM. Before you can initiate a job using the APM Connect Administration Center, you must first load the jobs into the APM Connect Administration Center.

About This Task

Note: This step is needed only if the adapter jobs were not imported when you [ran the APM Connect installer](#).

Loading the jobs is accomplished by importing the jobs from a .zip file. This topic describes how to import jobs into the APM Connect Administration Center.

Procedure

1. In the **Menu** pane, in the **Conductor** section, select the **Job Conductor** tab.
2. In the **Job Conductor** menu, select **Add**.
The **Execution task** pane is enabled.
3. In the **Execution task** pane, in the **Label** box, enter a label for the job.
4. In the **Description** box, enter a description for the Job.
5. Select the **Active** check box.
6. In the **Job** section, select .
7. In the **Import generated code** window, select **Browse**, and then navigate to the folder containing the updated jobs package.
8. Depending on the type of deployment, select the file that contains the job based on the following tables.

Note: You must import every job, or run the respective wrapper job, in the table for the respective deployment.

Job Name	Description
CreateIntermediateRepository.zip	Creates the IR database.
Extraction_Wrapper_Maximo.zip	Wrapper job for all Maximo Adapters allowing easy configuration of multiple Maximo Adapters jobs.
AuditJob.zip	Receives the Audit Data from GE Digital APM. (APM Date Control and Success/Failures)

Figure 1: Maximo Adapter Jobs

Job Name	Description
CreateIntermediateRepository.zip	Creates IR database.
EncryptString.zip	Used to encrypt passwords.
Extraction_Wrapper.zip	Wrapper job for all SAP Adapters allowing easy configuration of multiple SAP jobs.
AuditJob.zip	Receives the Audit Data from GE Digital APM. (APM Date Control and Success/Failures)

Figure 2: SAP and SAP PI Adapter Jobs

9. On the **Import generated code** window, select **Launch upload**.

The **Project**, **Branch**, **Name**, **Version**, and **Context** boxes are automatically populated with appropriate values.

10. In the **Execution Server** list, select the server on which the task should be run.
11. Select **Save**.

The Adapter Job is imported into the APM Connect Administration Center.

12. Repeat steps 2 on page 35 through 11 on page 36 for every job.

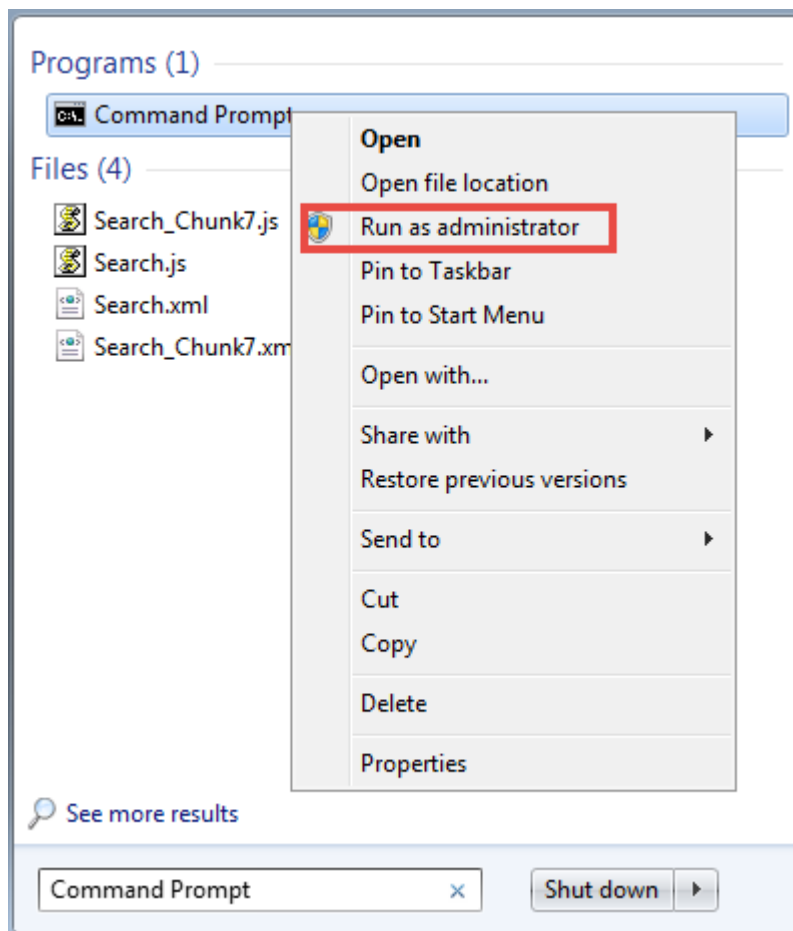
Results

Each Job is automatically categorized into the correct project.

Install APM Runtime Container

Procedure

1. On the APM Connect server, locate Command Prompt
2. Right-click on **Command Prompt**, and then select **Run as administrator**.

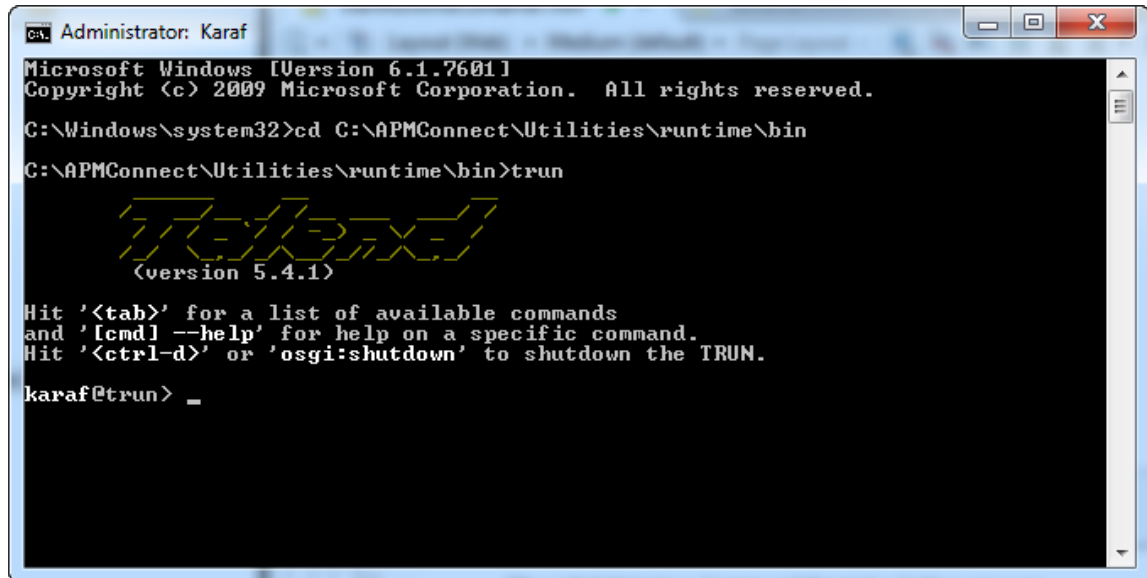


The **Administrator: Command Prompt** window appears.

3. Change the directory to: `C:\APMConnect\Utilities\runtime\bin.`
4. In the **Command Prompt**, after the new directory path, enter: `trun`.

A message appears in the Command Prompt, and another **karaf@trun>** prefix appears.

Note: When you first start Karaf, it takes a few minutes to load all of the commands. So, if you attempt to enter the `features:install` command in Step 5 and receive an error message in the Command Prompt, try the command again in a few minutes.



```
Administrator: Karaf
Microsoft Windows [Version 6.1.7601]
Copyright (c) 2009 Microsoft Corporation. All rights reserved.

C:\Windows\system32>cd C:\APMConnect\Utilities\runtime\bin
C:\APMConnect\Utilities\runtime\bin>trun

  TRUN
  (version 5.4.1)

Hit '<tab>' for a list of available commands
and '[cmd] --help' for help on a specific command.
Hit '<ctrl-d>' or 'osgi:shutdown' to shutdown the TRUN.

karaf@trun > _
```

5. In the Command Prompt, after **karaf@trun>**, enter `features:install wrapper`.

Another **karaf@trun>** prefix appears.

6. After **karaf@trun>**, enter `wrapper:install -s AUTO_START -n APM-CONTAINER -d APM-Container -D "APM Container Service"`.

A service wrapper feature is now installed into the Runtime Container, and a batch file is created in your local APM folder.

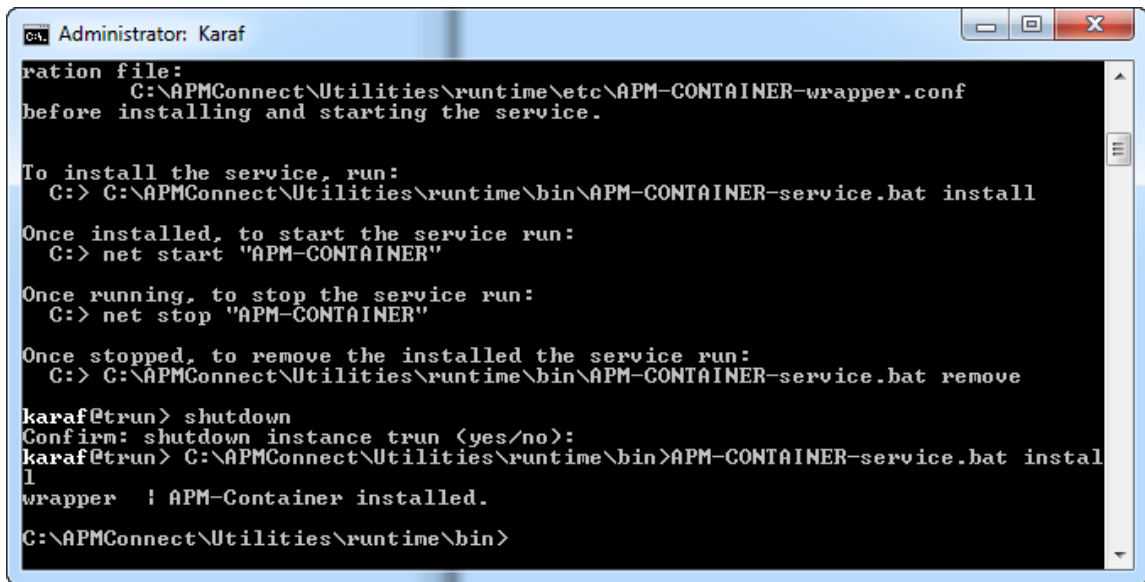
Tip: On your local computer, navigate to your APM Connect folder: `C:\APMConnect\runtime\deploy`. Notice that your local APM Connect folder now contains two new items: `APM-CONTAINER-service.bat` and `APM-CONTAINER-wrapper.exe`.

Another **karaf@trun>** prefix appears.

7. After **karaf@trun>**, enter `shutdown`, and then enter `yes` to confirm you want to shut down karaf.

Karaf is shut down, and another **karaf@trun>** prefix appears and the directory is changed to `C:\APMConnect\runtime\bin`

8. After `C:\APMConnect\runtime\bin`, enter `APM-CONTAINER-service.bat install`.



```
Administrator: Karaf
ation file:
  C:\APMConnect\Utilities\runtime\etc\APM-CONTAINER-wrapper.conf
before installing and starting the service.

To install the service, run:
  C:> C:\APMConnect\Utilities\runtime\bin\APM-CONTAINER-service.bat install

Once installed, to start the service run:
  C:> net start "APM-CONTAINER"

Once running, to stop the service run:
  C:> net stop "APM-CONTAINER"

Once stopped, to remove the installed the service run:
  C:> C:\APMConnect\Utilities\runtime\bin\APM-CONTAINER-service.bat remove

karaf@trun> shutdown
Confirm: shutdown instance trun <yes/no>:
karaf@trun> C:\APMConnect\Utilities\runtime\bin>APM-CONTAINER-service.bat instal
l
wrapper ! APM-Container installed.
C:\APMConnect\Utilities\runtime\bin>
```

The APM Container is installed, and a message appears indicating as such.

9. To start the APM Container, restart your machine.

Upgrade

Upgrade the APM Connect Base to V3.0.2

About This Task

The following table outlines the steps that you must complete to upgrade this module to V3.0.0.

These tasks may be completed by multiple people in your organization. However, we recommend that the tasks be completed in the order in which they are listed.

Note: As of the version of APM Connect released in the first quarter of 2019, you must keep these considerations in mind:

- Because of changes to the Test Connection function, the CMMS_ID and the System Name in the EAM System record must be the same. Before upgrading, make sure you update the EAM System record so these values match.
- If you are using multiple cultures from a single source system, existing data must be updated before you upgrade.
- If you are updating from a significantly older APM Connect version that uses `RunDataLoadersRoute.jar` or `StageDataLoaderService.jar`, remove both files.

Procedure

Upgrade from any version V1.0.0 through V2.0.0 to APM Connect Base V3.0.0 and above

1. [Uninstall APM Connect](#).
2. Complete the steps to [deploy the APM Connect Base](#) for the first time.

Note: For information about the APM Connect versions corresponding to GE Digital APM versions, refer to the [APM Connect Version Compatibility Table](#) on page 114.

Chapter 3

Admin

Topics:

- [Access the APM Connect Administration Center](#)
- [Configure the APM Connect Administration Center](#)
- [Authorize Users for Projects](#)
- [Set User Permissions](#)
- [Configure Logging](#)
- [Deploy Audit Job for Adapters](#)
- [Create the Intermediate Repository Database](#)
- [Configure Source System Custom Field Mappings or Default Values](#)

Access the APM Connect Administration Center

Using the APM Connect Administration Center, you can run extraction and load jobs. Before you can begin running jobs, you must set up the APM Connect Administration Center. This topic explains how to access and deploy the APM Connect Administration Center for the first time.

Procedure

1. Open a web browser, and then enter the following URL into your web browser: `http://localhost or hostname provided:8080/apmconnect/`.
2. In the **Data Parameters** window (if it appears, refer to the Step 3), in the **Password** box, enter `postgres`, and then select **OK**.
3. If the TAC license file was not provided during the install step you will get the **Database Parameters** window to setup the license. If already provided you will get the APM Connect **Login** Page (Check step 5).
4. Select .

The **Database parameters** window appears, and a check is performed by the APM Connect Administration Center.

Important: If your license does not validate, you can [validate your license manually](#).

5. If your license validates, in the **Database parameters** window, select **Go to login page**.

The **Login** page appears.

6. In the **Login** window, enter the required information and then select **Login**.

- In the **Login** box, enter the default username: `admin@company.com`.
- In the **Password** box, enter the default password: `admin`.

The APM Connect Administration Center is successfully deployed, and the APM Connect Administration Center **Welcome** page appears.

7. Add an APM Connect Service User using the following steps:

a) Select **Users** in the **Menu** Pane, and then select **Add**.

b) Add the following information:

- Login ID – preferably an e-mail id. For example, `apmc@company.com`
- First Name and Last Name – Add an identifier name
- Password – Preferably `admin` or user defined
- Type – Data Integration/ESB
- For the Role select all the roles except **Auditor**

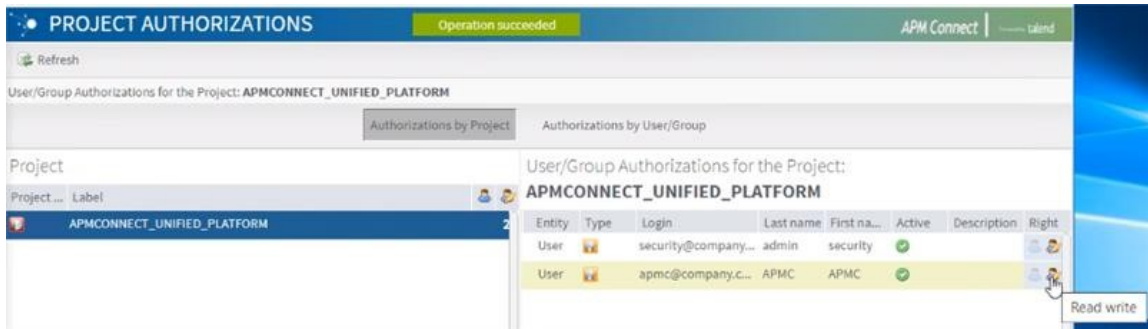
c) Select **Save**.

8. Logout of the APM Connect Administration Center and then log back in as the Service user that you setup in Step 7 (For example, `apmc@company.com/admin`).

9. Select a Project on the **Welcome** page.

Note: If no project is displayed you can add a new project titled **APMCONNECT_UNIFIED_PLATFORM** with **Project Type** value set as `Data Integration/ESB` and **Storage** value set as `None`.

10. In the **Menu** pane select **Project Authorizations**



11. In the **Project** section select the project **APMCONNECT_UNIFIED_PLATFORM**, and provide the Read and Write access to the newly created service user.
12. In the **Menu** pane select **Servers** to check the execution server details.
13. If no Server is displayed, then add a server with **Label** value set as `JobServer` and other values configured as shown below:

Execution server

Label:

Description:

Host:

Time zone:

Command port:

File transfer port:

Monitoring port:

Process message port:

Timeout on unknown state (s):

Username:

Password:

Use SSL:

Active:

Talend Runtime

14. Select **Save**.
15. In the **Menu** pane select **Job Conductors** to check if any jobs are deployed.

Note: If jobs are not deployed then the APM Connect jobs provided need to be deployed manually.

Configure the APM Connect Administration Center

This topic describes how to configure the APM Connect Administration Center.

About This Task

Depending on whether you are using the EAM Adapters or the Data Loaders, configuring the APM Connect Administration Center requires defining parameters for some or all of the following components: Commandline, Job conductor, Monitoring, and Log4j.

Procedure

1. If you are not already in the APM Connect Administration Center, access it via <http://localhost:8080/apmconnect/>.
2. If prompted, log in to the APM Connect Administration Center.
3. In the **Menu** pane, in the **Settings** section, select the **Configuration** tab.

The **Configuration** pane appears.

4. Select the **Job conductor (7 Parameters)** group to expand the workspace.
5. Using the following table as a guide, enter the recommended parameters.

Note: You can accept the default values of parameters not listed in the table. Make sure that the folders already exist.

Parameter	Description	Recommended or Default Value
Generated jobs folder	The path to the folder with the Job execution archives.	C:\APMConnect\Logs\generated_jobs
Tasks logs folder	The path to the folder with the Job execution logs.	C:\APMConnect\Logs\execution_logs

6. Select the **Servers** group to expand the workspace.
7. In the workspace, select **Add**, and then select **Add Server**.
8. In the **Execution server** section, configure the server.
 - a) Enter the name of the administrator host in the **Label**, **Description**, and **Host** boxes.
 - b) Select the **Meridium Runtime** check box.
 - c) Select **Save**.

The server configuration is saved.
 - d) Select the server you just added to verify the configuration.

All of the server indicators should be green.
9. Select the **Monitoring (2 Parameters)** group to expand the workspace.

Note: Configuring this parameter is optional.
10. Select the **Log4j (4 Parameters)** group to expand the workspace.
11. Using the following table as a guide, enter the necessary parameters.

Parameter	Description	Recommended or Default Value
Technical file appender	The path to the technical log file of the APM Connect Administration Center.	C:/APMConnect/Utilities/Tomcat/logs/technical.log
Technical log threshold	The level of logs you want to append.	WARN
Business log file path	The path to the business log file of the APM Connect Administration Center.	C:/APMConnect/Utilities/Tomcat/logs/business.log
Technical logstash appender	The host and port corresponding to the Logstash instance.	localhost:8050

Results

The APM Connect Administration Center parameters are configured.

Authorize Users for Projects

Before a user can begin work on a specific project, that user must be authorized to work on that project. Each project can have multiple users with differing roles. Users can also be authorized for multiple projects. This topic explains how to authorize a user for a project.

Procedure

1. In the **Menu** pane, in the **Settings** section, select **Project authorizations**.

The **Project Authorizations** workspace appears displaying the **Project** section which lists all the projects to which you can add users and the **User Authorizations for the Project: <name>** section which lists all users that can be added to the project.

2. From the **Project** list, select the project to which you want to add a user.

3. To give a user read permissions only, in the **Right** column in the row for that user, select the  button.

4. To give a user read and write permissions, in the **Right** column in the row for that user, select the  button.

Tip: The icons in the **Right** column will be appear in a lighter color if the user is not authorized for a specific action, and be colored if the user has the required permissions.

The user is now authorized for the project.

Set User Permissions

To begin using the APM Connect Administration Center to run data extractions, or Jobs, you must first give the admin user all the user roles.

Before You Begin


[A user must be authorized for a project](#) before they can view or change sections associated with a project.

Procedure

1. In the **Menu** pane, in the **Settings** section, select the **Users** tab.

2. Select the user that you want to be the administrator.

The **Data** section is activated.

3. In the **Data** section, next to the **Role:** box, select .
4. In the **Role Selection** window, select each check box to assign the user all roles, or select the box of the role(s) you want to assign the user, based on the following table:

Important: To access the Job Conductor, you must designate at least one user the role of Operation Manager.

Role	Read Permissions by Module	Write Permissions by Module
Administrator	None.	License, Configuration, Users, Projects, Rights Management, Backup, Notifications, Software Updates
Operations Manager	Projects, EBS Publisher, Service Activity Monitoring, Authorization, Service Registry, Studio, Repository Browser	Configuration, Lock, Notifications, Servers, Job Conductor, ESB Conductor, Execution Plan, Monitoring Audit BRMS (Drools), Service Locator
Designer	Configuration, Projects, Servers, Job Conductor, EBS Conductor, EBS Conductor, EBS Publisher, Execution Plan, Monitoring	Execution Plan, Audit, BRMS (Drools), Service Locator
Viewer	Servers, Job Conductor, Execution Plan, Audit, Studio, Repository	None.

5. Select **Validate**, and then select **Save**.

Results

The user permissions are set.

Configure Logging

APM Connect uses Apache log4j version 2 to log events. It includes a default xml configuration for logging events. You can personalize logging by using an xml-based custom configuration file, which can be passed through the JVM argument parameter in the Job Conductor task, `Dlog4j`.

`configurationFile={path to custom xml file}`. For more details, refer to the [apache logging framework](#).

Deploy Audit Job for Adapters


The Audit job helps to get audit data, including Date Control and Success/Failure records from GE Digital APM. An Audit job can be scheduled to run for specified minutes or hours, or on a daily basis in the APM Connect Administration Center.

Set Up the Audit Job

Before You Begin

- APM Connect must be installed.
- Context file must be set up and have details of IR, GE Digital APM, and ActiveMQ.

Procedure

1. [Access the APM Connect Administration Center.](#)
2. In the **Menu** pane, in the **Conductor** section, select the **Job Conductor** tab.
3. In the **Job Conductor** menu, select **Add**.
The **Execution task** pane is enabled.
4. In the **Execution task** pane, in the **Label** box, enter a label for the job.
5. In the **Description** box, enter a description for the Job.
6. Select the **Active** check box.
7. In the **Job** section, select .
The **Import generated code** window appears.
8. Select **Browse...** and then navigate to the folder containing the updated jobs package.
9. Select **AuditJob.zip**, and then select **Launch upload**.
The job is imported into the **Job Conductor**.
10. Configure the context file to identify the details of the IR, GE Digital APM, and APM ActiveMQ.
11. Modify the <Context_File_PATH> value in the **Job Conductor** context parameters to point to the context file for the job.
12. Schedule a trigger or run the job.

Results

The Job Conductor indicates that the job ran successfully or the trigger is active.

Configure the Context File

Before You Begin

You should have imported the audit job.

About This Task

The context file provides the audit job with the information it needs to connect to ActiveMQ, IR, and GE Digital APM.

Procedure

1. Navigate to the following folder: `C:\APMConnect\Config\<system>`.
2. Modify `ContextFile.xml` to indicate the values for your system.

Results

Parameter	Description	Default or Recommended Value
CONFIG_FILE_PATH	The path to the context file used for extraction.	Enter your unique value (for example, <code>C:\APMConnect\Config\ContextFile.xml</code>).
IR_HOST	Intermediary Repository host name.	Enter your unique value.
IR_DATABASE	Database for the dinoloader job.	Enter your unique value.

Parameter	Description	Default or Recommended Value
IR_USERID	Intermediary Repository username.	Enter your unique value.
IR_PASSWORD	Intermediary Repository password.	Enter your unique value.
IR_SCHEMA	The schema in which the IR database will be created.	The default value is public.
IR_PORT	Intermediate Repository port.	Default value is 5432.
APM_USERID	The APM user ID.	Enter your unique value.
APM_PASSWORD	The APM password.	Enter your unique value.
APM_DATASOURCE	The name of the APM data source to which the data will be exported.	This is a required parameter. Enter your unique value.
APM_API_APP_SERVER	The name of the APM API server.	This is a required parameter. Enter your unique value.
APM_APP_SERVER	The name of the APM server.	This is a required parameter. Enter your unique value.
TRUSTSTORE_FILE	The directory path to the dinoloader SSL configuration file.	Enter your unique value.
TRUSTSTORE_PASSWORD	The password for the keystore files.	Enter your unique value.
USE_SSL	Determines if SSL is used.	True: will use SSL. False: will not use SSL.
QUEUE_HOST	The host name of the APM ActiveMQ.	Enter your unique value.
QUEUE_PORT	APM ActiveMQ port.	Default port is 61616.
QUEUE_USER	APM ActiveMQ user.	Enter your unique value.
QUEUE_PASSWORD	APM ActiveMQ password.	Enter your unique value.
CMMS_ID	Enter your EAM system ID	Enter your unique value.

Create the Intermediate Repository Database

This topic describes how to set up a repository in preparation to run your first job.

Before You Begin

Important: If you are using both the Data Loaders and an EAM Adapter, you need only one Intermediate Repository Database.

- Before you can prepare and deploy the repository, you must import the CreateIntermediateRepository job.
- If you are using the Data Loaders and the EAM Adapters, you must deploy and run the CreateIntermediateRepository job for each set of adapters.
- For SAP adapters, you must first run the Static Data job.
- For multiple EAM systems, the context file parameter values for a specific type of system must be identical except for the value of CMMS_ID.

- For multiple EAM systems, the Intermediate Repository Connection parameters have the same values for all adapters connected to this GE Digital APM system.

Important: Each time you run the CreateIntermediateRepository you recreate the GE Digital APM database to the baseline settings, removing any previous configuration. When you run the addSourceSystem job, the job will add new source systems based on the CMMS_ID and the SOURCE_SYSTEM_TYPE. If the job is run an additional time with the same configuration, it will reset the control values of an existing source system.

Procedure

1. Log in to the APM Connect Administration Center web application.

Note: The user logging in must have access to the Job Conductor by being designated the Operations Manager role. By default, users designated as administrators do not have Job Conductor permissions.

2. In the **Job Conductor** workspace, in the appropriate project, select the CreateIntermediateRepository job.

Note: For ServiceMax, this job is called CreateIntermediateRepository_ServiceMax.

3. Select **Context parameters**.

The **Context parameters** section appears.

4. Configure the following parameter.

Context Parameter	Description
CONFIG_FILE_PATH	<p>The file path to context files for the jobs.</p> <p>Important:</p> <ul style="list-style-type: none"> • You must change the default value to reflect the actual path to your configuration file. • CMMS_ID and SOURCE_SYSTEM_TYPE must be set in the context file.

5. Select **Run**.

If you are configuring a single system, you have completed your configuration.

The intermediate repository database is created for the project.

If you are configuring multiple EAM systems, perform the remaining steps in this topic.

6. In the **Job Conductor** workspace, in the appropriate project, select the addSourceSystem job.
7. Configure the following parameter.

Context Parameter	Description
CONFIG_FILE_PATH	<p>The file path to context files for the jobs.</p> <p>Important:</p> <ul style="list-style-type: none"> • You must change the default value to reflect the actual path to your configuration file. • CMMS_ID and SOURCE_SYSTEM_TYPE must be set in the context file.

8. Select **Run**.

9. Repeat steps 6 on page 47 through 8 on page 47 for all adapters.

Configure Source System Custom Field Mappings or Default Values

APM Connect documents a baseline set of fields that are considered standard in the APM to SAP Notification Creation integration with SAP. Additionally, there is capability to configure these and other

fields to be included in the Notification Creation process. For information on the available fields to add to mapping, refer to the [List of attributes that can be added to Notification Creation from APM to SAP](#) topic. This topic describes how to configure additional baseline fields or make changes to default values.

Before You Begin

To successfully perform this task, you must have the following:

- Administrative rights to the APM Connect database from which you are retrieving the field values or setting the default values.
- A database tool, such as DBeaver or DBVisualizer.

About This Task

There are times when you need to have information that is stored in GE Digital APM displayed in your source system database. To achieve this goal, you need to modify tables used by GE Digital APM to send data to your source system.

Note: If Custom field mappings are needed, or fields that are not in this list, customization options exist with our Integration Center of Excellence engagement process.

The following procedure describes how to either configure a mapping between GE Digital APM and your source system or to set a default in your source system from GE Digital APM.

The following image is an example of the southbound_mapping_control table as displayed by a database tool.

southbound_mapping_control_id	apm_field_name	target_field_name	target_field_map_name	mapping
1	MI_REC_NOTIF_TYPE_C	NOTIF_TYPE	NOTIF_TYPE	true
2		TASK_DETERMINATION	TASK_DETERMINATION	false
3		SENDER	SENDER	false
4		ORDER_ID	ORDER_ID	false
5		REFOBJECTTYPE	REFOBJECTTYPE_NOTIFHEADER	false
6		REFOBJECTKEY	REFOBJECTKEY_NOTIFHEADER	false
7		REFRELTYPE	REFRELTYPE_NOTIFHEADER	false
8	EquipmentID	EQUIPMENT	EQUIPMENT_NOTIFHEADER	true
9	LocationID	FUNCT_LOC	FUNCT_LOC_NOTIFHEADER	true
10		ASSEMBLY	ASSEMBLY_NOTIFHEADER	false
11		SERIALNO	SERIALNO_NOTIFHEADER	false
12		MATERIAL	MATERIAL_NOTIFHEADER	false
13		DIVISION	DIVISION_NOTIFHEADER	false
14		SALES_ORG	SALES_ORG_NOTIFHEADER	false
15		DISTR_CHAN	DISTR_CHAN_NOTIFHEADER	false
16		SALES_OFFICE	SALES_OFFICE_NOTIFHEADER	false
17		SALES_GRP	SALES_GRP_NOTIFHEADER	false
18	MI_REC_SHORT_DESCR_CHR	SHORT_TEXT	SHORT_TEXT_NOTIFHEADER	true
19	MI_REC_PRIORITY_C	PRIORITY	PRIORITY_NOTIFHEADER	true
20		DESDATE	DESDATE_NOTIFHEADER	false
21		DESDTIME	DESDTIME_NOTIFHEADER	false
22		DESENDDATE	DESENDDATE_NOTIFHEADER	false
23		DESENDTM	DESENDTM_NOTIFHEADER	false
24		DEVCEDATA	DEVCEDATA_NOTIFHEADER	false
25		PM_WKCTR	PM_WKCTR_NOTIFHEADER	false
26		PURCH_NO_C	PURCH_NO_C_NOTIFHEADER	false
27		PURCH_DATE	PURCH_DATE_NOTIFHEADER	false
28		PLANPLANT	PLANPLANT_NOTIFHEADER	false

Note: This feature is not available for creating work orders.

Procedure

1. Using a database tool, navigate to the GE Digital APM database you want to configure.
2. In the database navigation, in the **Tables** folder, select **southbound_mapping_control**.
3. Navigate to the **target_field_name** and **target_field_map_name** column you want to configure.
4. Configure the field mapping or default value for your source system.

Item to configure **How to configure**

Field mapping In the **apm_field_name** column, enter the name of the GE Digital APM field that contains the value to apply in the source system, and then set the value in the **mapping_enabled** column to `true`

For example, if you want to set the source system value of REPORTEDBY in map table REPORTEDBY_NOTIFHEADER from the GE Digital APM field CurrentUserID, the table would resemble the following when you complete your update.

id	southbound_mapping_control_id	apm_field_name	target_field_name	target_field_map_name	mapping_enabled	target_default_value	cmms_id
31		STRMLFNDATE	STRMLFNDATE	STRMLFNDATE_NOTIFHEADER	false		PRF-800
32		STRMLFNTIME	STRMLFNTIME	STRMLFNTIME_NOTIFHEADER	false		PRF-800
33	CurrentUserID	REPORTEDBY	REPORTEDBY	REPORTEDBY_NOTIFHEADER	true		PRF-800

Important: If, after configuring the mapping, you see a blank value for the field, make sure the value you entered in the **apm_field_name** column is correct.

Default value In the **target_field_default** column, enter the value you want to be the default in your source system and set the value in the **mapping_enabled** column to `false`.

Results

Your source system mappings or default values are configured.

Chapter 4

Studio

Topics:

- [Configure the APM Connect Administration Center for the Studio](#)
- [Install the Studio](#)

Configure the APM Connect Administration Center for the Studio

About This Task

Important: This step is required only if you have the APM Connect Studio license. If you are deploying APM Connect Base with a Basic or Plus License, skip this procedure.

Procedure

1. Open a web browser.

Tip: APM Connect is most compatible with Google Chrome or Mozilla Firefox web browsers. It is not recommend using Internet Explorer to access the APM Connect Administration Center.

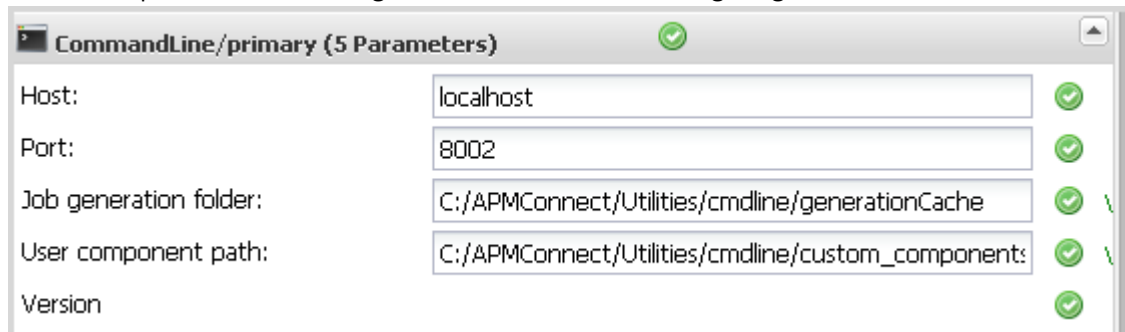
2. Enter the following URL into your web browser: `http://localhost:8080/apmconnect/`.
3. If prompted, log in to the APM Connect Administration Center.
4. In the **Menu** pane, in the **Settings** section, select the **Configuration** tab.

The **Configuration** pane appears.

5. Select the **CommandLine/primary (5 Parameters)** group to expand the workspace.
6. According to recommendations in the information in the following table, enter the necessary parameters.

Parameter	Description	Recommend or Default Value
Host	The IP address of the CommandLine.	localhost
Port	The port number on which the CommandLine is queried.	8002
Job generation folder	The path to the folder where Jobs are generated.	<root:>\APMConnect\Utilities\cmdline\generationCache
User component path	The path to the folder where user components are stored.	<root:>\APMConnect\Utilities\cmdline\custom_components

The default parameters are configured as shown in the following image.



Install the Studio

About This Task

Important: This step is required only if you have the APM Connect Studio license. If you are deploying APM Connect Base with a Basic or Plus License, skip this procedure and proceed to the next step in the [APM Connect Base deployment workflow](#).

Procedure

1. On the machine on which you installed APM Connect, access the Talend Studio installation package.
2. Open the file `TalendStudioInstall.exe`.
3. In the **Setup-Talend Studio** window, select **Next**.
The **License Agreement** window appears.
4. Read the entire license agreement, and then select one of the following options:
 - **I accept the agreement:** If you agree to the terms of the license agreement and want to continue. These instructions assume that you want to continue.
 - **I do not accept the agreement:** This option is selected by default. If you do not agree to the terms of the license agreement and do not want to continue, select **Cancel** to exit the installer.
Next is enabled.
5. Select **Next**.
The **Select Destination Location** screen appears.
6. Select **Next**.
The **Select Components** screen appears.
7. Select the **Add Start Menu Entry** box, then select the **Add Desktop Icon** box, and then select **Next**.
8. Select **Next**.
9. In the **Select Start Menu Folder** window, select **Next**.
10. In the **Ready to Install** window, select **Install**.
The **Installing** screen appears, displaying an installation progress bar.
11. When the installation completes, in the **Completing the Talend Studio Setup Wizard** window, select **Finish**.

Results

The installation is complete, and Talend Studio desktop icon is available.

Chapter 5

Data Loaders

Topics:

- [General Information](#)
- [APM Family Data Loader](#)
- [Taxonomy Data Loader](#)
- [Work History Data Loader](#)
- [Equipment and Functional Location Data Loader](#)

General Information

Requirements for APM Connect Data Loaders

All APM Connect Data Loaders have the same mapping and security settings requirements.

Important: To achieve best performance in the ingestion process, APM Connect recommends ingestion of maximum file size to be 10 MB. However, there are circumstances that may require larger files for ingestion. For such use cases, APM Connect allows file sizes up to 30 MB. If the file size exceeds 30 MB, an error message appears indicating that maximum file size has reached and the file is not processed. Additionally, there will be a check for file sizes in uncompressed state to ensure that file size does not exceed 100 MB.

Note: File size, and data model complexity are two variables of data ingestion performance. Ingesting smaller files and lower complexity data models will assist in improving the performance.

Security Settings

The Security User performing the data load operation must be associated with either the MI Data Loader User or MI Data Loader Admin Security Role.

Mapping

The Data Loaders map the datasheet columns in the Excel workbook to fields in GE Digital APM families by field ID. The captions may be changed as needed, but do not change the field IDs.

About Populating Site Reference Data

The APM Family Data Loader can be used to populate the Site Reference on Equipment and Functional Location records in GE Digital APM.

About This Task

The APM Family Data Loader populates the **ENTY_KEY** system field and the **MI_SITE_KEY** system field associated with the Site Reference value to be populated. On asset records, the Site Reference is stored in the **MI_SITE_KEY** field, a system field in GE Digital APM. The APM Data Loader uses the Site Name (**MI_SITE_NAME**) to translate the value to the corresponding Site Key and populate the **MI_SITE_KEY** field; therefore, you do not need to know the key to be able to populate the site reference. This functionality is important because this value can change from one database to another.

Procedure

1. On the data worksheet, add a column that contains **MI_SITE_NAME** in the column name. For example if you are working with a relationship, where a distinction needs to be made regarding which family is associated with each column, then the column name will be prefaced with the Family ID. As shown in the following image, the column name might take the form MI_EQUIP000 | MI_SITE_NAME, where MI_EQUIP000 is the Family ID.

C	D	E
Technical Number	CMMS System	Site Reference Name
000 MI_EQUIP000 EQUIP_TECH_NBR_C	MI_EQUIP000 MI_EQUIP000_SAP_SYSTEM_C	MI_EQUIP000 MI_SITE_NAME
DC-PMP-574000	Houston, TX	Houston, TX

2. Enter the site name to designate the site by which the asset record, once loaded into GE Digital APM, will be filtered.
3. Continue populating the source workbook, and then run the data loader.

APM Family Data Loader

The APM Family Data Loader General Loading Strategy

This section describes any prerequisites to loading the data and the order in which the data will be loaded.

Before You Begin

1. Determine Load Type: Single Family or Two Related Families.
The APM Family Data Loader supports loading records into a single family, or you can load records into one family and records into another family and link the two records together. The type of data that you want to load will determine the sample template with which you will start.
2. Determine What Families and Relationships to Populate.
You can determine which families are available and how families are related in Family Management. To access Family Management:

Procedure

1. Determine if you want to load data into a single family or into two families that are related to each other.
2. Access a sample APM Family Data Loader source file based on the type of load determined in step 1 on page 55.
3. Determine what families and or relationships you want to populate using the APM Family Data Loader.
4. Export the metadata that reflects the metadata definition for the family or families into which you want to load data.
5. Populate the **Configuration** worksheet.
6. Populate the column headers of the **<Data>** worksheet using the exported metadata.
7. As needed, modify the worksheets to populate unit of measure to apply the correct unit of measure to any of the numeric fields.
8. As needed, modify the worksheets to populate time zones to convert any date or time fields to the correct time zone.

About the APM Family Data Loader Workbook Layout and Use

This section provides a high-level overview and explanation of how the data loader workbook is constructed.

In order to import data using the APM Family Data Loader, GE Digital APM provides an Excel workbook that must be used to perform the data load.

The following table lists the worksheets that are included in the `APM Family.xlsx` workbook.

Worksheet	Description
Configuration	The Configuration worksheet is needed to describe the type of data that you will be loading and how that data should be handled during the data load.
<data>	Where you specify the actual data to be loaded.

Each worksheet in the APM Data Loader workbook contains field values that can be mapped to the appropriate APM Family Data Loader family/field.

Configuration Worksheet

The Configuration worksheet tells the APM Family Data Loader what types of data are being loaded and how the data is to be loaded, and is standard for all data loads regardless of the type of data that you are loading. The following table outlines the options that are valid or the values that are expected in each of the columns on the Configuration worksheet.

Field Caption	Field ID	Data Type (Length)	Comments
Number of Rows to Chunk	OPTION_NUMBER_ROWS_TO_CHUNK	Character	Option to break-up or chunk data.
Load Data From Worksheet	LOAD_DATA_WORKSHEET	Boolean	Identifies if data from the corresponding worksheet identified in the Data Worksheet ID column will be loaded or not. <ul style="list-style-type: none"> • True: The corresponding worksheet will be processed. • False: The corresponding worksheet will not be processed.
Data Worksheet ID	DATA_WORKSHEET_ID	Character	This column contains the name of the <data> worksheet where the actual data is located. It needs to have the same name as the <data> worksheet in the data loader workbook.
Batch Size	BATCH_SIZE	Character	Modifying this field is required to determine the number of records processed in each batch. Enter the batch size you want, and the Data Loader will process that many records per batch. For example, if you want to use a batch size of 100, enter 100, and the data loader will process 100 records per batch. Note: The recommended batch size is 100. If the Batch Size column is removed from the source workbook, the data loader will default to a batch size of 100. In addition to processing the data in batches, the log file reports progress by batch.

Field Caption	Field ID	Data Type (Length)	Comments
Primary Family ID	PRIMARY_FAMILY_ID	Character	<p>Depending on the type of data that you are working with, this will contain the Relationship Family ID or the Entity Family ID. You can also allow the data in source file to determine the Family ID by encapsulating the Field ID that contains the Family ID data in brackets (<>).</p> <p>For example if in the <data> worksheet there is a column with an ID of PRIMARY_FAMILY_ID, where each row contains the corresponding Family ID, then in this column you should put the value of <PRIMARY_FAMILY_ID>.</p> <p>If the Family ID in the Meridium, Inc. metadata contains spaces, then you have to use this feature.</p>
Primary Family Key Fields	PRIMARY_FAMILY_KEY_FIELDS	Character	<p>This column contains the Field IDs associated with the Primary Family that are used to uniquely identify a record. If more than one field is to be used, then each Field ID needs to be separated by a (Pipe) character. In the case where you are loading data into a relationship, if no keys fields exist or are used, use the <none> constant.</p> <p>If the Primary Action is ACTION_INSERTONLY, then no key fields need to be specified, so you can use the <none> constant.</p>
Family Type	FAMILY_TYPE	Character	<p>The value in this column should be Entity or Relationship depending on the type of data that is being loaded.</p>
Predecessor Family ID	PRED_FAMILY_ID	Character	<p>When the Family Type is Relationship, this column will contain the value of the Entity Family ID that is the predecessor in the relationship. Otherwise, it should contain the <none> constant. You can also use the data in each of the rows to determine the Predecessor Family ID.</p>

Field Caption	Field ID	Data Type (Length)	Comments
Predecessor Family Key Fields	PRED_FAMILY_KEY_FIELDS	Character	<p>This column contains the Field ID or IDs associated with the Predecessor Family that are used to uniquely identify the predecessor record. If more than one field is to be used, then each Field ID needs to be separated by a (Pipe) character.</p> <p>If the Predecessor Action is ACTION_INSERTONLY, then no key fields need to be specified, so you can use the <none> constant.</p>
Successor Family ID	SUCC_FAMILY_ID	Character	<p>When the Family Type is Relationship, this column will contain the value of the Entity Family ID that is the successor in the relationship. Otherwise, it should contain the <none> constant. You can also use the data in each of the rows to determine the Successor Family ID.</p>
Successor Family Key Fields	SUCC_FAMILY_KEY_FIELDS	Character	<p>This column contains the Field ID or IDs associated with the Successor Family that are used to uniquely identify the successor record. If more than one field is to be used, then each Field ID needs to be separated by a (Pipe) character.</p> <p>If the Successor Action is ACTION_INSERTONLY, then no key fields need to be specified, so you can use the <none> constant.</p>

Field Caption	Field ID	Data Type (Length)	Comments
Primary Action	PRIMARY_ACTION	Character	<p>The value in this column will determine the action that will be applied to the Primary Family records. If the Family Type is Entity, then the possible values are:</p> <ul style="list-style-type: none"> • ACTION_INSERTONLY • ACTION_INSERTUPDATE • ACTION_UPDATEONLY • ACTION_DELETE • ACTION_PURGE <p>Deleting a record and purging a record will both delete the current record, the difference being that the purge action will delete the record and all of the links or relationships tied to that record. The delete action will simple attempt to delete the record, and if it is related to another record, the delete will fail. If The Family Type is Relationship, then the possible values are:</p> <ul style="list-style-type: none"> • ACTION_INSERTONLY • ACTION_INSERTUPDATE • ACTION_UPDATEONLY • ACTION_DELETE
Predecessor Action	PRED_ACTION	Character	<p>The value in this column will determine the action that will be applied to the Predecessor Family records. The possible values are:</p> <ul style="list-style-type: none"> • ACTION_INSERTONLY • ACTION_INSERTUPDATE • ACTION_UPDATEONLY • ACTION_DELETE • ACTION_PURGE • ACTION_LOCATE <p>If The Family Type is Entity then the values needs to be</p> <ul style="list-style-type: none"> • ACTION_NONE

Field Caption	Field ID	Data Type (Length)	Comments
Successor Action	SUCC_ACTION	Character	<p>The value in this column will determine the action that will be applied to the Successor Family records. The possible values are:</p> <ul style="list-style-type: none"> • ACTION_INSERTONLY • ACTION_INSERTUPDATE • ACTION_UPDATEONLY • ACTION_DELETE • ACTION_PURGE • ACTION_LOCATE <p>If The Family Type is Entity then the values needs to be</p> <ul style="list-style-type: none"> • ACTION_NONE
Insert with Null Values?	OPTION_INSERT_ON_NULL	Boolean	When setting field values on a new record, if a value coming across is NULL, the field values will be set to NULL if this option is set to True.
Update with Null Values?	OPTION_UPDATE_ON_NULL	Boolean	When setting field values on an existing record, if a value coming across is NULL, the field values will be set to NULL if this option is set to True.

Field Caption	Field ID	Data Type (Length)	Comments
Replace an Existing Link?	OPTION_REPLACE_EXISTING_LINK	Boolean	<p>The Replace Existing Relationship option is used to determine how a relationship is to be maintained by its cardinality definition.</p> <p>For example, the relationship Location Contains Asset that is defined in the Configuration Manager. It has a cardinality defined as Zero or One to Zero or One, has a Location LP-2300, and contains the Asset P-2300. If, in the data load, you assign the Asset P-5000 to be contained in the Location LP-2300, and you have set the Replace Existing Link property to True, then the data loader will link P-5000 to LP-2300 and unlink P-2300 from LP-2300. This assumes that P-5000 is not currently linked to another location. The same is true for a relationship that is defined as Zero or One to Zero or Many, or Zero or Many to Zero or One.</p>
Allow Change of Family?	OPTION_ALLOW_CHANGE_OF_FAMILY	Boolean	<p>Allows the data loader to move an entity from one family to another.</p> <p>For example this would allow an entity that is currently assigned to the Centrifugal Pump family to be moved to the Reciprocating Pump family.</p> <p>All relationships will be maintained as long as the family to which the entity is being moved allows the same relationships.</p> <p>Note: Because of the extra processing required, by selecting this option, the interface performance will decrease.</p>

Family Data Loader Option to Break-up or Chunk Data

When loading data using the Family Data Loader, the data is broken-up into batches, based on the Batch Size specified on the Configuration sheet. The batches of the rows of data are then loaded in parallel into GE Digital APM. When loading rows of data in parallel, it is possible that multiple rows of data in the same sheet represent the same record, which will cause the same record to be loaded in different batches. This results in creation of duplicate records, if the record in question did not exist in GE Digital APM at the time that the data load was initiated. So, if the Primary, Predecessor or Successor Action is Insert/Update this scenario could play out. To avoid duplicate records from being created, the Data Loader Framework groups together similar rows of data into the same batch. When working with records the number of rows is relatively small, but when considering links, the number of rows can grow considerably.

When this occurs, it is possible that the number of records in a given batch may exceed the maximum batch size. As a means to avoid the above scenario where the maximum batch size is exceeded or if the number of records in a given batch result in timeout issues, the user may create multiple data loader

templates with fewer rows per sheet, or they may restructure the data being loaded so that all of the predecessor and successor records are first loaded so that when linking records the predecessor and successor records just need to be located when creating the link between those two records. There is also another option available on the Configuration sheet of the Family Data Loader to break-up or chunk the data in corresponding sheet. Instead of creating multiple data loader templates, the Data Loader Framework will break-up or chunk the rows of data in the corresponding sheet so that the rows in the first chunk are processed and then the rows in the second chunk and so on. In the Data Loader Framework, to chunk the data in the given sheet, you can add a column with following Caption and Name in the Configuration sheet:

- Caption: Number of rows to be chunked together
- Name: OPTION_NUMBER_ROWS_TO_CHUNK

In the corresponding row for that column, specify the number of rows to be chunked together. Specifying a positive integer value ≥ 1000 will cause the Data Loader Framework to chunk the rows of data into the number of rows specified, if the value is ≤ 0 this indicates that data chunking is not to occur when loading data for that sheet. Once that chunk of data has been loaded, the next chunk of data will be loaded, and so forth until all the rows of data for that sheet have been loaded. Then processing will continue with the rows of data in the next sheet.

<Data> Worksheet

There is no preexisting format that must be adhered to on the <data> worksheet, because the Data Loader operates on a flexible framework. Field captions and ID are determined based on the data that you want to load.

Use the metadata exported from GE Digital APM to construct the <data> worksheet, to populate the rows with the actual data that will be loaded.

Important: If a field is calculated in GE Digital APM, it cannot be populated through the data loader. If you attempt to load these fields, a warning will appear in the log.

Steps: Export Metadata

Get a copy of the metadata definitions for the family or families that you will be working with to load data.

1. Login to GE Digital APM.
2. In the **Applications** menu, navigate to **ADMIN > Configuration Manager > Export**.
3. At the top of the page, in the **File Name** box, enter a file name and in the **File Type** box, select **Excel (.xlsx)**.
4. In the **Select metadata type** box, select **Families, Fields and Field Behaviors**.
5. Select the family or families that you want to export and move them to the **Selected Items** list.

Tip: Be sure to order the families in the order in which you want the fields to appear in the export.

6. Select **Start Export**.

The metadata is exported, and can be used to populate the <data> worksheet.

7. Save the metadata.

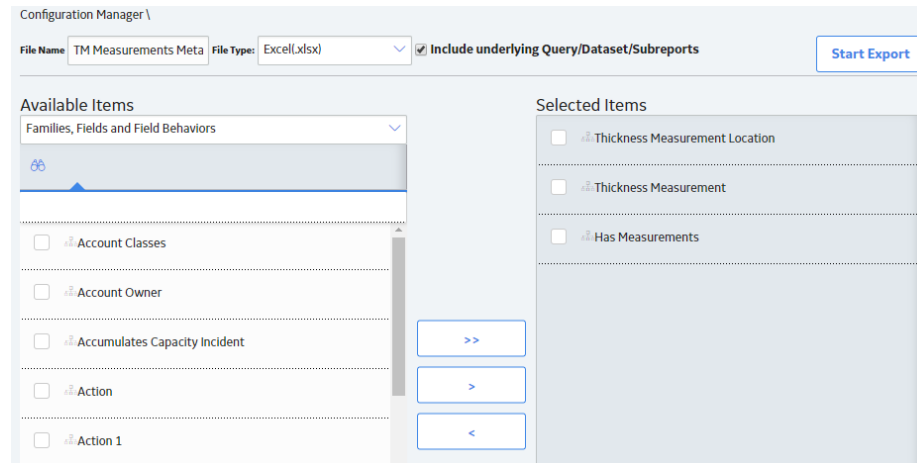
Export Metadata to Load Thickness Measurements

If you want to load Thickness Measurements into GE Digital APM, because Thickness Measurements needs to be related to a Thickness Measurement Location, you must also export that family along with the Has Measurements relationship family.

1. Log in to GE Digital APM.
2. In the **Applications** menu, navigate to **ADMIN > Configuration Manager > Export**.

3. At the top of the page, in the **File Name** box, enter a file name (for example, TM Measurements Metadata).
4. In the **File Type** box, select **Excel (.xlsx)**.
5. In the **Select metadata type** box, select **Families, Fields, Fields Behaviors**, and then select the following families:
 - **Thickness Measurement Location**
 - **Thickness Measurement**
 - **Has Measurements.**

Tip: Export the families in this order. This is how the fields appear in the export file.



6. Select **Start Export**.
The metadata is exported, and can be used to populate the **<data>** worksheet.
7. Save the metadata.
This exported metadata, is used to build source file template.

Configure the Data Loader Source File to Use Units of Measure

Sometimes the data that is being loaded, is in a different unit of measure than the one associated with the corresponding field in GE Digital APM. When this is the case, the APM Family Data Loader allows for you to specify the unit of measure that is tied to a specific row and column. This is done by copying the column to which the unit of measure is tied, and then adding the suffix |UOM to the end of the Column ID. Then, in the data, specify the unit of measure ID for the data being loaded. This unit of measure ID needs to be a valid unit of measure as defined in GE Digital APM, and a valid conversion needs to be specified for the unit of measure specified and the field's unit of measure. Please note that if a unit of measure is not specified, then it will use the field's unit of measure, as defined in GE Digital APM.

Configure the Data Loader Source File to use Time Zones

Sometimes date and time data that is being loaded was collected in a different time zone than the time zone associated with the current user. When this is the case, the APM Family Data Loader allows you to specify the time zone that is tied to a specific row and column. This is done by copying the column to which the time zone is tied, and then adding the suffix |TZ to the end of the Column ID. Then, in the data, specify the time zone for the data being loaded. A valid list of time zones can be found in the Microsoft .NET documentation. Please note that if a time zone is not specified, then it will use the time zone defined for the current user.

Example APM Family Workbooks

In addition to the APM Family Data Loader workbook, you can access an example workbook `Foundation_APM_Data_Loader-Health Indicators and Readings example.xlsx`. This example workbook illustrates how you can use the APM Family Data Loader to load records into a defined GE Digital APM family and link records in one family to another. You can use the information in this example as a model to configure or define templates for loading data into any baseline or custom family.

The data loader in this example creates Health Indicator records in GE Digital APM, links the Health Indicator records to Equipment records, and then links the Health Indicator records to Health Indicator Mapping records. Finally, the data loader loads Readings for one of the Health Indicators. In addition, the example spreadsheet includes how you can use a reference worksheet to store list values and other reference information that users can use when populating the data loader template with data.

Populate the Configuration Worksheet

The Configuration Worksheet tells the APM Family Data Loader what types of data are being loaded and how the data is to be loaded.

Populate the HealthIndicators Worksheet

The HealthIndicators worksheet is populated with the actual Health Indicator records you want to load into GE Digital APM.

Populate the HealthIndicatorsEquipment Worksheet

The HealthIndicatorsEquipment worksheet is populated with the key field values for the Equipment records to which the Health Indicators on the HealthIndicators worksheet will be linked once loaded into GE Digital APM.

Populate the HealthIndicatorMappings Worksheet

The HealthIndicatorMappings worksheet is populated with the Health Indicator Mappings to load into GE Digital APM.

Populate the HealthIndicatorReadings Worksheet

The HealthIndicatorReadings worksheet is populated with the actual Health Indicators data you want to load into GE Digital APM.

On this worksheet, Column C illustrates a feature of the APM Family Data Loader where the unit of measure for a given field can be indicated, so that it can be converted to the baseline unit of measure if needed. Assume, for example, that the `MI_TSVALUE_VALUE_N` field was defined in GE Digital APM as being stored in PSIG, but the data in the spreadsheet was represented by BAR(G). As shown in the following image, you can add the UOM column to indicate to that the unit of measure for the source data is BAR(G). When this column is added, the APM Family Data Loader will convert the data from BAR(G) to PSIG (assuming that there is a unit of measure conversion defined for this in GE Digital APM).

Tip: For more information, refer to the units of measure documentation.

1	Name	Value (Numeric)	Value Unit of Measure	Timestamp	Timestamp Timezone
2	MI_HLTH_IND MI_HLTH_IND_ID_C	MI_HI_VALUE MI_TSVALUE_VALUE_N	MI_HI_VALUE MI_TSVALUE_VALUE_N UOM	MI_HI_VALUE MI_TSVALUE_TIMESTAMP_D	MI_HI_VALUE MI_TSVALUE_TIMESTAMP_D TZ
3	EQ03 Cyclone Pressure - (psig)	26.35449028	BAR(G)	2014-08-18 07:00:00	Central Standard Time
4	EQ03 Cyclone Pressure - (psig)	26.77112961	BAR(G)	2014-08-18 08:00:00	Central Standard Time
5	EQ03 Cyclone Pressure - (psig)	27.18776894	BAR(G)	2014-08-18 09:00:00	Central Standard Time
6	EQ03 Cyclone Pressure - (psig)	27.60440926	BAR(G)	2014-08-18 10:00:00	Central Standard Time
7	EQ03 Cyclone Pressure - (psig)	28.02104759	BAR(G)	2014-08-18 11:00:00	Central Standard Time
8	EQ03 Cyclone Pressure - (psig)	28.43768692	BAR(G)	2014-08-18 12:00:00	Central Standard Time
9	EQ03 Cyclone Pressure - (psig)	28.85432626	BAR(G)	2014-08-18 13:00:00	Central Standard Time
10	EQ03 Cyclone Pressure - (psig)	29.27096558	BAR(G)	2014-08-18 14:00:00	Central Standard Time
11	EQ03 Cyclone Pressure - (psig)	29.68760681	BAR(G)	2014-08-18 15:00:00	Central Standard Time
12	EQ03 Cyclone Pressure - (psig)	30.10424614	BAR(G)	2014-08-18 16:00:00	Central Standard Time
13	EQ03 Cyclone Pressure - (psig)	30.52088547	BAR(G)	2014-08-18 17:00:00	Central Standard Time
14	EQ03 Cyclone Pressure - (psig)	30.9375248	BAR(G)	2014-08-18 18:00:00	Central Standard Time
15	EQ03 Cyclone Pressure - (psig)	31.35416412	BAR(G)	2014-08-18 19:00:00	Central Standard Time
16	EQ03 Cyclone Pressure - (psig)	31.77080345	BAR(G)	2014-08-18 20:00:00	Central Standard Time
17	EQ03 Cyclone Pressure - (psig)	32.18744278	BAR(G)	2014-08-18 21:00:00	Central Standard Time
18	EQ03 Cyclone Pressure - (psig)	32.60408401	BAR(G)	2014-08-18 22:00:00	Central Standard Time
19	EQ03 Cyclone Pressure - (psig)	33.02072144	BAR(G)	2014-08-18 23:00:00	Central Standard Time
20	EQ03 Cyclone Pressure - (psig)	33.43736267	BAR(G)	2014-08-19 00:00:00	Central Standard Time
21	EQ03 Cyclone Pressure - (psig)	33.85400009	BAR(G)	2014-08-19 01:00:00	Central Standard Time

Additionally, column E of the HealthIndicatorReadings worksheet illustrates how time zones can be configured. Notice the appendage to the field name as shown in the following image. Adding a column where the Field ID is appended with a |TZ indicates the timezone of the source column data.

Note: If a timezone is not specified, any Date and Time field values are assumed to be in the same timezone as the user who is loading the data.

1	Value (Numeric)	Value Unit of Measure	Timestamp	Timestamp Timezone
2	MI_HI_VALUE MI_TSVALUE_VALUE_N	MI_HI_VALUE MI_TSVALUE_VALUE_N UOM	MI_HI_VALUE MI_TSVALUE_TIMESTAMP_D	MI_HI_VALUE MI_TSVALUE_TIMESTAMP_D TZ
3	26.35449028	BAR(G)	2014-08-18 07:00:00	Central Standard Time
4	26.77112961	BAR(G)	2014-08-18 08:00:00	Central Standard Time
5	27.18776894	BAR(G)	2014-08-18 09:00:00	Central Standard Time
6	27.60440926	BAR(G)	2014-08-18 10:00:00	Central Standard Time
7	28.02104759	BAR(G)	2014-08-18 11:00:00	Central Standard Time
8	28.43768692	BAR(G)	2014-08-18 12:00:00	Central Standard Time
9	28.85432626	BAR(G)	2014-08-18 13:00:00	Central Standard Time
10	29.27096558	BAR(G)	2014-08-18 14:00:00	Central Standard Time
11	29.68760681	BAR(G)	2014-08-18 15:00:00	Central Standard Time
12	30.10424614	BAR(G)	2014-08-18 16:00:00	Central Standard Time
13	30.52088547	BAR(G)	2014-08-18 17:00:00	Central Standard Time
14	30.9375248	BAR(G)	2014-08-18 18:00:00	Central Standard Time
15	31.35416412	BAR(G)	2014-08-18 19:00:00	Central Standard Time
16	31.77080345	BAR(G)	2014-08-18 20:00:00	Central Standard Time
17	32.18744278	BAR(G)	2014-08-18 21:00:00	Central Standard Time
18	32.60408401	BAR(G)	2014-08-18 22:00:00	Central Standard Time
19	33.02072144	BAR(G)	2014-08-18 23:00:00	Central Standard Time
20	33.43736267	BAR(G)	2014-08-19 00:00:00	Central Standard Time
21	33.85400009	BAR(G)	2014-08-19 01:00:00	Central Standard Time

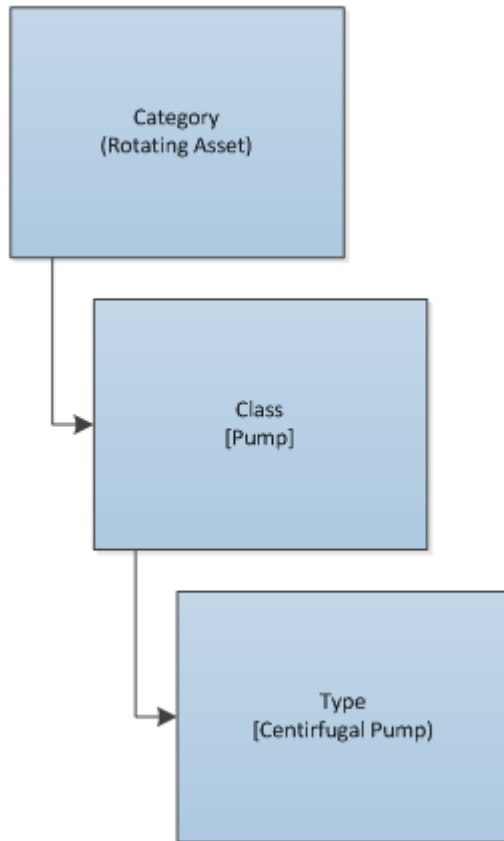
Taxonomy Data Loader

About the Taxonomy Data Loader

The Taxonomy Data Loader loads data from a standard Excel workbook into the Taxonomy data model. The data loader will create or update Taxonomy Categories, Classes, and Types based on the data in the Excel workbook.

About the Taxonomy Data Loader Data Model

The data for a Taxonomy location is loaded from a single Excel workbook containing a single worksheet.



The Taxonomy Data Loader General Loading Strategy

This section describes any prerequisites to loading the data and the order in which the data will be loaded.

Before You Begin

As the taxonomy structure is a foundation for analysis and reporting, users should clearly understand the usage and data model for Taxonomy related records prior to implementing the Taxonomy structure.

About This Task

Note: Before reading this section, refer to the Data Model section.

The Taxonomy data load must be performed in a specific sequence to successfully populate fields, create records, and link them to the predecessor and/or successor records.

Procedure

1. Load Taxonomy Category.
2. Load Taxonomy Class.
3. Load Taxonomy Type.

4. Load Taxonomy Mapping Values.

About the Taxonomy Data Loader Workbook Layout and Use

This section provides a high-level overview and explanation of how the data loader workbook is constructed.

In order to import data using the Taxonomy Data Loader, GE Digital provides an Excel workbook, `Taxonomy.xlsx`, which supports baseline data loading of Taxonomy in GE Digital APM. This workbook must be used to perform the data load. On the Taxonomy worksheets, you will enter the information to load a taxonomy structure that will be assigned to assets within GE Digital APM.

The baseline file is organized such that each row is capable of creating one node in the data model when all columns contain the appropriate values.

The following table lists the worksheets that are included in the Taxonomy Data Loader workbook.

Note: Worksheets in the workbook not being used may be left blank, but should not be deleted from the workbook.

Worksheet	Description
Configuration	The Configuration worksheet is needed to describe the type of data that you will be loading and how that data should be handled during the data load.
TaxonomyCategory	This worksheet is used to link Taxonomy Category data and Taxonomy Class data.
TaxonomyClass	This worksheet is used to link Taxonomy Class data and Taxonomy Type data.
TaxonomyMapping	This worksheet is used to link Taxonomy Type data and Taxonomy Mapping data.

Configuration Worksheet

The **Configuration** worksheet tells the data loader what types of data are being loaded and how the data is to be loaded, and is standard for all data loads regardless of the type of data that you are loading. The following table outlines the options that are valid or the values that are expected in each of the columns on the **Configuration** worksheet.

Field Caption	Field ID	Data Type (Length)	Comments
Load Data From Worksheet	LOAD_DATA_WORKSHEET	Boolean	<p>Identifies if data from the corresponding worksheet identified in the Data Worksheet ID column will be loaded or not.</p> <ul style="list-style-type: none"> • True: The corresponding worksheet will be processed. • False: The corresponding worksheet will not be processed.
Data Worksheet ID	DATA_WORKSHEET_ID	Character	<p>This column contains the name of the <data> worksheet where the actual data is located. It needs to have the same name as the <data> worksheet in the data loader workbook.</p>
Batch Size	BATCH_SIZE	Character	<p>Modifying this field is required to determine the number of records processed in each batch. Enter the batch size you want, and the Data Loader will process that many records per batch.</p> <p>For example, if you want to use a batch size of 100, enter 100, and the data loader will process 100 records per batch.</p> <p>Note: The recommended batch size is 100. If the Batch Size column is removed from the source workbook, the data loader will default to a batch size of 100.</p> <p>In addition to processing the data in batches, the log file reports progress by batch.</p>
Primary Family ID	PRIMARY_FAMILY_ID	Character	<p>Depending on the type of data that you are working with, this will contain the Relationship Family ID or the Entity Family ID. You can also allow the data in source file to determine the Family ID by encapsulating the Field ID that contains the Family ID data in brackets (<>).</p> <p>For example if in the <data> worksheet there is a column with an ID of PRIMARY_FAMILY_ID, where each row contains the corresponding Family ID, then in this column you should put the value of <PRIMARY_FAMILY_ID>.</p> <p>If the Family ID in the Meridium, Inc. metadata contains spaces, then you have to use this feature.</p>

Field Caption	Field ID	Data Type (Length)	Comments
Primary Family Key Fields	PRIMARY_FAMILY_KEY_FIELDS	Character	<p>This column contains the Field IDs associated with the Primary Family that are used to uniquely identify a record. If more than one field is to be used, then each Field ID needs to be separated by a (Pipe) character. In the case where you are loading data into a relationship, if no keys fields exist or are used, use the <none> constant.</p> <p>If the Primary Action is ACTION_INSERTONLY, then no key fields need to be specified, so you can use the <none> constant.</p>
Family Type	FAMILY_TYPE		The value in this column should be Entity or Relationship depending on the type of data that is being loaded.
Predecessor Family ID	PRED_FAMILY_ID	Character	When the Family Type is Relationship, this column will contain the value of the Entity Family ID that is the predecessor in the relationship. Otherwise, it should contain the <none> constant. You can also use the data in each of the rows to determine the Predecessor Family ID.
Predecessor Family Key Fields	PRED_FAMILY_KEY_FIELDS	Character	<p>This column contains the Field ID or IDs associated with the Predecessor Family that are used to uniquely identify the predecessor record. If more than one field is to be used, then each Field ID needs to be separated by a (Pipe) character.</p> <p>If the Predecessor Action is ACTION_INSERTONLY, then no key fields need to be specified, so you can use the <none> constant.</p>
Successor Family ID	SUCC_FAMILY_ID	Character	When the Family Type is Relationship, this column will contain the value of the Entity Family ID that is the successor in the relationship. Otherwise, it should contain the <none> constant. You can also use the data in each of the rows to determine the Successor Family ID.

Field Caption	Field ID	Data Type (Length)	Comments
Successor Family Key Fields	SUCC_FAMILY_KEY_FIELDS	Character	<p>This column contains the Field ID or IDs associated with the Successor Family that are used to uniquely identify the successor record. If more than one field is to be used, then each Field ID needs to be separated by a (Pipe) character.</p> <p>If the Successor Action is ACTION_INSERTONLY, then no key fields need to be specified, so you can use the <none> constant.</p>
Primary Action	PRIMARY_ACTION	Character	<p>The value in this column will determine the action that will be applied to the Primary Family records. If the Family Type is Entity, then the possible values are:</p> <ul style="list-style-type: none"> • ACTION_INSERTONLY • ACTION_INSERTUPDATE • ACTION_UPDATEONLY • ACTION_DELETE • ACTION_PURGE <p>Deleting a record and purging a record will both delete the current record, the difference being that the purge action will delete the record and all of the links or relationships tied to that record. The delete action will simple attempt to delete the record, and if it is related to another record, the delete will fail. If The Family Type is <i>Relationship</i>, then the possible values are:</p> <ul style="list-style-type: none"> • ACTION_INSERTONLY • ACTION_INSERTUPDATE • ACTION_UPDATEONLY • ACTION_DELETE
Predecessor Action	PRED_ACTION	Character	<p>The value in this column will determine the action that will be applied to the Predecessor Family records. The possible values are:</p> <ul style="list-style-type: none"> • ACTION_INSERTONLY • ACTION_INSERTUPDATE • ACTION_UPDATEONLY • ACTION_DELETE • ACTION_PURGE • ACTION_LOCATE <p>If The Family Type is Entity then the value needs to be ACTION_NONE</p> <p>.</p>

Field Caption	Field ID	Data Type (Length)	Comments
Successor Action	SUCC_ACTION	Character	<p>The value in this column will determine the action that will be applied to the Successor Family records. The possible values are:</p> <ul style="list-style-type: none"> • ACTION_INSERTONLY • ACTION_INSERTUPDATE • ACTION_UPDATEONLY • ACTION_DELETE • ACTION_PURGE • ACTION_LOCATE <p>If The Family Type is <i>Entity</i> then the value needs to be ACTION_NONE.</p>
Insert with Null Values?	OPTION_INSERT_ON_NULL	Boolean	When setting field values on a new record, if a value coming across is NULL, the field values will be set to NULL if this option is set to True.
Update with Null Values?	OPTION_UPDATE_ON_NULL	Boolean	When setting field values on an existing record, if a value coming across is NULL, the field values will be set to NULL if this option is set to True.

Field Caption	Field ID	Data Type (Length)	Comments
Replace an Existing Link?	OPTION_REPLACE_EXISTING_LINK	Boolean	<p>The Replace Existing Relationship option is used to determine how a relationship is to be maintained by its cardinality definition.</p> <p>For example, the relationship Location Contains Asset that is defined in the Configuration Manager. It has a cardinality defined as Zero or One to Zero or One, has a Location LP-2300, and contains the Asset P-2300. If, in the data load, you assign the Asset P-5000 to be contained in the Location LP-2300, and you have set the Replace Existing Link property to True, then the data loader will link P-5000 to LP-2300 and unlink P-2300 from LP-2300. This assumes that P-5000 is not currently linked to another location. The same is true for a relationship that is defined as Zero or One to Zero or Many, or Zero or Many to Zero or One.</p>
Allow Change of Family?	OPTION_ALLOW_CHANGE_OF_FAMILY	Boolean	<p>Allows the data loader to move an entity from one family to another.</p> <p>For example this would allow an entity that is currently assigned to the Centrifugal Pump family to be moved to the Reciprocating Pump family.</p> <p>All relationships will be maintained as long as the family to which the entity is being moved allows the same relationships.</p> <p>Note: Because of the extra processing required, by selecting this option, the interface performance will decrease.</p>

TaxonomyCategory

Note: Each row in this worksheet represents a single asset. You should not include the same asset more than once.

Field Caption	Field ID	Data Type (Length)	Comments
Taxonomy Category	SC_TAXOCATG_TAX_CATEG_C	Character (50)	This column is used for batching.
Taxonomy Category Description	SC_TAXOCATG_TAX_CATEG_DESC_C	Character (255)	None

TaxonomyClass

Note: Each row in this worksheet represents a single asset. You should not include the same asset more than once.

Field Caption	Field ID	Data Type (Length)	Comments
Taxonomy Category	SC_TAXOCATG_TAX_CATEG_C	Character (50)	This column is used for batching.
Taxonomy Class	SC_TAXOCLAS_TAX_CLASS_C	Character (50)	This is a key field.
Taxonomy Class Description	'SC_TAXOCLAS_TAX_CLASS_DE SC_C	Character (255)	None

TaxonomyType

Field Caption	Field ID	Data Type (Length)	Comments
Taxonomy Category	SC_TAXOCATG_TAX_CATEG_C	Character (50)	This column is used for batching.
Taxonomy Class	SC_TAXOCLAS_TAX_CLASS_C	Character (50)	This is a key field.
Taxonomy Type	SC_TAXOTYPE_TAX_TYPE_C	Character (50)	This is a key field.
Taxonomy Type Description	SC_TAXOTYPE_TAX_TYPE_DESC_C	Character (255)	None

TaxonomyMapping Worksheet

Field Caption	Field ID	Data Type (Length)	Comments
Taxonomy Mapping Category	SC_TAXOMAPP_TAX_CATEG_C	Character (50)	This column is used for batching.
Taxonomy Mapping Class	SC_TAXOMAPP_TAX_CLASS_C	Character (50)	This is a key field.
Taxonomy Mapping Type	SC_TAXOMAPP_TAX_TYPE_C	Character (50)	This is a key field.
Taxonomy Mapping Value	SC_TAXOMAPP_TAX_MAPPI_VA LUE_C	Character (255)	This is a key field.

Note: In the baseline logic of GE Digital APM, the value in the SC_TAXOMAPP_TAX_MAPPI_VALUE_C field on the Taxonomy Mapping family is mapped to the MI_EQUIP000_OBJ_TYP_C field on the Equipment family, and to the MI_FNCLOC00_OBJ_TYP_C field on the Functional Location family. When you change an existing Taxonomy Mapping Value on the Taxonomy Mapping family, the Object Type values on the Equipment and Functional Location records must be synchronized. This is done by executing the Asset Taxonomy Mapping Update policy. This policy can be executed manually; however, it is recommended that you define an execution schedule for this policy, so that this synchronization occurs automatically.

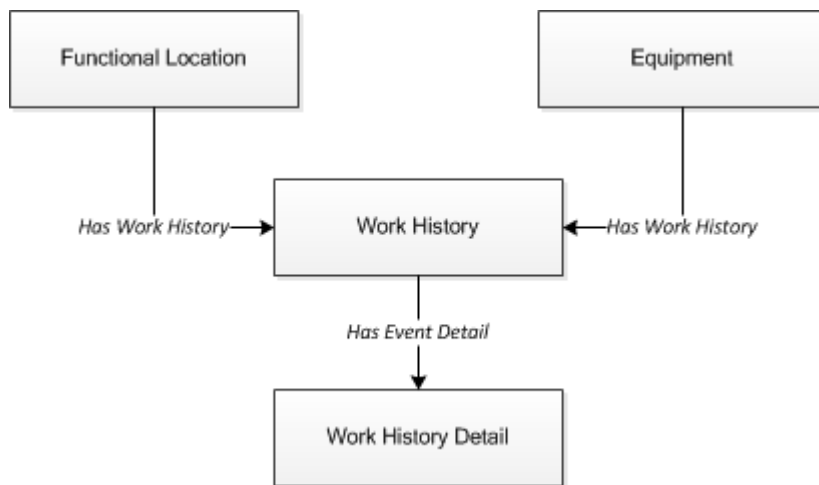
Work History Data Loader

About the Work History Data Loader

The Work History Data Loader allows a user to load historical work order data from an Excel workbook. The loader will create the necessary work history and work history detail records and link them to the corresponding equipment or functional location records as defined in the Excel workbook.

About the Work History Data Loader Data Model

The data for Work History and Work History detail families is loaded from a single Excel workbook containing a single worksheet. This includes Work History and Work History Detail.



Relationships:

- The Work History records are linked to Equipment and/or Functional Location records via the relationship Has Work History [MIR_HSWKHST].
- The Work History Detail records will be related to the appropriate Work History records via the relationship family Has Event Detail [MIR_EVNTDET].

The Work History Data Loader General Loading Strategy

This section describes any prerequisites to loading the data and the order in which the data will be loaded.

About This Task

Note: Before reading this section, refer to the Data Model section.

The Work History and Work History Detail data load must be performed in a specific sequence to successfully populate fields, create records, and link them to the predecessor and/or successor records.

Procedure

1. Create or Update the Work History record.
2. Link the Work History record to the Asset ID (Equipment or Functional Location).
3. Create or Update the Work History Detail record.
4. Link the Work History Detail record to the associated Work History record.

Note: There can be multiple Work History Detail records for each Work History record.

Work History Data Loader Load Verification

Use this query in any GE Digital APM database to populate an Excel format with the required data fields.

Work History Data Query

```
SELECT 'Customer Event Id' "Customer Event Id",
[MI_EVWKHIST].[MI_EVENT_ID]
"Event ID", [MI_EQUIP000].[MI_EQUIP000_EQUIP_ID_C]
"Equipment ID",
[MI_EQUIP000].[MI_EQUIP000_EQUIP_TECH_NBR_C] "Equipment
Technical Number",
[MI_FNCLOC00].[MI_FNCLOC00_FNC_LOC_C] "Functional
Location",
[MI_EVWKHIST].[MI_EVWKHIST_SAP_SYSTEM_C] "CMMS System",
[MI_EVWKHIST].[MI_EVWKHIST_ACTIV_CAUSE_C] "Activity
Cause",
[MI_EVWKHIST].[MI_EVWKHIST_ORDR_PM_ACT_DESC_C] "Activity
Type Description",
[MI_EVWKHIST].[MI_EVWKHIST_ORDR_PM_ACT_C] "Activity Type",
[MI_EVWKHIST].[MI_EVWKHIST_BRKDN_IND_F] "Breakdown
Indicator",
[MI_EVWKHIST].[MI_EVWKHIST_DETCT_MTHD_CD_C] "Detection
Method Code",
[MI_EVWKHIST].[MI_EVWKHIST_DETCT_MTHD_DESC_C] "Detection
Method Description",
[MI_EVWKHIST].[MI_EVWKHIST_EFFCT_CD_C] "Effect Code",
[MI_EVWKHIST].[MI_EVWKHIST_EFFCT_DESC_C] "Effect
Description",
[MI_EVWKHIST].[MI_EVWKHIST_EVENT_DATE_DESC_C] "Event Date
Description",
[MI_EVWKHIST].[MI_EVENT_LNG_DSC_TX] "Event Long
Description",
[MI_EVWKHIST].[MI_EVENT_SHRT_DSC_CHR] "Event Short
Description",
[MI_EVWKHIST].[MI_EVENT_STRT_DT] "Event Start Date",
[MI_EVWKHIST].[MI_EVWKHIST_STATUS_C] "Event Status",
[MI_EVWKHIST].[MI_EVENT_TYP_CHR] "Event Type",
[MI_EVWKHIST].[MI_EVWKHIST_FAILR_MODE_CD_C] "Failure Mode
Code",
[MI_EVWKHIST].[MI_EVWKHIST_FAILR_MODE_DESC_C] "Failure
Mode Description",
[MI_EVWKHIST].[MI_EVWKHIST_FAILURE_REM_T] "Failure
Remarks",
[MI_EVWKHIST].[MI_EVWKHIST_FNCTNL_LOSS_CD_C] "Functional
Loss Code",
[MI_EVWKHIST].[MI_EVWKHIST_FNCTNL_LOSS_DESC_C] "Functional
Loss Description",
[MI_EVWKHIST].[MI_EVWKHIST_MAINT_COMPL_D] "Maintenance
Completion Date",
[MI_EVWKHIST].[MI_EVWKHIST_MAINT_CST_UOM_C] "Maintenance
Cost UOM",
[MI_EVWKHIST].[MI_EVWKHIST_MAINT_CST_N] "Maintenance
Cost",
[MI_EVWKHIST].[MI_EVWKHIST_MAINT_START_D] "Maintenance
Start Date",
[MI_EVWKHIST].[MI_EVWKHIST_MECH_DWN_TIME_N] "Mechanical
```

Down Time",
 [MI_EVWKHIST].[MI_EVWKHIST_MECH_AVAIL_D] "Mechanically
 Available Date",
 [MI_EVWKHIST].[MI_EVWKHIST_MECH_UNAVL_D] "Mechanically
 Unavailable Da",
 [MI_EVWKHIST].[MI_EVWKHIST_ORDR_CRT_DT_D] "Order Creation
 Date",
 [MI_EVWKHIST].[MI_EVWKHIST_ORDR_DESC_C] "Order
 Description",
 [MI_EVWKHIST].[MI_EVWKHIST_ORDR_ID_C] "Order ID",
 [MI_EVWKHIST].[MI_EVWKHIST_ORDR_MAINT_PLAN_C] "Order
 Maintenance Plan",
 [MI_EVWKHIST].[MI_EVWKHIST_ORDR_PRTY_DESC_C] "Order
 Priority Description",
 [MI_EVWKHIST].[MI_EVWKHIST_ORDR_PRTY_C] "Order Priority",
 [MI_EVWKHIST].[MI_EVWKHIST_ORDR_REF_DT_D] "Order Reference
 Date",
 [MI_EVWKHIST].[MI_EVWKHIST_ORDR_SYS_CND_DESC_C] "Order
 System Condition Desc",
 [MI_EVWKHIST].[MI_EVWKHIST_ORDR_SYS_COND_C] "Order System
 Condition",
 [MI_EVWKHIST].[MI_EVWKHIST_ORDR_SYS_STAT_C] "Order System
 Status",
 [MI_EVWKHIST].[MI_EVWKHIST_ORDR_TYP_CD_C] "Order Type
 Code",
 [MI_EVWKHIST].[MI_EVWKHIST_ORDR_TYP_DESC_C] "Order Type
 Description",
 [MI_EVWKHIST].[MI_EVWKHIST_ORDR_USER_STAT_C] "Order User
 Status",
 [MI_EVWKHIST].[MI_EVWKHIST_PM_NBR_C] "PM Number",
 [MI_EVWKHIST].[MI_EVWKHIST_PRDN_CST_N] "Production Cost",
 [MI_EVWKHIST].[MI_EVWKHIST_RQST_ID_C] "Request ID",
 [MI_EVWKHIST].[MI_EVWKHIST_RQST_CRT_DT_D] "Request
 Creation Date",
 [MI_EVWKHIST].[MI_EVWKHIST_RQST_DESC_C] "Request
 Description",
 [MI_EVWKHIST].[MI_EVWKHIST_RQST_PRTY_DESC_C] "Request
 Priority Descriptio",
 [MI_EVWKHIST].[MI_EVWKHIST_RQST_PRTY_C] "Request
 Priority",
 [MI_EVWKHIST].[MI_EVWKHIST_RQST_SYS_STAT_C] "Request
 System Status",
 [MI_EVWKHIST].[MI_EVWKHIST_RQST_TYP_CD_C] "Request Type
 Code",
 [MI_EVWKHIST].[MI_EVWKHIST_RQST_TYP_DESC_C] "Request Type
 Description",
 [MI_EVWKHIST].[MI_EVWKHIST_RQST_USER_STAT_C] "Request User
 Status",
 [MI_EVWKHIST].[MI_EVWKHIST_SCHED_COMPL_D] "Scheduled
 Completion Date",
 [MI_EVWKHIST].[MI_EVWKHIST_SCHED_START_D] "Scheduled Start
 Date",
 [MI_EVWKHIST].[MI_EVWKHIST_TARGET_COMPL_D] "Target
 Completion Date",
 [MI_EVWKHIST].[MI_EVWKHIST_TARGET_START_D] "Target Start
 Date",
 [MI_EVWKHIST].[MI_EVWKHIST_TIME_TO_REPR_N] "Time To Repair
 (TTR)",
 [MI_EVWKHIST].[MI_EVWKHIST_TOTL_CST_N] "Total Cost",
 [MI_EVWKHIST].[MI_EVWKHIST_WORK_HIST_TYPE_C] "Work History
 Type",


```

Priority", [MI_EVWKHIST].[MI_EVWKHIST_WO_PRIORITY_N] "Work Order
Priority",
'WHD_Customer WHD ID' "WHD_Customer WHD ID", [MI_DTWKHIST].
[MI_DTWKHIST_EVNT_DTL_ID_C]
"WHD_Work_History_Detail ID", [MI_DTWKHIST].
[MI_DTWKHIST_EVNT_DTL_DESC_C]
"WHD_Work_Hist_Detail Desc", [MI_DTWKHIST].
[MI_DTWKHIST_ORDR_ID_C]
"WHD_Order ID", [MI_DTWKHIST].[MI_DTWKHIST_RQST_ID_C]
"WHD_Request ID",
[MI_DTWKHIST].[MI_DTWKHIST_CAUSE_CD_C] "WHD_Cause Code",
[MI_DTWKHIST].[MI_DTWKHIST_CAUSE_DESC_C] "WHD_Cause
Description",
[MI_DTWKHIST].[MI_DTWKHIST_CNDDTN_CD_C] "WHD_Condition
Code",
[MI_DTWKHIST].[MI_DTWKHIST_CNDDTN_DESC_C] "WHD_Condition
Description",
[MI_DTWKHIST].[MI_DTWKHIST_DTL_NARTV_T] "WHD_Detail
Narrative",
[MI_DTWKHIST].[MI_DTWKHIST_MAINT_ITEM_CD_C]
"WHD_Maintainable Item Code",
[MI_DTWKHIST].[MI_DTWKHIST_MAINT_ITEM_DESC_C]
"WHD_Maintainable Item Desc",
[MI_DTWKHIST].[MI_DTWKHIST_MAINT_ACTN_CD_C]
"WHD_Maintenance Action Code",
[MI_DTWKHIST].[MI_DTWKHIST_MAINT_ACTN_DESC_C]
"WHD_Maintenance Action Desc"
FROM [MI_EVWKHIST] JOIN_PRED [MI_EQUIP000] JOIN_PRED
[MI_FNCLOC00]
ON {MIR_FLHSEQ} ON {MIR_HSWKHST} JOIN_SUCC [MI_DTWKHIST]
ON {MIR_EVNTDET}

```

About the Work History Data Loader Workbook Layout and Use

This section provides a high-level overview and explanation of how the data loader workbook is constructed.

To import data using the Work History Data Loader, GE Digital APM provides an Excel workbook, *Work History.xlsx*, which supports baseline data loading of work history and work history detail records in GE Digital APM. This workbook must be used to perform the data load.

Note: Worksheets in the workbook not being used may be left blank, but should not be deleted from the workbook.

The following table lists the worksheets that are included in the Foundation Work History Data Loader workbook.

Worksheet	Description
Configuration	The Configuration worksheet is needed to describe the type of data that you will be loading and how that data should be handled during the data load.
WorkHistory	This worksheet is used to specify data for import to the Work History family.

Worksheet	Description
WorkHistoryToWHDetails	This worksheet is used to specify data for import to the Work History Detail family.
WorkHistoryToEquipment	This worksheet is used to link Work History to Equipment records.
WorkHistoryToFLOCs	This worksheet is used to link Work History to Functional Location records.

Configuration Worksheet

The **Configuration** worksheet tells the Data Loader what types of data are being loaded and how the data is to be loaded, and is standard for all data loads regardless of the type of data that you are loading. The following table outlines the options that are valid or the values that are expected in each of the columns on the **Configuration** worksheet

Field Caption	Field ID	Data Type (Length)	Comments
Number of Rows to Chunk	OPTION_NUMBER_ROWS_TO_CHUNK	Character	Option to break-up or chunk data.
Load Data From Worksheet	LOAD_DATA_WORKSHEET	Boolean	Identifies if data from the corresponding worksheet identified in the Data Worksheet ID column will be loaded or not. <ul style="list-style-type: none"> • True: The corresponding worksheet will be processed. • False: The corresponding worksheet will not be processed.
Data Worksheet ID	DATA_WORKSHEET_ID	Character	This column contains the name of the <data> worksheet where the actual data is located. It needs to have the same name as the <data> worksheet in the data loader workbook.

Field Caption	Field ID	Data Type (Length)	Comments
Batch Size	BATCH_SIZE	Character	<p>Modifying this field is required to determine the number of records processed in each batch. Enter the batch size you want, and the Data Loader will process that many records per batch.</p> <p>For example, if you want to use a batch size of 100, enter 100, and the data loader will process 100 records per batch.</p> <p>Note: The recommended batch size is 100. If the Batch Size column is removed from the source workbook, the data loader will default to a batch size of 100.</p> <p>In addition to processing the data in batches, the log file reports progress by batch.</p>
Primary Family ID	PRIMARY_FAMILY_ID	Character	<p>Depending on the type of data that you are working with, this will contain the Relationship Family ID or the Entity Family ID. You can also allow the data in source file to determine the Family ID by encapsulating the Field ID that contains the Family ID data in brackets (<>).</p> <p>For example if in the <data> worksheet there is a column with an ID of PRIMARY_FAMILY_ID, where each row contains the corresponding Family ID, then in this column you should put the value of <PRIMARY_FAMILY_ID>.</p> <p>If the Family ID in the Meridium, Inc. metadata contains spaces, then you have to use this feature.</p>
Primary Family Key Fields	PRIMARY_FAMILY_KEY_FIELDS	Character	<p>This column contains the Field IDs associated with the Primary Family that are used to uniquely identify a record. If more than one field is to be used, then each Field ID needs to be separated by a (Pipe) character. In the case where you are loading data into a relationship, if no keys fields exist or are used, use the <none> constant.</p> <p>If the Primary Action is ACTION_INSERTONLY, then no key fields need to be specified, so you can use the <none> constant.</p>

Field Caption	Field ID	Data Type (Length)	Comments
Family Type	FAMILY_TYPE	Character	The value in this column should be Entity or Relationship depending on the type of data that is being loaded.
Predecessor Family ID	PRED_FAMILY_ID	Character	When the Family Type is Relationship, this column will contain the value of the Entity Family ID that is the predecessor in the relationship. Otherwise, it should contain the <none> constant. You can also use the data in each of the rows to determine the Predecessor Family ID.
Predecessor Family Key Fields	PRED_FAMILY_KEY_FIELDS	Character	This column contains the Field ID or IDs associated with the Predecessor Family that are used to uniquely identify the predecessor record. If more than one field is to be used, then each Field ID needs to be separated by a (Pipe) character. If the Predecessor Action is ACTION_INSERTONLY, then no key fields need to be specified, so you can use the <none> constant.
Successor Family ID	SUCC_FAMILY_ID	Character	When the Family Type is Relationship, this column will contain the value of the Entity Family ID that is the successor in the relationship. Otherwise, it should contain the <none> constant. You can also use the data in each of the rows to determine the Successor Family ID.
Successor Family Key Fields	SUCC_FAMILY_KEY_FIELDS	Character	This column contains the Field ID or IDs associated with the Successor Family that are used to uniquely identify the successor record. If more than one field is to be used, then each Field ID needs to be separated by a (Pipe) character. If the Successor Action is ACTION_INSERTONLY, then no key fields need to be specified, so you can use the <none> constant.

Field Caption	Field ID	Data Type (Length)	Comments
Primary Action	PRIMARY_ACTION	Character	<p>The value in this column will determine the action that will be applied to the Primary Family records. If the Family Type is Entity, then the possible values are:</p> <ul style="list-style-type: none"> • ACTION_INSERTONLY • ACTION_INSERTUPDATE • ACTION_UPDATEONLY • ACTION_DELETE • ACTION_PURGE <p>Deleting a record and purging a record will both delete the current record, the difference being that the purge action will delete the record and all of the links or relationships tied to that record. The delete action will simple attempt to delete the record, and if it is related to another record, the delete will fail. If The Family Type is Relationship, then the possible values are:</p> <ul style="list-style-type: none"> • ACTION_INSERTONLY • ACTION_INSERTUPDATE • ACTION_UPDATEONLY • ACTION_DELETE
Predecessor Action	PRED_ACTION	Character	<p>The value in this column will determine the action that will be applied to the Predecessor Family records. The possible values are:</p> <ul style="list-style-type: none"> • ACTION_INSERTONLY • ACTION_INSERTUPDATE • ACTION_UPDATEONLY • ACTION_DELETE • ACTION_PURGE • ACTION_LOCATE <p>If The Family Type is Entity then the values needs to be</p> <ul style="list-style-type: none"> • ACTION_NONE

Field Caption	Field ID	Data Type (Length)	Comments
Successor Action	SUCC_ACTION	Character	<p>The value in this column will determine the action that will be applied to the Successor Family records. The possible values are:</p> <ul style="list-style-type: none"> • ACTION_INSERTONLY • ACTION_INSERTUPDATE • ACTION_UPDATEONLY • ACTION_DELETE • ACTION_PURGE • ACTION_LOCATE <p>If The Family Type is Entity then the values needs to be</p> <ul style="list-style-type: none"> • ACTION_NONE
Insert with Null Values?	OPTION_INSERT_ON_NULL	Boolean	When setting field values on a new record, if a value coming across is NULL, the field values will be set to NULL if this option is set to True.
Update with Null Values?	OPTION_UPDATE_ON_NULL	Boolean	When setting field values on an existing record, if a value coming across is NULL, the field values will be set to NULL if this option is set to True.

Field Caption	Field ID	Data Type (Length)	Comments
Replace an Existing Link?	OPTION_REPLACE_EXISTING_LINK	Boolean	<p>The Replace Existing Relationship option is used to determine how a relationship is to be maintained by its cardinality definition.</p> <p>For example, the relationship Location Contains Asset that is defined in the Configuration Manager. It has a cardinality defined as Zero or One to Zero or One, has a Location LP-2300, and contains the Asset P-2300. If, in the data load, you assign the Asset P-5000 to be contained in the Location LP-2300, and you have set the Replace Existing Link property to True, then the data loader will link P-5000 to LP-2300 and unlink P-2300 from LP-2300. This assumes that P-5000 is not currently linked to another location. The same is true for a relationship that is defined as Zero or One to Zero or Many, or Zero or Many to Zero or One.</p>
Allow Change of Family?	OPTION_ALLOW_CHANGE_OF_FAMILY	Boolean	<p>Allows the data loader to move an entity from one family to another.</p> <p>For example this would allow an entity that is currently assigned to the Centrifugal Pump family to be moved to the Reciprocating Pump family.</p> <p>All relationships will be maintained as long as the family to which the entity is being moved allows the same relationships.</p> <p>Note: Because of the extra processing required, by selecting this option, the interface performance will decrease.</p>

WorkHistory

Field ID	Filed Caption	Data Type (Length)	Comments
Event ID	MI_EVENT_ID	Character (255)	Generated by the system, and is not loaded.
CMMS System	MI_EVWKHIST_SAP_SYSTEM_C	Character (50)	None
Equipment ID	MI_EVENT_ASST_ID_CHR	Character (255)	Used as unique key to find equipment.
Asset Tech ID	MI_EVWKHIST_ASST_TECH_ID_C	Character (255)	None

Field ID	Filed Caption	Data Type (Length)	Comments
Location ID	MI_EVENT_LOC_ID_CHR	Character (255)	Is a key field, and is used to find Functional Location.
Activity Cause	MI_EVWKHIST_ACTIV_CAUSE_C	Character (255)	None
Activity Cause Description	MI_EVWKHIST_ACTIV_CAUSE_DESC_C	Character (255)	None
Activity Type	MI_EVWKHIST_ORDR_PM_ACT_C	Character (50)	None
Activity Type Description	MI_EVWKHIST_ORDR_PM_ACT_DESC_C	Character (255)	None
Breakdown Indicator	MI_EVWKHIST_BRKDN_IND_F	Boolean	None
Detection Method Code	MI_EVWKHIST_DETCT_MTHD_CD_C	Character (50)	None
Detection Method Description	MI_EVWKHIST_DETCT_MTHD_DESC_C	Character (255)	None
Effect Code	MI_EVWKHIST_EFFCT_CD_C	Character (50)	None
Effect Description	MI_EVWKHIST_EFFCT_DESC_C	Character (50)	None
Event Date Description	MI_EVWKHIST_EVENT_DATE_DESC_C	Character (255)	None
Event Long Description	MI_EVENT_LNG_DSC_TX	Text	None
Event Short Description	MI_EVENT_SHRT_DSC_CHR	Character (255)	None
Event Start Date	MI_EVENT_STRT_DT	Date	None
Event Status	MI_EVWKHIST_STATUS_C	Character (50)	None
Event Type	MI_EVENT_TYP_CHR	Character (255)	None
Failure Mode Code	MI_EVWKHIST_FAILR_MODE_CD_C	Character (50)	None
Failure Mode Description	MI_EVWKHIST_FAILR_MODE_DESC_C	Character (255)	None
Failure Remarks	MI_EVWKHIST_FAILURE_REM_T	Text	None
Functional Loss Code	MI_EVWKHIST_FNCTNL_LOSS_CD_C	Character (50)	None
Functional Loss Description	MI_EVWKHIST_FNCTNL_LOSS_DESC_C	Character (50)	None
Maintenance Completion Date	MI_EVWKHIST_MAINT_COMPL_D	Date	None
Maintenance Cost UOM	MI_EVWKHIST_MAINT_CST_UOM_C	Character (10)	None
Maintenance Cost	MI_EVWKHIST_MAINT_CST_N	Numeric	None
Maintenance Start Date	MI_EVWKHIST_MAINT_START_D	Date	None
Mechanical Down Time	MI_EVWKHIST_MECH_DWN_TIME_N	Numeric	Calculated by system.
Mechanically Available Date	MI_EVWKHIST_MECH_AVAIL_D	Date	None

Field ID	Filed Caption	Data Type (Length)	Comments
Mechanically Unavailable Date	MI_EVWKHIST_MECH_UNAVL_D	Date	None
Order Creation Date	MI_EVWKHIST_ORDR_CRT_DT_D	Date	None
Order Description	MI_EVWKHIST_ORDR_DESC_C	Character (255)	None
Order ID	MI_EVWKHIST_ORDR_ID_C	Character (50)	None
Order Maintenance Plan	MI_EVWKHIST_ORDR_MAINT_PLAN_C	Character (50)	None
Order Priority	MI_EVWKHIST_ORDR_PRTY_C	Character (50)	None
Order Priority Description	MI_EVWKHIST_ORDR_PRTY_DESC_C	Character (255)	None
Order Reference Date	MI_EVWKHIST_ORDR_REF_DT_D	Date	None
Order System Condition	MI_EVWKHIST_ORDR_SYS_COND_C	Character (50)	None
Order System Condition Description	MI_EVWKHIST_ORDR_SYS_CND_DESC_C	Character (255)	None
Order System Status	MI_EVWKHIST_ORDR_SYS_STAT_C	Character (255)	None
Order Type Code	MI_EVWKHIST_ORDR_TYP_CD_C	Character (50)	None
Order Type Description	MI_EVWKHIST_ORDR_TYP_DESC_C	Character (50)	None
Order User Status	MI_EVWKHIST_ORDR_USER_STAT_C	Character (255)	None
PM Number	MI_EVWKHIST_PM_NBR_C	Character (255)	None
Production Cost	MI_EVWKHIST_PRDN_CST_N	Numeric	None
Request ID	MI_EVWKHIST_RQST_ID_C	Character (50)	None
Request Creation Date	MI_EVWKHIST_RQST_CRT_DT_D	Date	None
Request Description	MI_EVWKHIST_RQST_DESC_C	Character (255)	None
Request Priority	MI_EVWKHIST_RQST_PRTY_C	Character (50)	None
Request Priority Description	MI_EVWKHIST_RQST_PRTY_DESC_C	Character (255)	None
Request System Status	MI_EVWKHIST_RQST_SYS_STAT_C	Character (255)	None
Request Type Code	MI_EVWKHIST_RQST_TYP_CD_C	Character (50)	None
Request Type Description	MI_EVWKHIST_RQST_TYP_DESC_C	Character (255)	None
Request User Status	MI_EVWKHIST_RQST_USER_STAT_C	Character (255)	None
Scheduled Completion Date	MI_EVWKHIST_SCHED_COMPL_D	Date	None
Scheduled Start Date	MI_EVWKHIST_SCHED_START_D	Date	None
Target Completion Date	MI_EVWKHIST_TARGET_COMPL_D	Date	None
Target Start Date	MI_EVWKHIST_TARGET_START_D	Date	None

Field ID	Filed Caption	Data Type (Length)	Comments
Work History Type	MI_EVWKHIST_WORK_HIST_TYPE_C	Character (50)	None
Work Order Priority	MI_EVWKHIST_WO_PRIORITY_N	Numeric	None
Site Reference Name	MI_SITE_NAME	Character (50)	None

WorkHistoryToWHDetails Worksheet

On the WorkHistoryToWHDetails worksheet, you will find work history and work history detail fields.

Note: Each row in this worksheet represents a unique record. You should not include the same asset more than once.

Field ID	Field Caption	Data Type (Length)	Comments
Event ID	MI_EVWKHIST MI_EVENT_ID	Character (255)	Generated by the system, and is not loaded.
CMMS System	MI_EVWKHIST MI_EVWKHIST_SAP_SYSTEM_C	Character (50)	None
Work Detail History ID	MI_DTWKHIST MI_DTWKHIST_EVNT_DTL_ID_C	Character (50)	None
CMMS System	'MI_DTWKHIST MI_DTWKHIST_SAP_SYSTEM_C	Character (50)	None
Work History ID	MI_DTWKHIST MI_DTWKHIST_WRK_HISTRY_ID_C	Character (50)	None
Work History Detail Description	MI_DTWKHIST MI_DTWKHIST_EVNT_DTL_DESC_C	Character (255)	None
Order ID	MI_DTWKHIST MI_DTWKHIST_ORDR_ID_C	Character (50)	None
Request ID	MI_DTWKHIST MI_DTWKHIST_RQST_ID_C	Character (50)	Request ID from the associated order ID on the WH record, if not work order.
Cause Code	MI_DTWKHIST MI_DTWKHIST_CAUSE_CD_C	Character (50)	None
Cause Description	'MI_DTWKHIST MI_DTWKHIST_CAUSE_DESC_C	Character (255)	None
Condition Code	MI_DTWKHIST MI_DTWKHIST_CNDRN_CD_C	Character (20)	None
Condition Description	MI_DTWKHIST MI_DTWKHIST_CNDRN_DESC_C	Character (255)	None
Detail Narrative	MI_DTWKHIST MI_DTWKHIST_DTL_NARTV_T	Text	None
Maintainable Item Code	MI_DTWKHIST MI_DTWKHIST_MAINT_ITEM_CD_C	Character (50)	None

Field ID	Field Caption	Data Type (Length)	Comments
Maintainable Item Description	MI_DTWKHIST MI_DTWKHIST_MAINT_ITEM_DESC_C	Character (255)	None
Maintenance Action Code	MI_DTWKHIST MI_DTWKHIST_MAINT_ACTN_CD_C	Character (50)	None
Maintenance Action Description	MI_DTWKHIST MI_DTWKHIST_MAINT_ACTN_DESC_C	Character (255)	None
Equipment ID	MI_DTWKHIST MI_DTWKHIST_ASST_ID_C	Character (50)	None
Functional Location ID	MI_DTWKHIST MI_DTWKHIST_LOC_ID_C	Character (50)	None
Site Reference Name	MI_DTWKHIST MI_SITE_NAME	Character (50)	None
Sub Object Number	MI_DTWKHIST MI_DTWKHIST_SUB_OBJECT_NUM_C	Character (50)	None.

WorkHistoryToEquipment Worksheet

Field ID	Filed Caption	Data Type (Length)	Comments
Event ID	MI_EVWKHIST MI_EVENT_ID	Character (255)	None
CMMS System	'MI_EVWKHIST MI_EVWKHIST_SAP_SYSTEM_C	Character (50)	None
Equipment ID	'MI_EQUIP000 MI_EQUIP000_EQUIP_ID_C	Character (50)	None
CMMS System	'MI_EQUIP000 MI_EQUIP000_SAP_SYSTEM_C	Character (50)	None

WorkHistoryToFLOCs Worksheet

Field ID	Filed Caption	Data Type (Length)	Comments
Event ID	MI_EVWKHIST MI_EVENT_ID	Character (255)	None
CMMS System	'MI_EVWKHIST MI_EVWKHIST_SAP_SYSTEM_C	Character (50)	None
Functional Location Internal	'MI_FNCLOC00 MI_FNCLOC00_INTERNAL_ID_C	Character (50)	None
CMMS System	'MI_FNCLOC00 MI_FNCLOC00_SAP_SYSTEM_C	Character (50)	None

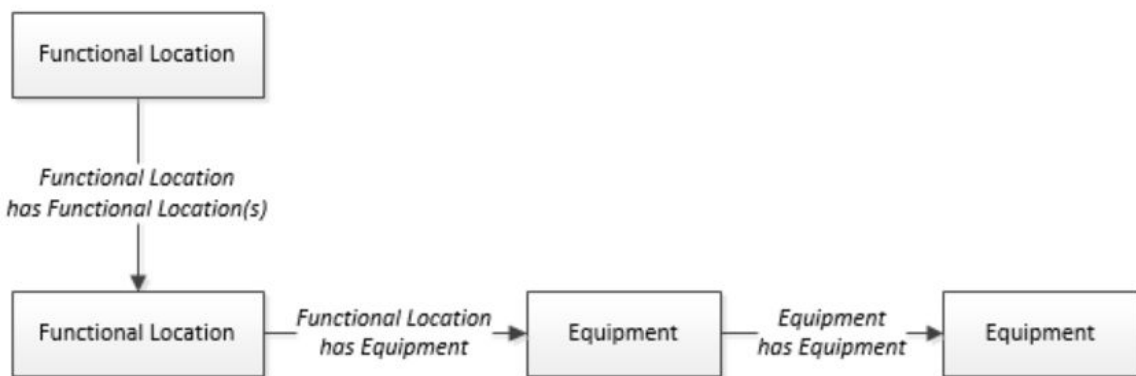
Equipment and Functional Location Data Loader

About the Equipment and Functional Location Data Loader

The Equipment and Functional Location Data Loader allows a user to import data from an Excel workbook. The user is able to build out the asset hierarchy based on structure defined in the Excel workbook.

About the Equipment and Functional Location Data Loaders Data Model

The data for Equipment and Functional Location is loaded from a single Excel workbook containing multiple worksheets. This includes Functional Locations and Equipment.



The Functional Location can be linked to a parent Functional Location using the relationship Functional Location Has Functional Location(s).

The Equipment and Functional Location Data Loader General Loading Strategy

This topic describes any prerequisites to loading the data and the order in which the data will be loaded for Equipment and Functional Location Data Loaders.

Before You Begin

Equipment Taxonomy data must be present prior to loading Equipment and Functional Location data.

About This Task

Note: Before reading this section, refer to the Data Model section.

The Equipment and Functional Location data load must be performed in a specific sequence to successfully populate fields, create records, and link them to the predecessor and/or successor records.

Procedure

1. Create the Functional Location.
2. Create the Equipment.

The Equipment and Functional Location Data Loaders have the listed limitations.

- The Functional Location hierarchy can be constructed in the loader by assigning the parent Functional Location (superseding Functional Location) to the child record.
- CMMS-ID is a required field that is intended to identify the original source of the data and part of the key value.
- After loading Equipment records into GE Digital APM with a specific site reference, you cannot update the Equipment records to have global site references by reimporting the workbook with the site reference column updated to global on the Equipment worksheet. To update Equipment records to have global site references, you must update the predecessor Functional Locations with the site reference value *Global* on the worksheet.

In GE Digital APM, records inherit their site references from their predecessor records. Additionally, when the Equipment and Functional Location Data Loader is run, it loads Equipment records first, and then loads Functional Location records. Therefore, to change the equipment record's site reference to global, you would need to re-import the workbook with the Functional Location record indicating a *Global* site reference.

About the Equipment and Functional Location Data Loaders Workbook Layout and Use

This section provides a high-level overview and explanation of how the data loader workbook is constructed.

In order to import data using the Equipment and Functional Location Data Loaders, GE Digital APM provides an Excel workbook, `Equipment and Functional Location.xlsx`, which supports baseline data loading of equipment and functional locations in GE Digital APM. This workbook must be used to perform the data load.

The master Excel workbook contains one worksheet for each node that will be populated in the data model.

The following table lists the worksheets that are included in the Equipment and Functional Location Data Loaders workbook.

Note: Worksheets in the workbook not being used may be left blank, but should not be deleted from the workbook.

Worksheet	Description
Configuration	The Configuration worksheet is needed to describe the type of data that you will be loading and how that data should be handled during the data load.
Equipment	This worksheet is used to specify data for import to the Equipment family.
EquipmentToSuperiorEquipment	This worksheet is used to link Equipment to Superior Equipment records.
FunctionalLocations	This worksheet is used to specify data for import to the Functional Location family.
FuncLocsToEquipment	This worksheet is used to link existing Functional Location records to existing Equipment records.
FuncLocsToSuperiorFuncLocs	This worksheet is used to link existing Functional Locations to superior Functional Locations.

Configuration Worksheet

The Configuration worksheet tells the Data Loader what types of data are being loaded and how the data is to be loaded, and is standard for all data loads regardless of the type of data that you are loading. The following table outlines the options that are valid or the values that are expected in each of the columns on the Configuration worksheet.

Field Caption	Field ID	Data Type (Length)	Comments
Number of Rows to Chunk	OPTION_NUMBER_ROWS_TO_CHUNK	Character	Option to break-up or chunk data.
Load Data From Worksheet	LOAD_DATA_WORKSHEET	Boolean	Identifies if data from the corresponding worksheet identified in the Data Worksheet ID column will be loaded or not. <ul style="list-style-type: none"> • True: The corresponding worksheet will be processed. • False: The corresponding worksheet will not be processed.
Data Worksheet ID	DATA_WORKSHEET_ID	Character	This column contains the name of the <data> worksheet where the actual data is located. It needs to have the same name as the <data> worksheet in the data loader workbook.
Batch Size	BATCH_SIZE	Character	Modifying this field is required to determine the number of records processed in each batch. Enter the batch size you want, and the Data Loader will process that many records per batch. For example, if you want to use a batch size of 100, enter 100, and the data loader will process 100 records per batch. Note: The recommended batch size is 100. If the Batch Size column is removed from the source workbook, the data loader will default to a batch size of 100. In addition to processing the data in batches, the log file reports progress by batch.

Field Caption	Field ID	Data Type (Length)	Comments
Primary Family ID	PRIMARY_FAMILY_ID	Character	<p>Depending on the type of data that you are working with, this will contain the Relationship Family ID or the Entity Family ID. You can also allow the data in source file to determine the Family ID by encapsulating the Field ID that contains the Family ID data in brackets (<>).</p> <p>For example if in the <data> worksheet there is a column with an ID of PRIMARY_FAMILY_ID, where each row contains the corresponding Family ID, then in this column you should put the value of <PRIMARY_FAMILY_ID>.</p> <p>If the Family ID in the Meridium, Inc. metadata contains spaces, then you have to use this feature.</p>
Primary Family Key Fields	PRIMARY_FAMILY_KEY_FIELDS	Character	<p>This column contains the Field IDs associated with the Primary Family that are used to uniquely identify a record. If more than one field is to be used, then each Field ID needs to be separated by a (Pipe) character. In the case where you are loading data into a relationship, if no keys fields exist or are used, use the <none> constant.</p> <p>If the Primary Action is ACTION_INSERTONLY, then no key fields need to be specified, so you can use the <none> constant.</p>
Family Type	FAMILY_TYPE	Character	<p>The value in this column should be Entity or Relationship depending on the type of data that is being loaded.</p>
Predecessor Family ID	PRED_FAMILY_ID	Character	<p>When the Family Type is Relationship, this column will contain the value of the Entity Family ID that is the predecessor in the relationship. Otherwise, it should contain the <none> constant. You can also use the data in each of the rows to determine the Predecessor Family ID.</p>

Field Caption	Field ID	Data Type (Length)	Comments
Predecessor Family Key Fields	PRED_FAMILY_KEY_FIELDS	Character	<p>This column contains the Field ID or IDs associated with the Predecessor Family that are used to uniquely identify the predecessor record. If more than one field is to be used, then each Field ID needs to be separated by a (Pipe) character.</p> <p>If the Predecessor Action is ACTION_INSERTONLY, then no key fields need to be specified, so you can use the <none> constant.</p>
Successor Family ID	SUCC_FAMILY_ID	Character	<p>When the Family Type is Relationship, this column will contain the value of the Entity Family ID that is the successor in the relationship. Otherwise, it should contain the <none> constant. You can also use the data in each of the rows to determine the Successor Family ID.</p>
Successor Family Key Fields	SUCC_FAMILY_KEY_FIELDS	Character	<p>This column contains the Field ID or IDs associated with the Successor Family that are used to uniquely identify the successor record. If more than one field is to be used, then each Field ID needs to be separated by a (Pipe) character.</p> <p>If the Successor Action is ACTION_INSERTONLY, then no key fields need to be specified, so you can use the <none> constant.</p>

Field Caption	Field ID	Data Type (Length)	Comments
Primary Action	PRIMARY_ACTION	Character	<p>The value in this column will determine the action that will be applied to the Primary Family records. If the Family Type is Entity, then the possible values are:</p> <ul style="list-style-type: none"> • ACTION_INSERTONLY • ACTION_INSERTUPDATE • ACTION_UPDATEONLY • ACTION_DELETE • ACTION_PURGE <p>Deleting a record and purging a record will both delete the current record, the difference being that the purge action will delete the record and all of the links or relationships tied to that record. The delete action will simple attempt to delete the record, and if it is related to another record, the delete will fail. If The Family Type is Relationship, then the possible values are:</p> <ul style="list-style-type: none"> • ACTION_INSERTONLY • ACTION_INSERTUPDATE • ACTION_UPDATEONLY • ACTION_DELETE
Predecessor Action	PRED_ACTION	Character	<p>The value in this column will determine the action that will be applied to the Predecessor Family records. The possible values are:</p> <ul style="list-style-type: none"> • ACTION_INSERTONLY • ACTION_INSERTUPDATE • ACTION_UPDATEONLY • ACTION_DELETE • ACTION_PURGE • ACTION_LOCATE <p>If The Family Type is Entity then the values needs to be</p> <ul style="list-style-type: none"> • ACTION_NONE

Field Caption	Field ID	Data Type (Length)	Comments
Successor Action	SUCC_ACTION	Character	<p>The value in this column will determine the action that will be applied to the Successor Family records. The possible values are:</p> <ul style="list-style-type: none"> • ACTION_INSERTONLY • ACTION_INSERTUPDATE • ACTION_UPDATEONLY • ACTION_DELETE • ACTION_PURGE • ACTION_LOCATE <p>If The Family Type is Entity then the values needs to be</p> <ul style="list-style-type: none"> • ACTION_NONE
Insert with Null Values?	OPTION_INSERT_ON_NULL	Boolean	When setting field values on a new record, if a value coming across is NULL, the field values will be set to NULL if this option is set to True.
Update with Null Values?	OPTION_UPDATE_ON_NULL	Boolean	When setting field values on an existing record, if a value coming across is NULL, the field values will be set to NULL if this option is set to True.

Field Caption	Field ID	Data Type (Length)	Comments
Replace an Existing Link?	OPTION_REPLACE_EXISTING_LINK	Boolean	<p>The Replace Existing Relationship option is used to determine how a relationship is to be maintained by its cardinality definition.</p> <p>For example, the relationship Location Contains Asset that is defined in the Configuration Manager. It has a cardinality defined as Zero or One to Zero or One, has a Location LP-2300, and contains the Asset P-2300. If, in the data load, you assign the Asset P-5000 to be contained in the Location LP-2300, and you have set the Replace Existing Link property to True, then the data loader will link P-5000 to LP-2300 and unlink P-2300 from LP-2300. This assumes that P-5000 is not currently linked to another location. The same is true for a relationship that is defined as Zero or One to Zero or Many, or Zero or Many to Zero or One.</p>
Allow Change of Family?	OPTION_ALLOW_CHANGE_OF_FAMILY	Boolean	<p>Allows the data loader to move an entity from one family to another.</p> <p>For example this would allow an entity that is currently assigned to the Centrifugal Pump family to be moved to the Reciprocating Pump family.</p> <p>All relationships will be maintained as long as the family to which the entity is being moved allows the same relationships.</p> <p>Note: Because of the extra processing required, by selecting this option, the interface performance will decrease.</p>

Equipment Worksheet

On the Equipment worksheet, you will specify Equipment that you want to load into GE Digital APM.

Note: Each row in this worksheet represents a unique asset. You should not include the same asset more than once.

Field Caption	Field Column Name	Data Type (Length)	Comment
Maintenance Plant	MI_EQUIP000_MAINT_PLANT_C	Character (50)	This field is required, and is used to group or batch the equipment records.
Equipment ID	MI_EQUIP000_EQUIP_ID_C	Character (225)	This is a key field.

Field Caption	Field Column Name	Data Type (Length)	Comment
Equipment Technical Number	MI_EQUIP000_EQUIP_TECH_N BR_C	Character (255)	None
CMMS System	MI_EQUIP000_SAP_SYSTEM_C	Character (255)	This is a key field.
Site Reference Name	MI_SITE_NAME	Character (255)	<p>Important: Site Reference records must preexist in GE Digital APM. The data loader does not create Site Reference records, but simply provides foreign key data in the asset records, as determined in the source workbook. If the site reference record does not preexist, then you will receive an error.</p> <p>1. Enter the site name to designate which site the Equipment record, once loaded into GE Digital APM, will be filtered by.</p> <p>-or-</p> <p>1. Enter *Global* to indicate a that the site reference should be left global. Meaning that it will not be filtered by site in GE Digital APM.</p> <p>Note: Only super users are permitted to update Site Reference records.</p>
Equipment Short Description	MI_EQUIP000_EQUIP_SHRT_D ESC_C	Character (255)	None
Equipment Long Description	MI_EQUIP000_EQUIP_LNG_DE SC_T	Text	None
Object Type (Taxonomy Mapping Value)	MI_EQUIP000_OBJ_TYP_C	Character (50)	None
Equipment System Status	MI_EQUIP000_SYS_ST_C	Character (255)	None
Manufacturer	MI_EQUIP000_MFR_C	Character (255)	None
Model Number	MI_EQUIP000_MOD_NO_C	Character (255)	None
Equipment Serial Number	MI_EQUIP000_SN_C	Character (255)	None

Field Caption	Field Column Name	Data Type (Length)	Comment
Active	'MI_EQUIP000_ACTIVE_F	Logical	None
Equipment uniquely identified by SAP System - Equipment ID	MI_EQUIP000_UNIQUE_ID_C	Character (550)	<p>This field uniquely identifies the equipment using the format <CMMS System> - <Functional Location ID>. This value allows the Data Loader to associate records between the Meridium database and the Predix database.</p> <p>Note: You should not use this field if you have an on-premises implementation of GE Digital APM.</p>

FunctionalLocations Worksheet

On the FunctionalLocations worksheet, you enter information for Functional Locations and the Functional Location hierarchy.

Note: Each row in this worksheet represents a unique asset. You should not include the same asset more than once.

Field Caption	Field ID	Data Type (Length)	Comments
Maintenance Plant	MI_FNCLOC00_MAINT_PLNT_C	Character (50)	None
Functional Location Internal ID	MI_FNCLOC00_INTERNAL_ID_C	Character (30)	This is a key field.
Functional Location	MI_FNCLOC00_FNC_LOC_C	Character (50)	None
CMMS System	MI_FNCLOC00_SAP_SYSTEM_C	Character (255)	This is a key field.

Field Caption	Field ID	Data Type (Length)	Comments
Site Reference Name	MI_SITE_NAME	Character (255)	<p>Important: Site Reference records must preexist in GE Digital APM. The data loader does not create Site Reference records, but simply provides foreign key data in the asset records, as determined in the source workbook. If the site reference record does not preexist, then you will receive an error.</p> <p>1. Enter the site name to designate the site by which the Functional Location record, once loaded into GE Digital APM, will be filtered.</p> <p>-or-</p> <p>1. Enter *Global* to indicate a that the site reference should be left global. Meaning that it will not be filtered by site in GE Digital APM.</p> <p>Note: Only Super Users are permitted to update Site Reference records.</p>
Functional Location Description	MI_FNCLOC00_FNC_LOC_DESC_C	Character (255)	None
Functional Location Long Description	MI_FNCLOC00_FNC_LOC_LONG_DESC_C	Text	None
Object Type (Taxonomy Mapping Value)	MI_FNCLOC00_OBJ_TYP_C	Character (50)	None
System Status	MI_FNCLOC00_SYS_STATUS_C	Character (255)	None

Field Caption	Field ID	Data Type (Length)	Comments
Is a Process Unit?	SC_FNCLOC00_IS_A_PROCE_U NIT_L	Logical	None
Functional Location uniquely identified by SAP System - Functional Location Internal ID	MI_FNCLOC00_UNIQUE_ID_C	Character (550)	<p>This field uniquely identifies the functional location using the format <CMMS System> - <Functional Location ID>. This value allows the Data Loader to associate records between the Meridium database and the Predix database.</p> <p>Note: You should not use this field if you have an on-premises implementation of GE Digital APM.</p>

FuncLocsToEquipment

Field Caption	Field ID	Data Type (Length)	Comments
Maintenance Plant	MI_FNCLOC00_MAINT_PLNT_C	Character (50)	None
Functional Location Internal ID	MI_FNCLOC00_INTERNAL_ID_C	Character (30)	This is a key field.
Functional Location	MI_FNCLOC00 MI_FNCLOC00_FNC_LOC_C	Character (50)	None
CMMS System	MI_FNCLOC00_SAP_SYSTEM_C	Character (255)	This is a key field. Functional Location CMMS System.
Functional Location uniquely identified by System - Functional Location ID	MI_FNCLOC00 MI_FNCLOC00_UNIQUE_ID_C	Character (550)	<p>This field uniquely identifies the functional location using the format <CMMS System> - <Functional Location ID>. This value allows the Data Loader to associate records between the Meridium database and the Predix database.</p> <p>Note: You should not use this field if you have an on-premises implementation of GE Digital APM.</p>
Equipment ID	MI_EQUIP000_EQUIP_ID_C	Character (225)	This is a key field.

Field Caption	Field ID	Data Type (Length)	Comments
CMMS System	MI_EQUIP000_SAP_SYSTEM_C	Character (255)	This is a key field. Equipment CMMS System.
Equipment uniquely identified by System - Equipment ID	MI_EQUIP000 MI_EQUIP000_UNIQUE_ID_C	Character (550)	This field uniquely identifies the equipment using the format <CMMS System> - <Equipment ID>. This value allows the Data Loader to associate records between the Meridium database and the Predix database. Note: You should not use this field if you have an on-premises implementation of GE Digital APM.

FuncLocsToSuperiorFuncLocs

Field Caption	Field ID	Data Type (Length)	Comments
Maintenance Plant	<PRED_FAMILY_ID> MI_FNCLOC00_MAINT_PLNT_C	Character (50)	None
Functional Location Internal ID	<PRED_FAMILY_ID> MI_FNCLOC00_INTERNAL_ID_C	Character (30)	This is a key field.
Functional Location	<PRED_FAMILY_ID> MI_FNCLOC00_FNC_LOC_C	Character (50)	None
CMMS System	<PRED_FAMILY_ID> MI_FNCLOC00_SAP_SYSTEM_C	Character (255)	This is a key field. Functional Location CMMS System.
Functional Location uniquely identified by System - Functional Location ID	<PRED_FAMILY_ID> MI_FNCLOC00_UNIQUE_ID_C	Character (550)	This field uniquely identifies the functional location using the format <CMMS System> - <Functional Location ID>. This value allows the Data Loader to associate records between the Meridium database and the Predix database. Note: You should not use this field if you have an on-premises implementation of GE Digital APM.
Predecessor Family ID	PRED_FAMILY_ID	Character (255)	None
Functional Location Internal ID	<SUCC_FAMILY_ID> MI_FNCLOC00_INTERNAL_ID_C	Character (30)	This is a key field.

Field Caption	Field ID	Data Type (Length)	Comments
Functional Location	<SUCC_FAMILY_ID> MI_FNCLOC00_FNC_LOC_C	Character (50)	None
CMMS System	MI_EQUIP000_SAP_SYSTEM_C	Character (255)	This is a key field. Equipment CMMS System.
Functional Location uniquely identified by System - Functional Location ID	<SUCC_FAMILY_ID> MI_FNCLOC00_UNIQUE_ID_C	Character (550)	This field uniquely identifies the functional location using the format <CMMS System> - <Functional Location ID>. This value allows the Data Loader to associate records between the Meridium database and the Predix database. Note: You should not use this field if you have an on-premises implementation of GE Digital APM.
Successor Family ID	SUCC_FAMILY_ID	Character (255)	This is a key field.

EquipmentToSuperiorEquipment Worksheet

On the EquipmentToSuperiorEquipment worksheet, you specify the hierarchy between an Equipment and its Superior Equipment. This generates the relationships between the entities in the database.

Field Caption	Field ID	Data Type (Length)	Comments
Maintenance Plant	<PRED_FAMILY_ID> MI_EQUIP000_MAINT_PLANT_C	Character (50)	This value identifies the plant responsible for maintenance. This field is not required to contain a value, but entering a value is recommended as it could be useful for searches or data analysis.
CMMS System	<PRED_FAMILY_ID> MI_EQUIP000_SAP_SYSTEM_C	Character (255)	This value identifies the parent family and EAM system as defined in GE Digital APM.
Equipment ID	<PRED_FAMILY_ID> MI_EQUIP000_EQUIP_ID_C	Character (255)	This value identifies the parent family and equipment ID as defined in GE Digital APM.
Predecessor Equipment Unique ID	<PRED_FAMILY_ID> MI_EQUIP000_UNIQUE_ID_C	Character (550)	This field uniquely identifies the equipment using the format <CMMS System> - <Equipment ID>.
Predecessor Family ID	PRED_FAMILY_ID	Character (255)	This value identifies the parent family as defined in GE Digital APM.

Field Caption	Field ID	Data Type (Length)	Comments
CMMS System	<SUCC_FAMILY_ID> MI_EQUIP000_SAP_SYSTEM_C	Character (255)	This value identifies the child family and EAM system as defined in GE Digital APM.
Equipment ID	<SUCC_FAMILY_ID> MI_EQUIP000_EQUIP_ID_C	Character (255)	This value identifies the child family and equipment ID as defined in GE Digital APM.
Successor Equipment Unique ID	<SUCC_FAMILY_ID> MI_EQUIP000_UNIQUE_ID_C	Character (550)	This field uniquely identifies the equipment using the format <CMMS System> - <Equipment ID>.
Successor Family ID	SUCC_FAMILY_ID	Character (255)	This value identifies the child family as defined in GE Digital APM. This is a key field.

The value of this field has the format YYYY-MO-DDTHH:MN:SS.ttt+OOOO, where:

- YYYY is the 4-digit year.
- MO is the 2-digit month.
- DD is the 2-digit day.
- HH is the 2-digit hour in 24-hour time.
- MN is the 2-digit minute.
- SS is the 2-digit second.
- ttt is the 3 digit thousandths of a second.
- OOOO is the 4-digit offset from UTC.

The Configuration worksheet is needed to describe the type of data that you will be loading and how that data should be handled during the data load.

Field Caption	Field ID	Data Type (Length)	Comments
Load Data From Worksheet	LOAD_DATA_WORKSHEET	Boolean	<p>Identifies if data from the corresponding worksheet identified in the Data Worksheet ID column will be loaded or not.</p> <ul style="list-style-type: none"> • True: the corresponding worksheet will be processed. • False: The corresponding worksheet will not be loaded into the Meridium database.
Data Worksheet ID	DATA_WORKSHEET_ID	Character	<p>This column contains the name of the <data> worksheet where the actual data is located. It needs to have the same name as the <data> worksheet in the data loader workbook.</p>
Batch Size	BATCH_SIZE	Character	<p>Modifying this field is required to determine the number of records processed in each batch. Enter the batch size you want, and the Data Loader will process that many records per batch.</p> <p>For example, if you want to use a batch size of 100, enter 100, and the data loader will process 100 records per batch.</p> <p>Note: The recommended batch size is 100. If the Batch Size column is removed from the source workbook, the data loader will default to a batch size of 100.</p> <p>In addition to processing the data in batches, the log file reports progress by batch.</p>

Chapter 6

Automatic Data Loader

Topics:

- [About the Automatic Data Loader Job](#)
- [Set up the Automatic Data Loader Job](#)
- [Configure the Context File](#)
- [Use the Automatic Data Loader](#)
- [The Automatic Data Loader Directories](#)

About the Automatic Data Loader Job

The Automatic Data Loader can load `.xlsx` files created with Microsoft Excel version 2007 and above or `.zip` files into the system from an on-premises installation of APM Connect.

Note: To be able to load data successfully using Automatic Data Loader, make sure that:

- The file name length is not more than 100 characters.
- The file path of the scan directory is not more than 150 characters from root.
- The file name does not contain any special characters.
- Data loader templates are followed for loading the data in excel files.

GE Digital APM provides a method to automatically load data into the system from correctly formatted `.xlsx` or a `.zip` file containing correctly formatted `.csv` files. You must place your data loader workbook in the correct directory for a successful data load.

The job monitors a configured load directory for the presence of a file in a subdirectory and stages the contents of the file into the system. Multiple files moved into the directory are processed in descending order according to the last modified time stamp on each file.

The system logs the staging progress and archives the files in an archive directory. If data fails to stage or upload, a message is written to the log indicating the reason for failure, and the source files are moved to the FAILED FILES directory.

A service then retrieves the staged workbooks, and, using an administrative account, the service invokes the appropriate data loader to load the data contained in the workbooks.

Set up the Automatic Data Loader Job

Before You Begin

APM Connect must be installed.

Procedure

1. Access the APM Connect Administration Center.
2. In the **Menu** pane, in the **Conductor** section, select **Job Conductor**.
3. In the **Job Conductor** toolbar, select **Add**.

The **Execution task** pane is enabled.

4. In the **Execution task** pane, in the **Label** box, enter a label for the job.
5. In the **Description** box, enter a description for the job.
6. Select the **Active** check box.

7. In the **Job** section, select .

The **Import generated code** window appears.

8. Select **Browse...**, and then navigate to the folder containing the updated jobs package.
9. Select the job **dinokeeper.zip**, and then select **Launch upload**.

The job is imported into the **Job Conductor**.

10. [Configure the context file](#) to identify the location of the load directory, the archive directory, and the log file.

11. Modify the <Context_File_PATH> value in the job conductor context parameters to point to the context file for the job.
12. Run the job.

Results

The job conductor indicates that the job ran successfully, and the automatic data loader directories will be created if they do not already exist.

You can now place workbooks in the appropriate data loader directory.

Configure the Context File

Before You Begin

The context file provides the automatic data loader job with the information it needs to locate the directories and log the file it requires.

You should have imported the automatic data loader job.

Procedure

1. Navigate to the following folder: **C:\APMConnect\Config\<system>**
2. Modify the file **ContextFile.xml** to indicate the values for your system.

Parameter	Description	Default or recommended value
CONFIG_FILE_PATH	The path to the context file used for extraction.	Enter your unique value (for example, C:\APMConnect\Config\ContextFile.xml).
SCAN_DIR	The directory that contains the directories from which the job retrieves workbooks to load data.	Enter your unique value (for example, C:\APMConnect\Dinokeeper). Important: Because this job runs with administrative authority, you must control user access to this directory.
ARCHIVE_DIR	The directory that the facility uses to archive workbooks.	Enter your unique value (for example, C:\APMConnect\Archives).
SAP_CLOUD_ENABLED or MAXIMO_CLOUD_ENABLED	Determines whether the Adapter will be used in a cloud environment.	This is a required parameter. You must enter one of the following values: <ul style="list-style-type: none"> • true: Adapters will be run in the cloud. • false: Adapters will be run on premises.
APM_USERID	The GE Digital APM user ID.	Enter your unique value.
APM_PASSWORD	The GE Digital APM password.	Enter your unique value.

Parameter	Description	Default or recommended value
APM_DATASOURCE	The name of the GE Digital APM data source to which the data will be exported.	This is a required parameter only for the on-premises implementation. Enter your unique value.
APM_API_APP_SERVER	The name of the GE Digital APM server	This is a required parameter only for the on-premises implementation. Enter your unique value.
APM_APP_SERVER	The name of the GE Digital APM server	This is a required parameter only for the on-premises implementation. Enter your unique value.

Use the Automatic Data Loader

Use the Automatic Data Loader job to manually or programmatically load asset data to GE Digital APM.

About This Task

By default, the Automatic Data Loader job processes the files in the directories based on the alphanumeric directory name and then the time stamp of the files from oldest to most recent.

Procedure

1. Identify the directory that corresponds to the data loader you are using.
2. Move the data loader files (either a correctly formatted `.xlsx` or a `.zip` file that contains correctly formatted `.csv` files) into the identified directory.

The Automatic Data Loader Directories

The automatic data loader job uses directories within the directory identified in the `SCAN_DIR` parameter to identify the data loader to use for a particular workbook.

Data Loaders and Directories

The following table lists the directories that are created when the job starts that correspond to the various data loaders.

Note: For a Custom Data Loader, you now have the option of creating a directory with the same name as the new Loader ID and process the files within.

Data Loader Name	Folder Name
Family Data Loader	FamilyDataLoader
Equipment and Functional Location Loader	EquipmentFunctionalLocationLoader
Taxonomy Data Loader	TaxonomyLoader
Work History Loader	WorkHistoryLoader
Production Loss Analysis (PLA) 1 - Admin	PLAAdminBatchDataLoader

Data Loader Name	Folder Name
Production Loss Analysis (PLA) 2 - Event	PLAEventBatchDataLoader
Production Loss Analysis (PLA) 3 - Plan	PLAPlanBatchDataLoader
Root Cause Analysis (RCA)	RCABatchDataLoader
System Reliability Data Loader	SystemReliabilityBatchDataLoader
Asset Criticality Analysis (ACA Checklist)	ACACheckListDataLoader
Asset Criticality Analysis (ACA)	ACAMatrixDataLoader
GIS Data Loader	GISDATALOADER
Policy Instance Data Loader	PolicyInstanceBatchDataLoader
Role Data Loader	RolesDataLoader
Rounds Allowable Values	AllowableValuesBatchDataLoader
Rounds Readings	ReadingsBatchDataLoader
Rounds Routes	RouteBatchDataLoader
Rounds Templates and Template Groups	TemplateBatchDataLoader
Inspection Management (IM) Assets	IMBatchAssetDataLoader
Inspection Management (IM) Functional Location	IMBatchFLDataLoader
RBI Components To TML Groups Relationship	RBITMBatchDataLoader
Risk Based Inspection (RBI) 580	RBI580BatchDataLoader
Risk Based Inspection (RBI) 581	RBI581BatchDataLoader
Risk Based Inspection (RBI) Corrosion Loop	RBICorrosionLoopBatchDataLoader
Thickness Monitoring (TM) Equipment	TMBatchAssetDataLoader
Thickness Monitoring (TM) Functional Location	TMBatchFLDataLoader
Thickness Monitoring (TM) Piping Equipment	TMBatchPipingAssetDataLoader
Thickness Monitoring (TM) Piping Functional Location	TMBatchPipingFLDataLoader
Generation Availability Analysis (GAA) GADS Amplification Codes	GAAAmplificationCodeDataLoader
Generation Availability Analysis (GAA) GADS Cause Code	GAACauseCodeDataLoader
Generation Availability Analysis (GAA) Events	GAAEventsDataLoader
Calibration Management	CalibrationBatchDataLoader
Hazard Analysis	HazardAnalysisBatchDataLoader
Asset Strategy Management (ASM)	AsmDataLoader
Asset Strategy Management (ASM) Template	AsmTemplateDataLoader
Failure Modes and Effects Analysis (FMEA)	FMEAAAnalysisDataLoader
Failure Modes and Effects Analysis (FMEA) Analysis Templates	FMEAAAnalysisTemplateDataLoader

Data Loader Name	Folder Name
Failure Modes and Effects Analysis (FMEA) Asset Templates	FMEAAsetTemplateDataLoader
Reliability Centered Maintenance (RCM)	RCMAnalysisDataLoader
Reliability Centered Maintenance (RCM) Analysis Template	RCMAnalysisTemplateDataLoader
Risk Matrix	RiskMatrixDataLoader
GAA Wind Asset Hierarchy	GAAWindAssetHierarchyDataLoader
GAA Wind Events	GAAWindEventDataloader
GAA Wind Sub Group Capacity	GAAWindSubgroupCapacityDataLoader
Rounds Pro - Picklist Dataloader	PicklistDataloader
Rounds Pro - Route Master Dataloader	RouteMasterDataloader
Rounds Pro - Step Dataloader	StepDataloader
Rounds Pro - Step Conditions	StepConditionDataloader
Rounds Pro - Step Template	StepTemplateDataloader

Chapter 7

EAM Adapters

Topics:

- [EAM Adapters](#)
- [System Architecture for EAM Adapter](#)

EAM Adapters

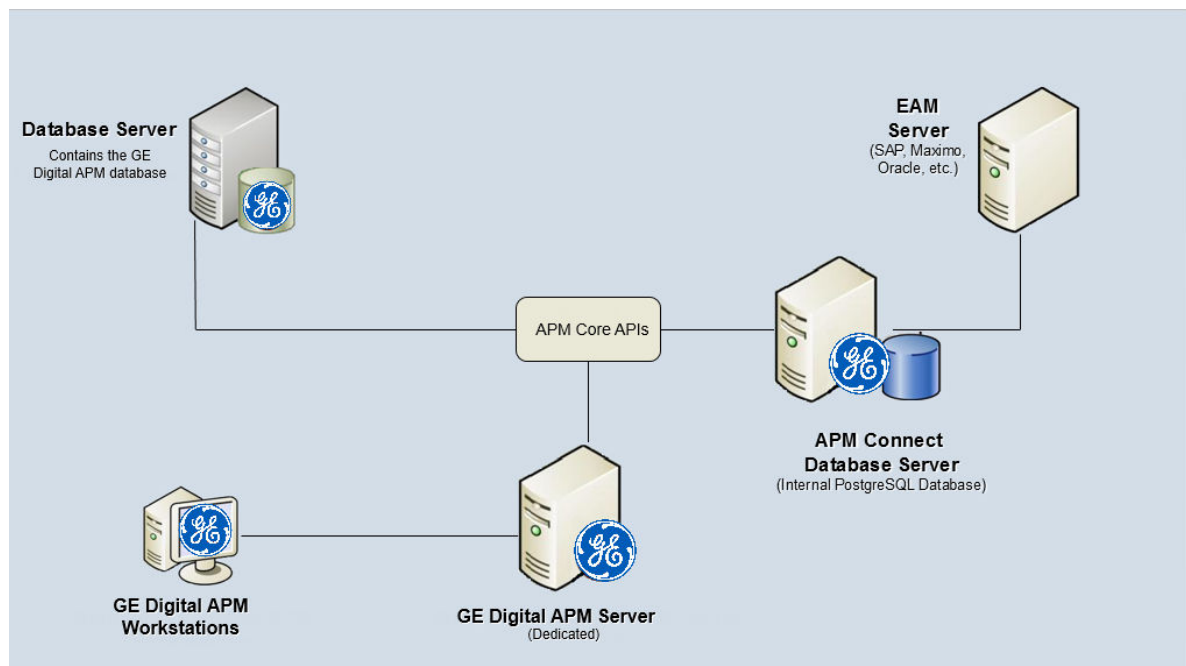
You can use EAM Adapters to ingest data into GE Digital APM using one of the following EAM Adapters:

- [Maximo Adapters](#)
- [SAP Adapters](#)

System Architecture for EAM Adapter

Single Server Configuration (Recommended)

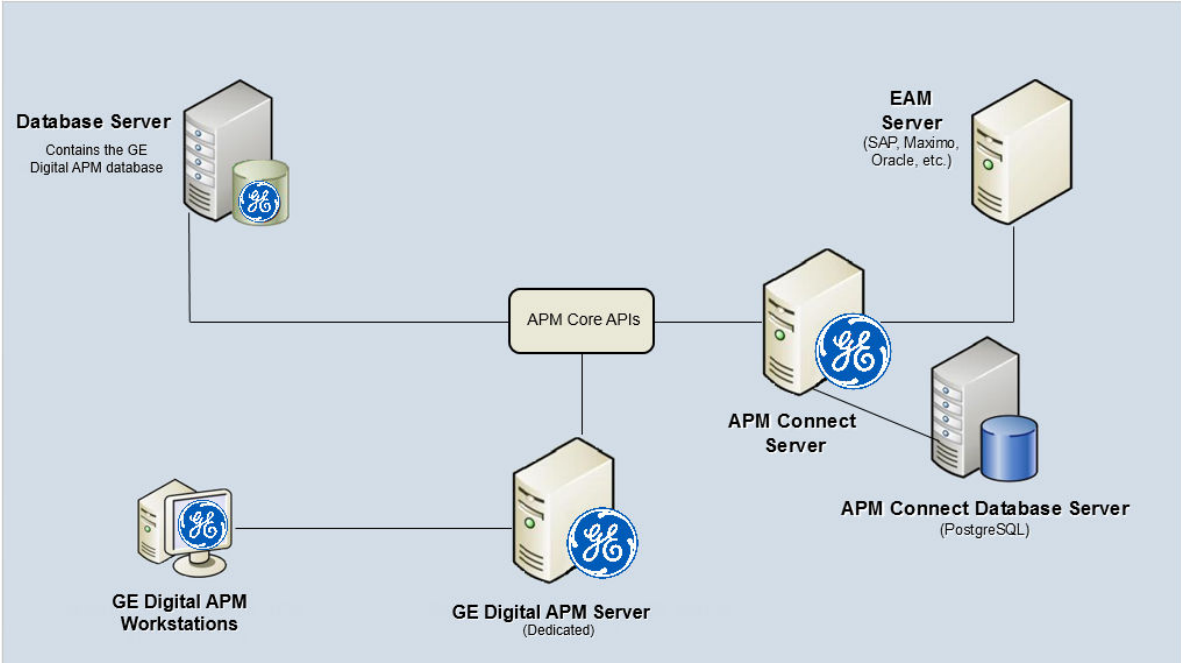
The single server configuration is the simplest way to configure APM Connect. However, it does include an embedded database. The following image depicts this configuration.



External Database Configuration

Many organizations choose to separate their databases. It is possible to install the intermediate repository database on an external server, and to keep the APM Connect Systems database on a different server. The following image depicts this configuration.

Note: The external configuration will affect performance. The single server configuration results in faster performance.



Chapter 8

Reference

Topics:

- [General Reference](#)

General Reference

APM Connect Version Compatibility Table

This topic provides the installation files that are required for an APM Connect installation, and the version structure for APM Connect.

Version Structure

Example:	EAM	SAP	V1	5	2
Description:	Area of APM Connect (that is, Data Loaders, EAM)	EAM System released against (that is, SAP, SAP PI, Maximo)	Architecture Release	Major Release	Maintenance or Patch Release

The following are examples of how to interpret the versions.

- EAM SAP V1.5.0 is the fifth major release on the APM Connect V1.x architecture; it can be applied to the EAM system SAP.
- EAM SAP V1.5.1 is a maintenance release that can be applied to EAM SAP V1.5.0.
- DL V1.4.0 is the fourth major release on the APM Connect V1.x architecture.
- Since V4.3.0.2, all the APM Connect Integration options are merged to a common framework, UDLP – Unified Data Loader Process for Dataloaders and EAMs.

APM Compatibility Table

This table includes only the GE Digital APM versions for which a corresponding APM Connect version was released.

GE Digital APM Framework Version	APM Connect Base	UDLP Version	SAP ABAP Version
V5.0.3.0.0	APM Connect Base V3.0.2 - Patch	UDLP V5.0.2	V7.X
V5.0.2.0.0	APM Connect Base V3.0.2 - Patch	UDLP V5.0.2	V7.X
V5.0.1.0.0	APM Connect Base V3.0.2	UDLP V5.0.0	V7.X
V5.0.0.0.0	APM Connect Base V3.0.2	UDLP V5.0.0	V7.X
V4.6.5.0.0	APM Connect Base V3.0.2 - Patch	UDLP V3.4.0 or V3.3.0	V7.X
V4.6.4.0.0	APM Connect Base V3.0.2	UDLP V3.3.0 or V3.2.0 Note: The UDLP V3.3.0 Jobs work with ABAP V4.X.	V7.X

GE Digital APM Framework Version	APM Connect Base	UDLP Version	SAP ABAP Version
V4.6.3.0.0	APM Connect Base V3.0.2	UDLP V3.3.0 or V3.2.0 Note: The UDLP V3.3.0 Jobs work with ABAP V4.X.	V7.X
V4.6.2.0.0	APM Connect Base V3.0.2	UDLP V3.3.0 or V3.2.0 Note: The UDLP V3.3.0 Jobs work with ABAP V4.X.	V7.X
V4.6.1.0.0	APM Connect Base V3.0.0	UDLP V3.2.0 or V3.1.0	V7.X
V4.6.0.0.0	APM Connect Base V3.0.0	UDLP V3.1.0 or V2.9.0 (Requires APM Connect Base 2.0.0 and ABAP V4.X)	V7.X
V4.5.0.0	APM Connect Base V2.0.0	UDLP V2.9.0 or V2.8.0 or v2.9.0.1 (with ABAP V7.X)	V4.X

Table 2: SAP ABAP Package Certification Matrix

SAP Certificate Number	Certificate Issue Date	Certificate Expiration Date	SAP Version	ABAP Interface Version (as displayed on the certificate)	GE Digital APM Versions
16649	June 26, 2020	June 25, 2023	S4/HANA 1909	V4.X	4.4.x, 4.5.x, 4.6.x, (UDLP 3.3.0)
13857	October 6, 2020	October 5, 2023	ERP (ECC) 6 EHP8	V7.X	4.6.x, 5.x
16864	January 21, 2021	January 20, 2024	S4/HANA Cloud Extended Edition 1909	V7.X	4.5.x*, 4.6.x, 5.x
17051	January 21, 2021	January 20, 2024	S4/HANA 1909	V7.X	4.5.x*, 4.6.x, 5.x
17336	January 21, 2021	January 20, 2024	S4/HANA Cloud Extended Edition 2020	V7.X	4.5.x*, 4.6.x, 5.x
17337	January 21, 2021	January 20, 2024	S4/HANA 2020	V7.X	4.5.x*, 4.6.x, 5.x
20873	October 12, 2022	October 11, 2025	S4/HANA Cloud Extended Edition 2021	V7.X	4.5.x*, 4.6.x, 5.x
20874	October 12, 2022	October 11, 2025	S4/HANA 2021	V7.X	4.5.x*, 4.6.x, 5.x

Note: *You must have UDLP 2.9.0.1 or later to use GE Digital APM V4.5.0.0.0 with SAP ABAP packages of certificate numbers 16864, 17051, 17336, 17337, 20873, and 20874.

Attributes Available for Adding to Notification Creation from APM to SAP

label			
MI_GENRECOM_ALERT_GUID	MI_REC_DAYS_BEF_DUE_DT_N OT_NBR	MI_REC_ASSET_TYPE_CHR	MI_REC_ASSET_ID_CHR
MI_GENRECOM_ALERT_ID_C	MI_REC_STATU_CHANG_BY_CH R	MI_REC_LAST_CHANG_DATE_D T	MI_SM_STATE_OWNER_ID_C
MI_GENRECOM_CASE_GUID	MI_REC_STATU_CHG_BY_NM_C HR	MI_REC_CLOSE_COMME_TX	MI_SM_STATE_ENTERED_D
MI_GENRECOM_CASE_ID_C	MI_REC_WO_INTERFACE_FLAG _F	MI_REC_CLOSE_DATE_DT	MI_REC_ANALY_ID_CHR
MI_GENRECOM_EQUIP_KEY_N	MI_REC_MERIDIUM_TASK_ID_C	MI_REC_COMPL_DATE_DT	MI_REC_CREATE_SAP_NOTIF_F LG
MI_GENRECOM_FUNCT_LOCAT _KEY_N	MI_REC_TYPE_CHR	MI_REC_COMPL_FLG	MI_REC_WK_REQ_REF_CHR
MI_GENRECOM_SOURCE_KEY	MI_REC_WORK_ORDER_NUMB _CHR	MI_REC_CREAT_DATE_DT	MI_REC_WR_EQUIP_C
MI_REC_CAUSE_ID_NBR	MI_REC_LOC_ID_CHR	MI_REC_STATU_CHR	MI_REC_WR_LOC_C
MI_REC_ERP_01_CD_CHR	MI_REC_GENERATE_MERID_TA SK_F	MI_REC_SHORT_DESCR_CHR	MI_REC_NOTIF_TYPE_C
MI_REC_ERP_02_CD_CHR	MI_REC_FINAL_STATE_LOCK_F	MI_REC_LONG_DESCR_TX	MI_REC_TECHNICAL_NUM_C
MI_REC_ERP_03_CD_CHR	MI_REC_FINAL_APPRO_ID_C	MI_REC_LAST_CHANG_BY_CHR	MI_REC_ASSET_DESCR_C
MI_REC_ERP_04_CD_CHR	MI_REC_FINAL_APPROVE_NA ME_C	MI_REC_LAST_CHG_BY_NM_CH R	EVNT_START_DT
MI_REC_ERP_05_CD_CHR	MI_REC_REVIEWER_KEY_NBR	MI_REC_RECOR_NM_CHR	MI_OPR_REC_CRT_OF_MEAS_L OC_F
MI_REC_ERP_06_CD_CHR	MI_REC_ORIG_ENTY_KEY_N	MI_REC_PRIORITY_C	MI_OPR_REC_SOURCE_ML_DE SC_C
MI_REC_ERP_07_CD_CHR	MI_REC_PUB_FLAG_F	MI_REC_FINAL_APPROVER_KE Y_N	MI_OPR_REC_ASSET_KEY_N
MI_REC_ERP_08_CD_CHR	MI_REC_REVIE_NM_CHR	MI_REC_ASST_CL_CHR	MI_OPR_REC_SOURCE_ML_KE Y_N
MI_REC_ERP_01_DESC_CHR	MI_REC_REVIE_CHR	MI_REC_ASST_CTGRY_CHR	MI_SM_STATE_KEY_N
MI_REC_ERP_02_DESC_CHR	MI_REC_REQUI_EQUIP_STATU_ CHR	MI_REC_BASIS	MI_REC_SITE_C
MI_REC_ERP_03_DESC_CHR	MI_REC_REEVAL_EMAIL_TX	MI_REC_AUTHOR_LOCK_F	MI_REC_EAM_REF_CHANGE_D ATE_C
MI_REC_ERP_04_DESC_CHR	MI_REC_ID	MI_REC_AUTH_KEY_NBR	MI_REC_EAM_REF_CREATE_DA TE_C

label			
MI_REC_ERP_05_DESC_CHR	MI_REC_EVNTREF_CHR	MI_REC_ASSIGNEE_KEY_NBR	
MI_REC_ERP_06_DESC_CHR	MI_REC_NOTIF_EMAIL_TEXT_C HR	MI_SM_STATE_ID_C	
MI_REC_ERP_07_DESC_CHR	MI_REC_NOTIFY_RP_FLG	MI_REC_ASSIG_NM_CHR	
MI_REC_ERP_08_DESC_CHR	MI_REC_REEVAL_DT	MI_REC_ASSIG_TO_CHR	
MI_REC_FINAL_ACTIO_TAKEN_ TX	MI_REC_EAM_SERVICE_REQ_I D_C	MI_REC_ANALY_KEY_NBR	
MI_REC_STATU_CHANG_DATE_ DT	MI_REC_IMPAC_CHR	MI_REC_AUTHO_CHR	
MI_REC_DATE_REVIE_DT	MI_REC_RECOR_CHR	MI_REC_AUTHO_NM_CHR	
MI_REC_REEVAL_FLG	MI_REC_NOTIF_AFTER_DD_CH R	MI_REC_TARGE_COMPL_DATE_ DT	
MI_REC_REEVAL_NOTIF_LIST_C HR	MI_REC_LOC_SHRT_DESC_CHR	MI_REC_MANDA_DATE_DT	

About Time Zone Data

GE Digital APM stores the dates and times of transactions in Universal Coordinated Time (UTC) format. This enables the data to flow through the system in a single time zone format. APM Connect supports the time zones defined in [https://docs.microsoft.com/en-us/previous-versions/windows/embedded/gg154758\(v=winembedded.80\)](https://docs.microsoft.com/en-us/previous-versions/windows/embedded/gg154758(v=winembedded.80)).

To provide information with the time stamp relevant to your operations, the system converts UTC to your time zone by using the time zone information configured in your user definition.

Important: If you change the time zone information configured in your user definition, all the records will reflect the new time zone.

The following sections contain the time zone considerations relevant to specific systems.

Maximo

GE Digital APM stores the time stamp associated with the data extracted from Maximo in UTC and displays the time stamp based on your configured time zone.

SAP

SAP provides a set of baseline time zone codes, which contain most of the standard time zones across the world. SAP also provides the ability for administrators to define their own custom time zone, as needed. Before you use a customized time zone, you must configure the `timezone_control` table in APM Connect to include the customized time zone.

SAP defines two types of time zones:

- **System:** This time zone is based on SAP Application Server Operating System and is derived from the context file. You cannot modify this type of time zone.
- **User:** This time zone is based on the user who created the SAP record. You can modify and store this type of time zone in the SAP user interface.

GE Digital APM stores the time stamp associated with the data extracted from SAP in UTC and displays the time stamp based on the time zone configured for the user who created the SAP record.

Note: If the data extracted from SAP contains only the date, then GE Digital APM will assign the time 00:00:00 and adjust the assigned time with the SAP system or user time zone. This may lead to a date mismatch when you choose to display the data in GE Digital APM. To prevent this, GE Digital APM stores the assigned reference time stamp as a string within the data, which is hidden by default. If you need this information, you can configure GE Digital APM to display the data.

Support for Multiple Source Systems

Whether in a cloud environment or an on-premise installation, APM Connect enables you to connect multiple source systems to a single GE Digital APM system.

There are occasions when you need to connect multiple source systems to a single GE Digital APM system. For example, when your company acquires another company, rather than immediately attempting to merge two systems together, you need to keep the systems running separately but want to implement strategies centrally. The two systems might be the same type or of different types. You can configure APM Connect to handle either scenario.

The steps to configure these scenarios is similar to configuring a single system; you repeat the steps that define the EAM system records and, after creating the intermediate repository for the first system, run a job that adds the other systems to the intermediate repository with any required extraction filters.

Multiple Source Systems of the Same Type

This scenario is most useful when you all systems you need to support are the same type. The context file configuration for each source system will look the same for the target GE Digital APM and APM Connect system for all the source systems. The unique parts of the context file are those that describe the particulars of the source system, for example, the system ID and filters used.

Multiple Source Systems of Different Types

Use this scenario if you need to support multiple disparate systems, for example, an SAP and a Maximo system. In this case, you will need to configure context files for each different type of source system, each pointing to the same target GE Digital APM and APM Connect system. This does not preclude having multiple systems of a specific type (for example, one SAP, one ServiceMax, and two Maximo).

Considerations

There are some things to consider when connecting multiple source systems to a single GE Digital APM with APM Connect:

- You must make sure that each source system has a unique system ID.
- The logs will contain the messages from all of the source systems. Each message will identify the source system using the system ID.
- Some source system types have unique requirements that must be performed for each source system. For example, you must run the Static Data job for all SAP systems.
- Each source system in a cloud environment will need an intermediate repository, even though they are communicating with a single tenant.
- Do not schedule running the same adapter job types (for example, functional location extractions) simultaneously from different source systems.

Support for Multiple Culture Settings from a Single Source System

APM Connect enables you to send data to GE Digital APM from a single source system that supports plants using different language or extraction requirements.

Important: This feature is not supported for Technical Characteristics, Work Management, Asset Criticality Analysis, Asset Strategy Management, or Asset Strategy Implementation.

Globalization has increased the need to improve management of assets in different culture settings. Your solution may involve including these new plants in a single source system that communicates with GE Digital APM but requires the data to be presented to the user in their native language. You can accomplish this by configuring APM Connect so that the plants that require specific languages or extractions appear to be different source systems, one for each language or extraction requirement. This capability provides a better user experience for all users of GE Digital APM regardless of their location.

A key advantage of this support is that you can combine your source systems and then configure APM Connect to extract the data correctly.

Considerations

- The user defined in the source system that communicates with GE Digital APM must use the same decimal notation.
- You must have unique system IDs and the correct language parameter value or extraction requirements for each plant.
- You must configure filters to make sure that the data is routed correctly to the specific location.