



# RM STATOR REWINDING IN SITU

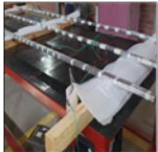
## VPI stator to resin rich coil

### Is stator rewinding in situ possible?

With Power Conversion & Storage the answer is always “Yes”.

To reduce the impact of failed or aged stator winding repairs, Power Conversion & Storage is introducing the VPI (Vacuum Pressure Impregnated) stator to resin rich coil rewind in situ, a pre-engineered solution, with this the motor stator can be repaired in place, still within the vessel.

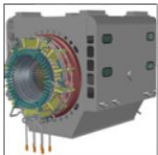
### FACTS ABOUT RESIN RICH COIL



High quality epoxy resin insulation is applied and consolidated during the coil manufacturing process, making the coil robust and resistant to moisture and dirt.



The individual coils and the fully assembled winding are fully tested, thus ensuring the individual dielectric integrity of each coil.

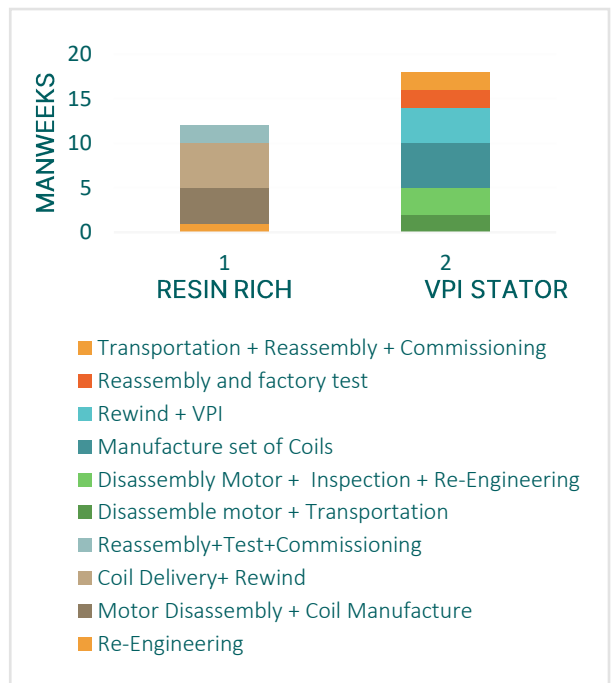


The resin rich coils are more reliable than VPI and are tested at high voltage to meet or exceed all Power Conversion & Storage standards for quality.

### Applicability

- The VPI stator to resin rich rewind is suitable for all rotating machines with frame size 630 and above - typically used in LNG carriers, drill ships, cruise vessels and naval vessels.

### Resin rich Vs VPI stator rewind\*



\*Example repair calendar comparison based on past projects (it might vary)

### Benefits of resin rich coil

- Helps to reduce turnaround time and other related difficulties.
- Helps to reduce various logistic and operational challenges, like disassembly, removal, reassembly and transportation of the bulky VPI rotating machine to and from the repair yard.
- Helps to avoid the various challenges effectively translates into considerable savings in both cost and time.

Our global services teams are well-equipped and have extensive experience performing rewinds inside vessels, including 3<sup>rd</sup> party rotating machines.