

Energizing People > Powering the Future

APPLICATIONS

PEC/PECe architectures

Remote training using virtual labs

Learning objective and performance outcome

Upon completion of this course, the participants will be able to:

- Connect to CPU using the maintenance laptop/PC;
- Understand maintenance laptop/PC software & documentation;
- Practice maintenance operations for control and process systems main components (part replacement & configuration) ;
- Understand the HMI (Human Machine Interface) functionalities;
- Understand the HMI principles/alarm categories;
- Practice on HMI with available tools.

Course content

1. Access to virtual labs through web browser for each participant:
 - Remote connection to a customized CPU;
 - Remote connection to a dedicated maintenance laptop/PC;
 - Remote connection to a customized HMI.
2. Maintenance laptop/PC remote practice:
 - Practice on all main operation/maintenance software & tools;
 - Documentation and drawing use;
 - Reload software to remote CPU;
 - Explanation of software & alarms topologies;
 - Diagnosis files opening and analysis;
 - Practical exercises to validate skills.
3. Remote HMI practice:
 - Navigation on all the mimics;
 - Alarms & faults simulation to practice troubleshooting;
 - Trends generation;
 - Practical exercises to validate skills.
4. 360° views on the control equipment:
 - Connection between maintenance laptop/PC and components (CPU/ cards);
 - Connection of HMI to process network architecture.

IN-DEPTH TRAINING

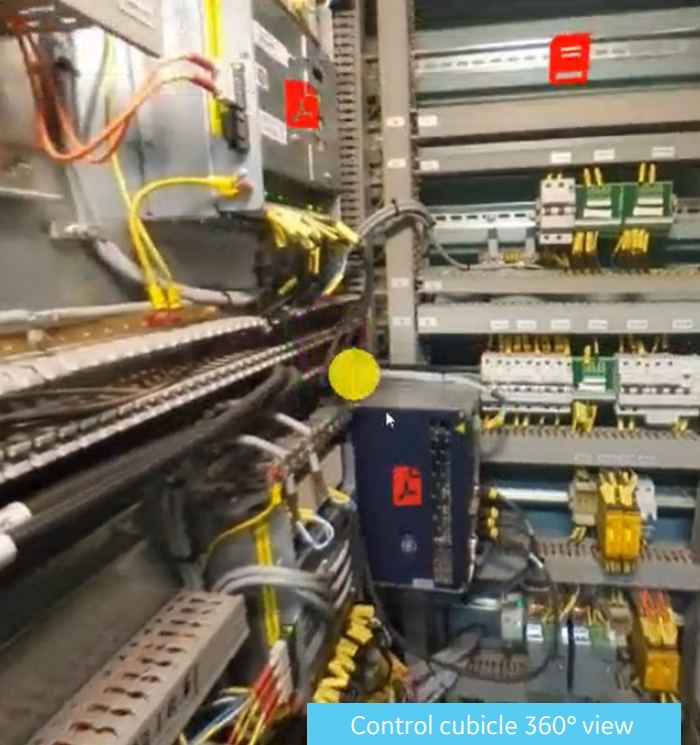
4 x 0,5 day
Prerequisite: Basic training

**FEATURES
MICROSOFT TEAMS
& VIRTUAL LABS**

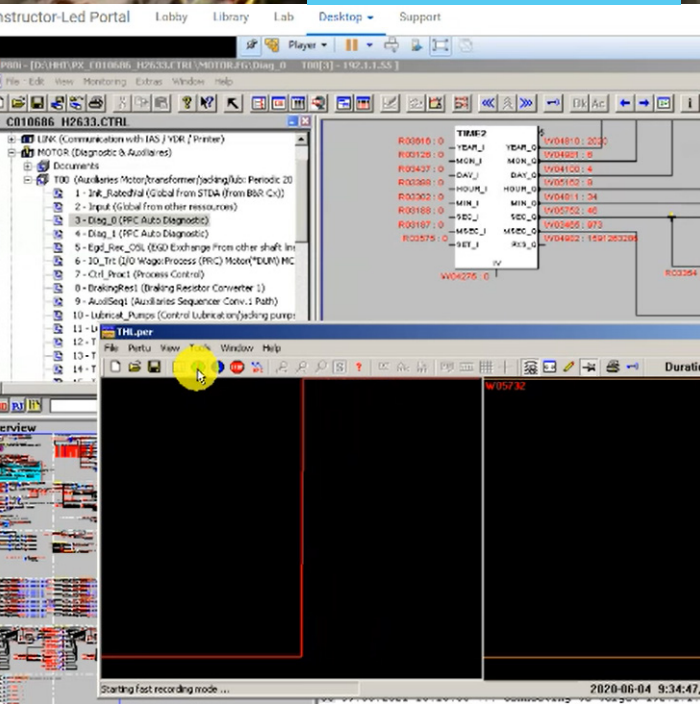
- Access to virtual labs remotely from standard web browser
- Webcams with all the participants
- Webcam with the training officer
- Whiteboards
- Polls
- Interactive quizz
- Question & Answers through Slido tool
- 360° views* of the control & automation architectures

**Subject to availability*

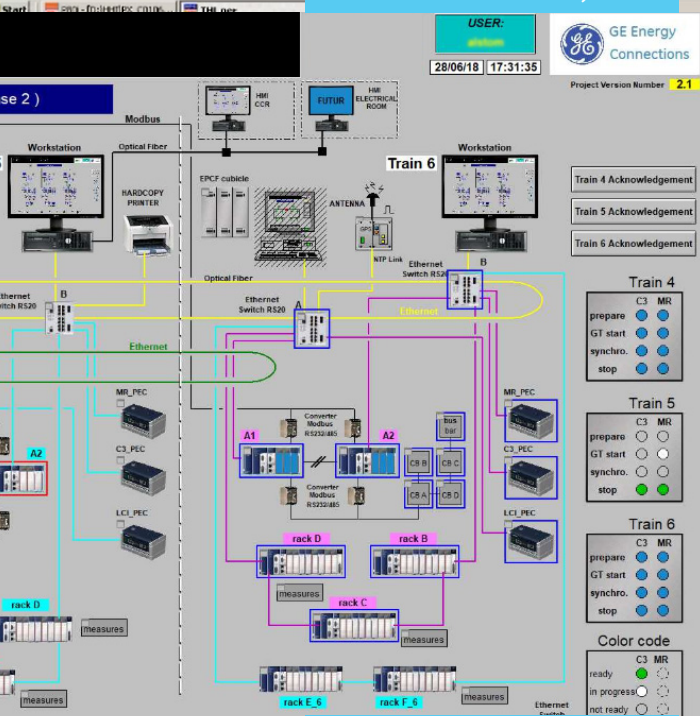




Control cubicle 360° view



GE's drive software in dynamic



Remote HMI in dynamic

Staff training

Staff training is essential for:

- Optimizing the performance of your teams;
- Reducing operation downtime;
- Increasing safety operation;
- Making the dialog with our remote support experts efficient.

Therefore, we have developed the practically oriented training options for our power drives used in Oil & Gas applications, where the participants will **learn how to operate, maintain and troubleshoot the system** with the best instruction method: practical exercises using the right tools.

25+ years of expertise

In our certified training centers, we propose general or specific training courses

These training sessions allow trainees to acquire or refresh their knowledge of electrical VSDDs, on hardware or software used in GE Power Conversion's drives.

Our experts for training, recognized for their skills within GE Power Conversion, can make you benefit from their know-how, ceaselessly improved by their experience on the ground. They can give you theoretical and practical training in the various fields of our activity, on our workstations in the secure environment of our center, or even on your own equipment. We benefit from our varied worldwide experience in Oil & Gas applications such as LNG, Offshore, Downstream, etc.

VILLEBON TRAINING CENTER

18, Avenue du Québec
 Villebon-sur-Yvette, 91140 France
 T +33 1 77 31 20 00
oge.service@ge.com



GEA34848 (09/2021) – ©2021 GE – All rights reserved. GE Power Conversion reserves the right to make changes in specifications shown herein, or discontinue the product described at any time without notice or obligation. Please contact your GE representative for the most current information. GE and the GE Monogram, are trademarks of GE.