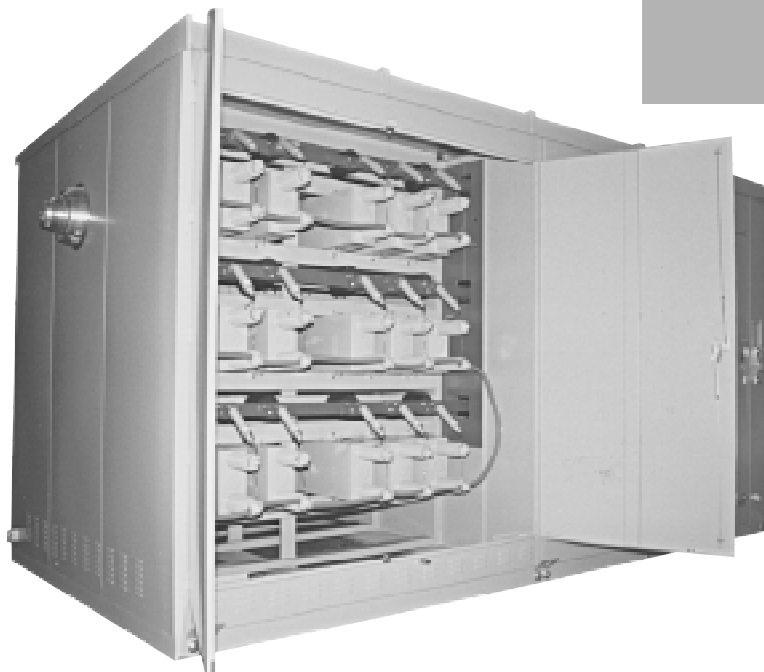




## Medium Voltage Capacitor Equipment Metal Enclosed

### PRODUCT FEATURES:

- To avoid the detrimental impact that rust can have on the equipment, A-60 Galvaneal Steel Enclosure and low carbon steel moving parts (304L) are used in the construction.
- To add integrity to our product, GE uses a welded construction process for structural and grounding purposes.
- Greater reliability through use of copper bus bar (silver or tin plated).
- The control compartments are isolated in a convenient position for user-friendly access.
- A high quality ANSI-C57.12-1998 waterborn paint is used.



# GE Metal Enclosed Capacitor Banks

## APPLICATION

The GE station class (2.4–38kV), metal enclosed capacitor banks are a cost effective means of providing power factor correction and/or harmonic filtering for your distribution feeder.

## DESIGN OPTIONS

Station class, freestanding or pad-mounted, low profile capacitor bank designs from GE are available in an endless variety of design options.

## QUALITY CONSTRUCTION

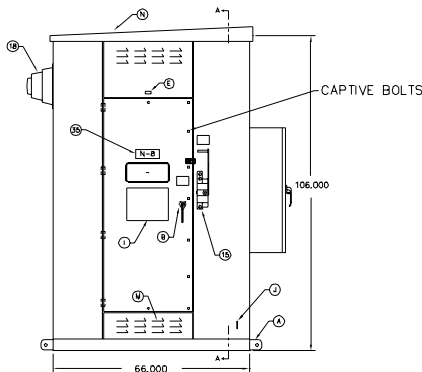
GE's commitment to quality follows through our entire process - from the initial proposal to final energization. Capacitor banks are designed, manufactured, and tested to meet ANSI C57.12.28-1988 requirements for corrosion protection and equipment security.

## STANDARD PRODUCT FEATURES

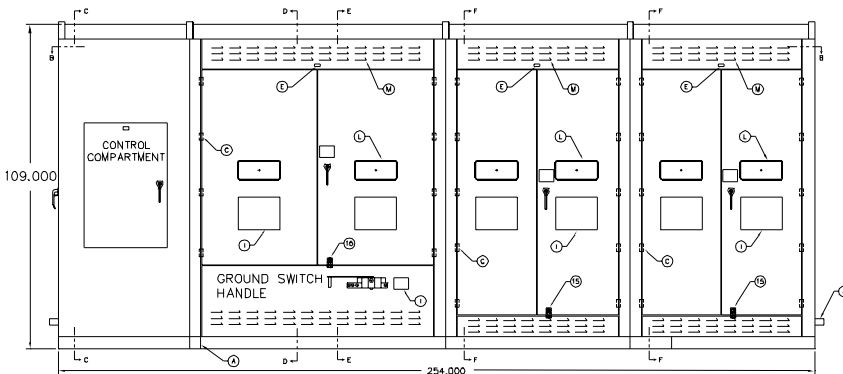
- A-60 Galvanneal Steel Enclosure
  - All-welded Construction
  - Stainless Steel (304L) External Hardware
  - Copper Bus Bar (Silver or Tin Plated)
  - Paint Meets/Exceeds ANSI C57.12.28-1988
  - Stainless Steel (304L) Screened Louvers
  - Interlock Systems
  - Forced Air Ventilation\*
  - Isolated Control Compartments
  - 3-Point, Padlockable Door Latching or SBI "Sentry Latch"
  - Continuous Copper Ground Bus
  - Green-Munsell 7GY 3.29/1.5
  - ANSI 70 Gray-Munsell 8.3G 7.0/0.4
  - ANSI 61 Gray-Munsell 8.3G 6.10/054
  - Ground Switch ANSI Tested to 40 kA
- \*Based on Factory Heat Rise Calculations

## OPTIONS

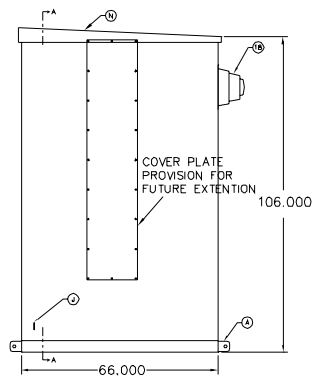
- Stainless Steel (304L, 316 or 316L)
- Aluminum Enclosure
- NEMA-1, 3R, 4, 4X, or 12 Enclosures
- Single or three phase vacuum or oil switching
- Internally Fused Capacitors
- Custom Paint Colors
- Capacitor Removal Device
- Key, Mechanical or Electrical Interlocks



15kV Rating TERMINATION END



15kV Rating FRONT VIEW



15kV Rating CAPACITOR END

All dimensions are in inches.

The capacitor bank illustrations are shown as examples.



GE Industrial Systems

GE Transmission, Distribution & Industrial Systems  
 381 Broadway, Ft. Edward, NY, 12828  
[www.ge.com/capacitor](http://www.ge.com/capacitor)