

Technical Note #73

Creating PMCS CIMPLICITY® view nodes

Subject: Special configuration for a PMCS CIMPLICITY view node, where the viewer not have the CIMPLICITY screens/project copied to the local machine (ie reading these off the server).

Applies To: PMCS CIMPLICITY 5.1b, Event Logger, waveform server, waveform capture

Summary:

Due to issues with the PMCS 5.1b and 6.0 Event Logger, the following install procedure must be utilized in order to assure that the view nodes will be fully operational.

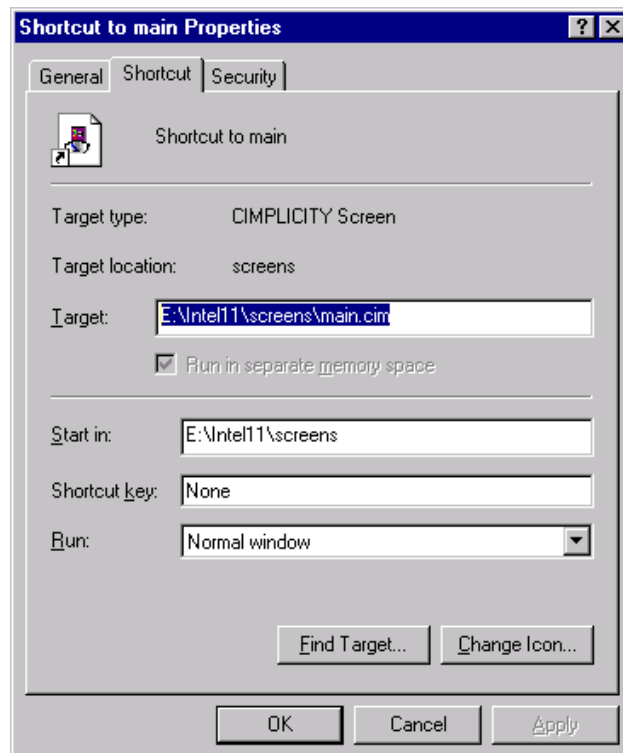
On the view node machine ensure the following:

Network Setup

1. From the Start Menu choose **Settings->Control Panel**. Click on the **Networks** icon under the protocols tab, check that the NetBEUI protocol is installed. If it is not installed it can be added by clicking on the **Add** button and selecting NetBEUI protocol from the Network Product list.
2. Click on the **Services Tab** and ensure that the NetBIOS Interface Service is installed. If it is not installed, it can be added by clicking on the **Add** button and selecting it from the Network Service List.
3. Click on the **Bindings** Tab then click on the **NetBIOS** Interface. Ensure that the first protocol listed is NetBEUI. The protocol access order can be changed by clicking on the **Move Up** or **Move Down** buttons.
4. If any of the previous steps had to be done, the computer must be rebooted.

CIMPLICITY SetUp

1. Install CIMPLICITY on to the View Node machine.
2. Create a shared drive to the host machines c:\cimplicity\hmi\projects directory
3. Create a desktop link across the shared drive to the main CIM screen. For a a project named Intel 11 and the shared drive being "E:" the shortcut Target would look like:



This link will be the "connection point" for the CIMPLICITY project from the view node. Note: This set up holds for server and view node on the same subnet, if the machines are on different subnets, refer to CIMPLICITY HMI documentation for the additional command line and path changes needed.

PMCS SetUp

1. Install PMCS on the view node machine. Once it is installed, there is a choice to install the ODBC drivers. When the ODBC setup of PMCS 5.1b is used, you may see an error while registering a dll. This is because on NT 4.0 service pack 3, ignore it and continue. ODBC install should complete successfully.
2. Refer to the Alarm & Event Logger Help file or the *Installation and Getting Started Guide GEH-6514* for how to manually setup the PMCS Event Logger ODBC configuration.
3. From the Start menu go to **Programs->GE PMCS 5.1b->Waveform Client.**
4. Once the waveform client is started, the user will be prompted to find the INI file of the Waveform Server. Go out to the network neighborhood and go to the server computer. Select the file: <server machine>\ge_pmcs\wfserver\wfserver.ini. **Do not set this path for this file through any shared directories!**
5. From the Start menu go to Programs->GE PMCS 5.1b->Alarm and Event logger
6. Create the devices in the Event Logger by choosing **File->configure->topic**. The topic name will be the name of the device as defined in the GE DDE server. The application will be \\ < server machine> \ <GE32MODB or GE32ENET>. Choose the device type and click on **Add**. Once this is completed, close down the Event Logger. All the device configuration information from the client Event Logger is stored in the eventlog.ini file in the \ge_pmcs\eventlog\eventlog.ini file. Instead of repeating this step for all view nodes, you may want to simply copy this file to the eventlog directory on the other view nodes.
7. On the server machine go into the \cimplicity\hmi\projects directory and create the following path \ge_pmcs\eventlog\. Copy the eventlog.ini file from the c:\ge_pmcs\eventlog\ directory on the client machine to this new directory on the server. This step only needs to be done once, it does not need to be repeated from every client. However, if devices are added to the server at a later date, this may have repeated.
8. Restart the Event Logger on the client. If the shared directory for the project has been set correctly, it should start attempting to advise on all GE devices. If an error message comes up stating that it cannot find the eventlog.ini, ensure that shortcut created in step 2 of the CIMPLICITY Setup is pointing at the right drive and directory.

Last Revised 5/27/99