

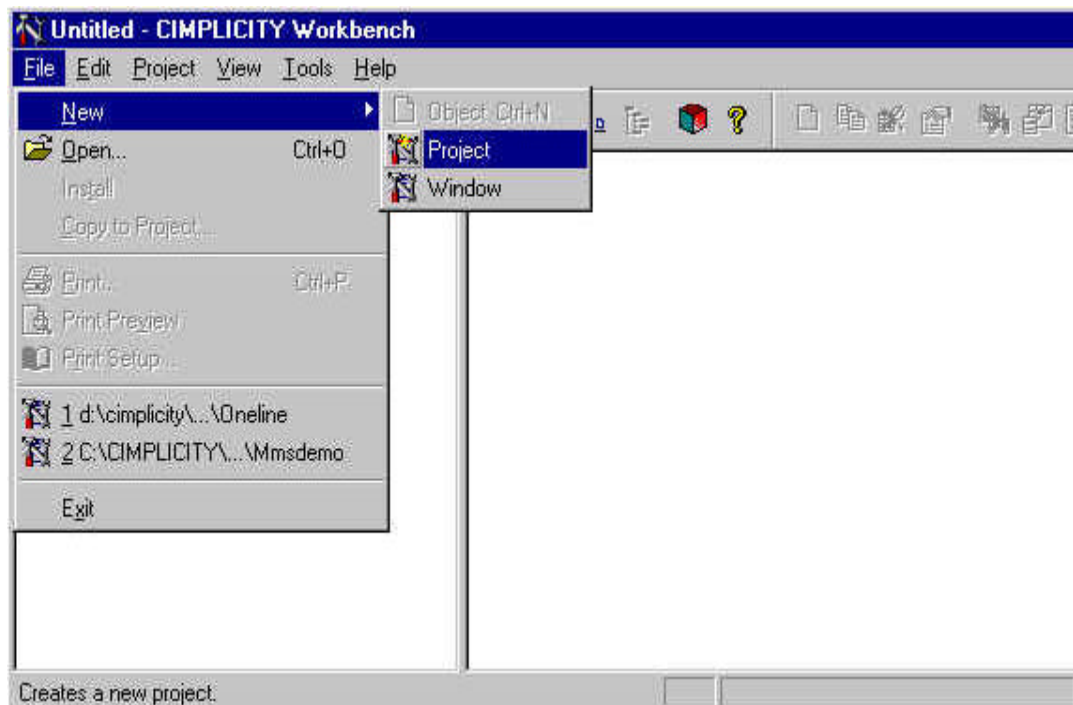
Technical Note #72

Cimplicity 4.0 PMCS 5.1b Installation Notes

Copyright © 1999 GE Industrial Systems. All Rights Reserved.

The following changes apply to Chapter Two of the Cimplicity PMCS Interface Toolkit DEH210.

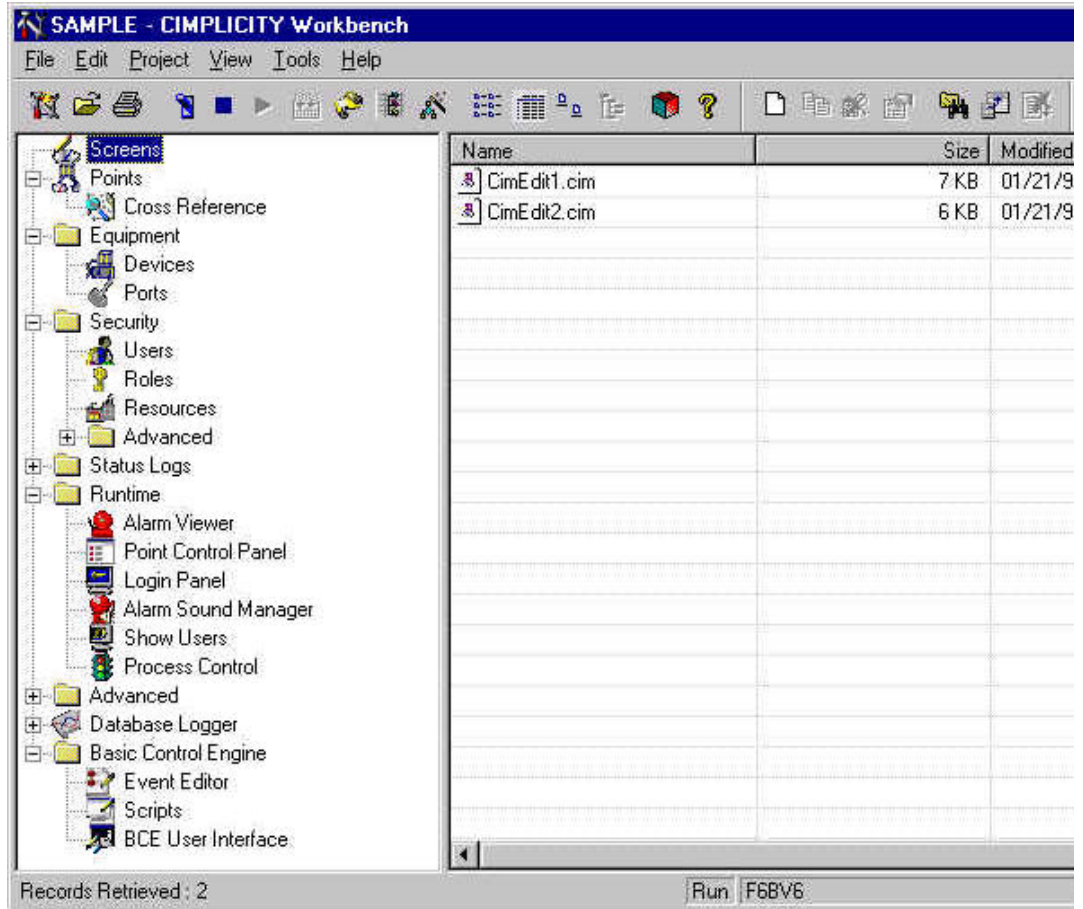
1. To start a new Cimplicity Project, from the Start menu choose Programs -> Cimplicity -> F Workbench. The work bench is the 4.0 equivalent to the Project configuration cabinet.
2. From the Workbench choose, File -> New -> Project



The rest of the initial project configuration remains the same. The Cimplicity Workbench replicates Configuration Cabinet in an explorer like format. Most of the configuration cabinet options can be expanded by clicking on the left-hand side menu as shown on the next page. The noticeable missing component which can be started by either double clicking on the screens icon:



Or right clicking on the right window and choosing New when the Screens icon is selected.



Once the CimEdit screen is created and saved, it will not show up in the Screens window until the has been refreshed.

How to use GEFsmallfaceplates

This PMCS Cimplicity release installs the GEF small faceplates in the object explorer, which do n standard wizards. This procedure is an excerpt of the original Cimplicity appnote on how to use th

1. Open CimEdit from the configuration cabinet of your project.


2.  Click on the Object Explorer button on the toolbar.

3. Get to the small faceplate symbols by opening the tree on the left to PMCS WIZARDS\Small Faceplate I

4. Drop the smallfaceplate required, by double clicking on its symbol.

5. Back in CimEdit, now open the frame container of the wizard by selecting the ‘Open Fra Container’ option in the ‘Frame’ menu item on the Menu bar.

6. Double click on the smallfaceplate and open the ‘Events’ tab of the property pages.

7. Edit the Onclick Procedure by clicking on the  Button on the right of ‘Action:’ and select the ‘Edit’ option. It is advisable that you change

procedure name OnClick to a more meaningful name such as the name or identification of the device. This can be done by typing another name in the 'Procedure Name:' edit box. *This is important if you intend putting several small faceplates on the same screen. If you do not rename the procedure, CimEdit will automatically do that for you as soon as it finds a conflict procedure names. CimEdit appends a number at the end of the procedure name.*

8. The screen name says Destination Screen. Change this to the name of screen you want to on click of this symbol.

9. The wizard is configured for 'Open Screen' action. You can change it to 'Overlay Screen' selecting from the listbox on the right of 'Action Type:'. *An 'Open Screen' action opens the specified CIMPLICITY screen as a new window and retains the old window while an 'Overlay Screen' opens the specified screen in the same window, and closes the old window.*

10. Optionally select and configure other attributes of this screen transfer. *For a detailed description of the attributes associated with screen transfers, refer to the document **GFK-1. -- CIMPLICITY HMI for Windows NT and Windows 95 CimEdit Operation Manual**. This manual can be viewed from the CIMPLICITY Book Reader which can be installed from CIMPLICITY HMI CD.*

Last Revised 6/1/99

[GE home page](#)

[GE Industrial Systems home page](#)

[Search GE](#) | [GE home page](#) | [GE news](#) | [GE business finder](#) | [GE products & services](#)
[About Us](#) | [What's New](#) | [Products & Services](#) | [Publications](#)
[Process Solutions](#) | [Year 2000](#) | [Contact Us](#)

[Legal Disclaimer](#)