



## GE Power Management Control System

[GE ED&C Home](#) | [Search ED&C](#) | [GE ED&C Power Management Home](#) | [GE ED&C PMCS Home](#)

### Technical Note #47

**GE Power  
Management Control  
System**

### Installing Wonderware Scout

- [Description](#)
  - Software
  - Hardware
- [Operation](#)
- [Product Support](#)
- [Operator Interfaces](#)
- [F A Q's](#)
- [App Notes](#)
- [Download Area](#)
- [Manuals](#)

#### Useful Information

- [Glossary of Terms](#)
- [Useful Links](#)
- [Search Tech support](#)

**We want to hear  
from you!**

- Service and Support [locations](#) around the world . . .

**Subject:** Wonderware Scout Capabilities and Installation guide

**Applies To:** Wonderware Scout visualization tool

### Wonderware Scout

Scout is visualization tool that allows the user to view real-time process data over the internet or a local intranet. Scout consists of two parts:

#### Scout Outpost

- Server - obtains the data
- data agents
- InternetDDE data collector
- "Data transmitter"

#### Scout VT

- Client - where user views data
- Receives data from Scout data agent
- Uses the web server as a channel to communicate with its data agents
- Allows a user to configure display object within a layout

Scout Outpost contains documents, graphics and data collector called InterNetDDE. Scout VT is the browser which uses Microsoft Internet Explorer as its gate to the internet data.

Scout can perform a number of different functions using various data agents, some of which are:

- Retrieve process data from Intouch
- Trend PMCS data
- Display Intouch Screen (In next version)
- Real-time data can be retrieved from an Excel worksheet
- Write and retrieve dynamically created data from a .csv file on the Outpost
- Set values can be passed into a .csv file located on the outpost, and displayed in a chart
- Retrieve data from a .csv file and display the real-time data in a bar or trend chart
- Retrieve and update data from a SQL Server database on a remote node
- Share information located on the outpost
- Retrieve data from an outpost every second and stream into a Java applet

Scout VT 2.0 is not currently capable of displaying Intouch screens or tabular data. However this will be a feature in the release of Factory Suite 2000.

Data agents to utilize .csv files and other data types are available as free downloads on the Scout web site:

<http://scout.wonderware.com>

Online help, FAQ's, up-to-date versions of Scout VT, and other information is also available.

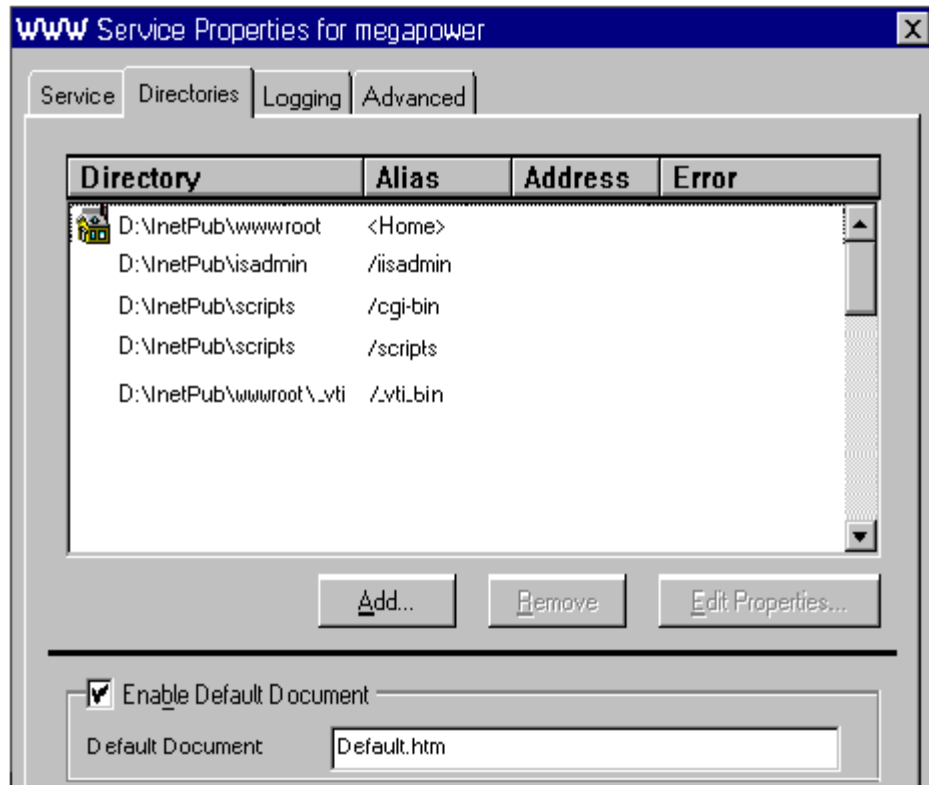
For information on setting up an Outpost review [Installing Scout Outpost](#)

For information on installing Scout VT to browse an Outpost review [Installing Scout VT](#)

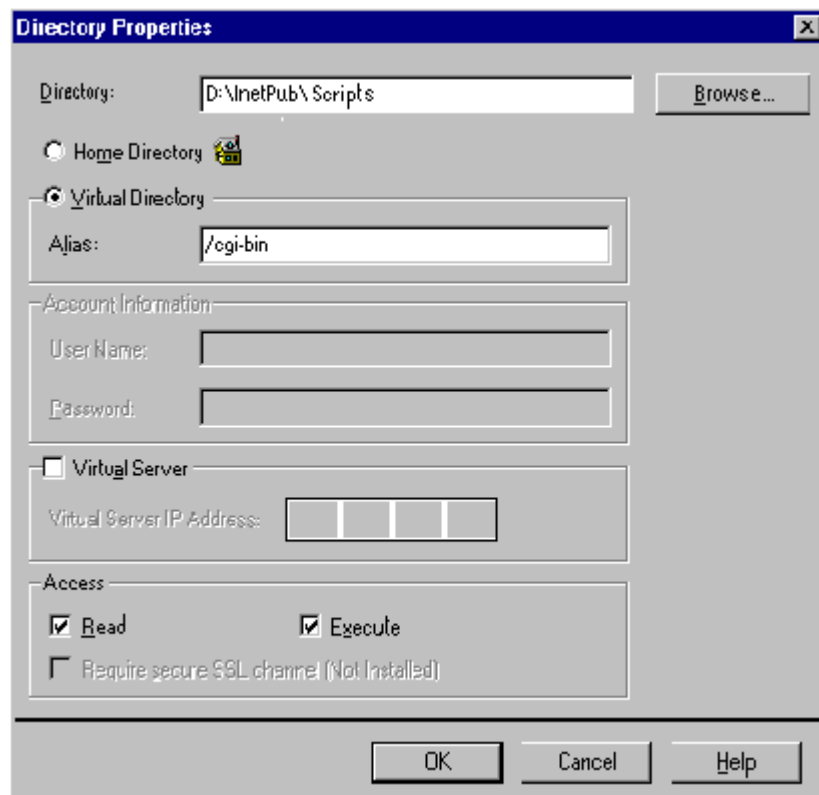
## Scout Installation Guide

### Installing Scout Outpost

1. If the intranet server is not an NT 4.0 server (currently ED&C is running a Sun Spark 10) Microsoft Peer Web Services (PWS) must be installed to create a new intranet. This is included in the NT 4.0 workstation package, so to begin installation go to **Control Panel** and select **Network** click on **Services**. If Microsoft Peer Web Services is not checked in the list click on **Add**. Select Peer Web Services and say **OK**. You will then be prompted to insert the NT 4.0 Disk. Follow the onscreen instructions for installation.
2. Once Peer Web Services is installed check that your intranet is running properly. Place a .htm file in the directory C:\InetPub\wwwroot. Then go to another machine and using Netscape or another web browser, and type http://computename.filename.htm. Your .htm file should appear. If not, first verify that the computername is correct. If that is not the problem go back to your new intranet server and open the **Control Panel** then select **Services** to make sure that WWW Publishing Services and Remote Procedure Call Services Started Automatic. Try Stopping and restarting. If the problem is not resolved contact your network administrator.
3. If PWS is up and running you can then begin to prepare to install Scout Outpost on the machine running PWS. First, verify that you are logged in using an account with administrator privileges.
4. Next, determine whether a cgi-bin virtual directory exists and create it if necessary. Go to **Start** and select **Microsoft Peer Web Services**. Select **Internet Server Manager**. Select **directories**.



If there is not an entry called C:\inetpub\scripts /cgi-bin one must be created. Select **Add**.



Type in C:\inetpub\scripts. Select **Virtual directory**. Under Alias enter "/cgi-bin" then select **Read** and **Execute**. Finally select **OK**.

5. An "Impersonation Account" must be set up on all computers that will share data as well on the server. This must be a LAN account, and therefore can be an existing username and password, however it must be added to each computer.
6. Enable the guest account on all participating machines. Choose **Start** and select **Administrative Tools**. Select **User Manager**. Double click on the **Guest** Account, and Uncheck the **Disable Account** box. Select **OK**.
7. Insert the Scout disk into the cd-rom drive. Access that drive and double click on the **ScoutPost** self-extracting setup file.
8. You will be asked the location of the web servers WWW root, which is a directory created for the HTTP server and is the servers home or root directory. The default WWW root directory for Peer Web Services is C:\InetPub\wwwroot.
9. You will be asked for the CGI program directory. As long as you have created the virtual cgi-bin directory the default path for PWS is C:\InetPub\Scripts.
10. Scout configuration requires that you specify enabled or disabled restricted access from Scout VT by using password protection. Leaving the password blank allows open access to all Scout VT users.
11. You will be prompted for the domain, username and password of your outpost. The domain is the computer name of the computer where PWS and the Outpost will be running. The username and password should be exactly the same as the "Impersonation Account" created earlier.
12. After the installation is complete you **MUST** grant read permission to "Everyone" on the following five directories : Portfolios, Reports, PGraphics, Documents, SSTL (all of these are located in the C:\InetPub\Scripts directory).

1. **Setting Permissions:**

Go to **Start**, select **Run**

Type in winfile.

Locate the first directory that you wish to set permissions for

Select the directory

Select **Security**

Choose **Permissions**

Highlight **Everyone**.

Change "Type of Access" to **Read**

Select **OK**

Repeat for the remaining four directories.

13. To use the InternetDDE features, you will need to set up NetDDE shares on all computers that will transfer data:

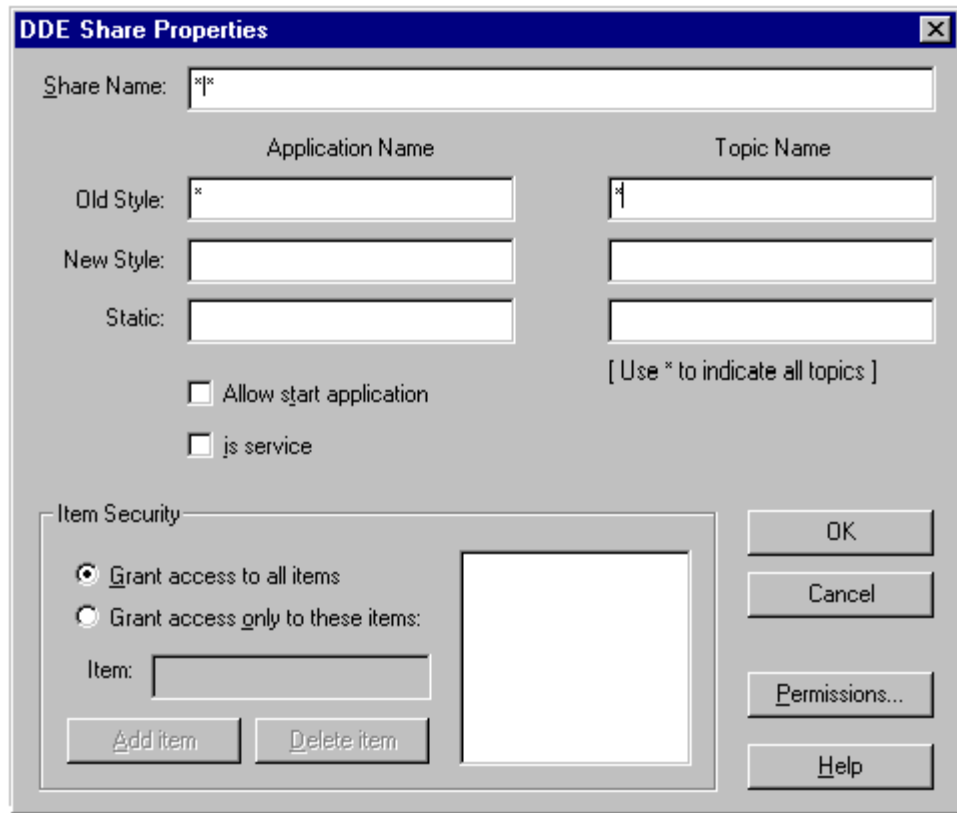
1. **Share Procedure:**

Go to **Start**, select **Run**.

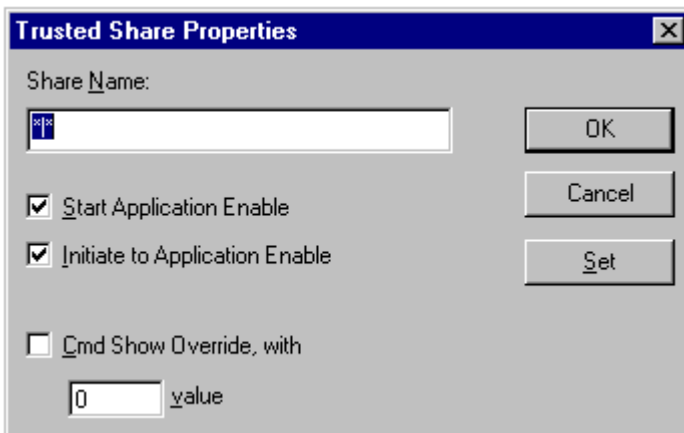
Type in DDEshare.

Select **Shares**.

Select **Add** a share.



1. Type in \*|\* for the share name  
Type in \* for Application  
Type in \* for Topic  
Go to **Permissions** Select **Full Control**  
Select **OK**  
Select **OK**  
Select your new Share  
Select **Trust Share**



1. Select **Start Application Enable** and **Initiate to Application Enable**  
Select **Set**  
Select **OK**.

\*\*If after installing ScoutVT data appears to be transmitting and receiving but the values are zeroes you may try deleting and re-adding the share.

**Configuring Intouch for use with Scout VT:**

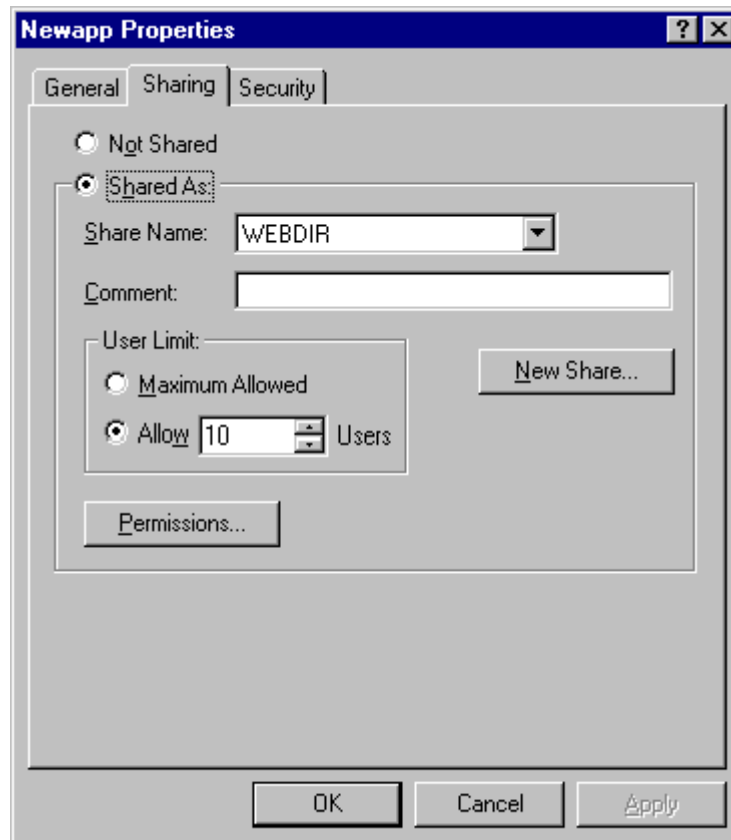
1. Create a Tag named WEBDIR (Type = Memory Message)

2. A file share will need to be created for WEBDIR.

1. To create a share for WEBDIR in Windows NT:

Open the WINNT explorer and select the directory where your tagnames.ndx exists (usually C:\Intouch.32\Applicationname ).

Once you have located the .ndx file click on the directory with the right mouse button. Select the **Sharing** option.



1. Check the **Share As** option.

Under **Share Name** type the new tagname WEBDIR. (Note! If a share already exists select "New Share" and type WEBDIR)

Under the general area you must enable **Read** by checking the box.

3. Set the value of "WEBDIR" in Intouch to the full path to the Tag List file. This path must be in the specified as a UNC of the form "\\machine\share>tagnames.ndx"

*Example 1--access all Intouch tags*

If your Intouch Application "MyApp" runs on a node "Node1" from the "Intouch.32" directory on drive d: the complete path is: d:\Intouch.32\MyApp>tagnames.ndx

To turn this into a UNC path create a share called webdir corresponding to "d:\intouch.16\MyApp" yields:

\\Node1\webdir>tagnames.ndx Set the value of the tag WEBDIR to this value

*Example 2--access only select Intouch tags*

Create a text file with a list of the tags you want to allow access to. This file is a simple list of tags separated by spaces, tabs, or carriage returns.

If your Intouch Application "MyApp" runs on a node "Node1" from the "Intouch.32" directory on drive d: and your tag list file is called tags.txt then the complete path is: d:\Intouch.32\MyApp\tags.txt  
To turn this into a UNC path create a share called webdir corresponding to "d:\intouch.16\MyApp" yields:  
\\Node1\webdir\tags.txt Set the value of the tag WEBDIR to this value

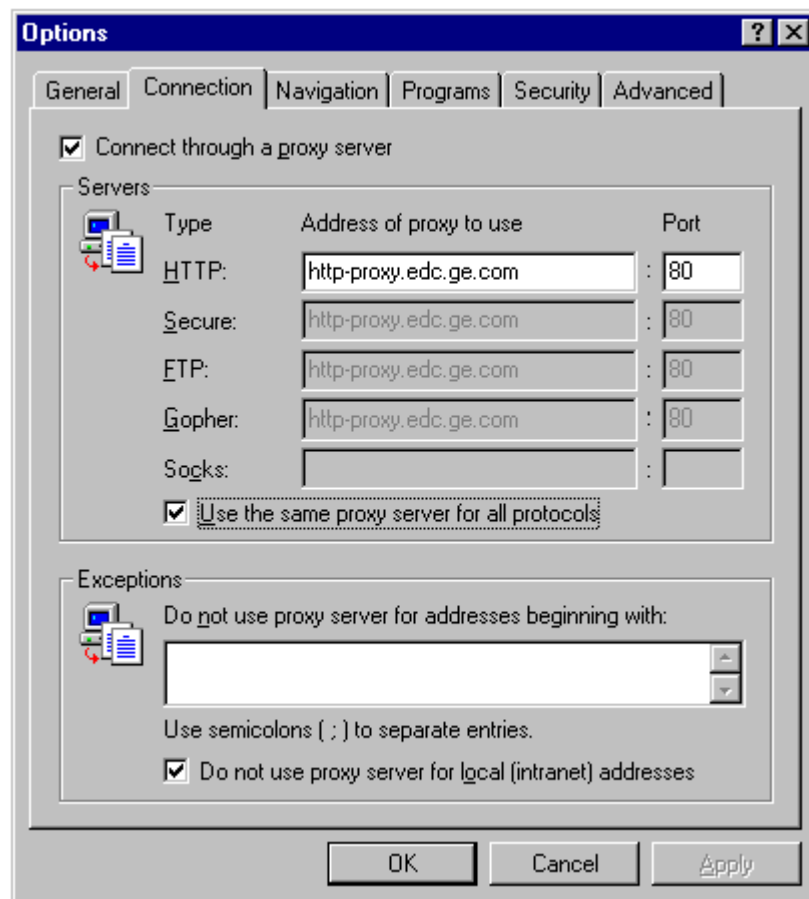
### Installing Scout VT

1. In order to begin Scout VT installation, first ensure that you have Microsoft Internet Explorer 3.01 or higher installed on your computer. If not, download and install the program from <http://scout.wonderware.com> in the download section, or <http://microsoft.com>.
2. Download the latest version of Scout VT from the Scout site, <http://scout.wonderware.com> into a temporary directory.
3. Go to that temporary directory where Scout VT was downloaded, and double-click on the self extracting setup file. Follow the on screen instructions.

Scout VT is now installed!

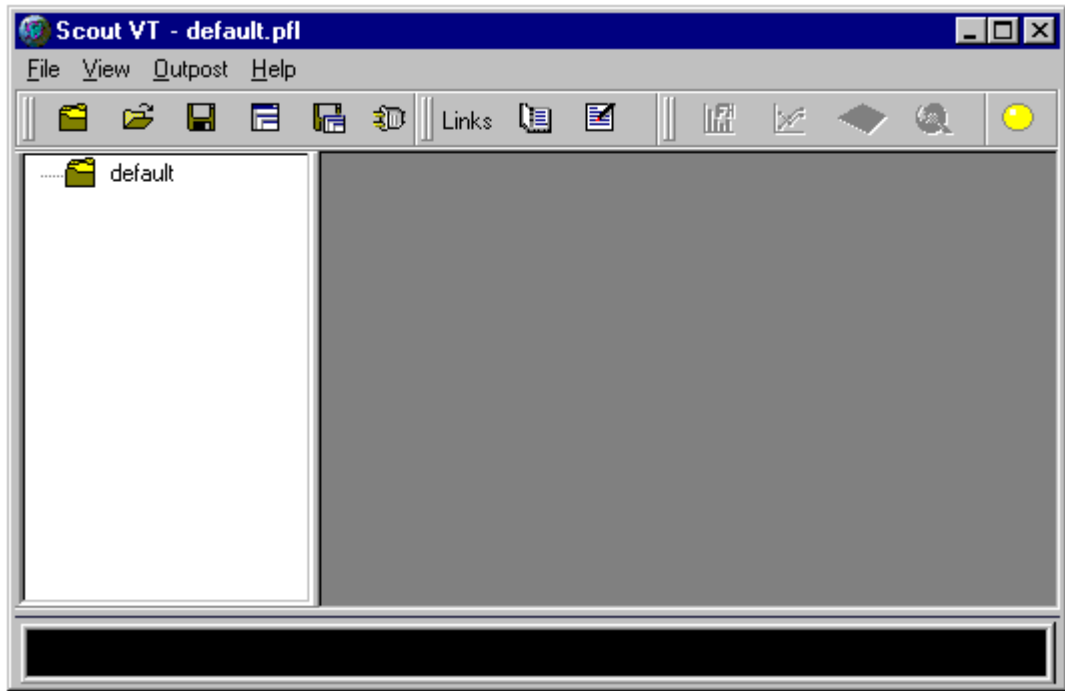
*To View Wonderware's Demo Outpost:*

1. Open Internet Explorer. Choose **View**. Select **Options**.
2. Select **Connection**.



3. Select **Connect through a Proxy** and Type the address of your proxy for ED&C this is "http-proxy.edc.ge.com" under **HTTP**, and "8080" under **Port**.
4. Select **Use the same proxy for all protocols**

5. Select **Do not use proxy server for local (intranet) addresses**
6. Select **OK**
7. Exit Internet Explorer
8. Open Scout VT



9. Select **Outpost**. Select **Browse Outpost**.
10. A tree diagram will appear. Double-click on the outpost labeled "scout.wonderware.com".





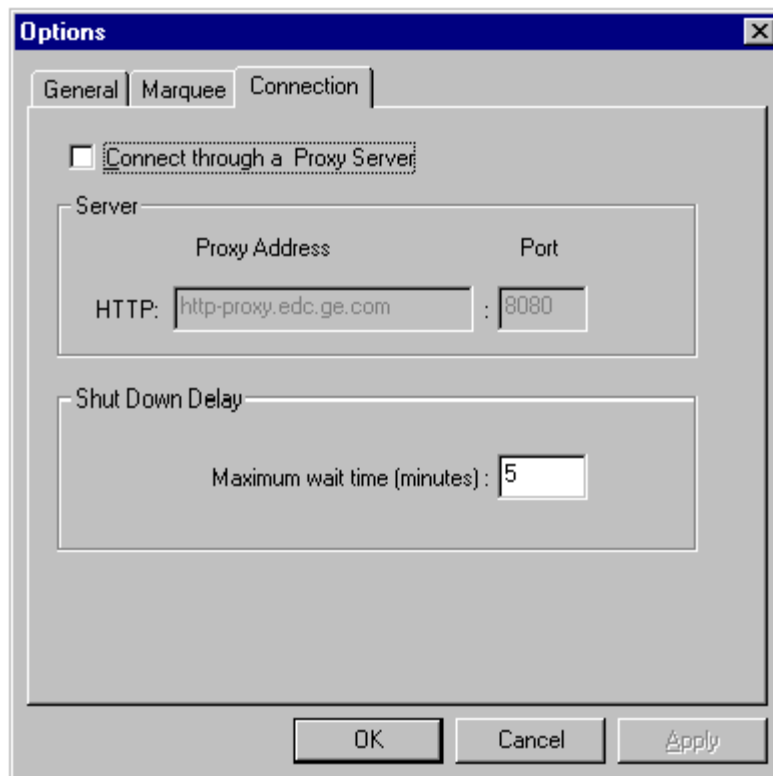
11. Icons will appear under the Outpost. Double click on any of the icons to display the files in in the selected directory.

12. Select the item that you wish to view, and double-click on it to download the item.

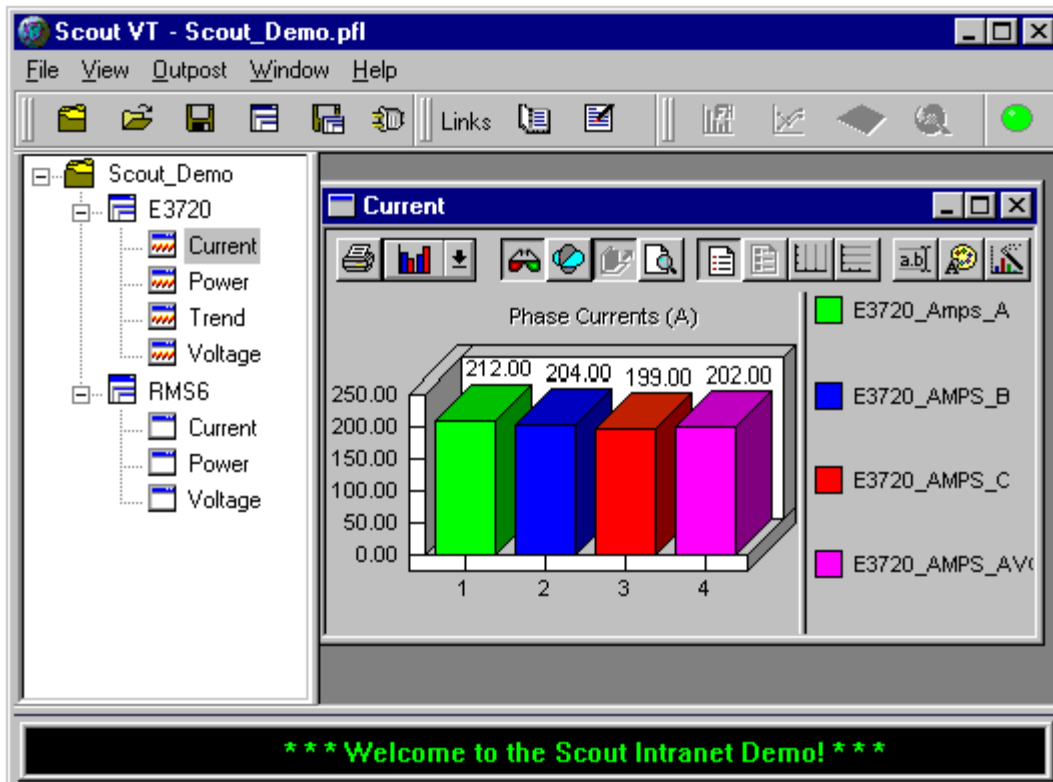
13. Select **Outpost**. Select **Connect All** to connect the data.

*To View ED&C's Demo Outpost:*

1. Open Scout VT
2. Select **View** and **Options**. Go to **Connection**.



3. Disable the **Use Proxy** box. If it is not enabled just continue.
4. Select **Outpost**. Choose **Add Outpost**.
5. In the dialogue box type the IP address of the Outpost server - 3.46.20.44
6. Select **OK**
7. Double click on the newly added Outpost.
8. Icons will appear under the Outpost. Double click on any of the icons to display the files in in the selected directory.
9. Select the item that you wish to view, and double-click on it to download the item.
10. Select **Outpost**. Choose **Connect All** to connect the data.



**Keywords**

Scout Outpost, Scout VT, Microsoft Peer Web Services

**Related Notes**

none

Last Revised 7/1/97

[GE home page](#)

[Search ED&C](#) | [GE home page](#) | [GE news](#) | [GE business finder](#) | [GE products & services](#)