

MDS 9810 SOFTWARE RELEASE V2.5

For all MDS 9810 radio transceivers manufactured before July, 1998.

INTRODUCTION

The software for the MDS 9810 transceiver has been updated to Version 2.5. A field upgrade is now available for customer installation into radios with earlier versions of the software. Radios with this new version are fully compatible with older MDS 9810 transceivers containing previous versions of the software. In addition, any unit returned to the factory for repair will automatically be updated to this release.

MDS does not recommend upgrading to this version unless your system requires sleep mode functionality. Radios may be updated directly to 2.5 from any previous released version.

HOW TO OBTAIN THE SOFTWARE UPGRADE

The upgrade software, 9810X20.S28 is available from:

1. The MDS Internet FTP site at “<ftp://www.mdsroc.com/Software/9810/9810X220.S28>”
2. The MDS BBS at (716) 242-8426 under “software/9810”
3. MDS on floppy disk. Fill in the request form in this bulletin and FAX it to MDS or prepare an e-mail message with the same information and send it to sales@mdsroc.com.
4. As an e-mail attachment (≈140k)

RADIO SOFTWARE UPGRADE WITH A PC

You must use the MDS *REMOTE Radio Diagnostics* software (Version 1.3 or later) in order to load this release into your radios. If needed, this software is also available through our Internet FTP site or our dial-up bulletin board system (BBS) under the software name “Remote Radio Diagnostics”.

Installing the New Radio Software

Using the *REMOTE Radio Diagnostics* software, select RADIO SOFTWARE UPGRADE under the SYSTEM menu. Follow the prompts and online instructions to determine how to proceed.

Software upgrades are distributed as ASCII files with a “.S28” extension. These files use the Motorola S-record format. When the download is activated, the radio’s **PWR LED** will flash rapidly confirming that a download is in process. The download takes about two minutes.

NOTE: If a download to the radio fails, the radio is left unprogrammed and inoperative. This is indicated by the **PWR LED** flashing slowly (1 second on/1 second off). The download can be attempted again should this happen.

Connecting a PC

To connect a PC to the radio's **DIAGNOSTICS** port, an RJ-11 to DB-9 adapter cable (MDS P/N 03-3246A01) is required. If desired, this cable may be constructed using the information shown in Figure 1.

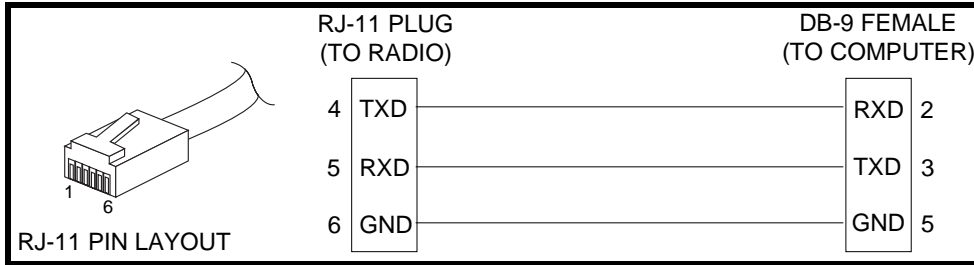


Figure 1. RJ-11 to DB-9 Adapter Cable (for PC Diagnostics & Control)

UNIT IDENTIFICATION

The MDS 9810's current software revision can be determined through the use of the MDS hand-held terminal (HHT) connected to the radio. Use the **SREV** command to ask the radio to display the currently installed software information. Or use the *REMOTE Radio Diagnostics* software and read the Software Rev. from the data screen as shown below.

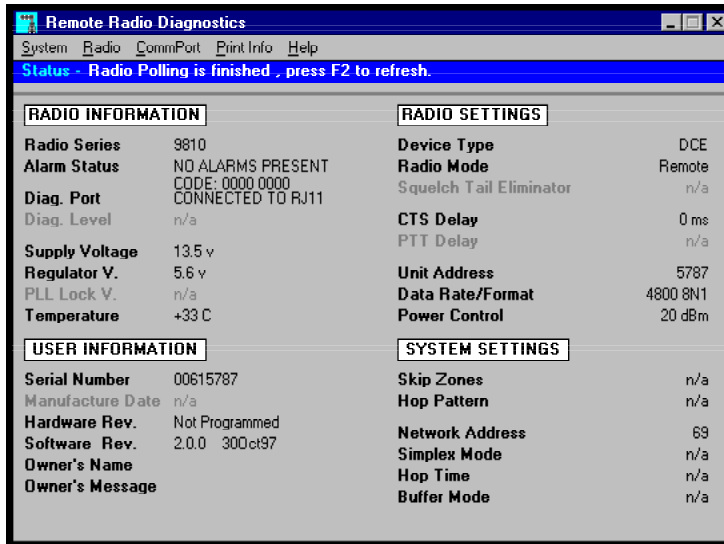


Figure 2. Data Screen from the *Radio Diagnostics* Software

SOFTWARE REVISION HISTORY (V 2.5) *File Name: 9810X250.S28*

1. This version may be required for reliable sleep mode operation.

(NOTE: V 2.3 and V 2.4 were never released.)

SOFTWARE REVISION HISTORY (V 2.2) *File Name: 9810X220.S28*

1. Added resources for future enhanced networking services not currently implemented.

SOFTWARE REVISION HISTORY (V 2.1) *File Name: 9810X210.S28*

1. Previous versions would not allow a user to re-program the UNIT number to a 4 digit value even though this is how they come from the factory. Both 4 and 5 digit numbers are now allowed.
2. Sleep mode (through the grounding of pin 12 of the user interface connector) was not reliable under some conditions prior to this release. Problems could range from no communications to intermittent loss of communications depending on the rate at which the radio was awakened.

