

# B86900-01

## Evolution Module

## Release Notes

Document version: 1.00  
Release Date: April 30<sup>th</sup>, 2020  
Type of Release: Production Release

### Lentronics Multiplexers

For SONET Multiplexers



Copyright © GE Multilin 2013, All Rights Reserved

The copyright of this document is the property of GE Multilin. This document must not be copied, reprinted or reproduced in any material form, either wholly or in part, without the written consent of GE Multilin.

GE Multilin reserves the right to make changes and modifications to any part of this document without notice.

GE Multilin is not responsible for any damages or losses incurred as a result of out-of-date or incorrect information contained in this document.



## TABLE OF CONTENTS

Table of Contents .....	2
Release Summary .....	3
Product/Component .....	3
Requirements .....	3
Documentation Control .....	3
Release Details .....	4
New Features .....	4
Engineering Rules .....	4
Limitations .....	4
Firmware Upgrade Procedure .....	4
Contacts .....	4



## RELEASE SUMMARY

### PRODUCT/COMPONENT

- B86900-01 Evolution Module
- Board Issue: 2
- Firmware Issue 1.03o
  - Flash Version 1.00e
  - FPGA Version 1.01
- Serial Number 05-00-0000
  
- Checksum 749AFD3D

### REQUIREMENTS

- VistaNET version 5.12.17128 is a required software component for unit setup and circuit provisioning. VistaNET can be downloaded from GE's website <http://www.gegridsolutions.com/communications/Multiplexers.asp>

### DOCUMENTATION CONTROL

Version 1.00	Production Release	April 30th, 2020
--------------	--------------------	------------------



## RELEASE DETAILS

### NEW FEATURES

GE's release of a new Evolution Module (B86900-01) is now available for JungleMUX SONET Multiplexers. This unit provides optical connectivity at 1.25Gb/s between JungleMUX nodes and GE's JunglePAX platform, to provide simple migration of traffic across mixed Hybrid JMUX & JPAX networks. The Evolution Module occupies a single shelf slot and is positioned within the JungleMUX Common or Expansion chassis, connecting to OC-3, OC-12 or OC-48 units via Configurable Bandwidth Ports. A single Optical SFP connect is used to establish connectivity to a JPAX 1G+ Hybrid Port. Redundant Evolution Modules may be connected at Single or Dual-Tied JMUX nodes to eliminate single points of weakness. This unit is now shipping with release 1.03 firmware supporting the following features

- 2\* CBW ports, each able to pass 28\* VT 1.5s over the fiber optic link
- 1 \* SFP cage supporting a standard 1.25Gb/s SFP
  - SFP is ordered separately based on desired optical budget
- 2 \* RJ-45 ports for future firmware update supporting 1G Ethernet over the same fiber
- VistaNET managed
- SSM forwarding from JMUX to JPAX is supported

Refer to page 2 of this document for an example of how to position Evolution Modules within the JungleMUX node and illustrating the optical connectivity to JunglePAX.

## ENGINEERING RULES

VistaNET version 5.12.17128 or newer is required to manage this unit.

## LIMITATIONS

This module currently supports VT1.5's only.

## FIRMWARE UPGRADE PROCEDURE

This is the first release of unit hardware and firmware.

### CONTACTS

For additional details or technical assistance, you may contact:

Customer Technical Service

Burnaby, BC

Canada,

Phone: 1-604-421-8610

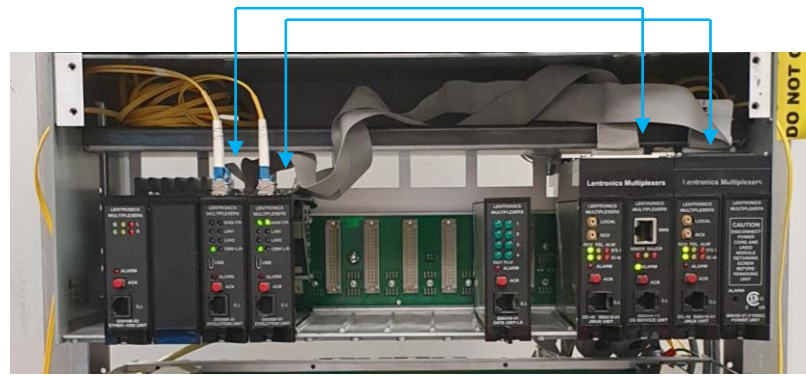
### JMUX ring to JPAX ring via Evolution Card



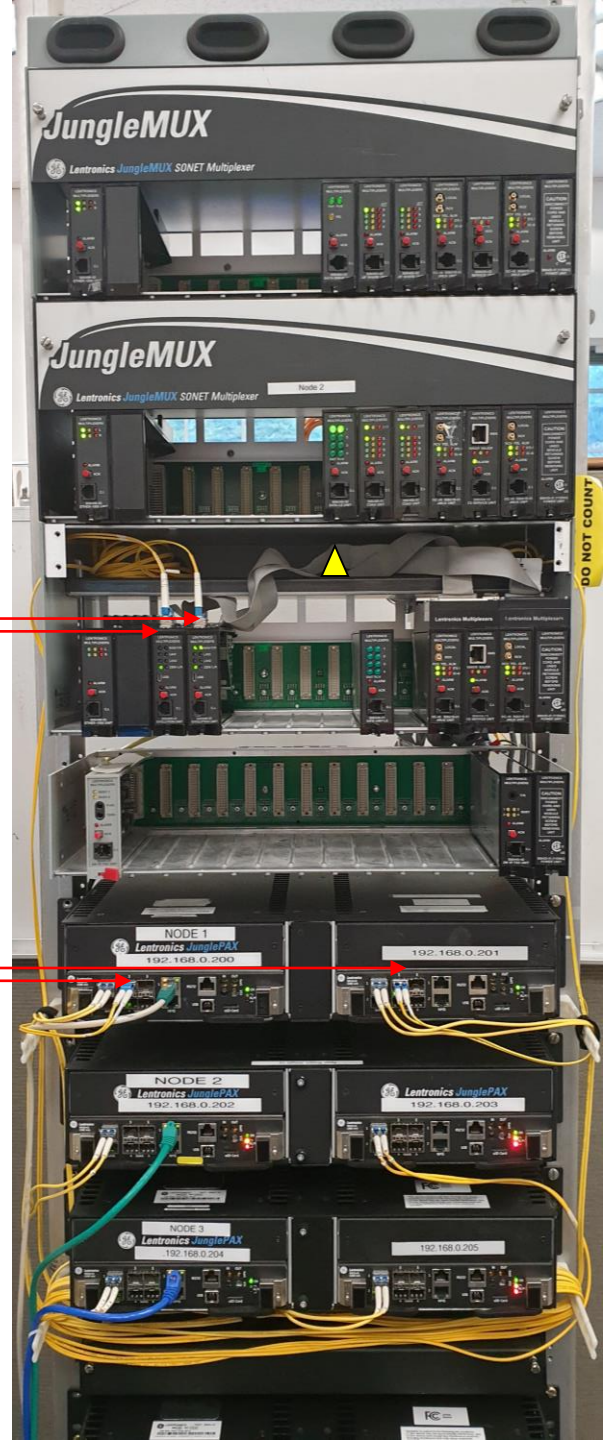
EVO unit front view

2x CBW ports  
WAN port

▲ EVO CBW ports to JMUX-1 OC-X CBW ports



EVO units WAN ports to JPAX WAN ports



JMUX-3  
Site C

JMUX-2  
Site B

JMUX-1  
Site A

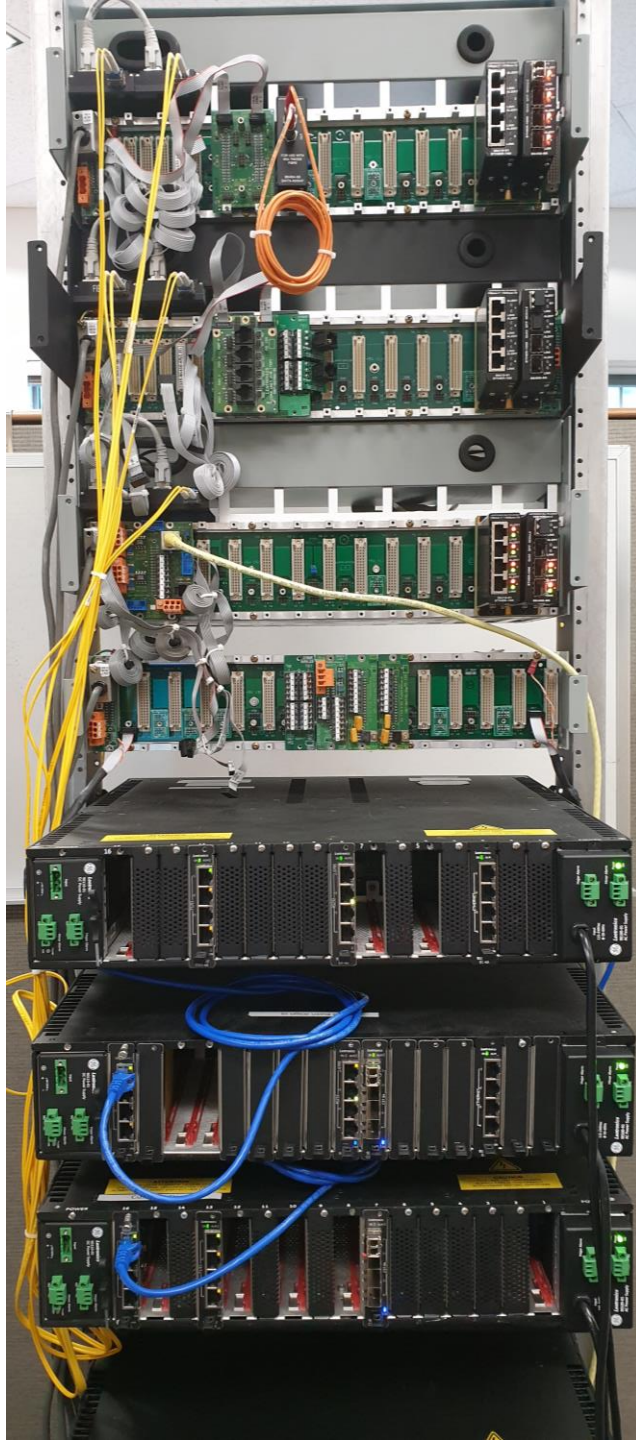
Expansion  
shelf

JPAX-1  
Site A

JPAX-2  
Site Y

JPAX-3  
Site Z

Collocated



JMUX-3

JMUX-2

JMUX-1

Expansion shelf

JPAX-1

JPAX-2

JPAX-3

Collocated

