

# LOAD COUPLING HARDWARE

Applicability: E- Fleet, F-Fleet



The load coupling is a rigid piece between the turbine and generator, critical to unit reliability and safety. During MI or other rotor-out scopes the couplings are disassembled and inspected. Damage and wear from maintenance activities can be an unwelcome surprise during outages. Sourcing parts to support an unplanned finding may put significant risk on outage critical-path schedule.

## Technical Information

The F-Fleet features a load coupling fastened with hydraulically tensioned hardware requiring special tools. This arrangement uses hydraulic force to stretch the studs to the correct length before applying the locknut to retain the fastener tension.

The E-Fleet shipped with two primary options for the load coupling: hydraulically tensioned and conventional arrangements. The conventional arrangement uses torque applied through a nut to achieve the proper stretch.

In addition, the E-Fleet features a flexible coupling assembly between the turbine and accessory section. A conventional fastener arrangement is typical on the accessory coupling assembly.

Coupling hardware is required to be moment-weighted to reduce impact to vibration. Hardware is often replaced as full sets or in balanced pairs to minimize potential impact to unit reliability.

## Risk

Discovery of hardware in unsatisfactory condition typically occurs emergently during an outage. Lack of satisfactory coupling hardware may impose significant impact to the outage critical path schedule. GE Vernova strives to keep

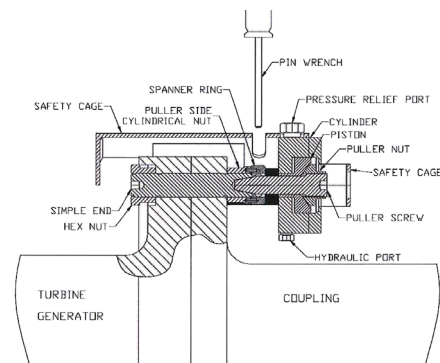
sufficient supply on-hand to support planned and emergent needs. However, supply can quickly become strained, driving lead time increase to several months.

## GE Vernova Recommendations

**TIL Guidance:** Please review TILs 1702 & 1807 for important safety-related recommendations.

**Outage Reports:** Review previous outage reports including scope associated with the couplings.

**Parts Planning:** Availability of coupling hardware is variable with unpredictable support for emergent findings. It is recommended to have balanced pairs and/or complete sets of hardware on-hand prior to your next MI or to support unplanned outages. Having access to or on-hand spare tooling is also recommended, especially for hydraulically tensioned arrangements.



Typical Arrangement of Hydraulically Tensioned Hardware and Tooling

TO LEARN MORE ABOUT THIS OFFERING,  
CONTACT YOUR SALES REPRESENTATIVE  
OR VISIT

[governova.com](https://governova.com)

Information contained in this document is indicative. No representation or warranty is given or should be relied on. Information provided is subject to change without notice.

© 2024 GE Vernova and/or its affiliates. All rights reserved.

GEA35474 (03/2024)



GE VERNOVA